



THALHIMER

OFFICE FOR LEASE
110 E. MAIN STREET
Salem, VA 24053



One Free Month for Every 36 Months of Lease

For more information, contact:

BOYD JOHNSON
Vice President
540 767 3002
boyd.johnson@thalhimer.com

310 1st Street, Suite 300
Roanoke, VA 24011
www.thalhimer.com

Independently Owned and Operated / A Member of the Cushman & Wakefield Alliance

Cushman & Wakefield | Thalhimer © 2015. No warranty or representation, express or implied, is made to the accuracy or completeness of the information contained herein, and same is submitted subject to errors, omissions, change of price, rental or other conditions, withdrawal without notice, and to any special listing conditions imposed by the property owner(s). As applicable, we make no representation as to the condition of the property (or properties) in question.



Property Features

- Two-story brick office building
- Situated in the heart of downtown Salem, VA
- Close to Roanoke College, Roanoke County and Salem General District Courts
- Mix of storefront retail, restaurant and office use in the immediate vicinity
- Parking included
- Handicapped accessible
- One free month for every 36 months of lease

Specifications	
Total Size	15,130 SF
Acreage	0.39+/- acre
Zoning	DBD City of Salem, VA
Parking	Approximately 40 spaces
Lease Rate	Negotiable

For more information, contact:

BOYD JOHNSON
Vice President
540 767 3002
boyd.johnson@thalhimer.com

310 1st Street, Suite 300
Roanoke, VA 24011
www.thalhimer.com



THALHIMER

OFFICE FOR LEASE
110 E. MAIN STREET
Salem, VA 24053



For more information, contact:

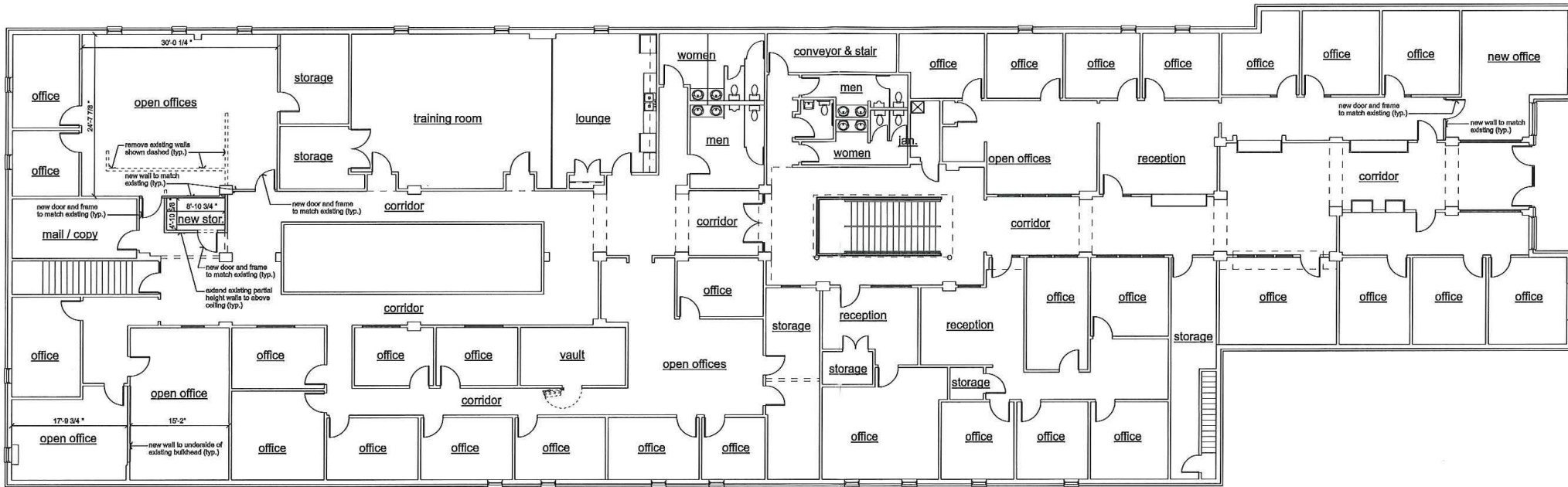
BOYD JOHNSON

Vice President
540 767 3002
boyd.johnson@thalhimer.com

310 1st Street, Suite 300
Roanoke, VA 24011
www.thalhimer.com

Independently Owned and Operated / A Member of the Cushman & Wakefield Alliance

Cushman & Wakefield | Thalhimer © 2015. No warranty or representation, express or implied, is made to the accuracy or completeness of the information contained herein, and same is submitted subject to errors, omissions, change of price, rental or other conditions, withdrawal without notice, and to any special listing conditions imposed by the property owner(s). As applicable, we make no representation as to the condition of the property (or properties) in question.



1 main floor plan
g1.1 scale: 1/8" = 1'-0"

For more information, contact:

BOYD JOHNSON
Vice President
540 767 3002
boyd.johnson@thalhimer.com

310 1st Street, Suite 300
Roanoke, VA 24011
www.thalhimer.com