

For Lease

Silver Lake Plaza
841 Silver Lake Blvd
Dover, DE 19904

Charles
Rodriguez

302-674-3400

ccrod1@aol.com



46 South State Street
Dover, Delaware 19901

302-674-3400

www.randrcommercialrealty.com



Property Information

Silver Lake Plaza is located on Silver Lake Blvd, just off Walker Road in Dover, Delaware. The complex is a few minutes' drive to Downtown Dover, courthouses, banks, and the hospital. The complex consists of multiple two-story office buildings. Silver Lake Plaza has a mix of professional, medical and government offices. The property is served by public transportation.

All information contained herein is believed to be accurate, however was obtained from third parties and R & R Commercial Realty, Inc. does not warrant as to the accuracy submitted, subject to changes or modification without notice. Listing Broker represents the sellers interest.

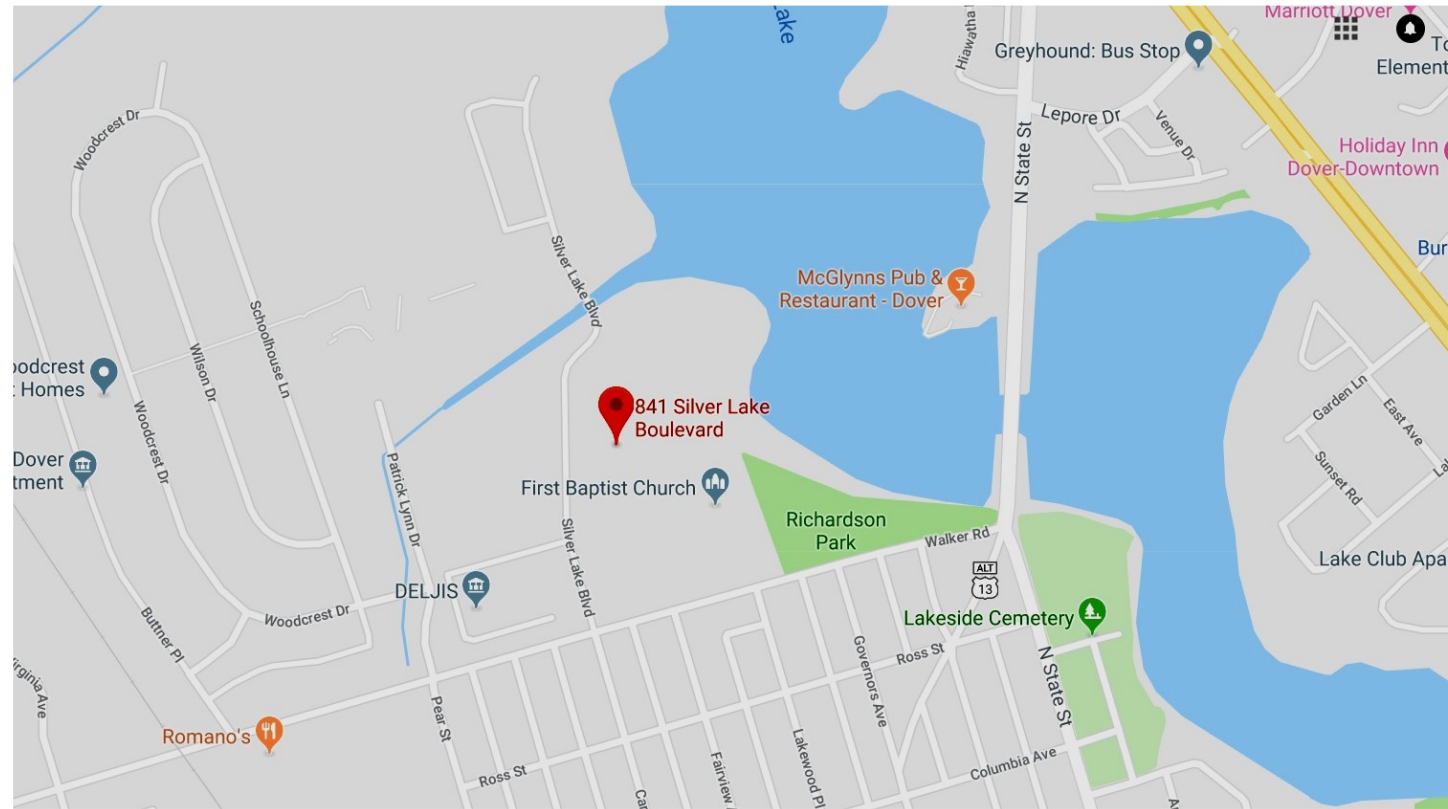
Office Building for Lease

841 Silver Lake Blvd, Dover, DE 19904



Property Information

- ⇒ Green Technology - Solar Panels & LED Lighting throughout
- ⇒ 29,680+/- SF Office Building
- ⇒ Two Story Class A Professional Office 14,840+/- SF per floor
- ⇒ Close to Downtown Dover, State and County offices, Hospital, and Banks, with multiple dining and shopping options nearby
- ⇒ Ample parking and Signage throughout park
- ⇒ Easy access to Route 13 and available DART Bus Route
- ⇒ Lease Price: \$16.00 psf NNN (NNN charges approx. \$4.75 psf)

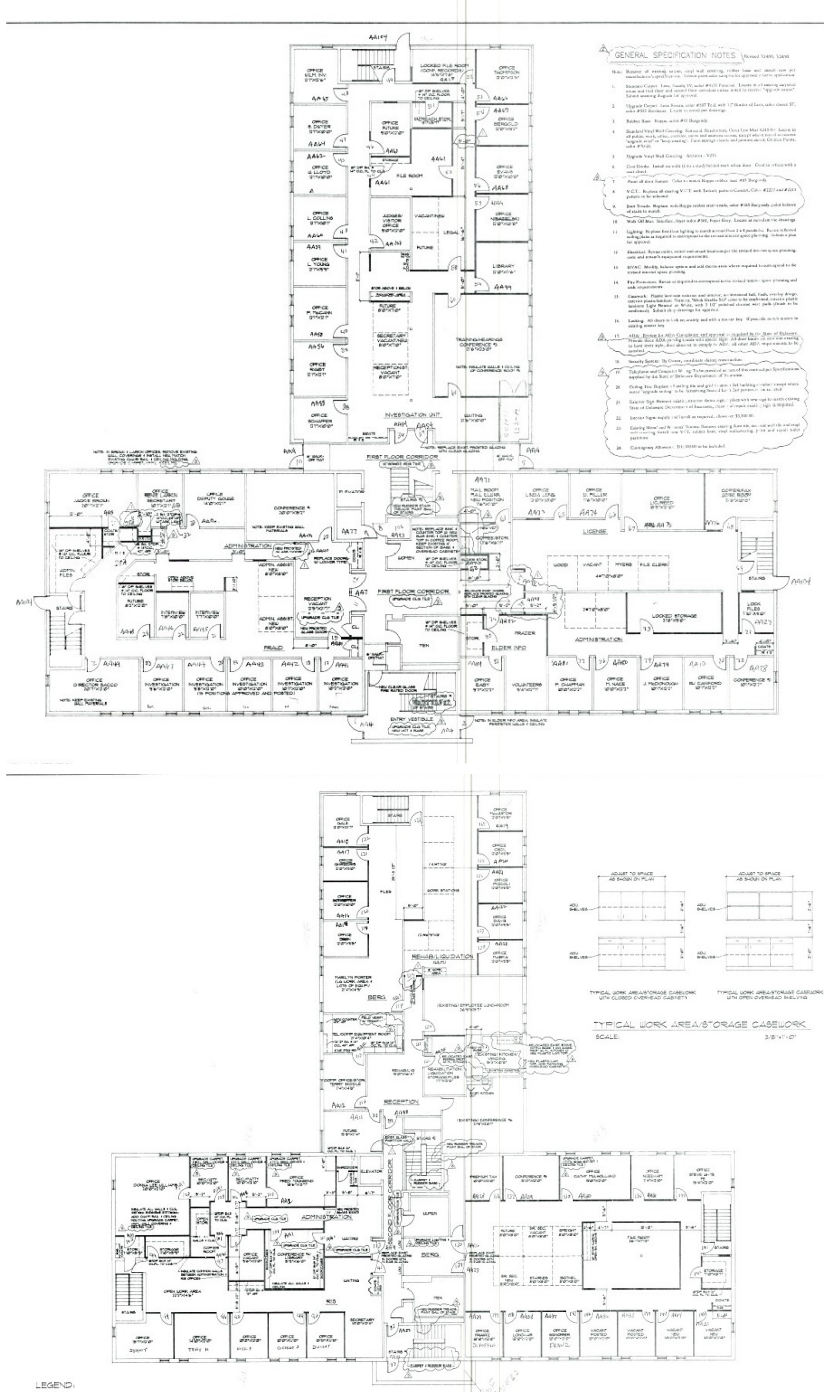
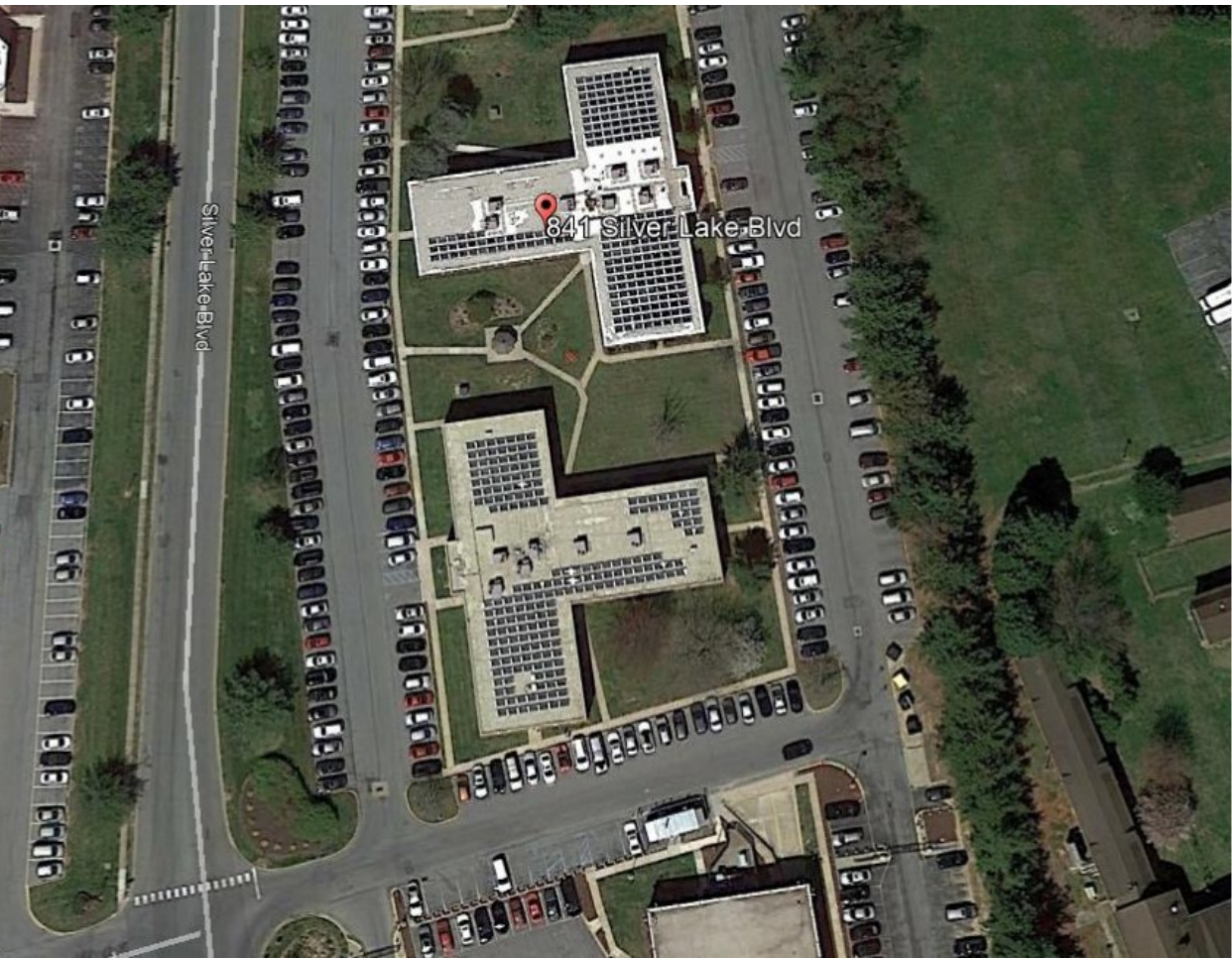


R&R Commercial Realty ◆ 46 South State Street, Dover, DE 19901 ◆ 302-674-3400 ◆ www.randrcommercialrealty.com



Office Building for Lease

841 Silver Lake Blvd, Dover, DE 19904



R&R Commercial Realty ♦ 46 South State Street, Dover, DE 19901 ♦ 302-674-3400 ♦ www.randrcommercialrealty.com

All information contained herein is believed to be accurate, however was obtained from third parties and R & R Commercial Realty, Inc. does not warrant as to the accuracy submitted, subject to changes or modification without notice. Listing Broker represents the sellers interest.

Office Building for Lease

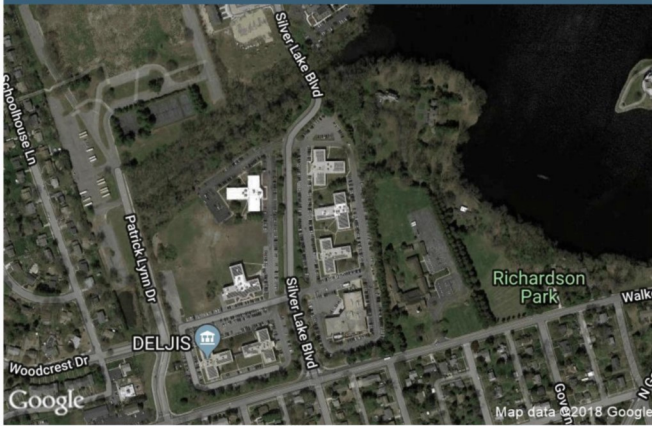
841 Silver Lake Blvd, Dover, DE 19904



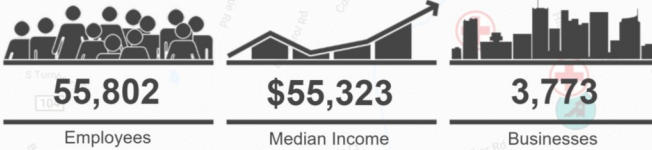
Silver Lake Plaza

841 Silver Lake Blvd, Dover, DE 19901

Aerial View



5 Mile Information

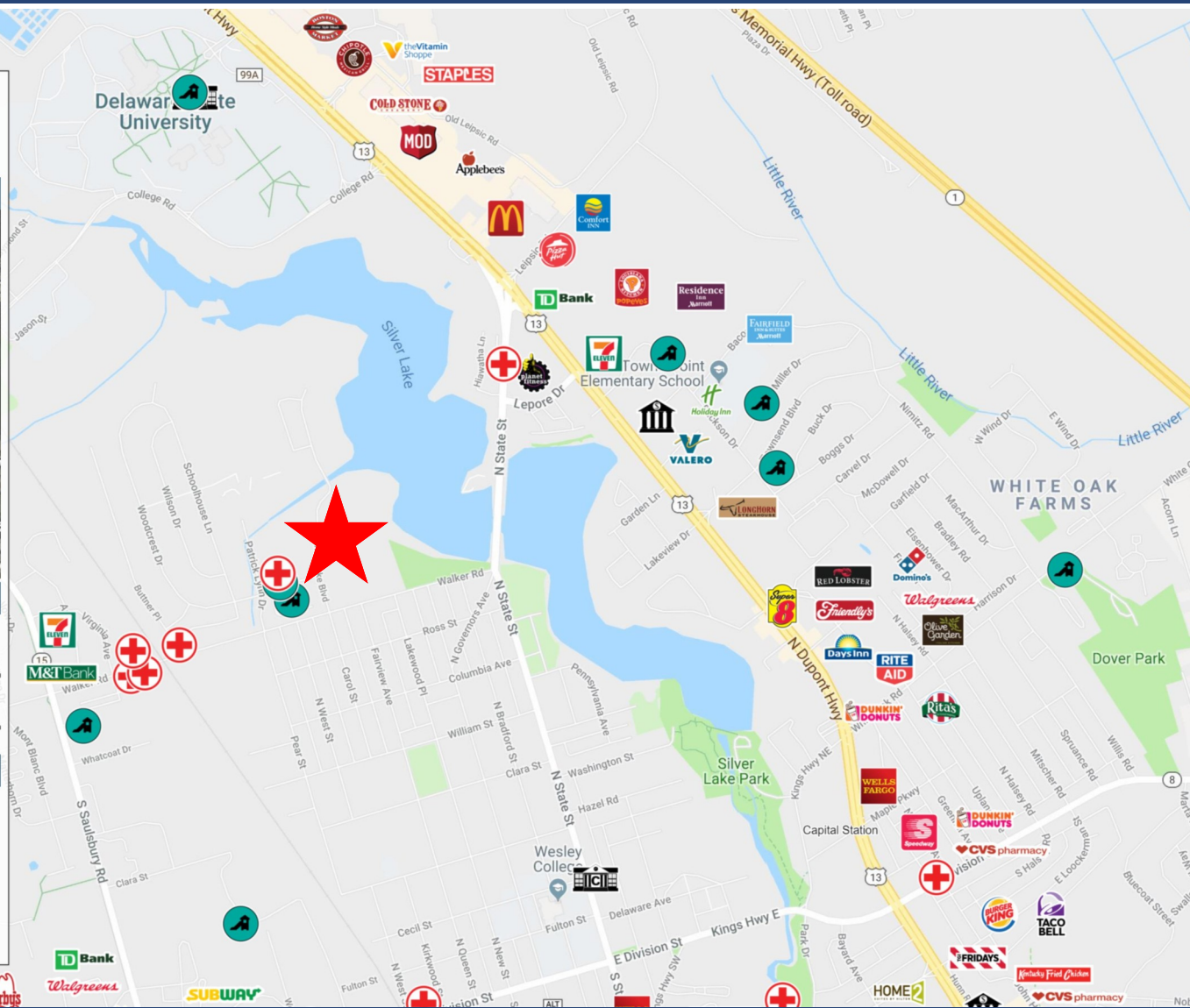


Contact Information



Name: Charles Rodriguez
Email: ccr0d1@aol.com
Phone: 302.674.3400

©2017, SITES USA Inc. All Rights Reserved. | (480) 491-1112 | 4005 W Chandler Blvd, Chandler AZ 85226
Logos are for identification purposes only and may be trademarks of their respective companies. This map was produced using data from private and government sources deemed to be reliable. The information herein is provided without representation or warranty.



R&R Commercial Realty ♦ 46 South State Street, Dover, DE 19901 ♦ 302-674-3400 ♦ www.randcommercialrealty.com