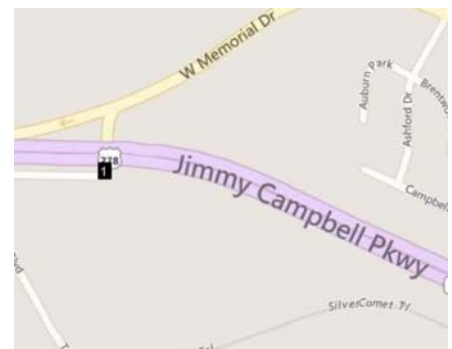




Property Highlights:

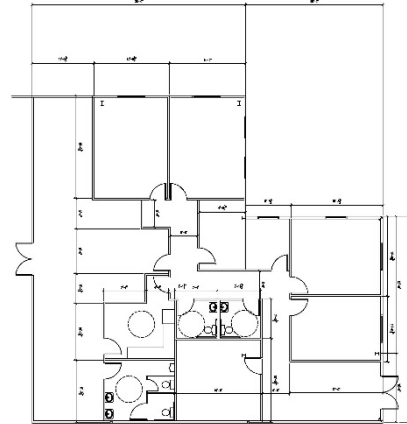
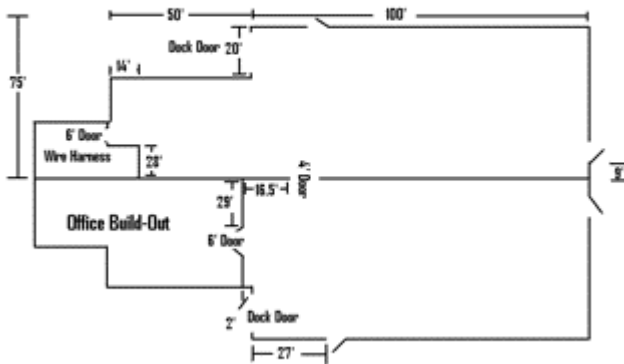
- Priced at \$949,000
- 22,500 sf
- 2.35 Acres
- Located on Hwy 368/Jimmy Smith Parkway
- Terrific Visibility on Hwy 368
- 4.5 Miles from Charles Hardy Parkway/Dallas Hwy
- Built in 2006
- 18' Ceiling Height
- Office/Conference Room/Receptionist area /Kitchen Area
- Showroom
- 4 Restrooms
- HVAC in Warehouse
- 2 Dock Doors
- Parcel #014412
- 200A/208V



Carla Bass
404 317 7801

carla.bass@cbco.com

CBCO 2017. No warranty or representation, express or implied, is made to the accuracy or completeness of the information contained herein, and same is submitted subject to errors, omissions, change of price, rental or other conditions, withdrawal without notice, and to any special listing conditions imposed by the property owner(s). As applicable, we make no representation as to the condition of the property (or properties) in question.



Interior View of The Front Office Area.



Interior View of a Typical Office.



Interior View of a Typical Hallway Within The Office Area.



Interior View of the Conference Room Area.



Interior View of the Kitchen/Breakroom Area.



Interior View of the Production Area.



Interior View of the Central Demising Wall Within The Warehouse Area.



Interior View of The Warehouse Area.



Interior View of The Warehouse Area.

Carla Bass
 404 317 7801

carla.bass@cbco.com

CBCO 2017. No warranty or representation, express or implied, is made to the accuracy or completeness of the information contained herein, and same is submitted subject to errors, omissions, change of price, rental or other conditions, withdrawal without notice, and to any special listing conditions imposed by the property owner(s). As applicable, we make no representation as to the condition of the property (or properties) in question.