

±10 ACRE RESIDENTIAL SITE

NWC 140TH STREET & LONE MOUNTAIN ROAD | MARICOPA COUNTY, ARIZONA

LOCATION Property is located at the northwest corner of 140th Street & Lone Mountain Road in Maricopa County, AZ

PRICE \$800,000

SIZE ±9.96 acres

PARCEL 219-40-051D

UTILITIES

Electric: APS

Water: Will require a private well

Sewer: Septic

SCHOOLS

High School District: Cave Creek Unified #93

Elementary School District: Cave Creek Unified School District

ZONING RU-43

TAXES \$1,350.06 (2017)

COMMENTS

- Property is located in highly sought-after Rio Verde/North Scottsdale submarket north of 136th St and Rio Verde Dr and is ideal for spec home construction or a private ranch
- The Tonto National forest is located just over 3 miles north of the property and the McDowell Mountain preserve is located just under 4 miles south of the property. Combined these preserves encompass 2,894,059 acres of open space that allow for biking, horseback riding, hiking, hunting, off-roading and much more.
- Extensive development activity is occurring west and east of the property at Scottsdale National and Shea's Trilogy.

Lone Mountain Rd

144th St

Subject

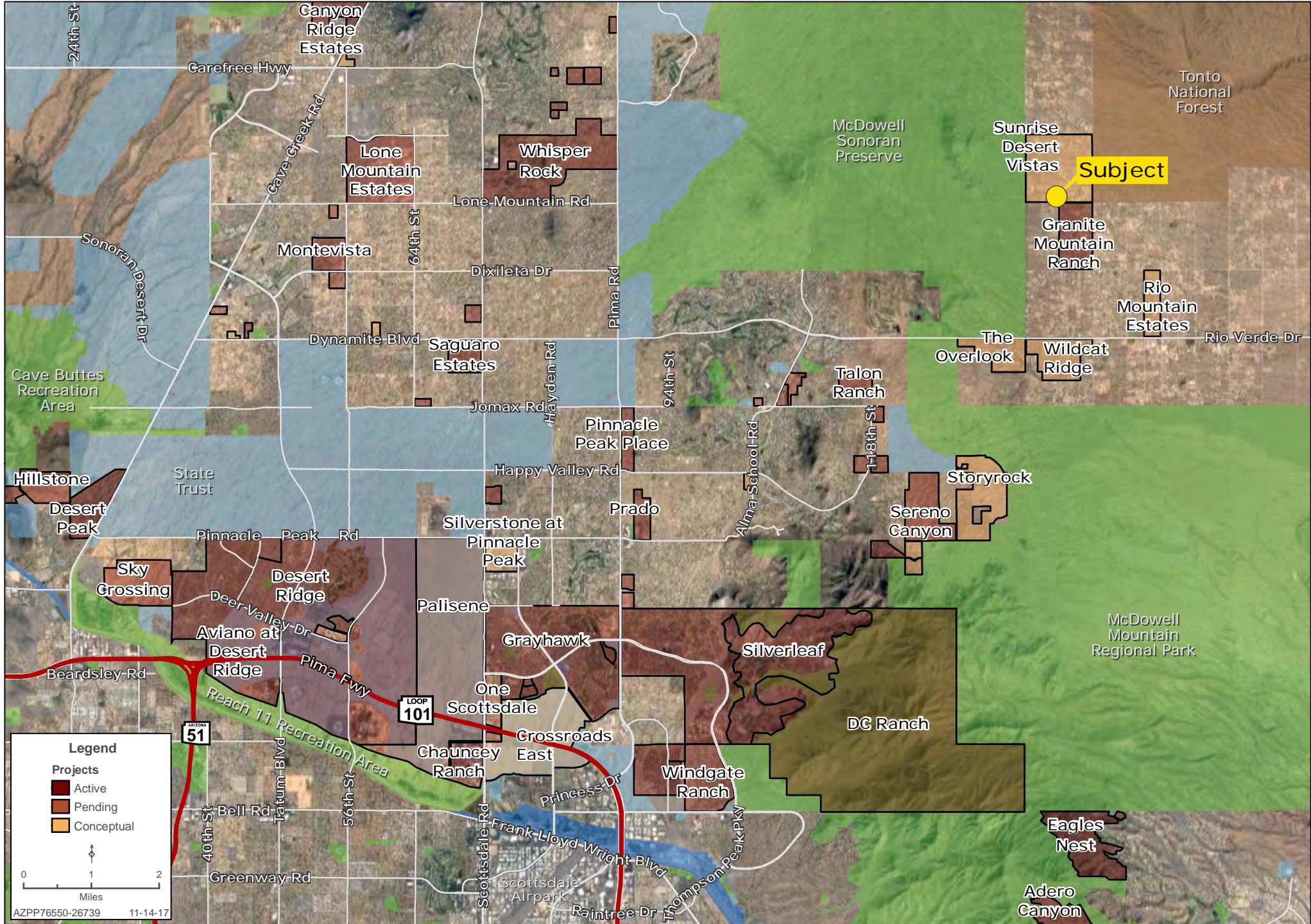
Wes Campbell | wcampbell@landadvisors.com **Waseem Hamadeh** | whamadeh@landadvisors.com
4900 North Scottsdale Road, Suite 3000, Scottsdale, Arizona 85251 ph. 480.483.8100 | www.landadvisors.com

The information contained herein is from sources deemed reliable. We have no reason to doubt its accuracy but do not guarantee it. It is the responsibility of the person reviewing this information to independently verify it. This package is subject to change, prior sale or complete withdrawal. AZPP76550-11.21.17

 Land Advisors®
ORGANIZATION

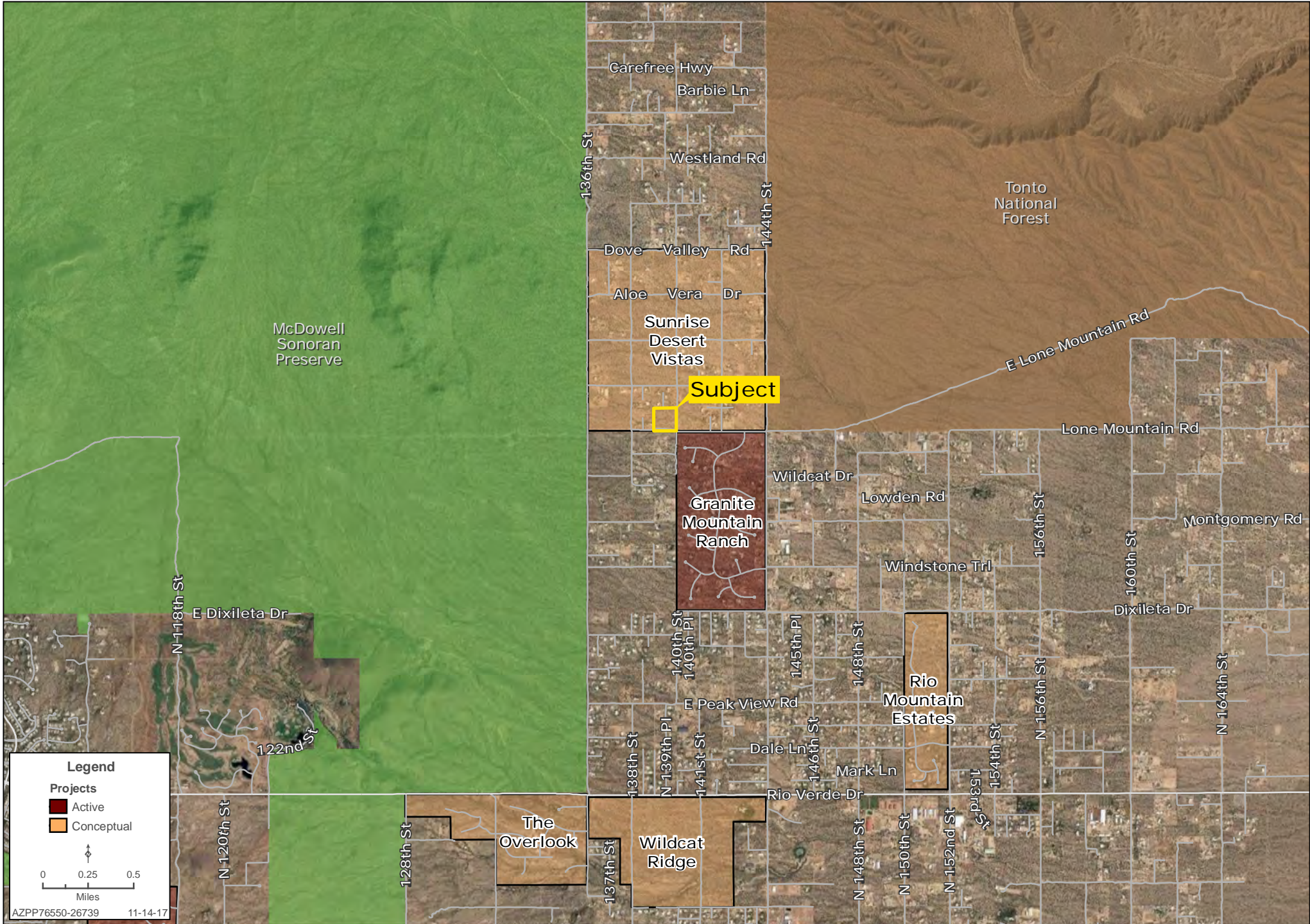
NWC 140TH ST AND E LONE MOUNTAIN SURROUNDING DEVELOPMENT MAP

Wes Campbell | Waseem Hamadeh | 480.483.8100 | www.landadvisors.com



NWC 140TH ST AND E LONE MOUNTAIN SURROUNDING AREA MAP


Wes Campbell | Waseem Hamadeh | 480.483.8100 | www.landadvisors.com



NWC 140TH ST AND E LONE MOUNTAIN OBLIQUE MAP

Wes Campbell | Waseem Hamadeh | 480.483.8100 | www.landadvisors.com




AZPP76550-26739 11-14-17

NWC 140TH ST AND E LONE MOUNTAIN PROPERTY DETAIL MAP

Wes Campbell | Waseem Hamadeh | 480.483.8100 | www.landadvisors.com

