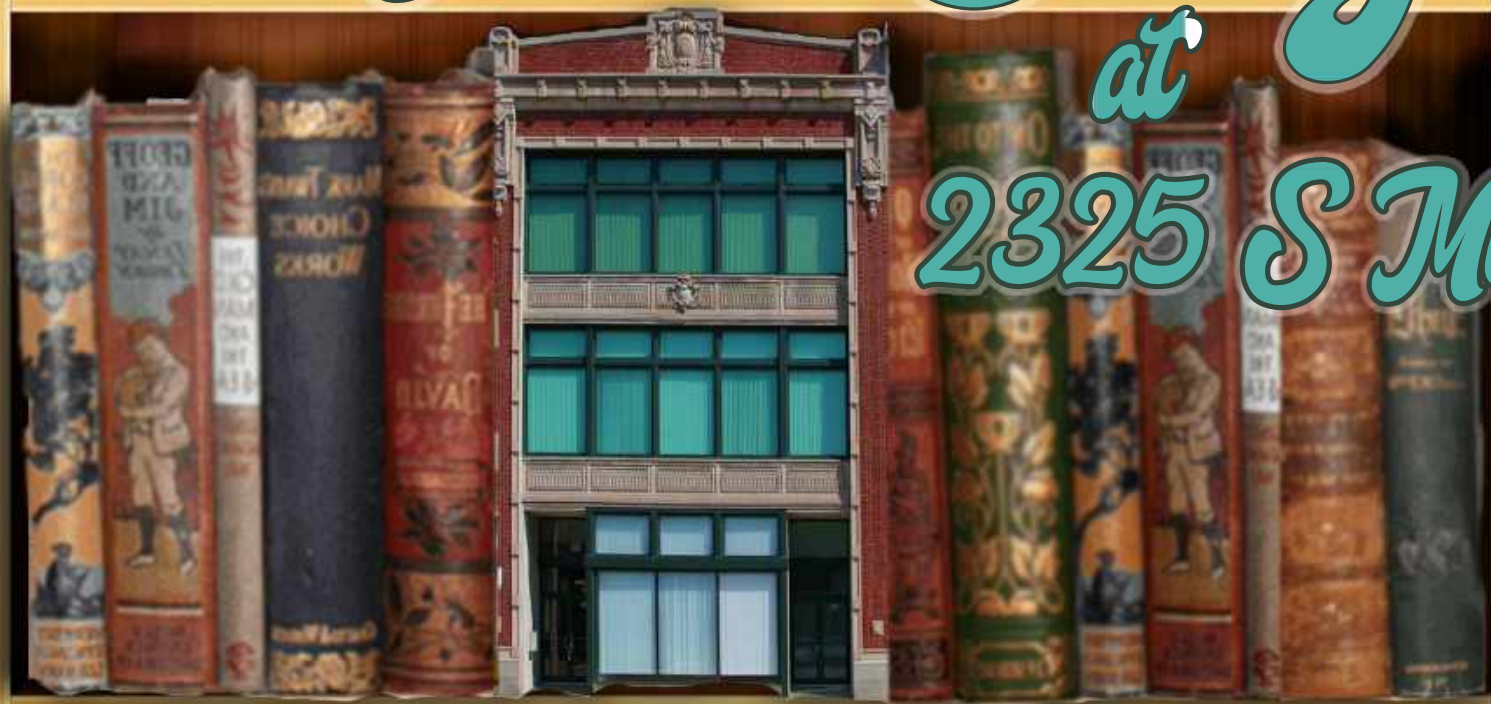


Write Your Story

at
2325 S Michigan



xnCommercial

With full-building and individual floor availability, 2325 S Michigan provides a truly unique opportunity

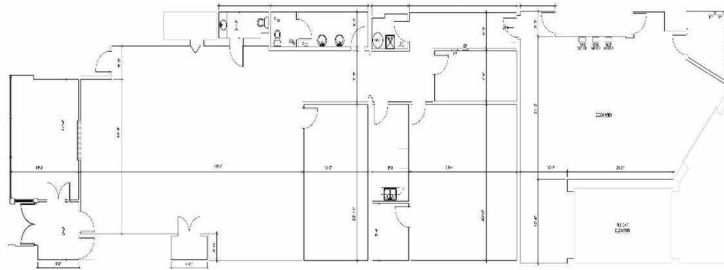
to carve out your own bespoke space in the historical Motor Row.

Pick Your Path.



1st floor - 5,532 SF

Michigan Ave

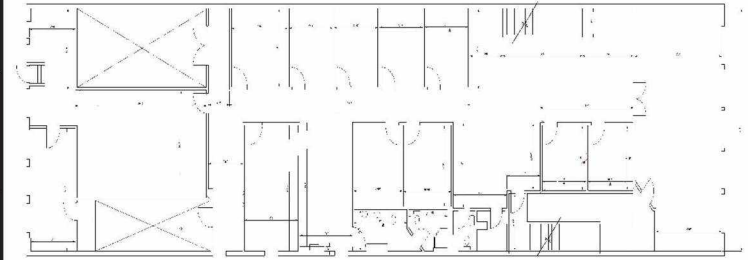


incommercialre.com

Floor 1: 5,532 SF



2nd Floor - 5,296 SF



Michigan Ave

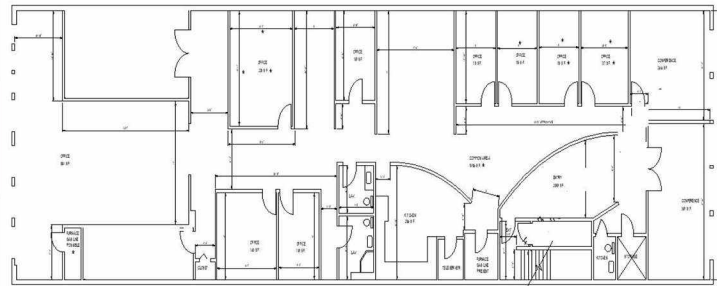
Up to 18,285 SF

incommercialre.com

All dimensions indicated on this plan are approximate and should be field verified.



3rd Floor - 5,296 SF



Michigan Ave

Floor 3: 5,296 SF

Floor 2: 5,296 SF



1st Floor

Mostly open space | 2 conference rooms | Reception area | Separate street entrance



2nd Floor

11 offices | 1 conference room



3rd Floor

10 offices



Full Building

Extensive floor-to-ceiling window line
Original 1925 brick facade
Client-friendly layouts
Multiple private bathrooms
Exterior signage available

Public Transportation

Commuter Rail

Halsted Station Commuter Rail (Burlington Northern-Santa Fe Railway Line) - 1.8 mi

Chicago LaSalle Station Commuter Rail (Rock Island District Line) - 2.2 mi

Transit/Subway

Cermak-Chinatown Station (Red Line) - 0.6 mi

McCormick Place Station (South Shore Line) - 0.7 mi

McCormick Place Station (Metra Electric Line) - 0.7 mi

27th Street Station (Metra Electric Line) - 0.9 mi

18th Street Station (Metra Electric Line) - 0.9 mi

Airport

Chicago Midway International Airport - 8.6 mi

Chicago O'Hare International Airport - 20.2 mi

Make Your Mark at Motor Row



Demographics

2020 Population (2m) - 140,013

2025 Pop. Projection - 142,550

Median Age - 35.9

Avg. Household Income - \$96,036

Your Story Starts Here

at 2325 S Michigan



Jonathan Zimmerman

jzimmerman@incommercialre.com

312-263-8787

incommercialre.com