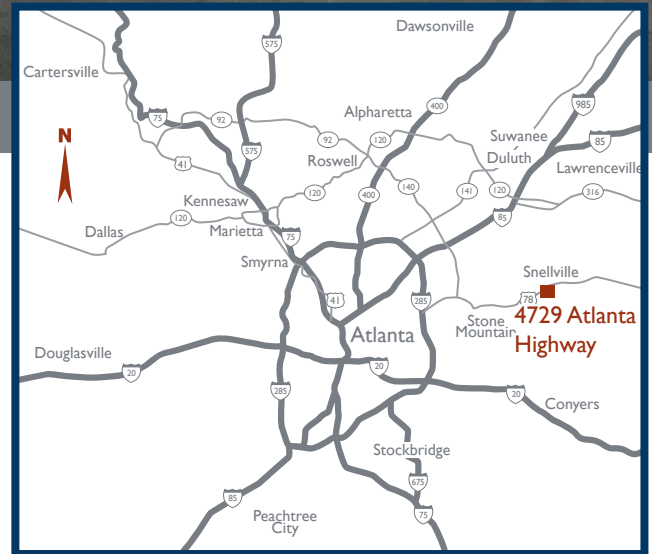


4729 ATLANTA HIGHWAY (US HWY 78)

LOGANVILLE, GA 30052



PROPERTY DETAILS

- Attractive brick and stucco 4,000 SF retail center in Walton County anchored by AT&T and adjacent to Kroger center
- Excellent visibility on the primary artery in this market area; Atlanta Hwy (US Hwy 78) has 45,400 VPD at this Kroger center
- Easy access with signalized entrance
- Good demographics with 63,000 residents and 16,000 daytime population within a 5 mile radius; and average household income of \$79,720
- 1,500 SF available with Drive Thru
- 1.05 acre Outparcel available, adjacent

BRAND
Real Estate Services

BrandProperties.com
770.476.4801

4729 ATLANTA HIGHWAY (US HWY 78)

LOGANVILLE, GA 30052



TRAFFIC COUNTS

Atlanta Hwy (US Hwy 78
at the Kroger center) 45,400 VPD

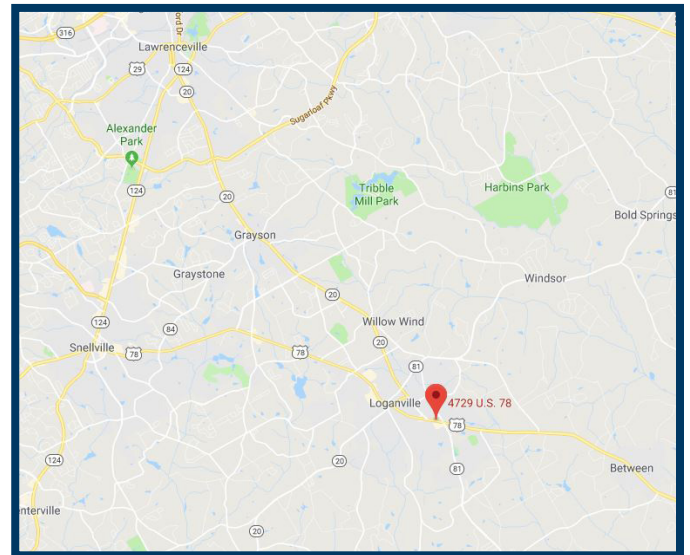
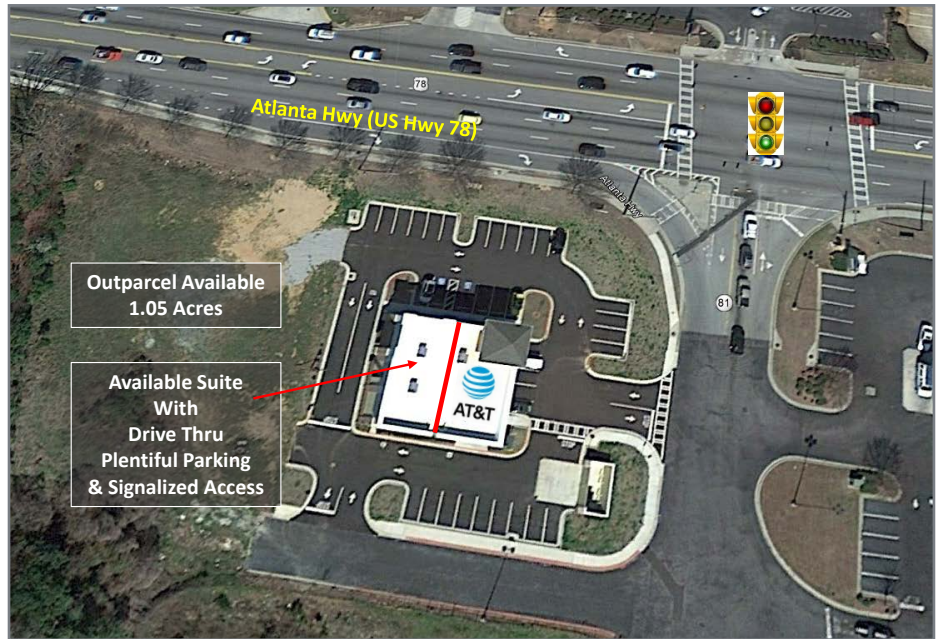
DEMOGRAPHICS - 2018 CoStar

| | 1 mile | 3 miles | 5 miles |
|--------------|----------|----------|----------|
| Population | 5,030 | 25,209 | 63,003 |
| Daytime Pop. | 3,189 | 10,104 | 16,000 |
| Income | \$67,935 | \$74,139 | \$79,720 |

GPS COORDINATES

Lat. 33.8300047 Long. -83.8926486

| SUITE | TENANT | SF |
|-------------------|-----------|-------|
| 100 | AT&T | 2,500 |
| 200 | Available | 1,500 |
| Total Square Feet | | 4,000 |



Rebecca Waters, CLS, CSM, CPM
Executive Vice President, Leasing

rwaters@BrandProperties.com

770.497.6464 Direct | 404.274.6777 Mobile