

# 4.85 ACRES

## MENIFEE - EDC ZONING

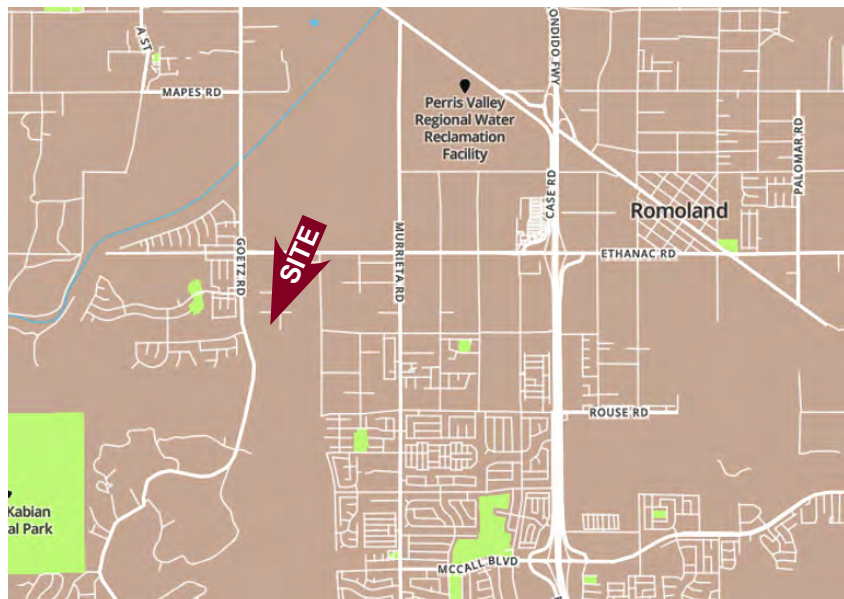


SW CORNER OF WHEAT ST. & CORSICA LN.

### Property Highlights:

- APN# 330-180-010
- Located in City of Menifee's North Gateway Corridor
- EDC Zoning: encourages light industrial, business park, office, commercial
- Over 6,000 homes proposed within 1 mile of site
- Sewer and Water lines available in McLaughlin Rd.
- Flat Parcel

# \$525,000



**CHARLEY BLACK**

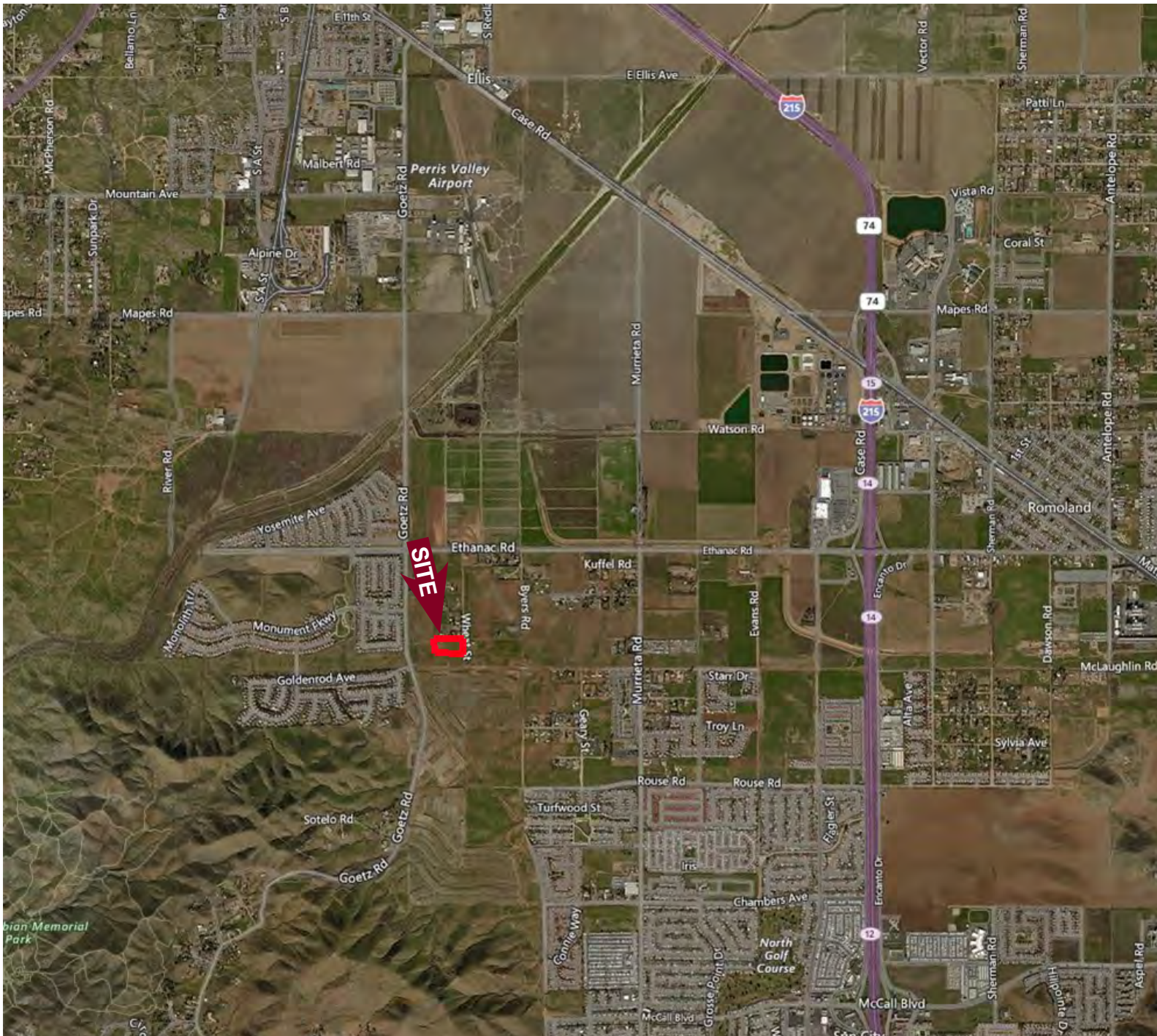
**951.445.4507**

[cblack@lee-associates.com](mailto:cblack@lee-associates.com)

LICENSE #01000597

# 4.85 ACRES

## MENIFEE - EDC ZONING



**CHARLEY BLACK**

**951.445.4507**

[cblack@lee-associates.com](mailto:cblack@lee-associates.com)

LICENSE #01000597



25240 Hancock Avenue, Suite 100 | Murrieta, CA 92562 | [www.lee-associates.com](http://www.lee-associates.com) | Corp ID # 01048055

We obtained the information above from sources we believe to be reliable. However, we have not verified its accuracy and make no guarantee, warranty or representation about it. It is submitted to the possibility of errors, omissions, change of price, rental or other conditions, prior sale, lease or financing, or withdrawal without notice.