

*The Jewel @*

**620 KIRKLAND WAY**



**KIRKLAND OFFICE SPACE AVAILABLE FOR LEASE**

# The Jewel @ 620 KIRKLAND WAY



## BUILDING FEATURES

- Major remodel recently completed for the exterior and interior of the building
- Two story office building conveniently located in Downtown Kirkland
- Parking ratio of 3.3 stalls / 1,000 SF - covered and surface parking
- Direct access to I-405 via Kirkland Way, SR-520 and Eastside neighborhoods
- Less than a block away from Kirkland Urban, with over 250,000 SF of retail options
- Three blocks from Kirkland Transit Center
- Easy walk to all of Downtown Kirkland's retail and restaurant amenities

## AVAILABLE SPACE

SUITE 105 - 1,128 SF

AVAILABLE NOW

CALL BROKERS FOR RATES



# The Jewel @ 620 KIRKLAND WAY

**RARE DOWNTOWN  
AVAILABILITY**



**KIRKLAND**  
**URBAN.**

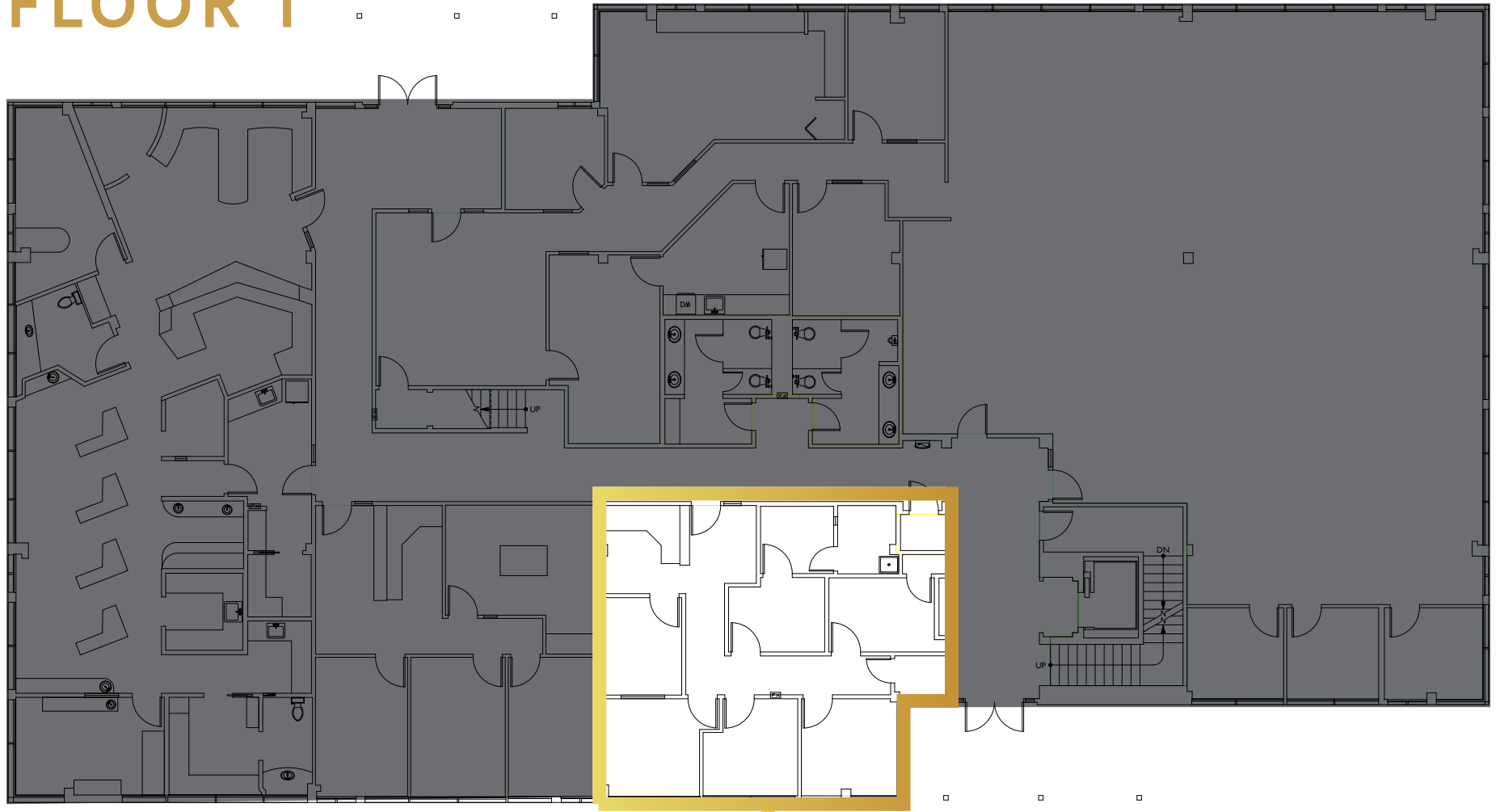
- Chainline Brewing
- Shake Shack
- QFC w/ Starbucks
- Tutta Bella
- Mud Bay
- AT&T Wireless
- Home Street Bank
- Bright Horizons
- Top Golf Lounge
- Soi - Thai Restaurant
- Rachels Ginger Beer
- Evergreens
- Dough Zone
- Cafe Ladro
- IPic Theatre



*The Jewel @*  
**620 KIRKLAND WAY**

**FLOOR PLAN**

**FLOOR 1**



**SUITE  
105**