



388 BLEECKER STREET

Between West 11th Street & Perry Street

388 BLEECKER STREET

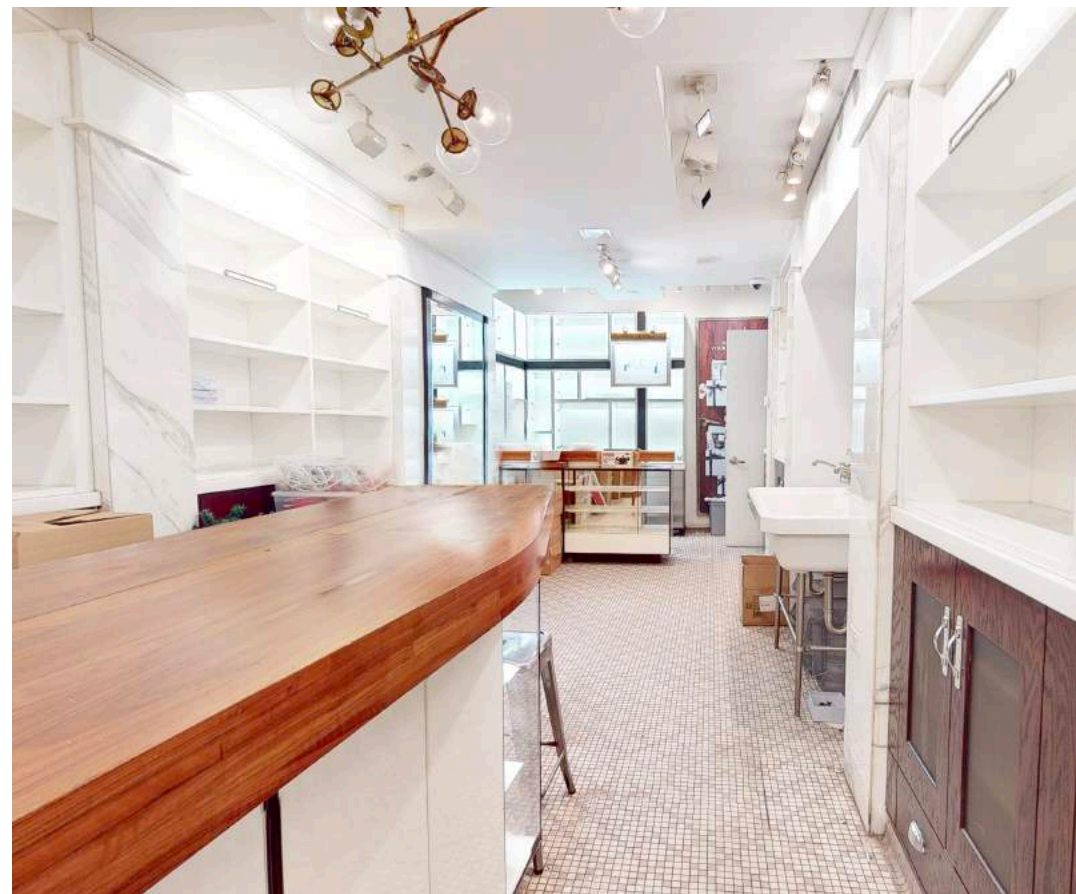
SPACE SPECIFICATIONS

- **GROUD FLOOR:**
Approx. 750 SF
- **LOWER LEVEL:**
Approx. 750 SF (Non-Contiguous Storage)
- **POSSESSION:**
Arranged
- **TERM:**
Flexible
- **ASKING RENT:**
Upon Request



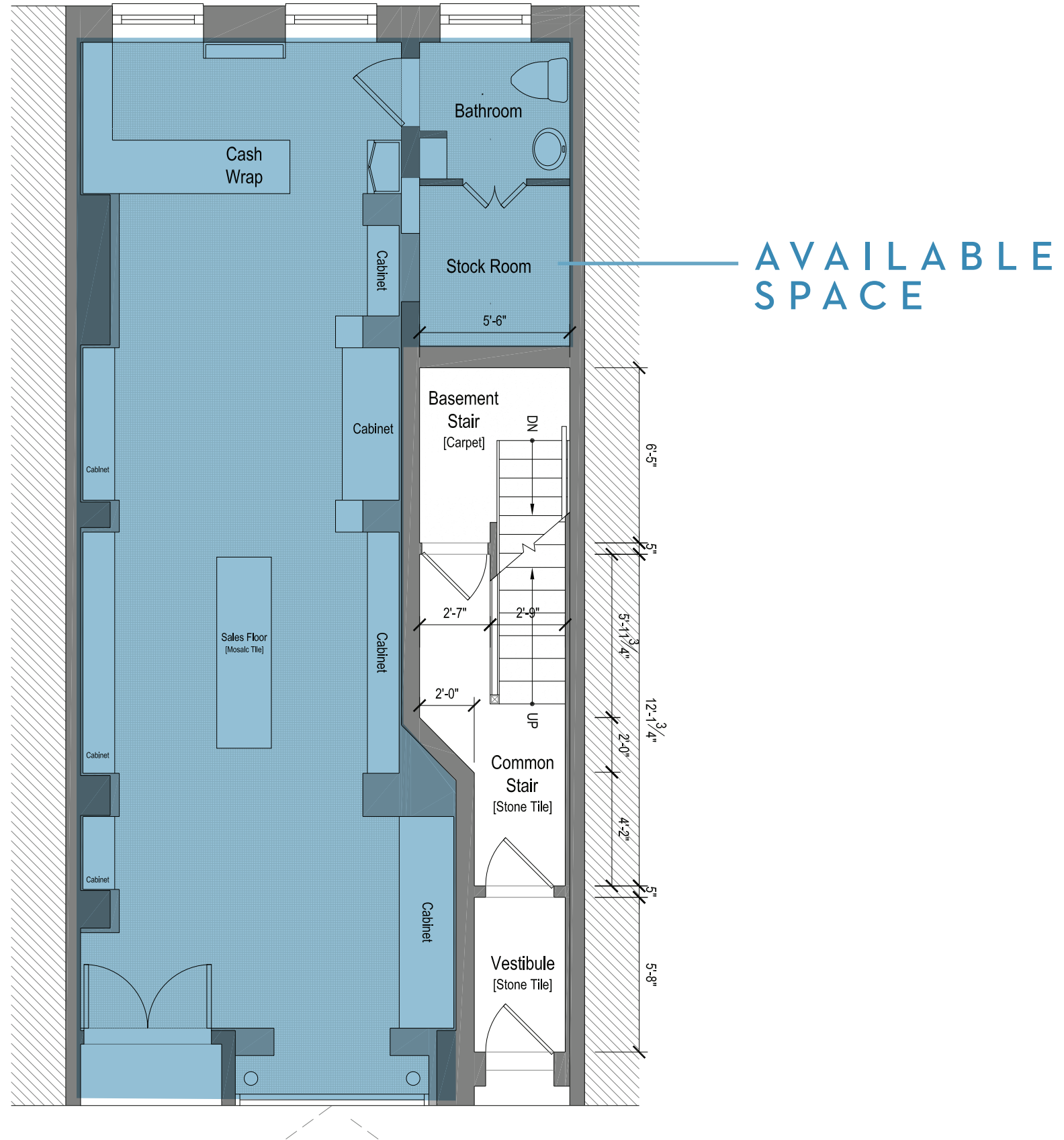
COMMENTS

- Formerly occupied by Fresh
- Fully built out boutique
- Located on the best retail stretch in the West Village
- Pop-Up's accepted
- All non-cooking uses considered
- Neighboring tenants include: Robert Marc, LoveShackFancy, Diptyque, Cynthia Rowley, Goodlife Clothing, Christofle, Bookmarc, Something Navy, Huckbery, etc.



FLOOR PLAN

GROUND FLOOR:



388 BLEECKER STREET

Between West IIth Street & Perry Street

Hiro Otsubo
Real Estate Salesperson
917.327.0337
hiro@otsuborealty.com

No representation is made as to the accuracy of the information furnished herein and same is submitted subject to errors, omissions, change of prices, rental, or other conditions, prior sale, lease, sublease, and/or withdrawal without notice. The furnishing of this information shall not be deemed a hiring. A commission in accordance with our principal's schedule of rates and conditions will be paid to the procuring Broker who executes our or our principal's brokerage agreement, subject to a fully consummated transaction upon terms and conditions acceptable to our principal.