

**OFFICE FOR LEASE**  
**PROFESSIONAL OFFICE BUILDING**  
4545 GEORGETOWN PLACE, STOCKTON, CA



## LISTING DATA

### AVAILABLE SF:

Multiple suites available:

SUITE A-2:	1,000± SF
SUITE E-26:	1,250± SF

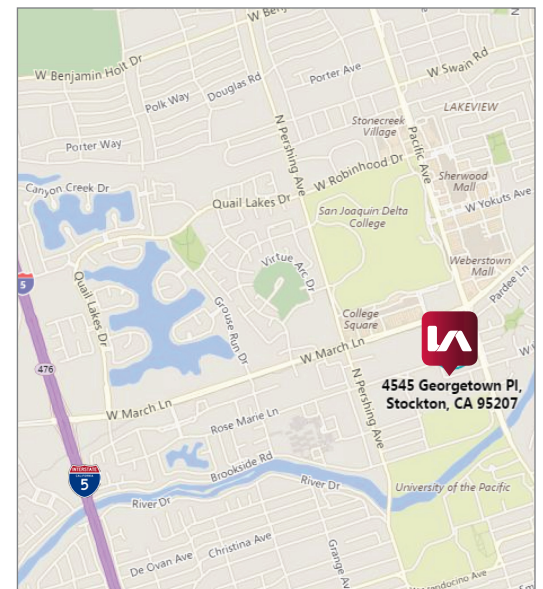
### COMMENTS:

- Attractive, single-level, garden-style office complex
- Adding security features
- Professional complex w/easy access to/from March Lane
- Close proximity to a numerous restaurants, professional offices, and other services

## ECONOMIC DATA

**LEASE RATE:** \$1.00 PSF (Modified Gross)

**\*UTILITIES ARE REIMBURSED BY TENANT**



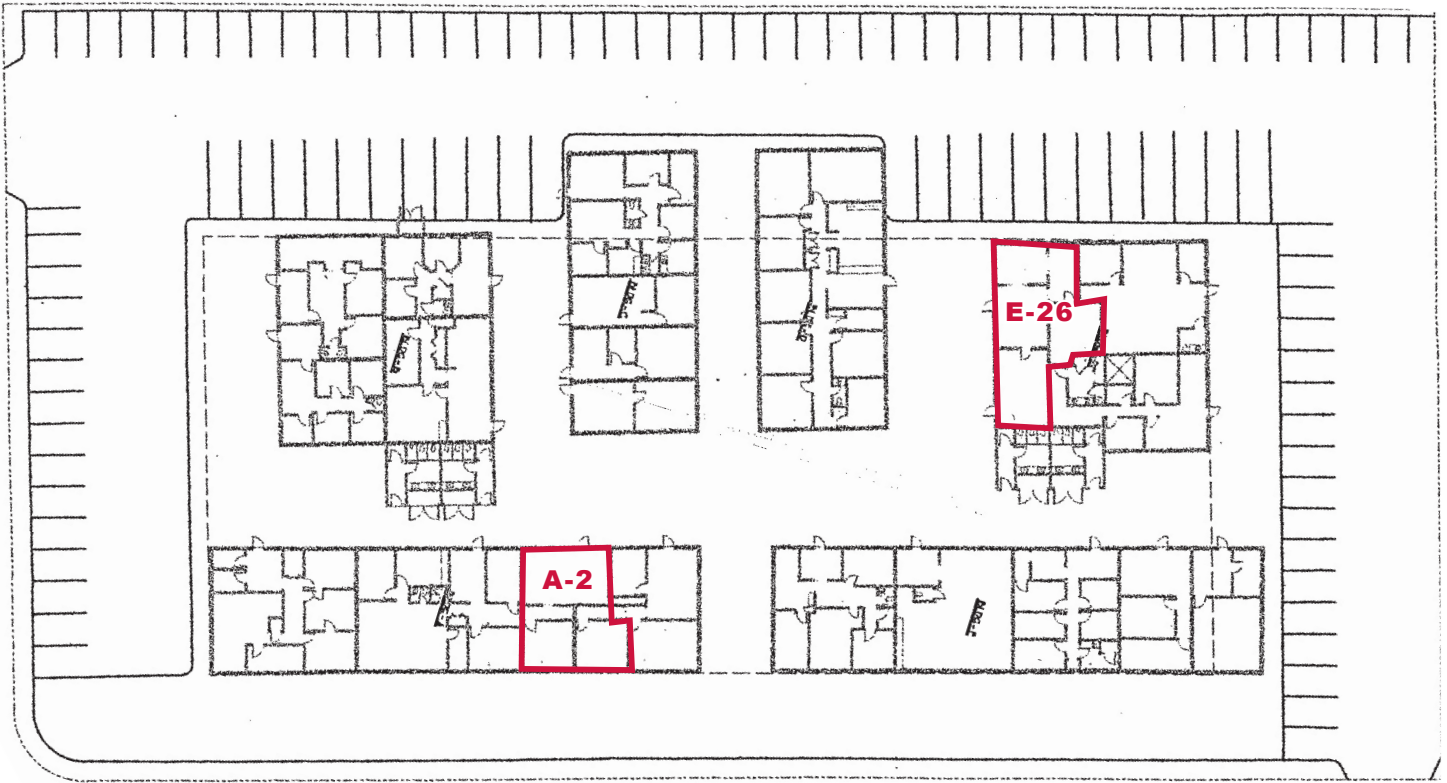
## CONTACT

Wendy Coddington  
BRE #00592566  
wcoddington@lee-associates.com  
D 209.983.6830

All information furnished regarding property for sale, rental or financing is from sources deemed reliable, but no warranty or representation is made to the accuracy thereof and same is submitted to errors, omissions, change of price, rental or other conditions prior to sale, lease or financing or withdrawal without notice. No liability of any kind is to be imposed on the broker herein.



**OFFICE FOR LEASE**  
**PROFESSIONAL OFFICE BUILDING**  
4545 GEORGETOWN PLACE, STOCKTON, CA



Wendy Coddington  
BRE #00592566  
wcoddington@lee-associates.com  
D 209.983.6830

All information furnished regarding property for sale, rental or financing is from sources deemed reliable, but no warranty or representation is made to the accuracy thereof and same is submitted to errors, omissions, change of price, rental or other conditions prior to sale, lease or financing or withdrawal without notice. No liability of any kind is to be imposed on the broker herein.