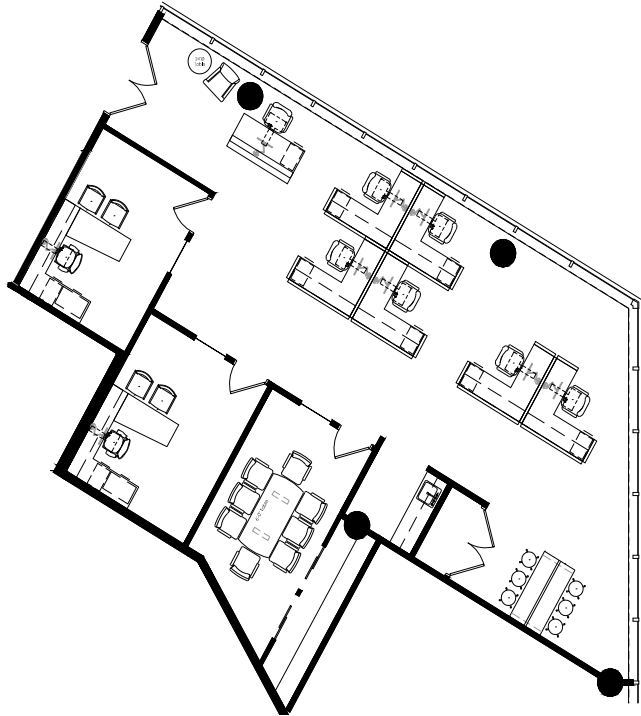


# Westbrook

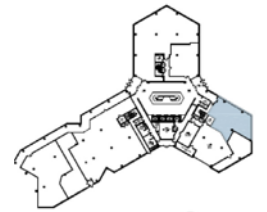
CORPORATE CENTER

1 WESTBROOK CORPORATE CENTER  
WESTCHESTER, IL

SUITE 100 - 2,084 SF



FOR LEASE



Key Plan

## FEATURES

- FULLY FURNISHED MODERN SPEC SUITE
- 7 CUBICLES
- 2 OFFICES AND 1 CONFERENCE ROOM
- KITCHENETTE
- EXTENSIVE WINDOW LINE WITH AN ABUNDANCE OF NATURAL LIGHT



FOR MORE INFORMATION PLEASE CONTACT:

**JOSH ROBBINS**  
FIRST VICE PRESIDENT  
+1 630 573 7821  
JOSH.ROBBINS@CBRE.COM

**PETE ADAMO**  
SENIOR VICE PRESIDENT  
+1 630 573 7053  
PETE.ADAMO@CBRE.COM

**TARA TORBIK**  
ASSOCIATE  
+1 630 573 7822  
TARA.TORBIK@CBRE.COM

# CBRE

© 2017 CBRE, INC. THIS INFORMATION HAS BEEN OBTAINED FROM SOURCES BELIEVED RELIABLE. WE HAVE NOT VERIFIED IT AND MAKE NO GUARANTEE, WARRANTY OR REPRESENTATION ABOUT IT. ANY PROJECTIONS, OPINIONS, ASSUMPTIONS OR ESTIMATES USED ARE FOR EXAMPLE ONLY AND DO NOT REPRESENT THE CURRENT OR FUTURE PERFORMANCE OF THE PROPERTY. YOU AND YOUR ADVISORS SHOULD CONDUCT A CAREFUL, INDEPENDENT INVESTIGATION OF THE PROPERTY TO DETERMINE TO YOUR SATISFACTION THE SUITABILITY OF THE PROPERTY FOR YOUR NEEDS.