

# "Start Up" Space For Lease

840 Yosemite Way

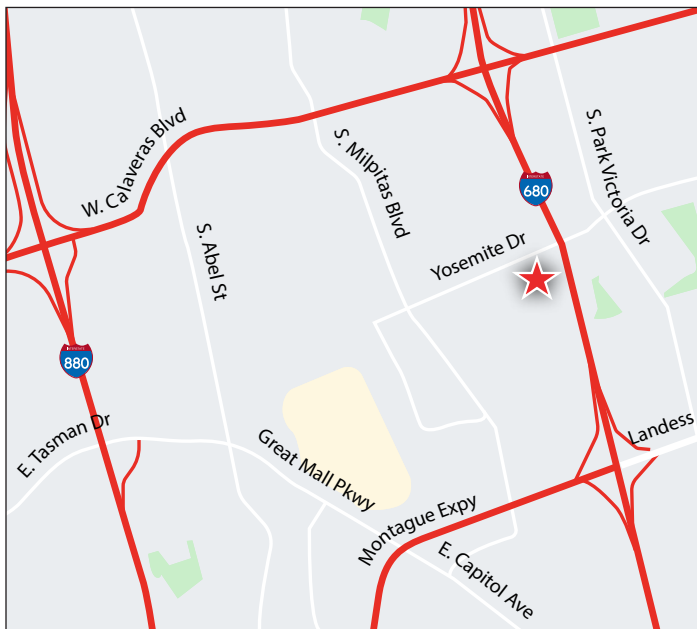
Milpitas, CA

Plug & Play



## Property Size: ±6,183 to ±10,821 RSF

As exclusive agent(s), we are pleased to offer the following space:



- ◆ Plug & Play
- ◆ Well-Spaced Desk Seating Area
- ◆ Stand-Alone Restrooms & Kitchen
- ◆ 3 Private Offices
- ◆ 1 Conference Room
- ◆ 1 Training/All-Hands Room
- ◆ 18 Seats in Open Area
- ◆ 2nd Floor Space - Elevator Served



**Anne Ralston** 408.982.8466 [aralston@ngkf.com](mailto:aralston@ngkf.com) CA RE License #00957374

**Martin Chiechi** 408.987.4178 [mchiechi@ngkf.com](mailto:mchiechi@ngkf.com) CA RE License #00806069

3055 Olin Avenue, Suite 2200, San Jose, CA 95128

[www.ngkf.com](http://www.ngkf.com)

The distributor of this communication is performing acts for which a real estate license is required. The information contained herein has been obtained from sources deemed reliable but has not been verified and no guarantee, warranty or representation, either express or implied, is made with respect to such information. Terms of sale or lease and availability are subject to change or withdrawal without notice.

20-0722 • 07/20

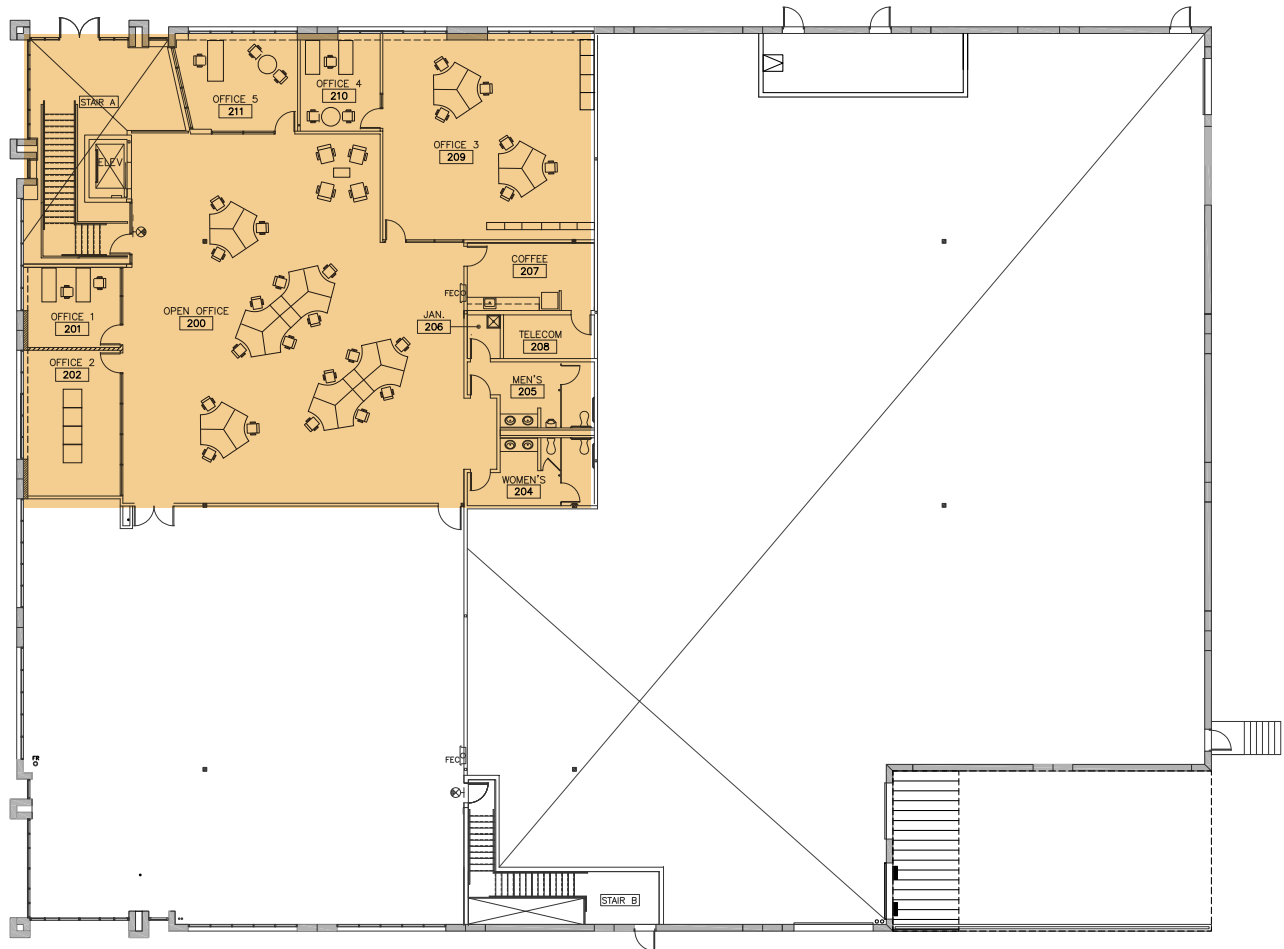
# “Start Up” Space For Lease

840 Yosemite Way

Milpitas, CA

## Option 1

- Office Only – Suite 200
- ±6,183 RSF
- \$1.99 Full Service



**Anne Ralston** 408.982.8466 [aralston@ngkf.com](mailto:aralston@ngkf.com) CA RE License #00957374  
**Martin Chiechi** 408.987.4178 [mchiechi@ngkf.com](mailto:mchiechi@ngkf.com) CA RE License #00806069

3055 Olin Avenue, Suite 2200, San Jose, CA 95128

[www.ngkf.com](http://www.ngkf.com)

The distributor of this communication is performing acts for which a real estate license is required. The information contained herein has been obtained from sources deemed reliable but has not been verified and no guarantee, warranty or representation, either express or implied, is made with respect to such information. Terms of sale or lease and availability are subject to change or withdrawal without notice.

20-0722 • 07/20

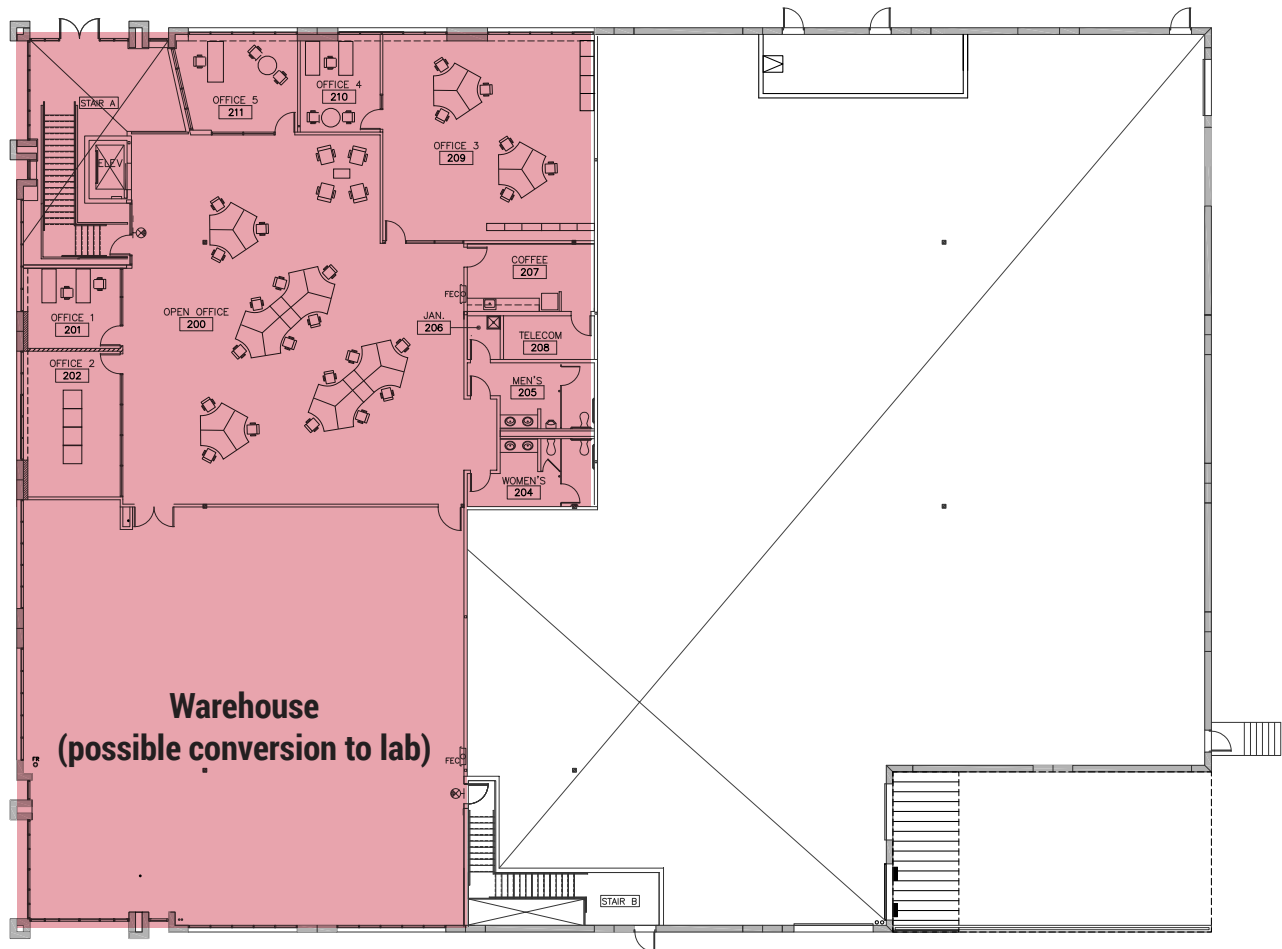
# “Start Up” Space For Lease

840 Yosemite Way

Milpitas, CA

## Option 2

- Office & Warehouse/Lab
- ±10,821 RSF
- ±6,183 SF Office & ±4,638 SF Warehouse/Lab
- \$1.40 Gross (excludes utilities and janitorial)



**Anne Ralston** 408.982.8466 [aralston@ngkf.com](mailto:aralston@ngkf.com) CA RE License #00957374  
**Martin Chiechi** 408.987.4178 [mchiechi@ngkf.com](mailto:mchiechi@ngkf.com) CA RE License #00806069

3055 Olin Avenue, Suite 2200, San Jose, CA 95128

[www.ngkf.com](http://www.ngkf.com)



# "Start Up" Space For Lease

840 Yosemite Way

Milpitas, CA



**Anne Ralston** 408.982.8466 [aralston@ngkf.com](mailto:aralston@ngkf.com) CA RE License #00957374  
**Martin Chiechi** 408.987.4178 [mchiechi@ngkf.com](mailto:mchiechi@ngkf.com) CA RE License #00806069

3055 Olin Avenue, Suite 2200, San Jose, CA 95128

[www.ngkf.com](http://www.ngkf.com)

The distributor of this communication is performing acts for which a real estate license is required. The information contained herein has been obtained from sources deemed reliable but has not been verified and no guarantee, warranty or representation, either express or implied, is made with respect to such information. Terms of sale or lease and availability are subject to change or withdrawal without notice.

20-0722 • 07/20