

FOR LEASE - OHIO CITY

1550 W. 25th St. | CLEVELAND, OH 44113



Hingetown **OHC**

RISING STAR  189,000 visitors per year

TRANSFORMER STATION 20,000 visitors per year



15,000 vehicles per day on Detroit Rd



54,000 cyclists per year on Detroit Rd

PROPERTY HIGHLIGHTS

- Located in Ohio City with 15,462 VPD on W. 25th St.
- Self contained parking on-site
- In close proximity to: Hingetown, St. Ignatius HS, West Side Market

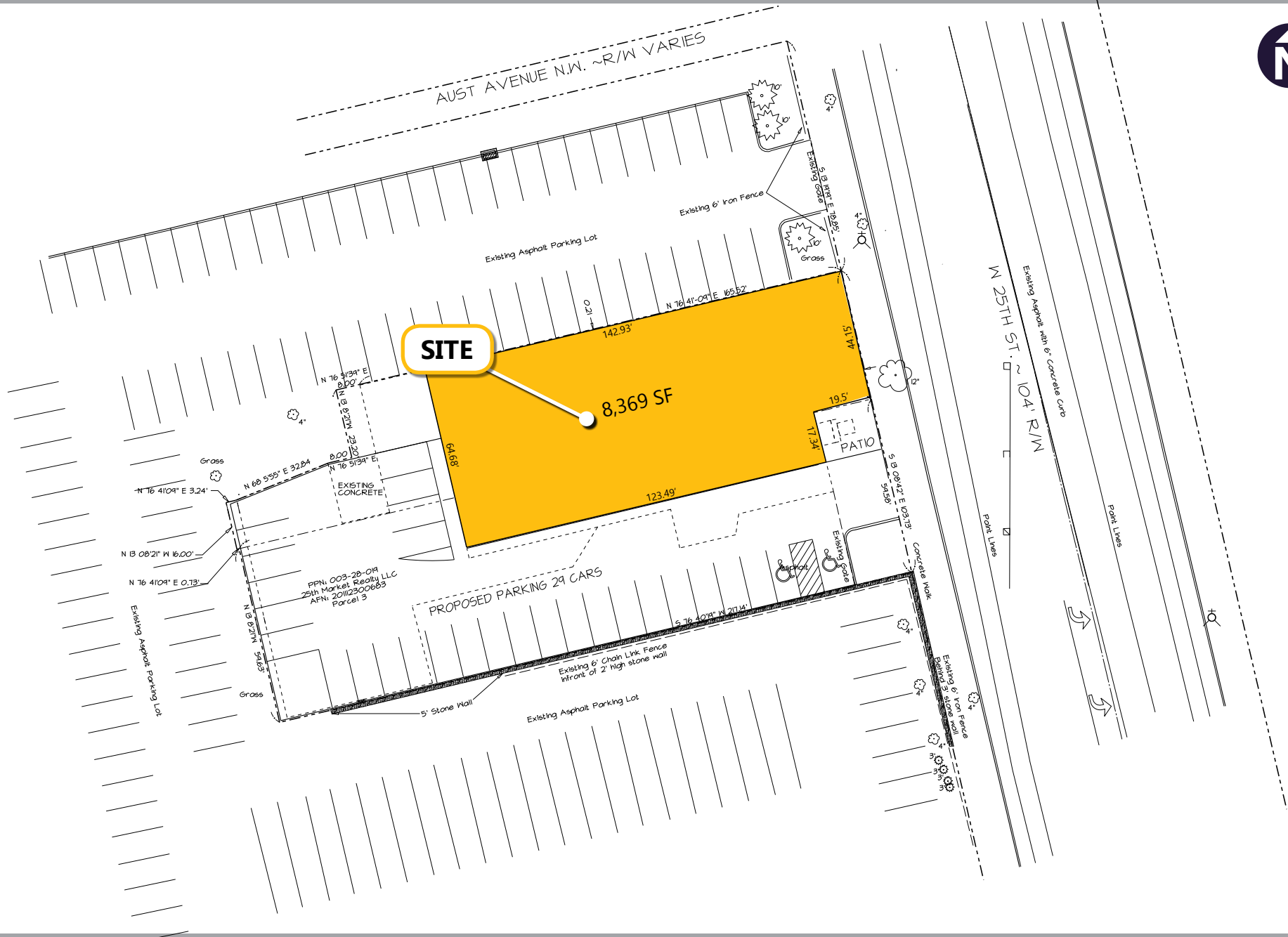
Estimated Population	Average HH Income	Daytime Employees
1 Mile: 5,376	1 Mile: \$78,146	1 Mile: 7,629
3 Miles: 42,230	3 Miles: \$81,021	3 Miles: 37,460
5 Miles: 112,412	5 Miles: \$83,775	5 Miles: 77,058
7 Minutes: 80,960	7 Minutes: \$86,381	7 Minutes: 69,020

DEMOGRAPHICS

For more information contact:
Catherine Lueckel
216.831.8100 | clueckel@passovgroup.com

Allison Giomuso
216.831.8100 | agiomuso@passovgroup.com

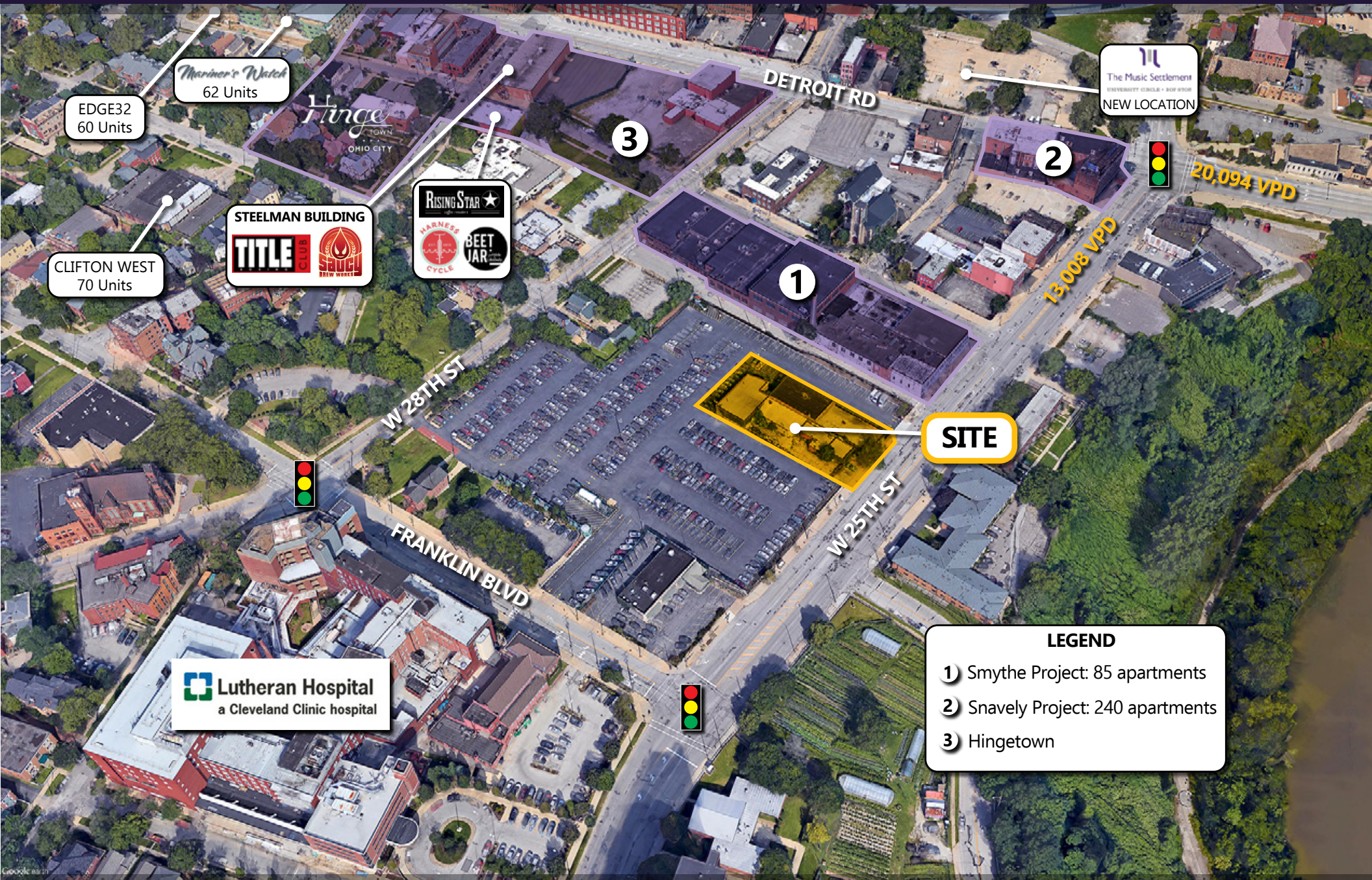
PASSOV
real estate group
COMMERCIAL BROKERAGE



NOW LEASING

1550 W. 25th St. | CLEVELAND, OH 44113

SITE AERIAL



EDGE32
60 Units

Mariner's Nest
62 Units

CLIFTON WEST
70 Units

STEELMAN BUILDING
TITLE CLUB SAUGI NEW WORKS

RISING STAR
HARNESS BEET JAR
CYCLE

Lutheran Hospital
a Cleveland Clinic hospital

DETROIT RD

W 28TH ST

FRANKLIN BLVD

W 25TH ST

SITE

The Music Settlement
UNIVERSITY CIRCLE • BOY WOOD
NEW LOCATION

20,094 VPD

13,008 VPD

LEGEND

- 1 Smythe Project: 85 apartments
- 2 Snively Project: 240 apartments
- 3 Hingetown

For more information contact:
Catherine Lueckel
216.831.8100 | clueckel@passovgroup.com

Allison Giomuso
216.831.8100 | agiomuso@passovgroup.com

PASSOV
real estate group
COMMERCIAL BROKERAGE



SITE

The Music Settlement
UNIVERSITY CIRCLE • 805 900B
NEW LOCATION

STEELMAN BUILDING
TITLE CLUB SAUCU
BREW WORKS

Mariner's Watch
62 Units

EDGE32
60 Units

1
2
3

RISING STAR
HARVEST CYCLE
BEET JAR

CLIFTON WEST
70 Units

NANO BREW
MICHELLE'S HOMEWINE
SOHO KITCHEN AND BAR
MARKET GARDEN BREWERY

Lutheran Hospital
a Cleveland Clinic hospital

ST IGNATIUS HIGH SCHOOL

WEST SIDE MARKET
HARLEQUIN STREET MARKET

crop
PENZEY'S SPICES

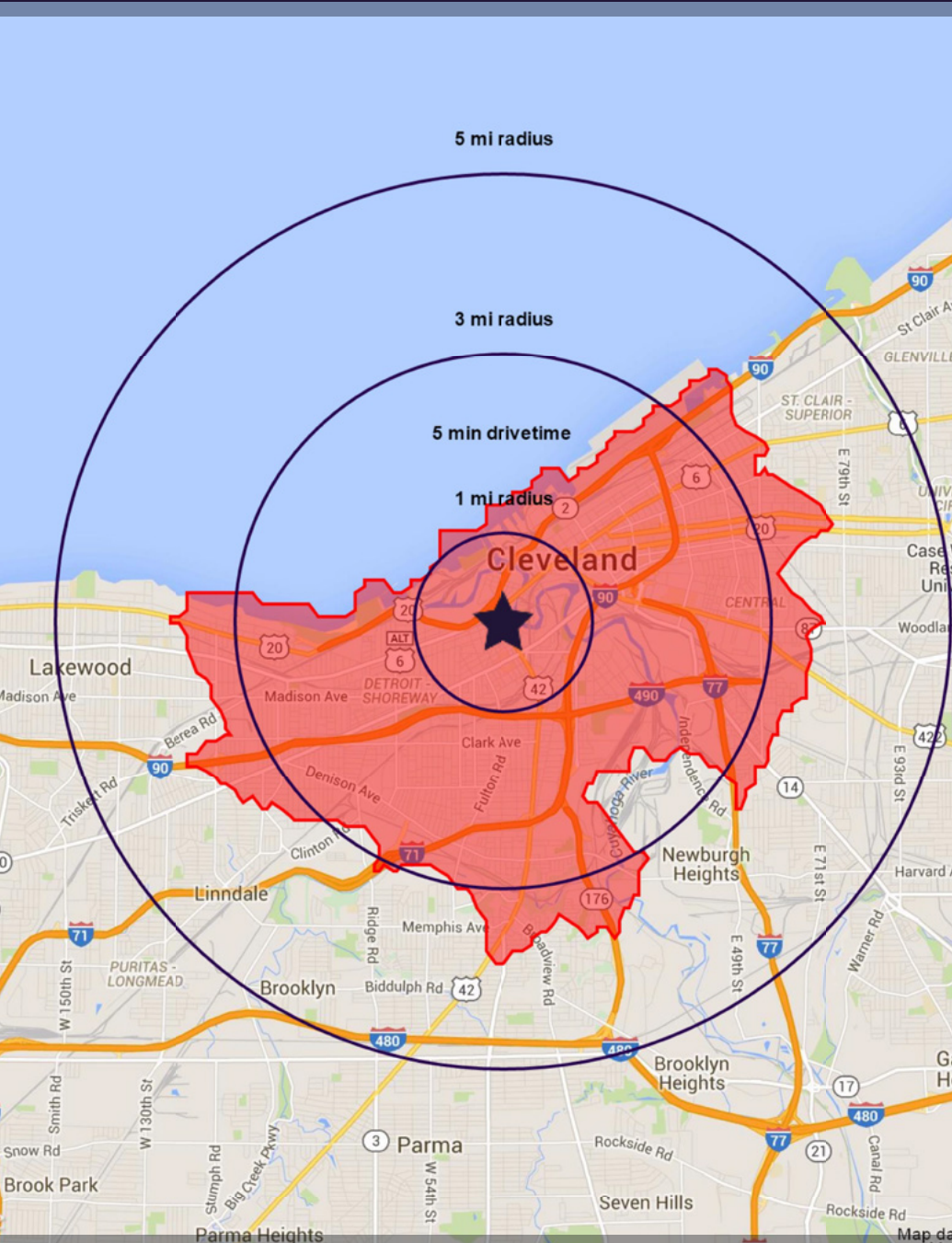
GREAT LAKES
LIVING FIG

DAVE'S

bar CEN TO

LEGEND

- 1** Smythe Project: 85 apartments
- 2** Snaveley Project: 240 apartments
- 3** Hingetown



1550 W 25th St Cleveland, OH 44113-3104		1 mi radius	3 mi radius	5 mi radius	5 min drivetime
POPULATION	2016 Estimated Population	13,296	103,955	270,301	128,374
	2021 Projected Population	13,533	107,447	276,329	132,300
	2010 Census Population	12,983	101,242	266,023	125,475
	2000 Census Population	12,828	109,729	305,862	135,934
	Projected Annual Growth 2016 to 2021	0.4%	0.7%	0.4%	0.6%
	Historical Annual Growth 2000 to 2016	0.2%	-0.3%	-0.7%	-0.3%
HOUSEHOLDS	2016 Median Age	34.3	31.6	34.7	32.4
	2016 Estimated Households	6,150	43,510	119,207	55,628
	2021 Projected Households	6,386	46,086	124,476	58,668
	2010 Census Households	5,807	40,792	113,898	52,553
	2000 Census Households	4,975	41,894	124,915	54,014
	Projected Annual Growth 2016 to 2021	0.8%	1.2%	0.9%	1.1%
RACE AND ETHNICITY	Historical Annual Growth 2000 to 2016	1.5%	0.2%	-0.3%	0.2%
	2016 Estimated White	51.9%	48.4%	52.8%	49.4%
	2016 Estimated Black or African American	33.5%	32.6%	34.2%	32.6%
	2016 Estimated Asian or Pacific Islander	2.0%	3.2%	2.5%	3.3%
	2016 Estimated American Indian or Native Alaskan	0.5%	0.5%	0.4%	0.5%
	2016 Estimated Other Races	12.1%	15.3%	10.1%	14.2%
INCOME	2016 Estimated Hispanic	19.4%	23.5%	14.8%	21.5%
	2016 Estimated Average Household Income	\$53,649	\$41,934	\$42,924	\$41,763
	2016 Estimated Median Household Income	\$34,899	\$29,652	\$32,762	\$29,963
	2016 Estimated Per Capita Income	\$26,626	\$18,320	\$19,299	\$18,788
EDUCATION (AGE 25+)	2016 Estimated Elementary (Grade Level 0 to 8)	5.4%	7.5%	5.7%	7.0%
	2016 Estimated Some High School (Grade Level 9 to 11)	15.0%	18.0%	16.0%	17.3%
	2016 Estimated High School Graduate	21.4%	28.0%	30.6%	28.3%
	2016 Estimated Some College	18.7%	20.2%	21.5%	20.5%
	2016 Estimated Associates Degree Only	5.2%	5.0%	6.1%	5.3%
	2016 Estimated Bachelors Degree Only	20.2%	11.8%	12.1%	12.0%
BUSINESS	2016 Estimated Graduate Degree	14.2%	9.5%	8.0%	9.5%
	2016 Estimated Total Businesses	1,284	8,272	15,088	9,338
	2016 Estimated Total Employees	22,010	168,978	300,112	182,304
	2016 Estimated Employee Population per Business	17.1	20.4	19.9	19.5
2016 Estimated Residential Population per Business	10.4	12.6	17.9	13.7	