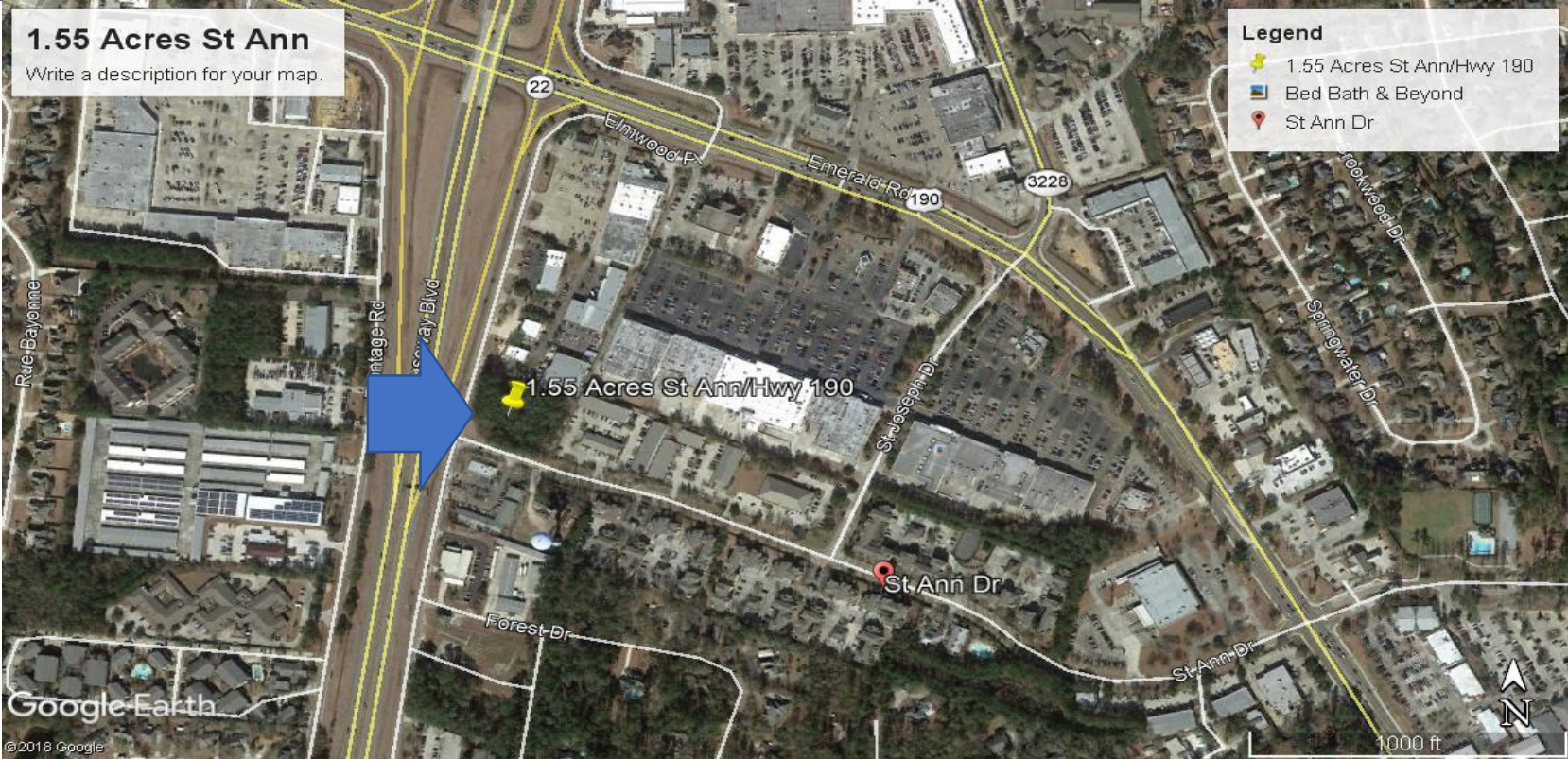


# PRIME TRACT Mandeville, LA



**LATTER & BLUM**  
Since 1916 INC/REALTORS®

Contact **Jim Lark,**

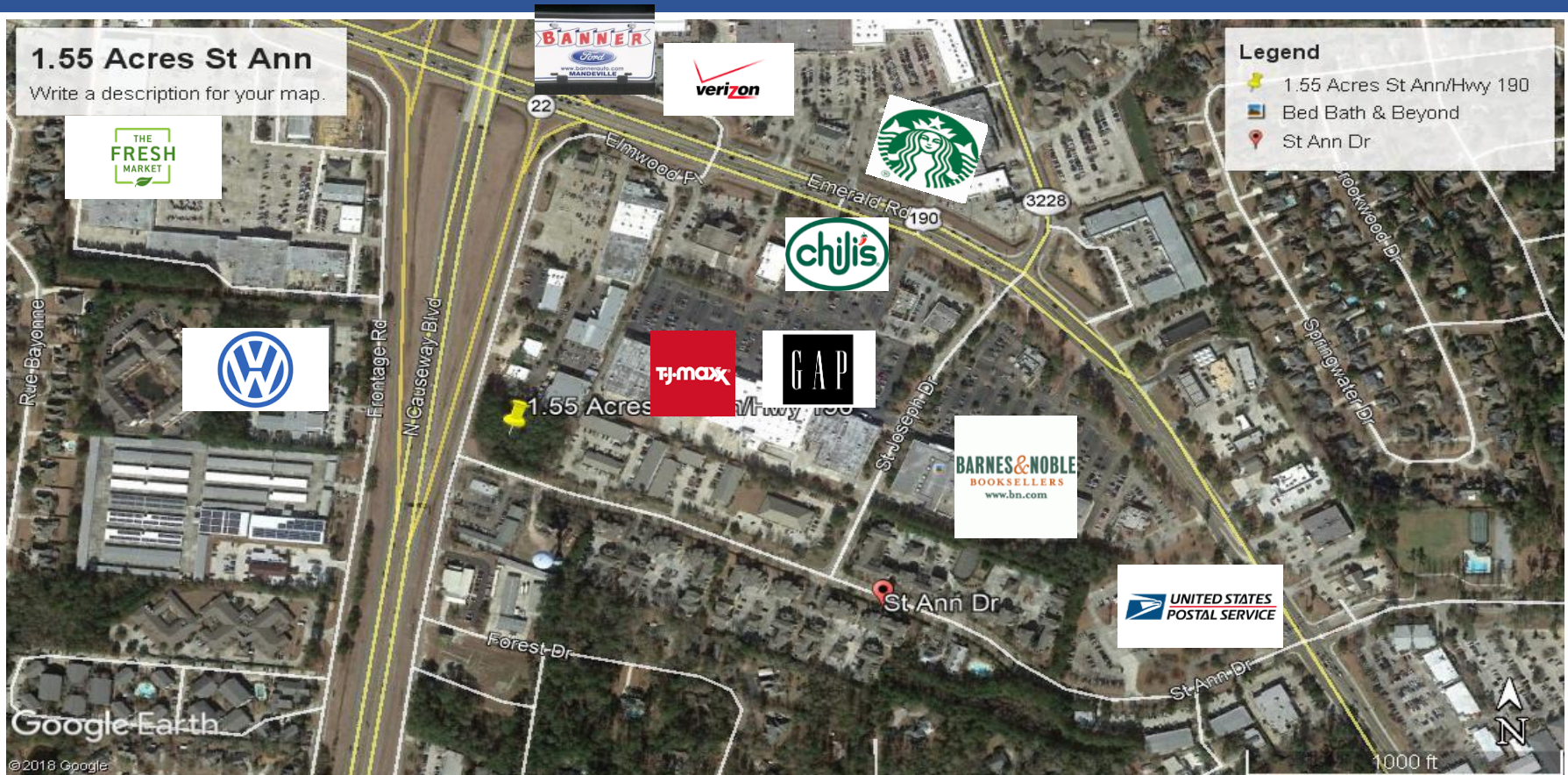


**CCIM Institute**  
Commercial Real Estate's  
Global Standard for Professional Achievement

Office – 985.626.5695  
Direct - 985.626.9920  
[jlark@airmail.net](mailto:jlark@airmail.net)

Latter Blum Inc  
1151 N Causeway Blvd  
Mandeville, LA 70471

# Location Map



**LATTER & BLUM**  
 Since 1916 INC/REALTORS<sup>®</sup>

Contact **Jim Lark,**

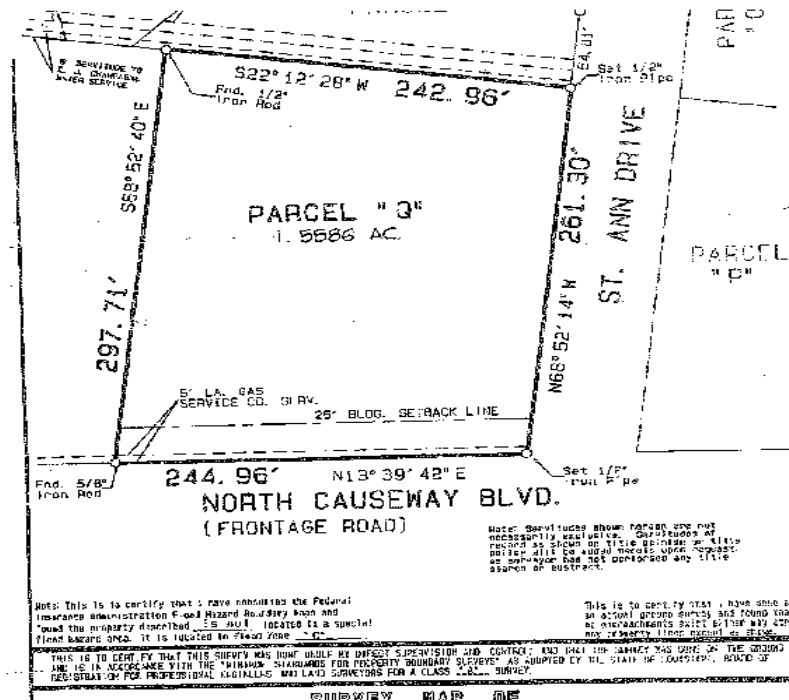


**CCIM Institute**  
 Commercial Real Estate's  
 Global Standard for Professional Achievement

Office – 985.626.5695  
 Direct - 985.626.9920  
**jlark@airmail.net**

Latter Blum Inc  
 1151 N Causeway Blvd  
 Mandeville, LA 70471

# Survey & Information



## 1.55 Acre Parcel

- 245 ft fronting Hwy 190 Service Rd.
- Zoning B2
- Minutes to Causeway
- Close to major shopping district, Post Office, Banks!

Listing Price - **\$2,200,000**



**LATTER & BLUM**  
Since 1916 INC./REALTORS®

Contact **Jim Lark**,



**CCIM Institute**  
Commercial Real Estate's  
Global Standard for Professional Achievement

Office – 985.626.5695  
Direct - 985.626.9920  
[jlark@airmail.net](mailto:jlark@airmail.net)

Latter Blum Inc  
1151 N Causeway Blvd  
Mandeville, LA 70471