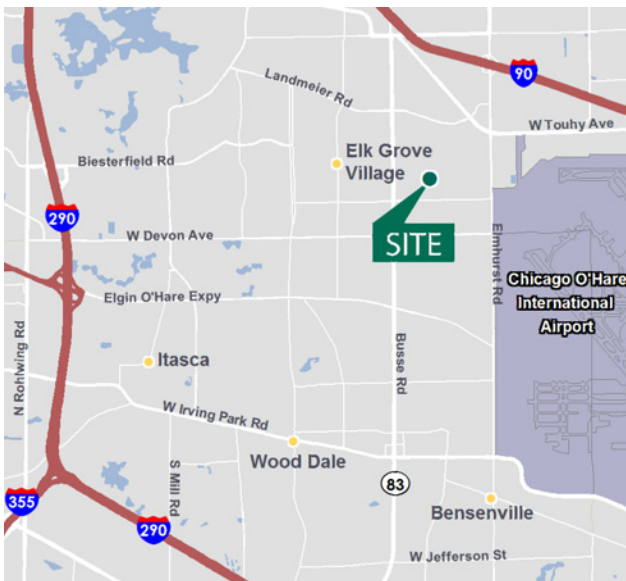


# Prologis Elk Grove Village

1501 Nicholas Blvd.

Elk Grove Village, IL 60007 USA

**225,006 Square Feet Industrial Space For Lease**



## location

- Central O'Hare location
- Immediate access to the full interchange at Elmhurst Road/I-90

## facility

- 225,006 sf (divisible)
- 27,150 sf office
- 1,504 sf warehouse office
- 20' clear height
- 22 dock doors
- 2 drive-in doors
- 14 rail doors
- 33'-6" to 35'-6" column spacing
- 144 parking spaces



**Lee & Associates**  
Chris Nelson  
cnelson@lee-associates.com  
ph +1 773.355.3011  
fax +1 847.233.0068  
cell +1 773.655.5689  
9450 W. Bryn Mawr Avenue,  
Suite 550  
Rosemont, IL 60018

**Lee & Associates**  
Kenneth P. Franzese  
kfranzese@lee-associates.com  
ph +1 773.355.3005  
fax +1 847.233.0068  
cell +1 847.456.4213  
9450 W. Bryn Mawr Avenue,  
Suite 550  
Rosemont, IL 60018

**Lee & Associates**  
John T. Cassidy  
jcassidy@lee-associates.com  
ph +1 773.355.3006  
fax +1 847.233.0068  
cell +1 312.371.0098  
9450 W. Bryn Mawr Avenue,  
Suite 550  
Rosemont, IL 60018

**Prologis**  
James Neswold  
jneswold@prologis.com  
ph +1 847.292.3924  
fax +1 847.566.0465  
cell +1 847.571.0592  
6250 River Road,  
Suite 1100  
Rosemont, IL. 60018

# Prologis Elk Grove Village

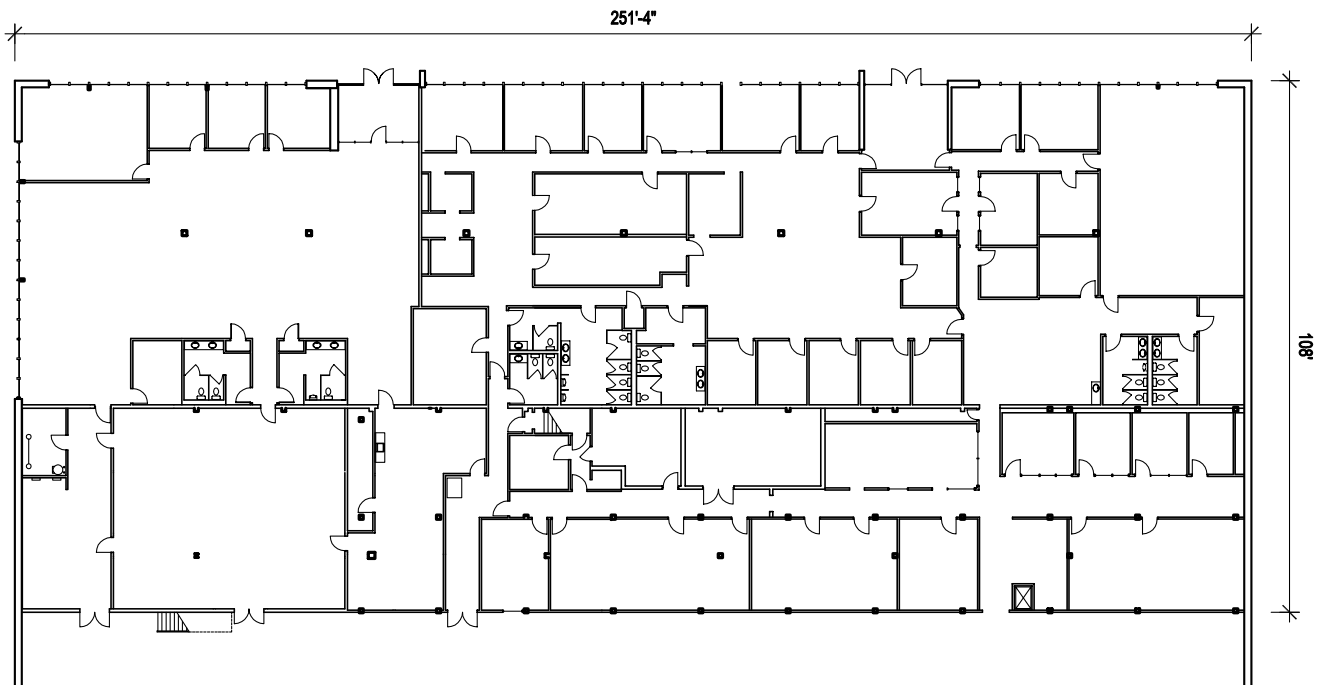
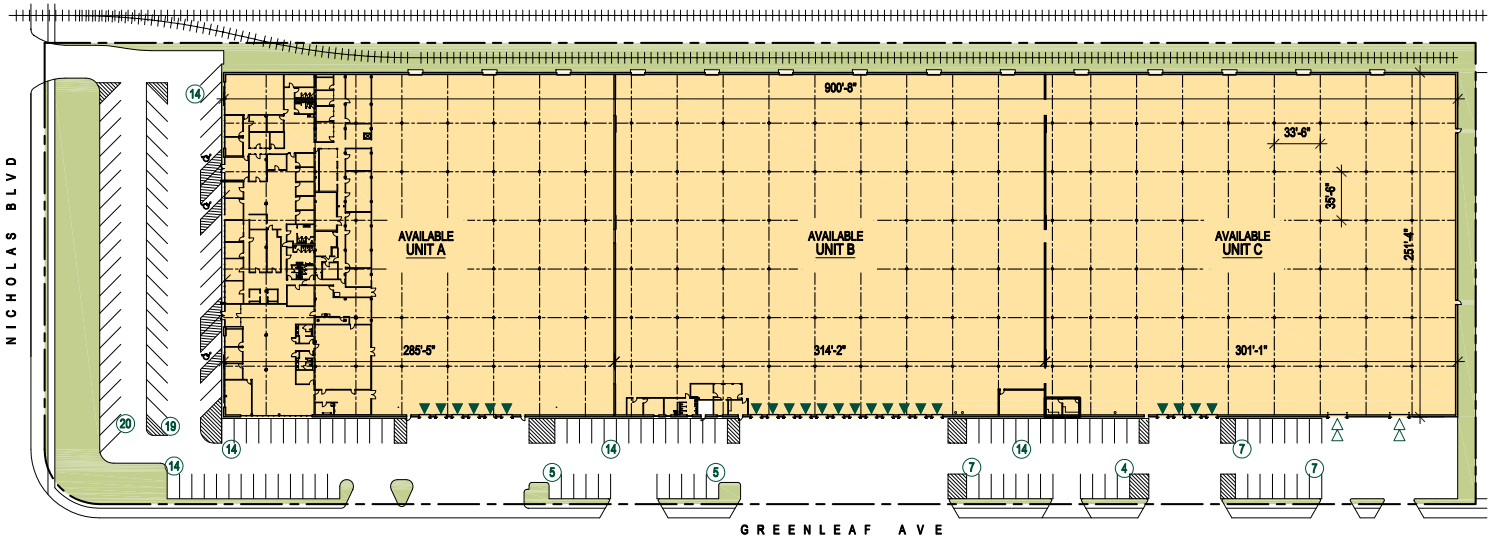
1501 Nicholas Blvd.

Elk Grove Village, IL 60007 USA

**225,006 Square Feet Industrial Space For Lease**



**PROLOGIS**



**Lee & Associates**  
Chris Nelson  
cnelson@lee-associates.com  
ph +1 773.355.3011  
fax +1 847.233.0068  
cell +1 773.655.5689  
9450 W. Bryn Mawr Avenue,  
Suite 550  
Rosemont, IL 60018

**Lee & Associates**  
Kenneth P. Franzese  
kfranzese@lee-associates.com  
ph +1 773.355.3005  
fax +1 847.233.0068  
cell +1 847.456.4213  
9450 W. Bryn Mawr Avenue,  
Suite 550  
Rosemont, IL 60018

**Lee & Associates**  
John T. Cassidy  
jcassidy@lee-associates.com  
ph +1 773.355.3006  
fax +1 847.233.0068  
cell +1 312.371.0098  
9450 W. Bryn Mawr Avenue,  
Suite 550  
Rosemont, IL 60018

**Prologis**  
James Neswold  
jneswold@prologis.com  
ph +1 847.292.3924  
fax +1 847.566.0465  
cell +1 847.571.0592  
6250 River Road,  
Suite 1100  
Rosemont, IL. 60018