



FOR LEASE
COLLEGE POINT BUSINESS CENTER
2600 E Bidwell Street / Folsom, California

±1,333 - ±1,378 SF AVAILABLE



PROPERTY FEATURES

- Two story ±40,000 SF multi-tenant office building located 1 mile north of Highway 50
- Building constructed in 2004
- Parking ratio of 4 per 1,000 sf
- Numerous nearby restaurants, banking & shopping options
- Within walking distance of Palladio at Broadstone shopping center

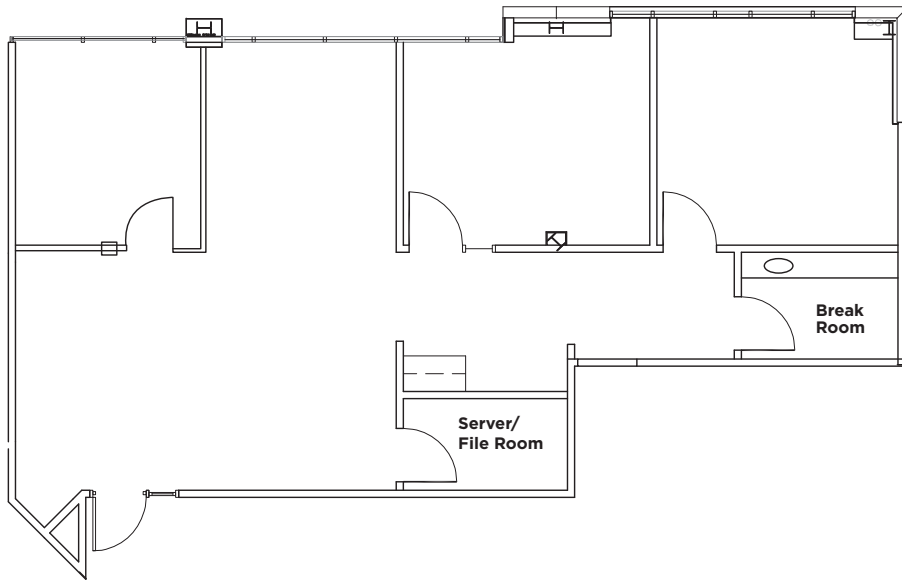


KRIS KALMBACH

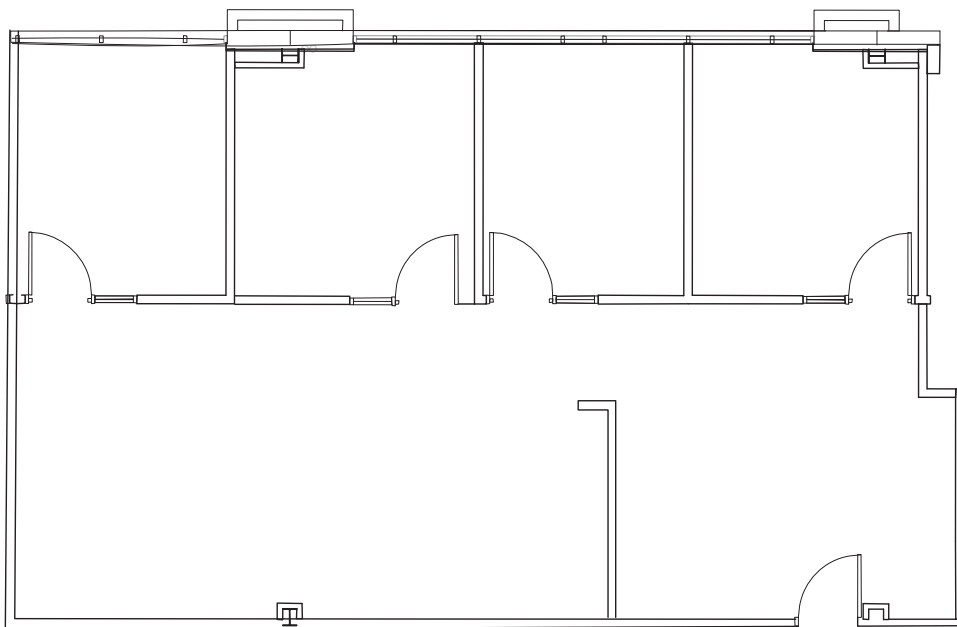
Senior Director
916.288.4421
kris.kalmbach@cushwake.com
LIC #1436668

400 Capitol Mall, Suite 1800
Sacramento, CA 95814
main 916.288.4800
cushmanwakefield.com
LIC #00950620

SUITE 110 | ±1,333 RSF



SUITE 140 | ±1,378 RSF



KRIS KALMBACH

Senior Director
916.288.4421
kris.kalmbach@cushwake.com
LIC #1436668

400 Capitol Mall, Suite 1800
Sacramento, CA 95814
main 916.288.4800
cushmanwakefield.com
LIC #00950620