

22650 W. EIGHT MILE ROAD  
SOUTHFIELD, MICHIGAN



**SIGNATURE  
ASSOCIATES**  
KNOW SIGNATURE | KNOW RESULTS

RETAIL FOR SALE  
2,249 Square Feet Available

**FORMER TACO BELL**



## PROPERTY FEATURES

- 2,249 available square feet
- Zoned I-L
- 25 parking spaces
- Sale Price: \$550,000 (\$244.55/sq.ft.)

**Comments:** Rare opportunity to buy restaurant with drive-thru on Sam's Club pad. Former Taco Bell sits on 1.07 acres on busy Eight Mile Road with many other national retailers nearby.



For more information, please contact:

**MARVIN PETROUS**  
(248) 359 0647  
mpetrous@signatureassociates.com

**SIGNATURE ASSOCIATES**  
One Towne Square, Suite 1200  
Southfield, MI 48076  
www.signatureassociates.com

# 22650 W. Eight Mile Road – Southfield, Michigan

## Retail For Sale

2,249  
Square Feet  
AVAILABLE

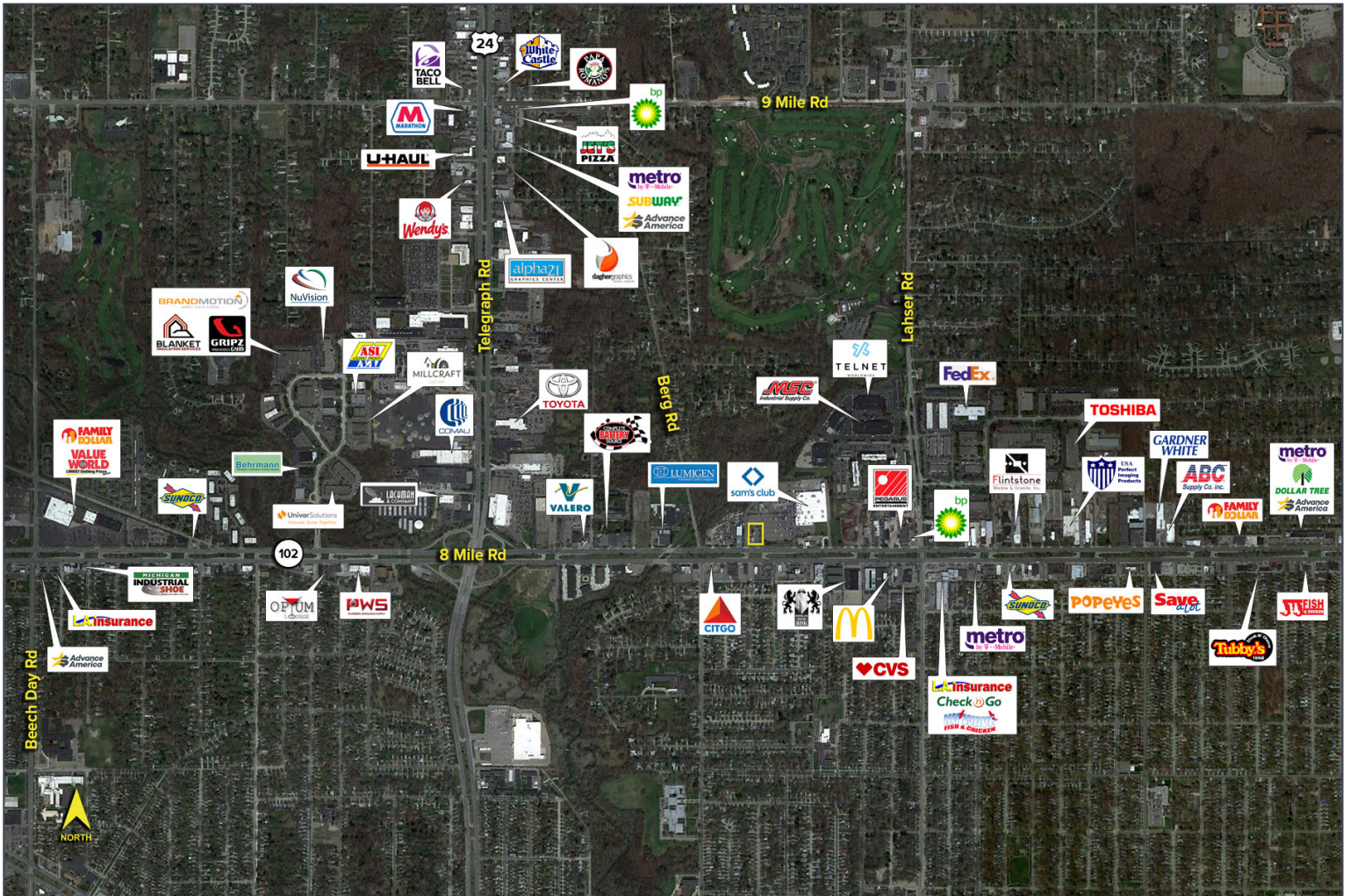


### DEMOGRAPHICS

	POPULATION	MED. HH INCOME
1 MILE	12,575	\$42,717
3 MILE	104,349	\$44,974
5 MILE	308,774	\$51,584

### TRAFFIC COUNTS (TWO-WAY)

46,434	8 Mile E. of Telegraph Rd. 2-Way
40,462	8 Mile W. of Telegraph Rd. 2-Way
62,043	Telegraph Rd. N. of 8 Mile 2-Way
61,125	Telegraph Rd. S. of 8 Mile 2-Way



For more information, please contact:  
**MARVIN PETROUS**  
 (248) 359 0647  
 mpetrous@signatureassociates.com

**SIGNATURE ASSOCIATES**  
 One Towne Square, Suite 1200  
 Southfield, MI 48076  
 www.signatureassociates.com

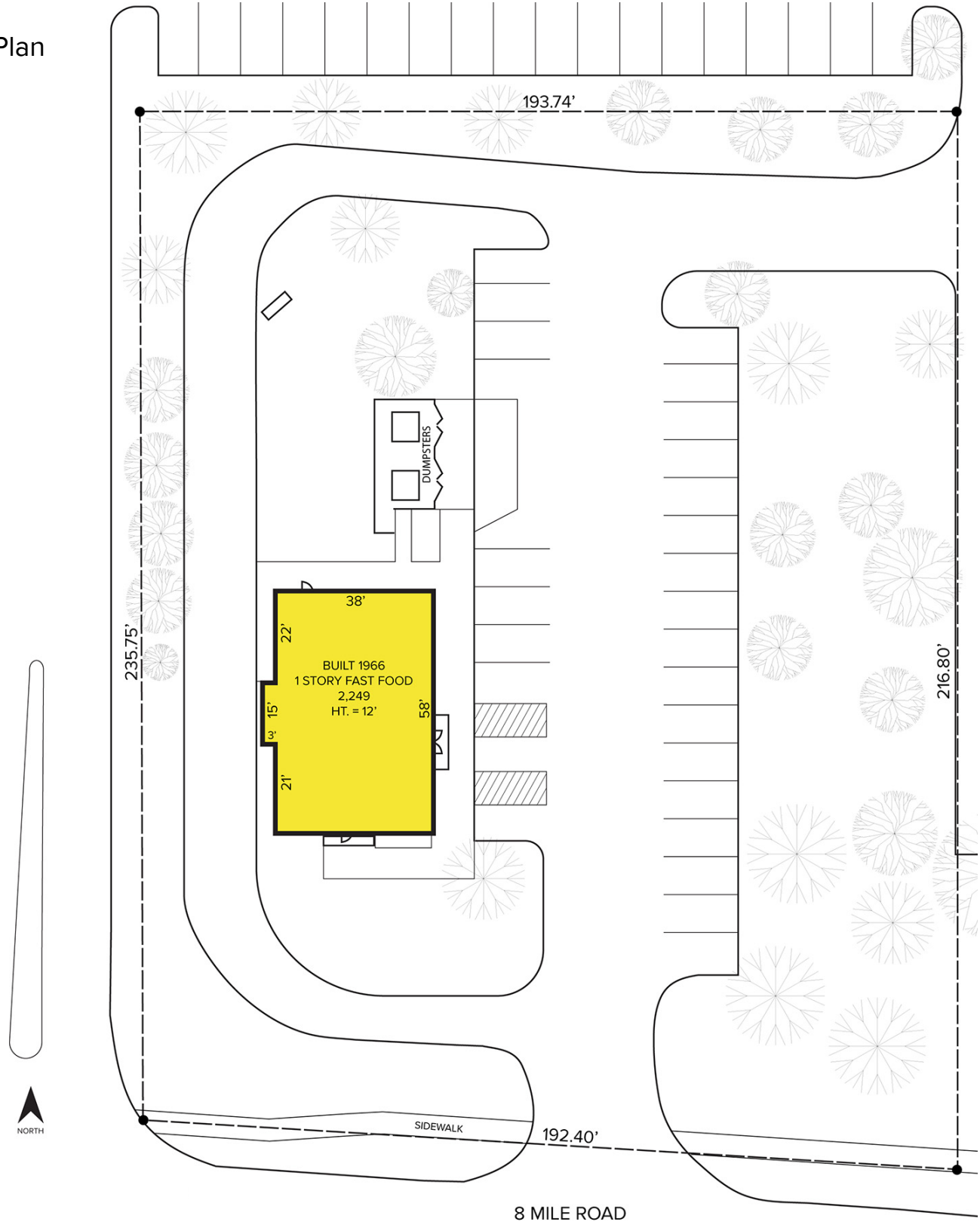
Information is subject to verification and no liability for errors or omissions is assumed. Price is subject to change and listing withdrawal.

# 22650 W. Eight Mile Road – Southfield, Michigan

Retail For Sale

2,249  
Square Feet  
AVAILABLE

## Site Plan



For more information, please contact:  
**MARVIN PETROUS**  
(248) 359 0647  
mpetrous@signatureassociates.com

**SIGNATURE ASSOCIATES**  
One Towne Square, Suite 1200  
Southfield, MI 48076  
www.signatureassociates.com

Information is subject to verification and no liability for errors or omissions is assumed. Price is subject to change and listing withdrawal.