



# SEC & SWC OF 62ND & COTTAGE GROVE SITES

6251 & 6196 S. COTTAGE GROVE AVE., CHICAGO, IL 60637



**FOR SALE OR GROUND LEASE | DEVELOPMENT SITES**

PRIME VACANT DEVELOPMENT SITES! WOODLAWN NEIGHBORHOOD'S LARGE-SCALE REDEVELOPMENT CONTINUES IN DRAMATIC FASHION! ACROSS THE STREET FROM THE UNIVERSITY OF CHICAGO CAMPUS, 2 BLOCKS FROM U. OF C. MEDICAL CENTER, ON THE CTA BUS LINE, AND A BLOCK FROM CTA GREEN LINE TRAIN COTTAGE GROVE STATION.

- LOT SIZE** | ~18,688 SF & ~19,800 SF
- SALE PRICE** | \$650,000 EACH
- ZONING** | PD 64
- POPULATION** | 142,000+ WITHIN 2 MILES
- AVERAGE HH INCOME** | \$53,000 WITHIN 2 MILES
- TRAFFIC** | 19,100 VEHICLES PER DAY
- WALK SCORE** | 83

SURROUNDING



CONTACT

**JAMES E. MATANKY**  
 312-337-1001 xt. 2015  
 jmatanky@matanky.com

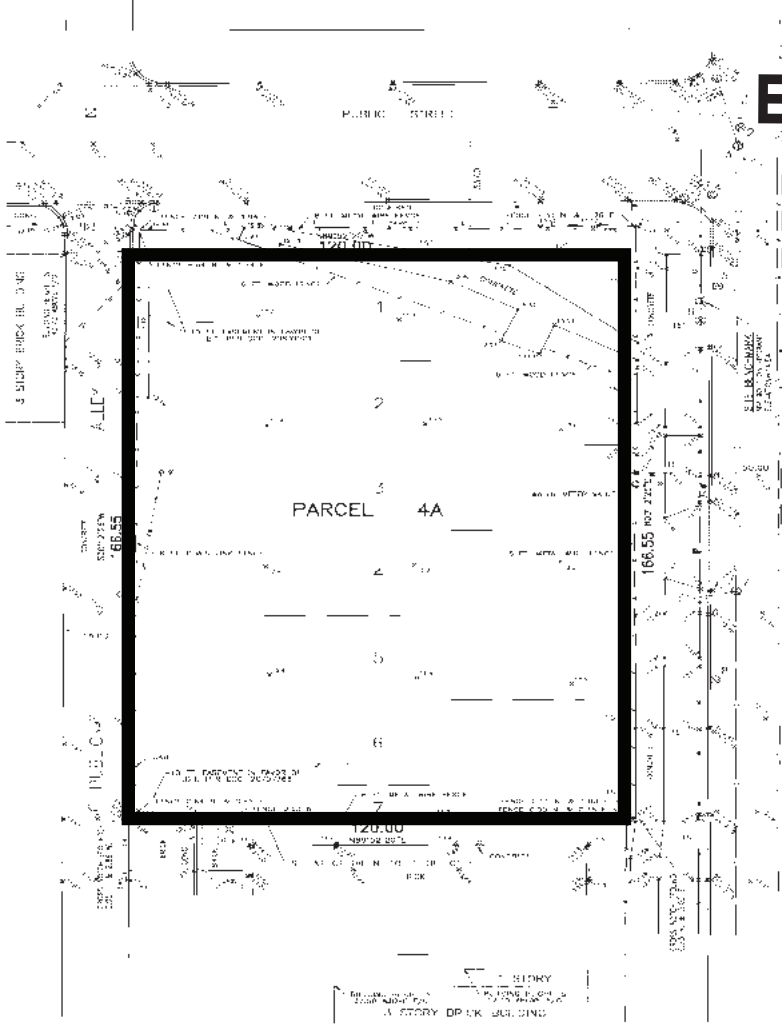
**SCOTT LEVINSON**  
 312-337-1001 xt. 2022  
 slevinson@matanky.com



# SEC & SWC OF 62ND & COTTAGE GROVE SITES

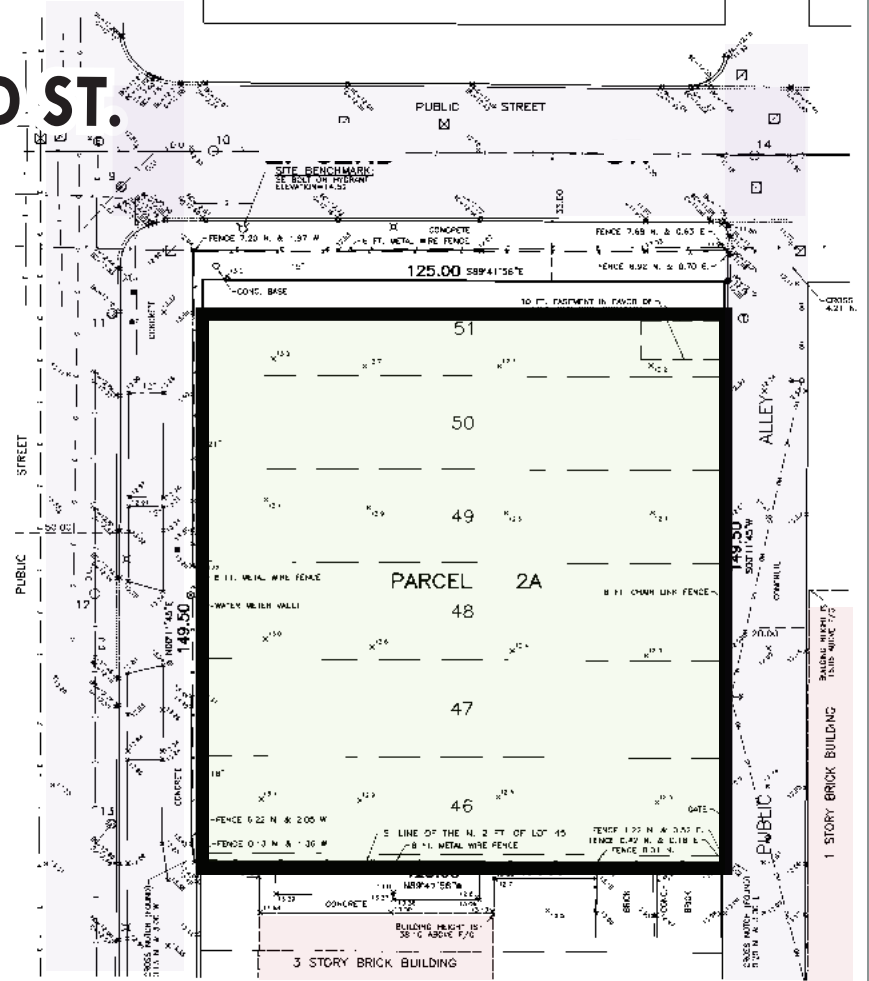
6251 & 6196 S. COTTAGE GROVE AVE., CHICAGO, IL 60637

SITE PLAN

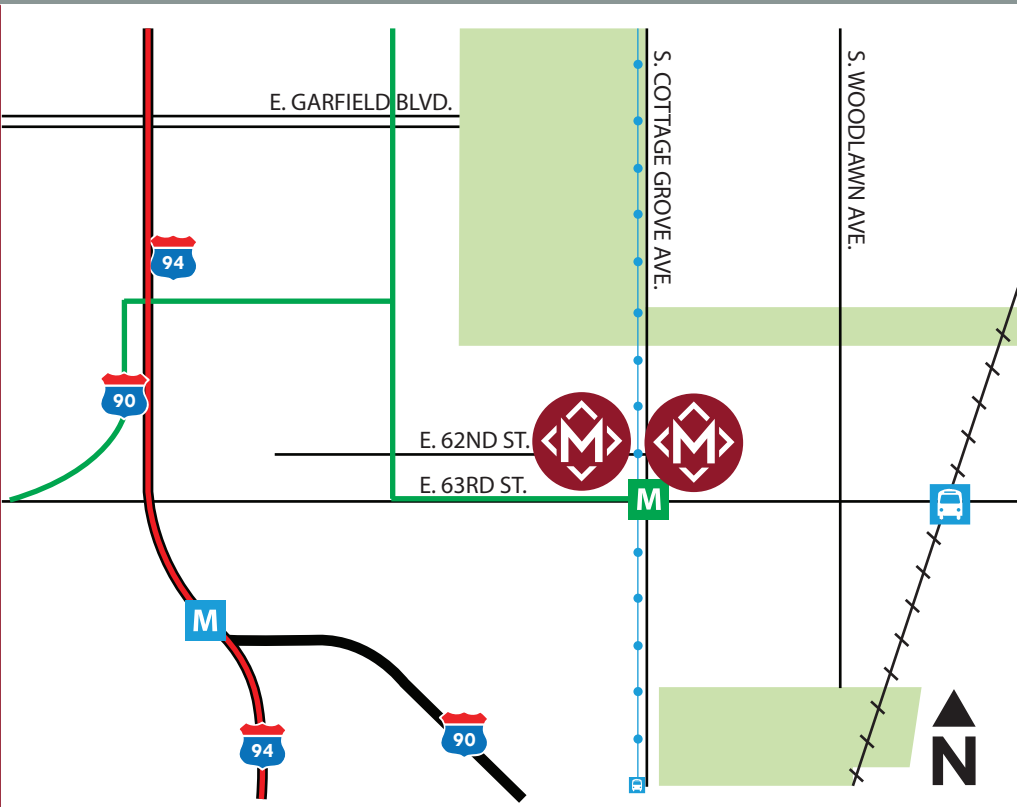


E. 62ND ST.

S. COTTAGE GROVE AVE.



AERIAL



MAP



312-337-1001 | JAMES E. MATANKY | SCOTT LEVINSON

JOIN US ON:



MATANKY REALTY GROUP

WWW.MATANKY.COM