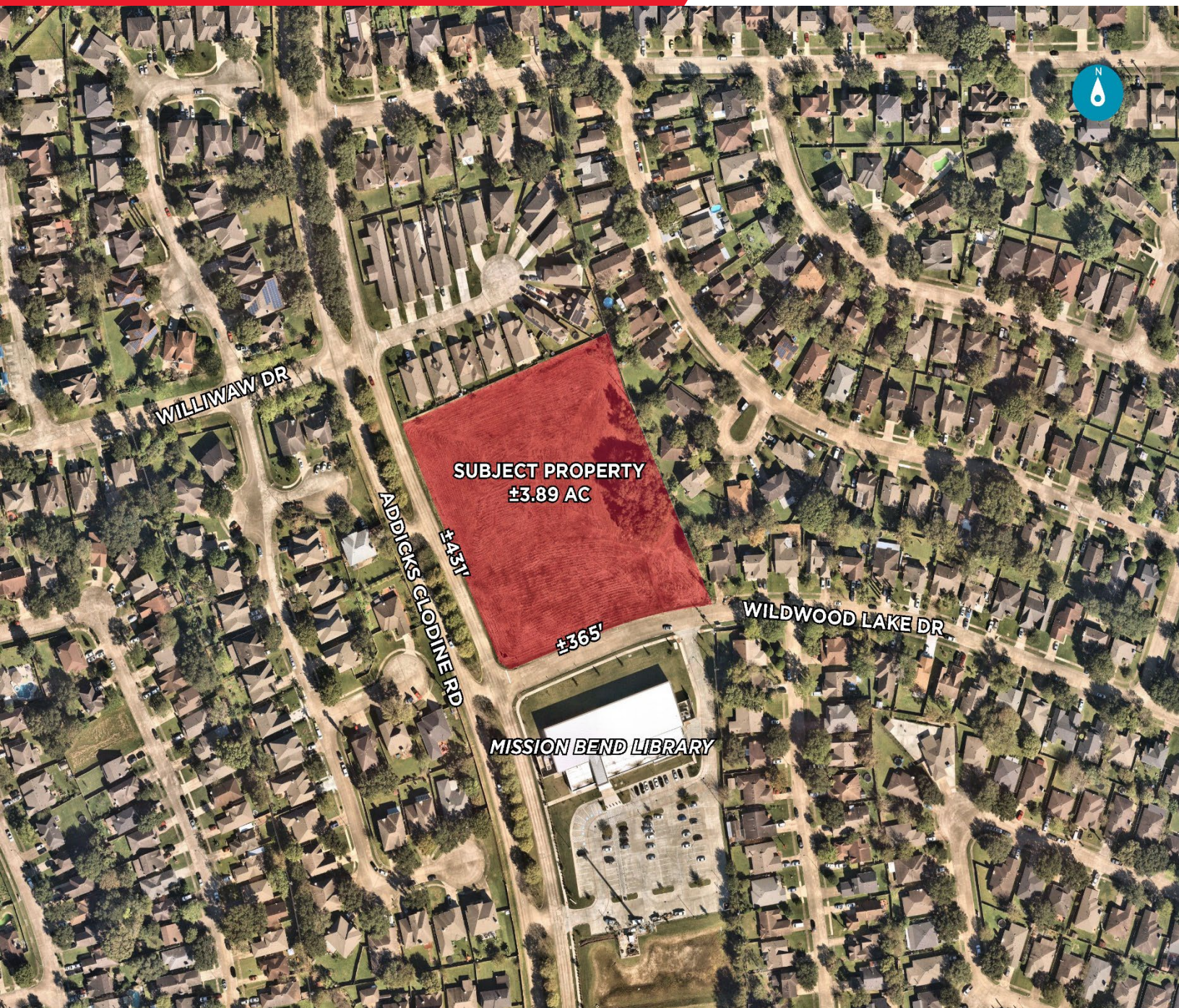


LAND FOR SALE - ±3.89 ACRES

ADDICKS CLODINE RD AND WILDWOOD LAKE DR

HOUSTON, TX 77082



FOR MORE INFORMATION CONTACT:

MEREDITH T. CULLEN

Phone: +1 (713) 331-1809

Email: meredith.cullen@cushwake.com

DAVID L. COOK

Phone: +1 (713) 963-2888

Email: david.cook@cushwake.com

©2021 Cushman & Wakefield. All rights reserved. The information contained in this communication is strictly confidential. This information has been obtained from sources believed to be reliable but has not been verified. NO WARRANTY OR REPRESENTATION, EXPRESS OR IMPLIED, IS MADE AS TO THE CONDITION OF THE PROPERTY (OR PROPERTIES) REFERENCED HEREIN OR AS TO THE ACCURACY OR COMPLETENESS OF THE INFORMATION CONTAINED HEREIN, AND SAME IS SUBMITTED SUBJECT TO ERRORS, OMISSIONS, CHANGE OF PRICE, RENTAL OR OTHER CONDITIONS, WITHDRAWAL WITHOUT NOTICE, AND TO ANY SPECIAL LISTING CONDITIONS IMPOSED BY THE PROPERTY OWNER(S). ANY PROJECTIONS, OPINIONS OR ESTIMATES ARE SUBJECT TO UNCERTAINTY AND DO NOT SIGNIFY CURRENT OR FUTURE PROPERTY PERFORMANCE.

LAND FOR SALE - ±3.89 ACRES

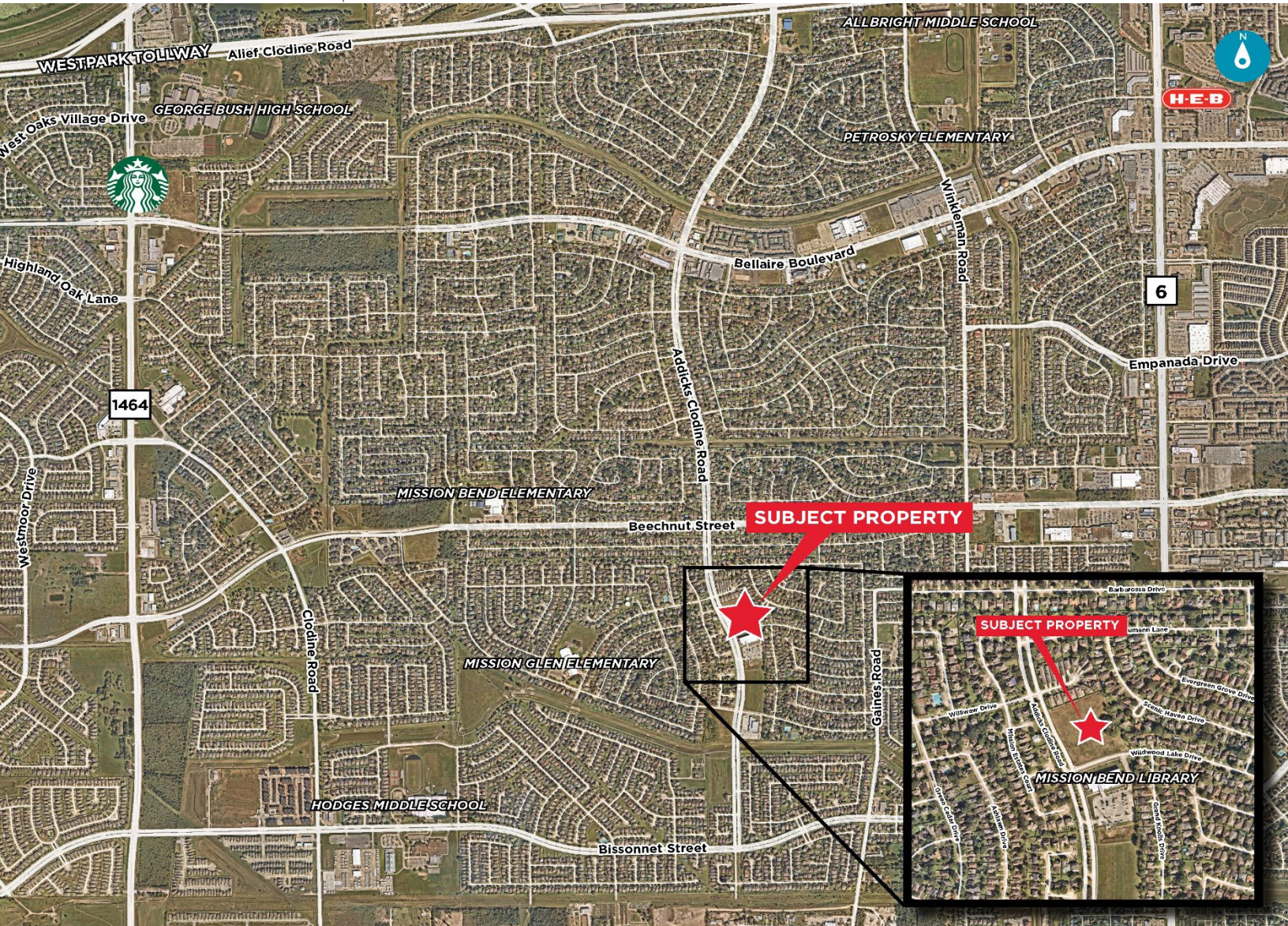
ADDICKS CLODINE RD AND WILDWOOD LAKE DR

HOUSTON, TX 77082



LOCATION HIGHLIGHTS

- Frontages:
 - ±431' frontage on Addicks Clodine Rd.
 - ±365' frontage on Wildwood Lake Dr.
- Located in Fort Bend Independent School District
- Adjacent to Mission Bend Library
- Located outside of floodplain
- Approximately 6.5 miles south of George Bush Park
- Approximately 8.4 miles south of Energy Corridor
- Approximately 36.5 miles from Bush Intercontinental Airport
- Approximately 33.8 miles from William P. Hobby Airport



FOR MORE INFORMATION CONTACT:

MEREDITH T. CULLEN

Phone: +1 (713) 331-1809

Email: meredith.cullen@cushwake.com

DAVID L. COOK

Phone: +1 (713) 963-2888

Email: david.cook@cushwake.com

©2021 Cushman & Wakefield. All rights reserved. The information contained in this communication is strictly confidential. This information has been obtained from sources believed to be reliable but has not been verified. NO WARRANTY OR REPRESENTATION, EXPRESS OR IMPLIED, IS MADE AS TO THE CONDITION OF THE PROPERTY (OR PROPERTIES) REFERENCED HEREIN OR AS TO THE ACCURACY OR COMPLETENESS OF THE INFORMATION CONTAINED HEREIN, AND SAME IS SUBMITTED SUBJECT TO ERRORS, OMISSIONS, CHANGE OF PRICE, RENTAL OR OTHER CONDITIONS, WITHDRAWAL WITHOUT NOTICE, AND TO ANY SPECIAL LISTING CONDITIONS IMPOSED BY THE PROPERTY OWNER(S). ANY PROJECTIONS, OPINIONS OR ESTIMATES ARE SUBJECT TO UNCERTAINTY AND DO NOT SIGNIFY CURRENT OR FUTURE PROPERTY PERFORMANCE.