

For Lease

# Boise Towne Square

104 N Milwaukee St, Boise, ID 83704



## AVAILABLE PROPERTY

<b>Location</b>	Located near the corner of Milwaukee and Franklin on the pad of Boise Towne Square Regional Mall
<b>Building Size</b>	29,035 SF
<b>Availability</b>	2,100 - 6,100 SF
<b>Lease Type</b>	NNN
<b>Lease Rate</b>	Contact Agent
<b>Lot Size</b>	1.96 Acres
<b>TI Allowance</b>	Negotiable

## SITE INFORMATION

- High Visibility on both Franklin & Milwaukee
- Adjacent to Boise Towne Square Mall, serving nearly 500,000 area residents
- Ample Parking
- Traffic Counts: Franklin Rd 23,375 VPD  
Milwaukee 23,865 VPD

DEMOGRAPHICS	1 Mile	3 Miles	5 Miles
Total Households	4,555	36,760	88,370
Total Population	11,018	90,159	216,122
Average HH Income	\$48,033	\$54,059	\$59,174



5531 N. Glenwood St.,  
Boise, ID 83714  
208-229-2020

**Mike Erkmann, CCIM**

mike@naiselect.com  
C: 208-629-6003  
D: 208-229-6015

**Ben Kneadler CCIM**

ben@naiselect.com  
C: 208-353-2242  
D: 208-229-6002

For Lease

# Retail Property

2,100 - 6,100 SF | Contact Agent



**NAI**Select

5531 N. Glenwood St.,  
Boise, ID 83714  
208-229-2020

**Mike Erkmann, CCIM**

mike@naiselect.com  
C: 208-629-6003  
D: 208-229-6015

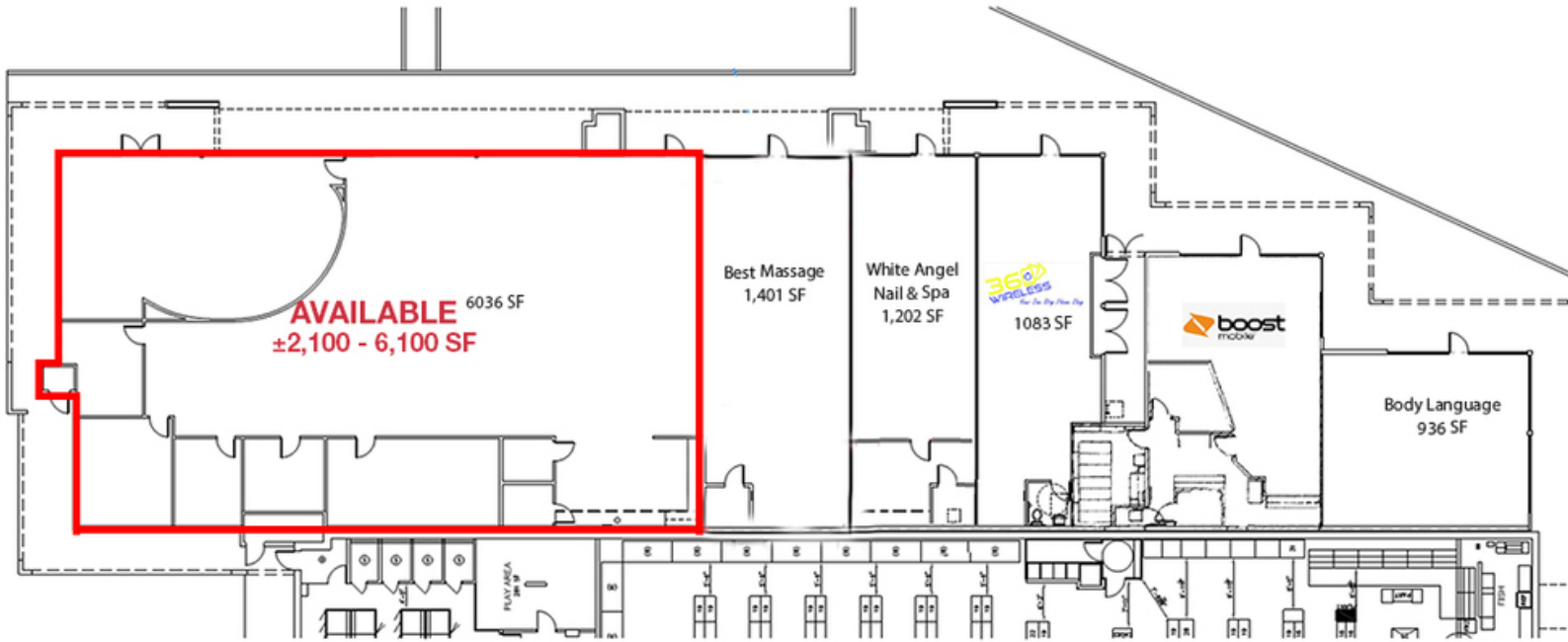
**Ben Kneadler CCIM**

ben@naiselect.com  
C: 208-353-2242  
D: 208-229-6002

For Lease

# Retail Property

2,100 - 6,100 SF | Contact Agent



**NAISelect**

5531 N. Glenwood St.,  
Boise, ID 83714  
208-229-2020

**Mike Erkmann, CCIM**

mike@naiselect.com  
C: 208-629-6003  
D: 208-229-6015

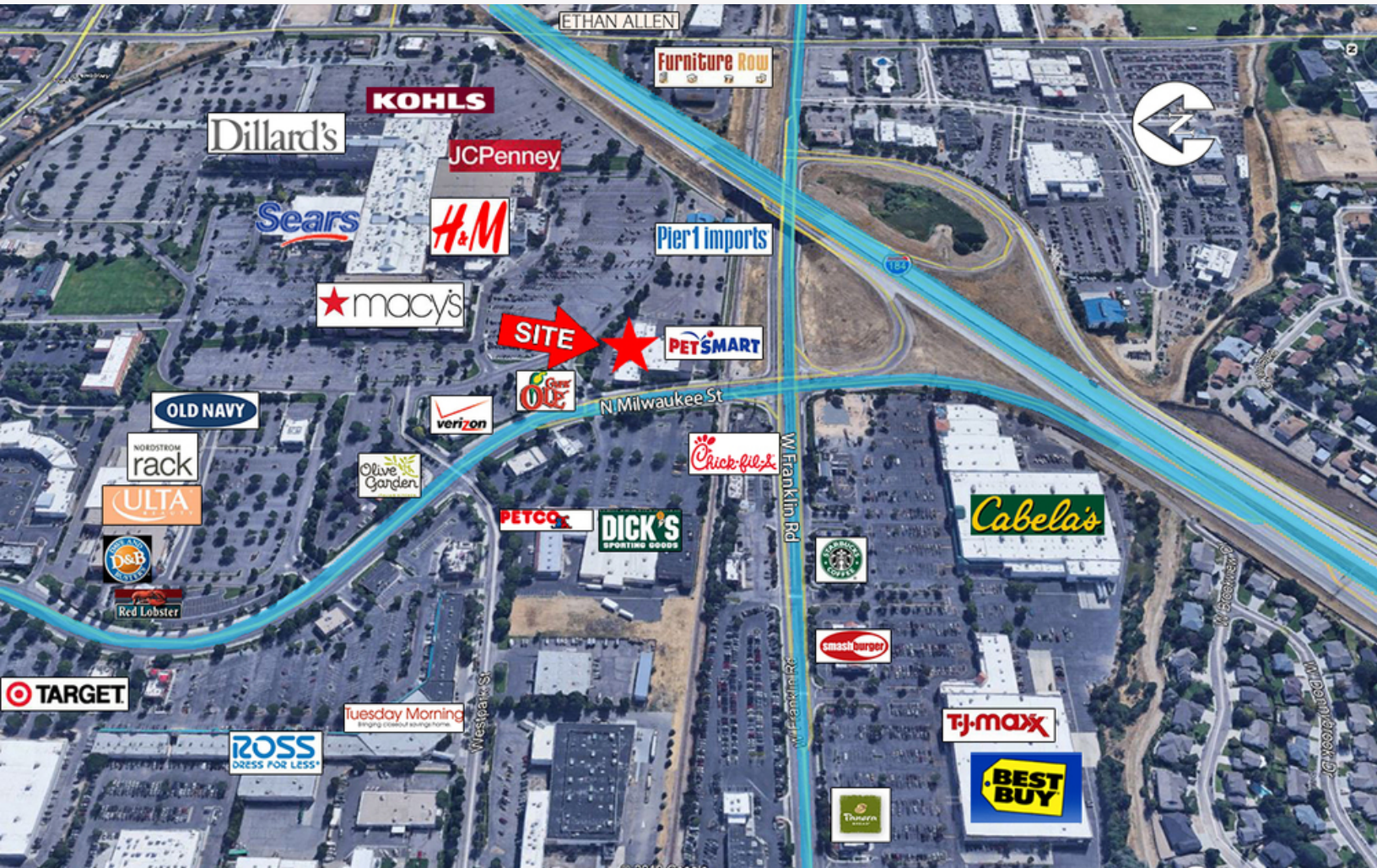
**Ben Kneadler CCIM**

ben@naiselect.com  
C: 208-353-2242  
D: 208-229-6002

For Lease

# Retail Property

2,100 - 6,100 SF | Contact Agent



**NAI**Select

5531 N. Glenwood St.,  
Boise, ID 83714  
208-229-2020

**Mike Erkmann, CCIM**

mike@naiselect.com  
C: 208-629-6003  
D: 208-229-6015

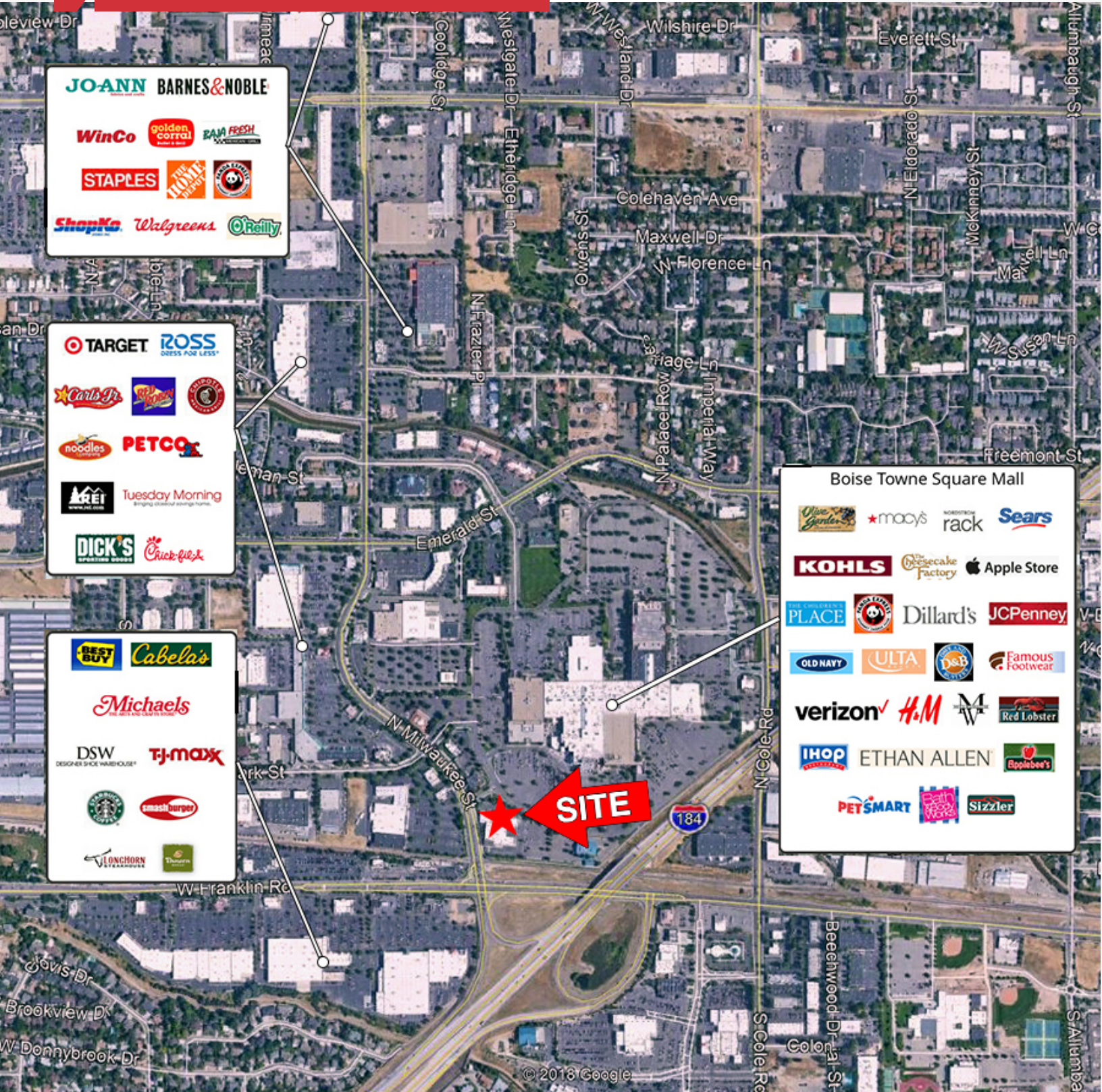
**Ben Kneadler CCIM**

ben@naiselect.com  
C: 208-353-2242  
D: 208-229-6002

For Lease

# Retail Property

2,100 - 6,100 SF | Contact Agent



**NAISelect**

5531 N. Glenwood St.,  
Boise, ID 83714  
208-229-2020

**Mike Erkman, CCIM**

mike@naiselect.com  
C: 208-629-6003  
D: 208-229-6015

**Ben Kneadler CCIM**

ben@naiselect.com  
C: 208-353-2242  
D: 208-229-6002

For Lease

# Retail Property

2,100 - 6,100 SF | Contact Agent



## NAISelect

5531 N. Glenwood St.,  
Boise, ID 83714  
208-229-2020

### Mike Erkmann, CCIM

mike@naiselect.com  
C: 208-629-6003  
D: 208-229-6015

### Ben Kneadler CCIM

ben@naiselect.com  
C: 208-353-2242  
D: 208-229-6002