

Lowe's Outparcel Available

1892 Georgia Highway 138 SE | Conyers, Georgia 30013

Ackerman Retail



NOW AVAILABLE
FOR SALE OR LEASE
3.43 ± Acres

AREA RETAILERS

LOWE'S

Let's Build Something Together™

Publix

TARGET

ROSS
DRESS FOR LESS



PROPERTY HIGHLIGHTS

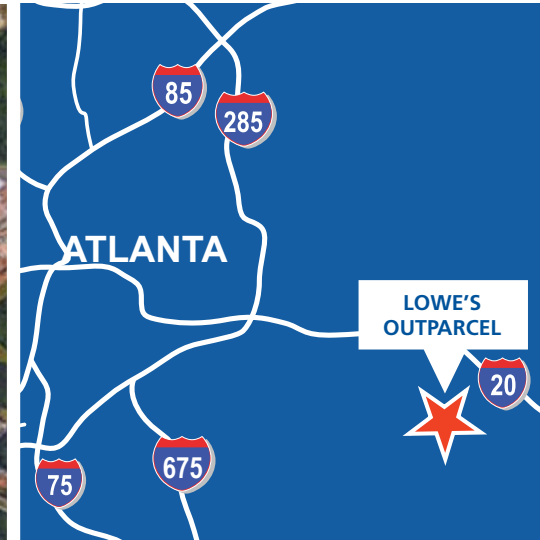
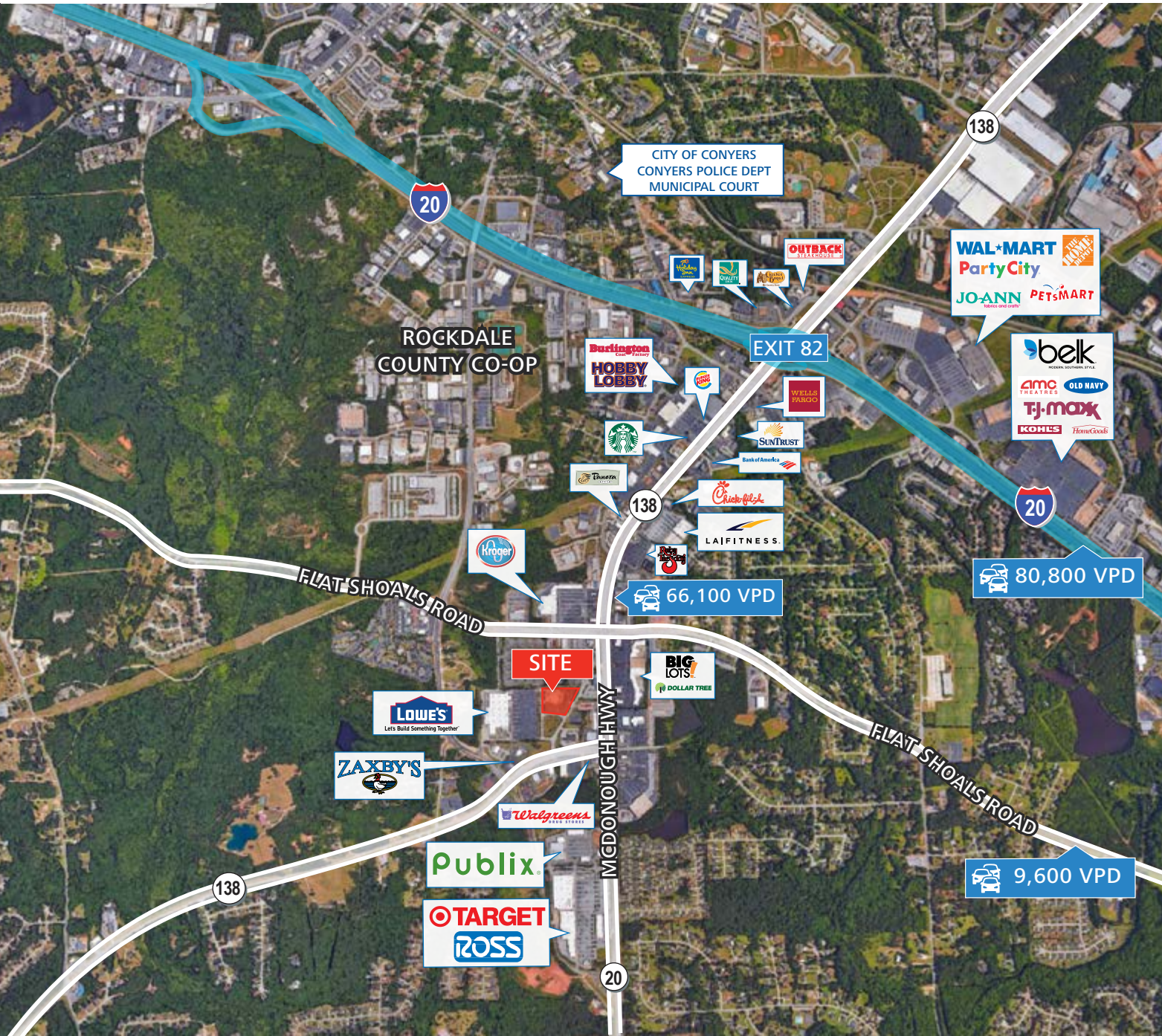
- 3.43 ± acres available
- Lowe's outparcel located off of Highway 138 SE
- Zone C-2
- Three existing curb cuts
- Detention pond, utilities, and water at site
- Multiple access points

COURTNEY BRUMBELOW
770.913.3905
cbrumbelow@ackermanco.net
www.ackermanretail.com

Lowe's Outparcel Available

1892 Georgia Highway 138 SE | Conyers, Georgia 30013

Ackerman Retail



LEASING CONTACT:

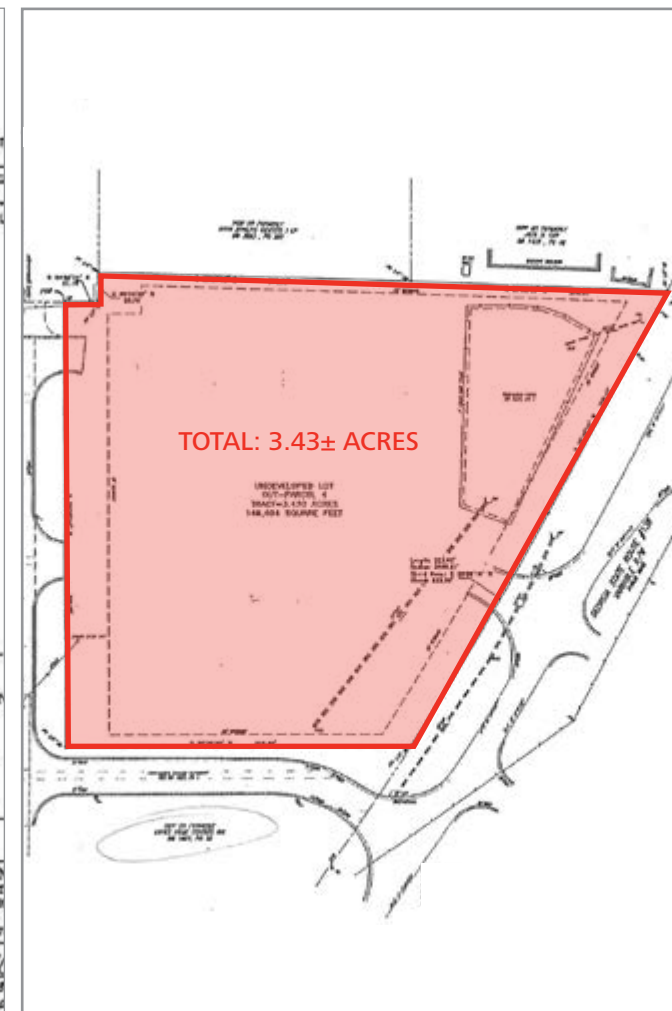
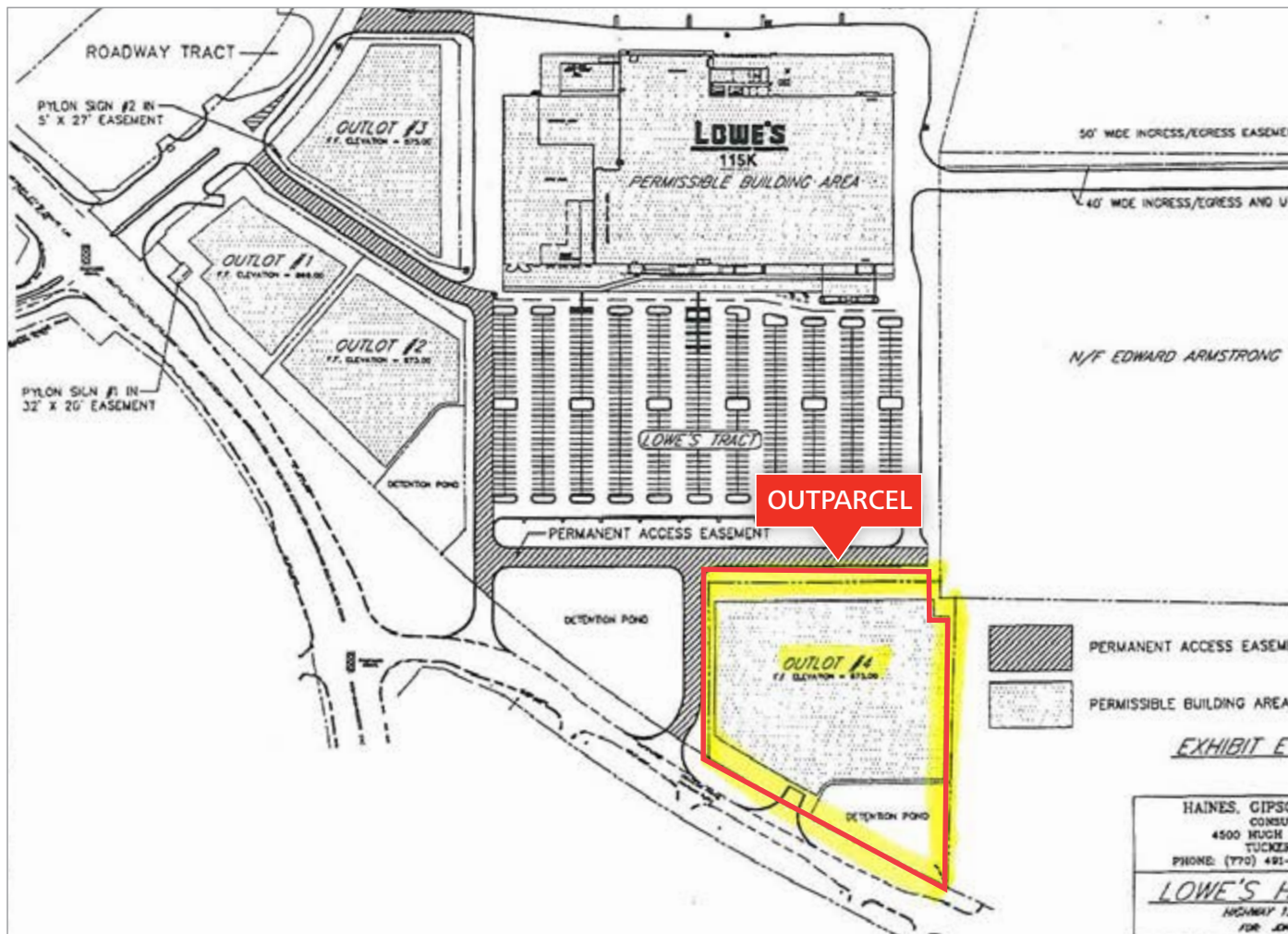
COURTNEY BRUMBELOW
770.913.3905
cbrumbelow@ackermanco.net
www.ackermanretail.com

©2017 Ackerman & Co. All rights reserved. While we have no reason to doubt the accuracy of the information provided from sources we deem reliable, we cannot guarantee it and therefore assume no liability for errors, omissions or changes to this content.

Lowe's Outparcel Available

1892 Georgia Highway 138 SE | Conyers, Georgia 30013

Ackerman Retail



AREA DEMOGRAPHICS (2016):



POPULATION

| | |
|--------|---------|
| 3-MILE | 35,994 |
| 5-MILE | 83,669 |
| 7-MILE | 131,640 |



HOUSEHOLDS

| | |
|--------|--------|
| 3-MILE | 13,098 |
| 5-MILE | 29,499 |
| 7-MILE | 46,871 |



AVG HH INCOME

| | |
|--------|----------|
| 3-MILE | \$66,840 |
| 5-MILE | \$65,850 |
| 7-MILE | \$65,461 |

LEASING CONTACT:

COURTNEY BRUMBELOW

770.913.3905

cbrumbelow@ackermanco.net

www.ackermanretail.com