

LEGACY OF APPLE VALLEY OUTLOT

153rd Street W. & Galaxie Avenue | Apple Valley, MN 55124



SALE/LEASE/BTS OPPORTUNITY

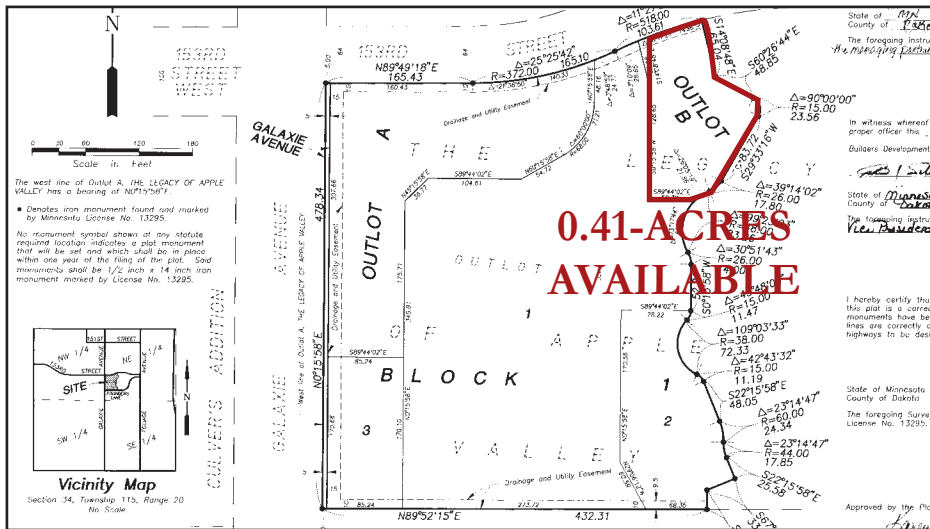
HJ Development is marketing a 0.41-acre land parcel for Sale/Lease/BTS. Located at the intersection of 153rd Street W. & Galaxie Avenue, the property is adjacent to Shops on Galaxie, a retail/office complex. This is an outstanding location for a variety of retail, office and medical office users. For more information please contact us directly.

DEMOGRAPHICS (Data Source - ESRI)

	1-Mile	3-Miles	5-Miles
Population:	12,857	85,774	186,208
Daytime Population:	11,326	21,842	57,607
Households:	5,407	31,059	69,229
Average HH Income:	\$78,083	\$111,911	\$109,376

CURRENTLY AVAILABLE

- 0.41-Acres Available for Sale/Lease/BTS
- Sale Price: \$20.00 psf
- Lease Rates: Negotiable
- Significant Residential/Multi-Family Construction is Underway in the Trade Area
- Area Retailers Include Super Target, Best Buy, OfficeDepot/OfficeMax, Cub Foods, LA Fitness, Culvers, Dollar Tree, Goodwill, Vivo Kitchen & More...



CONTACT INFORMATION

- ✉ **Chris Moe, CCIM:**
cmoe@hjdevelopment.com
- ✉ **Brian Merz:**
bmerz@hjdevelopment.com
- ☎ 952-476-9400
- 🌐 www.hjdevelopment.com

SALE/LEASE/BUILD-TO-SUIT OPPORTUNITY | APPLE VALLEY

