

RETAIL SPACE ADJACENT TO KOHL'S

304 N MAIN ST, LACEY TOWNSHIP, NJ 08731 | #1235

±24,300 SF AVAILABLE FOR LEASE

AREA RETAILERS



property highlights.

- Located off Route 9 Corridor
- Strongest center located in the middle of trade area
- Traffic signalized access to the center for Northbound vehicles and easy turn in access for Southbound
- Desirable ±24,300 SF junior anchor availability with 98'4" of frontage

stats.

2018 DEMOGRAPHICS*	3 MILES	5 MILES	7 MILES
EST. POPULATION	31,544	50,725	89,283
EST. HOUSEHOLDS	11,596	18,584	33,126
EST. AVG. HH INCOME	\$99,434	\$96,564	\$95,500

MAIN STREET (ROUTE 9) TRAFFIC COUNT: 18,000 VPD *ESRI 2018



MetroCommercial.com | PHILADELPHIA, PA | PLYMOUTH MEETING, PA | MOUNT LAUREL, NJ | NAPLES, FL

CHAINLINKS
RETAIL ADVISORS

Stan Johnson Co.
THE NET LEASE AUTHORITY®

get in touch.

JOE DOUGHERTY

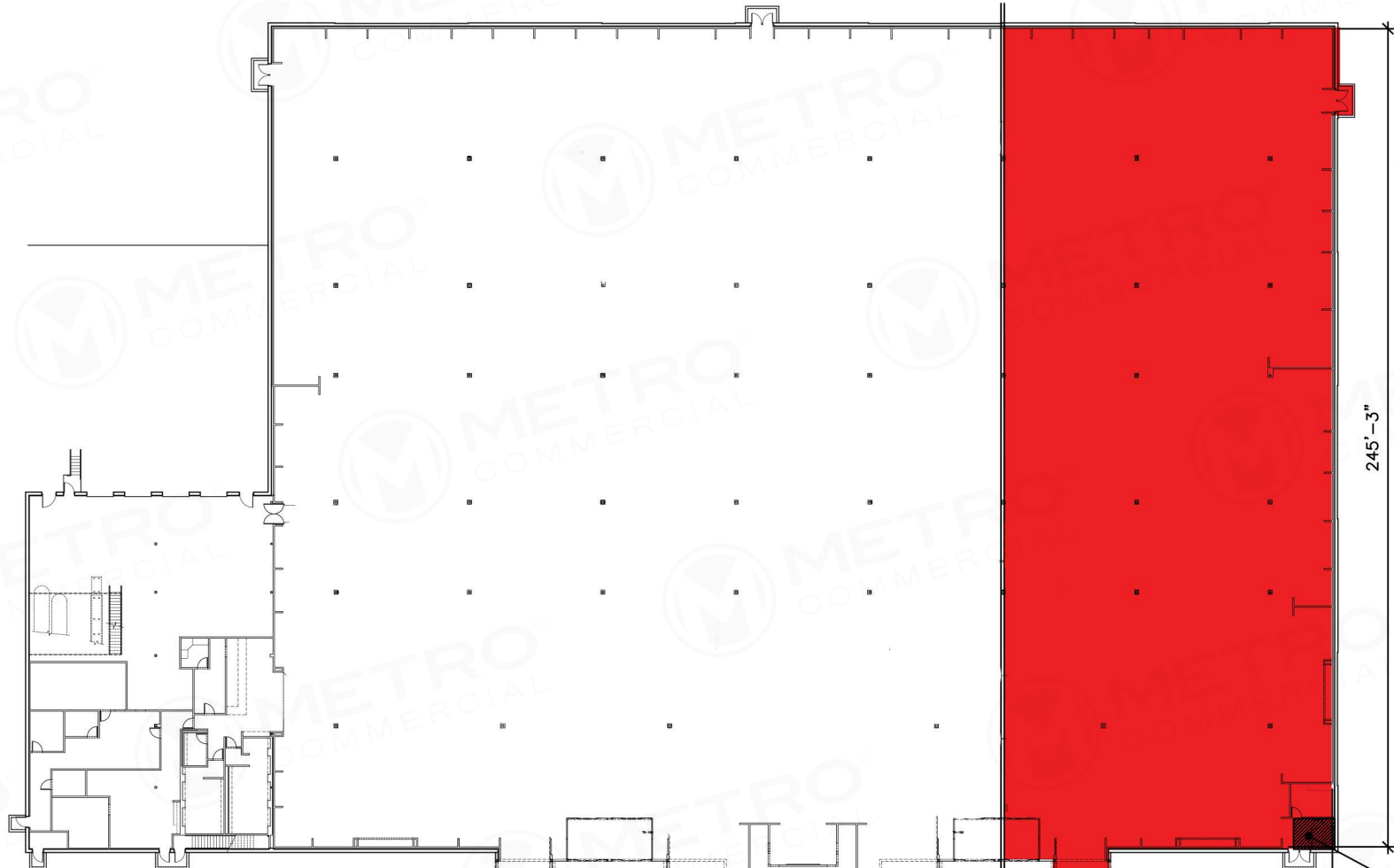
office 610.825.5222
direct 610.260.2670

jdougherty@metrocommercial.com

VALERIE PETTINE

office 610.825.5222
direct 610.260.2661

vpettine@metrocommercial.com



GROSS GROUND:
APPROX. 63,700SF

TOTAL BUILDING REMAINING:
APPROX. 71,100SF

TOTAL SELLING:
53,800SF

GROSS GROUND:
APPROX. 25,100SF

INSIDE WALL:
APPROX. 24,300SF

POTENTIAL
DEMISING LINE

KOHL'S TO RETAIN AND
HAVE ACCESS TO EXISTING
ELECTRICAL PANELS

The information and images contained herein are from sources deemed reliable. However, Metro Commercial Real Estate, Inc. makes no representation whatsoever as to their accuracy or authenticity. Images shown may be modified for illustrative purposes. Images may be out-of-date and not current. 3.11.19

RETAIL SPACE ADJACENT TO KOHL'S | #1235
304 N MAIN ST, LACEY TOWNSHIP, NJ

 **Stan Johnson Co.**
THE NET LEASE AUTHORITY®

CHAINLINKS
RETAIL ADVISORS

 **METRO**
COMMERCIAL
REAL ESTATE, INC.



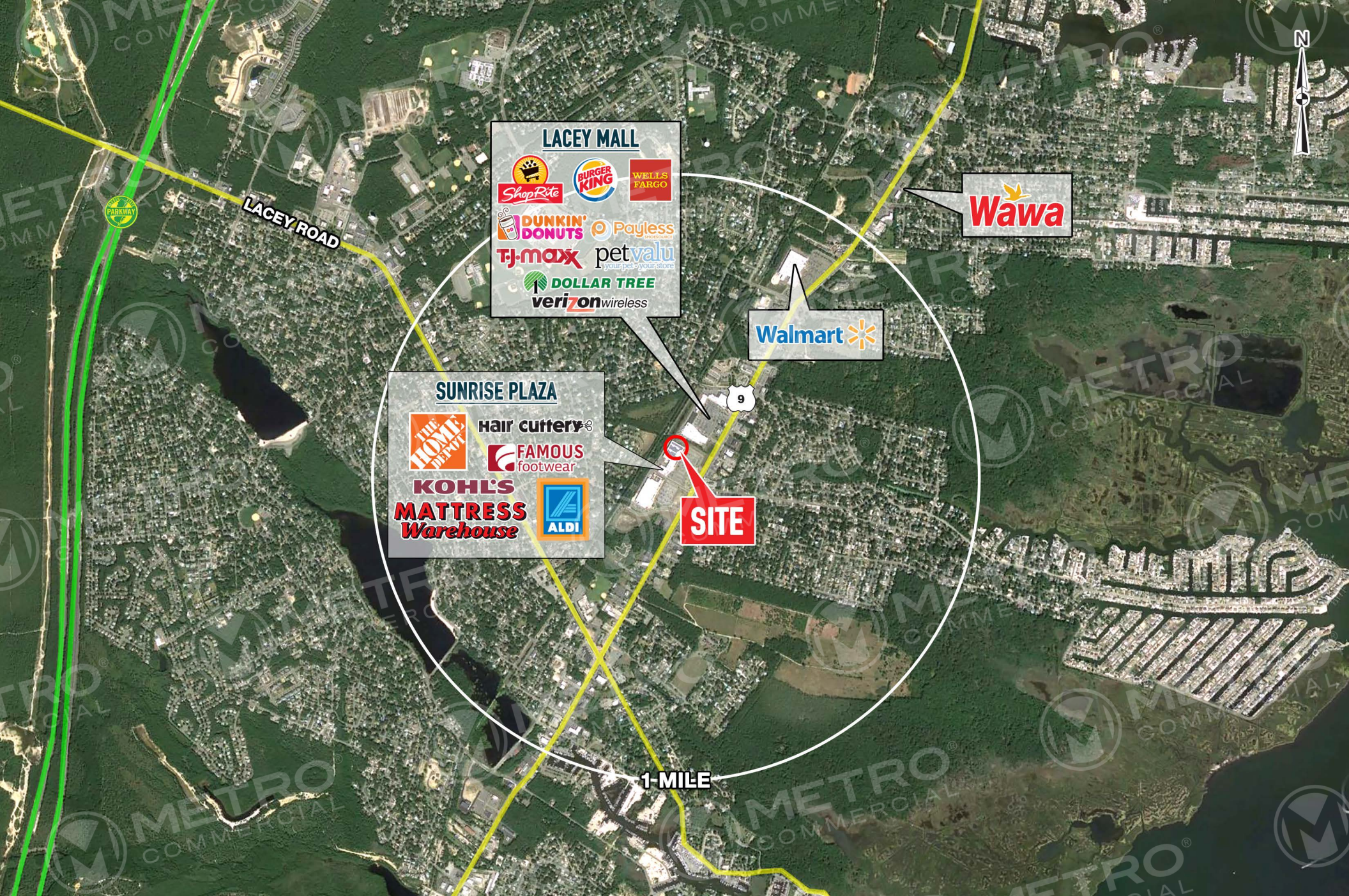
The information and images contained herein are from sources deemed reliable. However, Metro Commercial Real Estate, Inc. makes no representation whatsoever as to their accuracy or authenticity. Images shown may be modified for illustrative purposes. Images may be out-of-date and not current. 3.11.19

RETAIL SPACE ADJACENT TO KOHL'S | #1235
304 N MAIN ST, LACEY TOWNSHIP, NJ

 **Stan Johnson Co.**
THE NET LEASE AUTHORITY®

CHAINLINKS
RETAIL ADVISORS

 **METRO**
COMMERCIAL
REAL ESTATE, INC.



LACEY MALL

ShopRite | BURGER KING | WELLS FARGO

DUNKIN' DONUTS | Payless

TJ-MAXX | petvalu

DOLLAR TREE | verizon wireless

SUNRISE PLAZA

THE HOME DEPOT | hair cuttery

FAMOUS footwear

KOHL'S | ALDI

MATTRESS Warehouse

Walmart

Wawa

SITE

1-MILE

The information and images contained herein are from sources deemed reliable. However, Metro Commercial Real Estate, Inc. makes no representation whatsoever as to their accuracy or authenticity. Images shown may be modified for illustrative purposes. Images may be out-of-date and not current. 3.11.19

RETAIL SPACE ADJACENT TO KOHL'S | #1235
304 N MAIN ST, LACEY TOWNSHIP, NJ

 **Stan Johnson Co.**
 THE NET LEASE AUTHORITY®

CHAINLINKS
 RETAIL ADVISORS

 **METRO**
 COMMERCIAL
 REAL ESTATE, INC.