



10801 N 24TH AVE, 2323-2329 W MESCAL ST, PHOENIX, AZ 85029

FOR LEASE

\$1.00/SF BROKER BONUS
\$1.00/SF TENANT MOVING ALLOWANCE

FOR MORE INFORMATION:

MIKE CIOSEK, SIOR
O. 602.513.5135
mciosek@kiddermathews.com

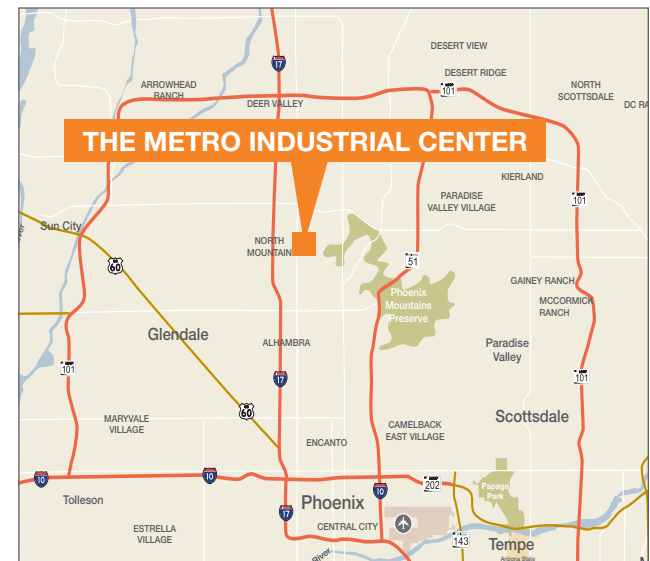
ERIC BELL, SIOR
O. 602.513.5151
ebell@kiddermathews.com

DYLAN SCOTT
O. 602.513.5104
dscott@kiddermathews.com

KIDDER MATHEWS
2555 E Camelback Rd, St 100
Phoenix, AZ
www.kiddermathews.com

PROPERTY FEATURES

- » 5 buildings totaling ±113,887 SF (office/industrial)
- » Office/warehouse suites from ±1,630 SF to ±7,650 SF ready for immediate occupancy
- » Various office build-outs
- » 16' clear height
- » 2.63:1,000 parking ratio
- » Lease Rate: \$0.85/SF
- » Located directly off of the I-17, in close proximity to Metro Center Mall
- » Under new ownership
- » Extensive exterior improvements planned and renovations underway



Updated: 3/27/2017

The information contained herein is believed to be accurate but is not warranted as to its accuracy and may change or be updated without notice. Seller or landlord makes no representation as to the environmental condition of the property and recommends purchaser's or tenant's independent investigation.



AVAILABILITIES

■ AVAILABLE ■ OCCUPIED

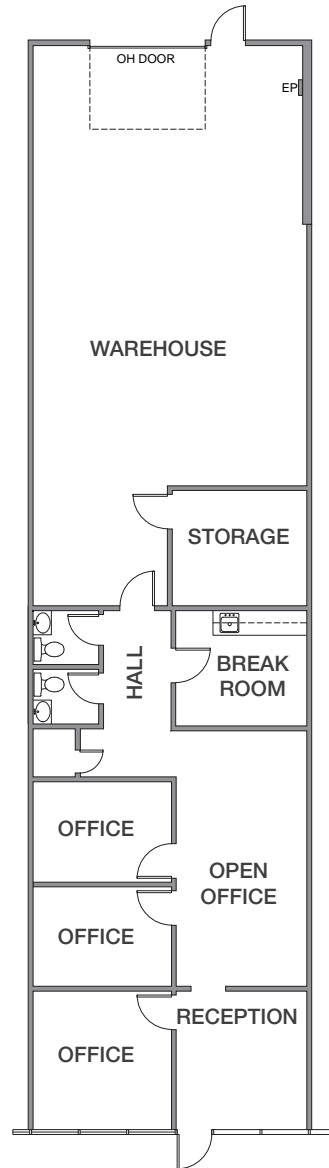


BUILDING	SUITE	TOTAL SF	OFFICE SF	PRICE /SF
10801 N 24th Avenue	109	±2,423		\$0.87
11001 N 24th Avenue	608	±2,500	±875	\$0.85
11001 N 24th Avenue	601	±2,500	±2,191	\$0.92
10801 N 24th Avenue	105-107	±6,500	±6,500	\$0.80

THE METRO INDUSTRIAL CENTER
10801 N 24TH AVE,
2323-2329 W MESCAL ST
PHOENIX, AZ 85029

10801 N 24TH AVENUE, SUITE 109

TOTAL | ±2,423 SF



FOR MORE INFORMATION:

Mike Ciosek, SIOR
o. 602.513.5135
mciosek@kiddermathews.com

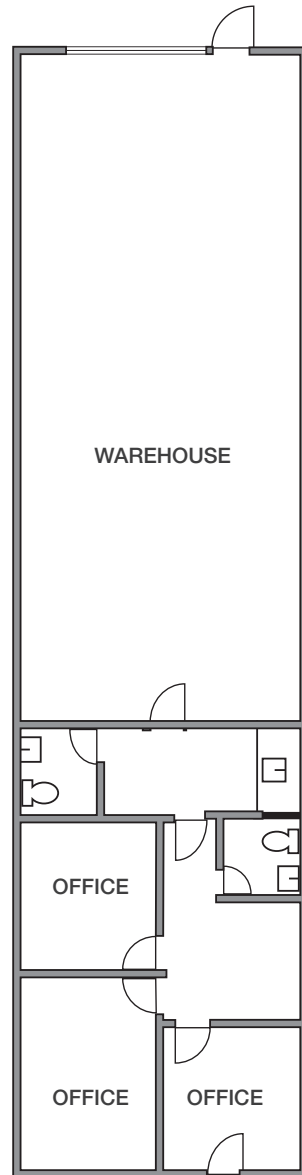
Eric Bell, SIOR
o. 602.513.5151
ebell@kiddermathews.com

Dylan Scott
o. 602.513.5104
dscott@kiddermathews.com

THE METRO INDUSTRIAL CENTER
10801 N 24TH AVE,
2323-2329 W MESCAL ST
PHOENIX, AZ 85029

11001 N 24TH AVE, SUITE 608

TOTAL | ±2,500 SF OFFICE | ±875 SF



FOR MORE INFORMATION:

Mike Ciosek, SIOR
o. 602.513.5135
mciosek@kiddermathews.com

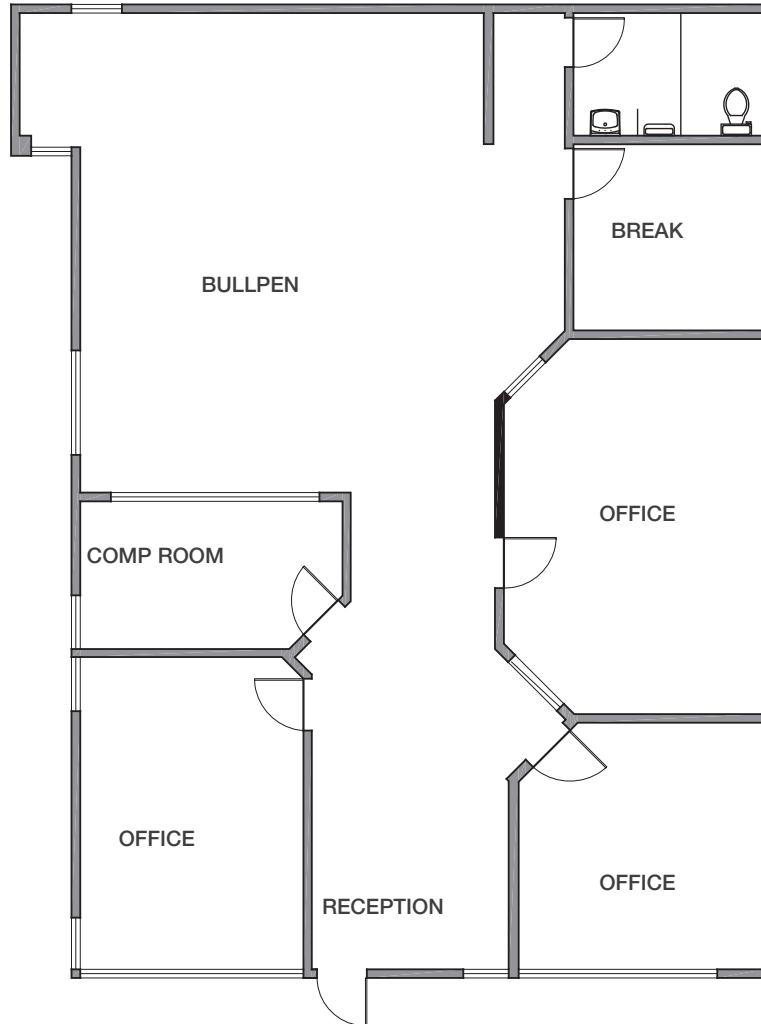
Eric Bell, SIOR
o. 602.513.5151
ebell@kiddermathews.com

Dylan Scott
o. 602.513.5104
dscott@kiddermathews.com

THE METRO INDUSTRIAL CENTER
10801 N 24TH AVE,
2323-2329 W MESCAL ST
PHOENIX, AZ 85029

11001 N 24TH AVE, SUITE 601

TOTAL | ±2,500 SF OFFICE | ±2,500 SF



FOR MORE INFORMATION:

Mike Ciosek, SIOR
o. 602.513.5135
mciosek@kiddermathews.com

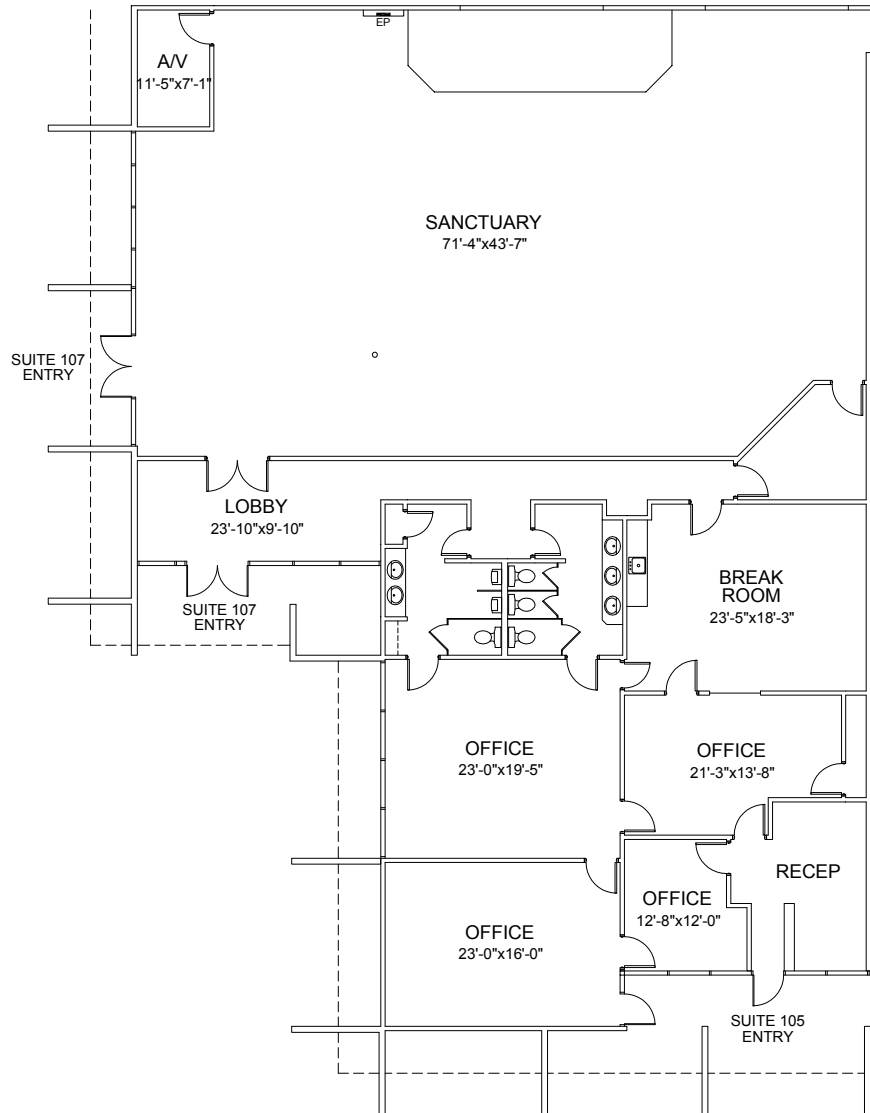
Eric Bell, SIOR
o. 602.513.5151
ebell@kiddermathews.com

Dylan Scott
o. 602.513.5104
dscott@kiddermathews.com

THE METRO INDUSTRIAL CENTER
10801 N 24TH AVE,
2323-2329 W MESCAL ST
PHOENIX, AZ 85029

10801 N 24TH AVE, SUITE 105-107

TOTAL | ±6,500 SF OFFICE | ±6,500 SF



FOR MORE INFORMATION:

Mike Ciosek, SIOR
o. 602.513.5135
mciosek@kiddermathews.com

Eric Bell, SIOR
o. 602.513.5151
ebell@kiddermathews.com

Dylan Scott
o. 602.513.5104
dscott@kiddermathews.com

THE METRO INDUSTRIAL CENTER
10801 N 24TH AVE,
2323-2329 W MESCAL ST
PHOENIX, AZ 85029



NEARBY AMENITIES

FOR MORE INFORMATION:

Mike Ciosek, SIOR
o. 602.513.5135
mciosek@kiddermathews.com

Eric Bell, SIOR
o. 602.513.5151
ebell@kiddermathews.com

Dylan Scott
o. 602.513.5104
dscott@kiddermathews.com

THE METRO INDUSTRIAL CENTER
10801 N 24TH AVE,
2323-2329 W MESCAL ST
PHOENIX, AZ 85029



FOR MORE INFORMATION:

Mike Ciosek, SIOR
o. 602.513.5135
mciosek@kiddermathews.com

Eric Bell, SIOR
o. 602.513.5151
ebell@kiddermathews.com

Dylan Scott
o. 602.513.5104
dscott@kiddermathews.com

THE METRO INDUSTRIAL CENTER
10801 N 24TH AVE,
2323-2329 W MESCAL ST
PHOENIX, AZ 85029

km Kidder
Mathews

