

FLEXIBLE & AFFORDABLE OFFICE SPACE FOR LEASE

RANCHO CORDOVA, CA

2934 GOLD PAN COURT



**For More
Information
Contact:**

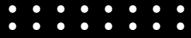
Gretchen Tobin
gretchentobin@proequityam.com
(916) 459-4378 | CA BRE #00937965

www.proequityam.com



© Copyright 2017. All rights reserved. Though the information above has been deemed to be from reliable sources, it is up to each interested party to conduct all proper due diligence, including but not limited to, any zoning or local governmental requirements, legal and tax consequence. ProEquity Real Estate Services cannot be responsible to any claim to the accuracy of any information contained herein. ProEquity Real Estate Services is a division of ProEquity Asset Management Corporation. CA BRE #01870526

PROPERTY HIGHLIGHTS



WE HAVE WHAT YOU NEED:

- Small professional offices
- Flexible building layout to accommodate changing tenant requirements
- Individually metered electric utilities
- Quality ownership with professional management by B&Z Properties
- Easy access to Highway 50 via Sunrise Boulevard and Zinfandel Drive
- Move-in ready suite for immediate occupancy
- Potential purchase opportunity

2934 GOLD PAN COURT

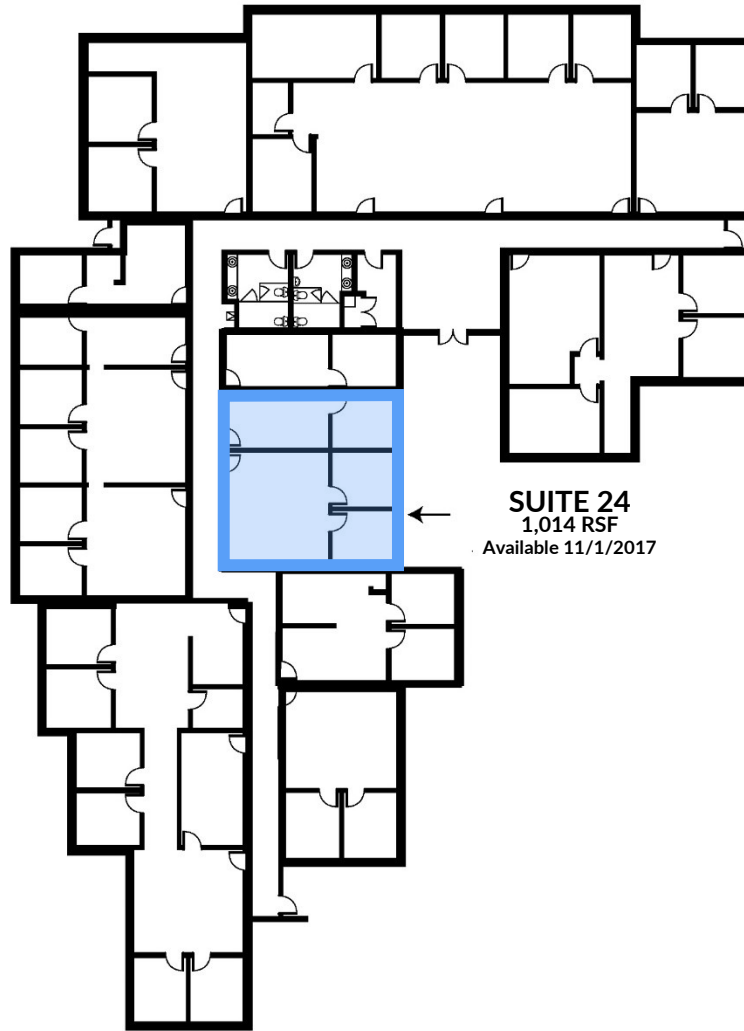


© Copyright 2017. All rights reserved. Though the information above has been deemed to be from reliable sources, it is up to each interested party to conduct all proper due diligence, including but not limited to, any zoning or local governmental requirements, legal and tax consequence. ProEquity Real Estate Services cannot be responsible to any claim to the accuracy of any information contained herein. ProEquity Real Estate Services is a division of ProEquity Asset Management Corporation. CA BRE #01870526

AVAILABLE SPACE

.....

2934 GOLD PAN COURT



SUITE 24
1,014 RSF
Available 11/1/2017

**For More
Information
Contact:**

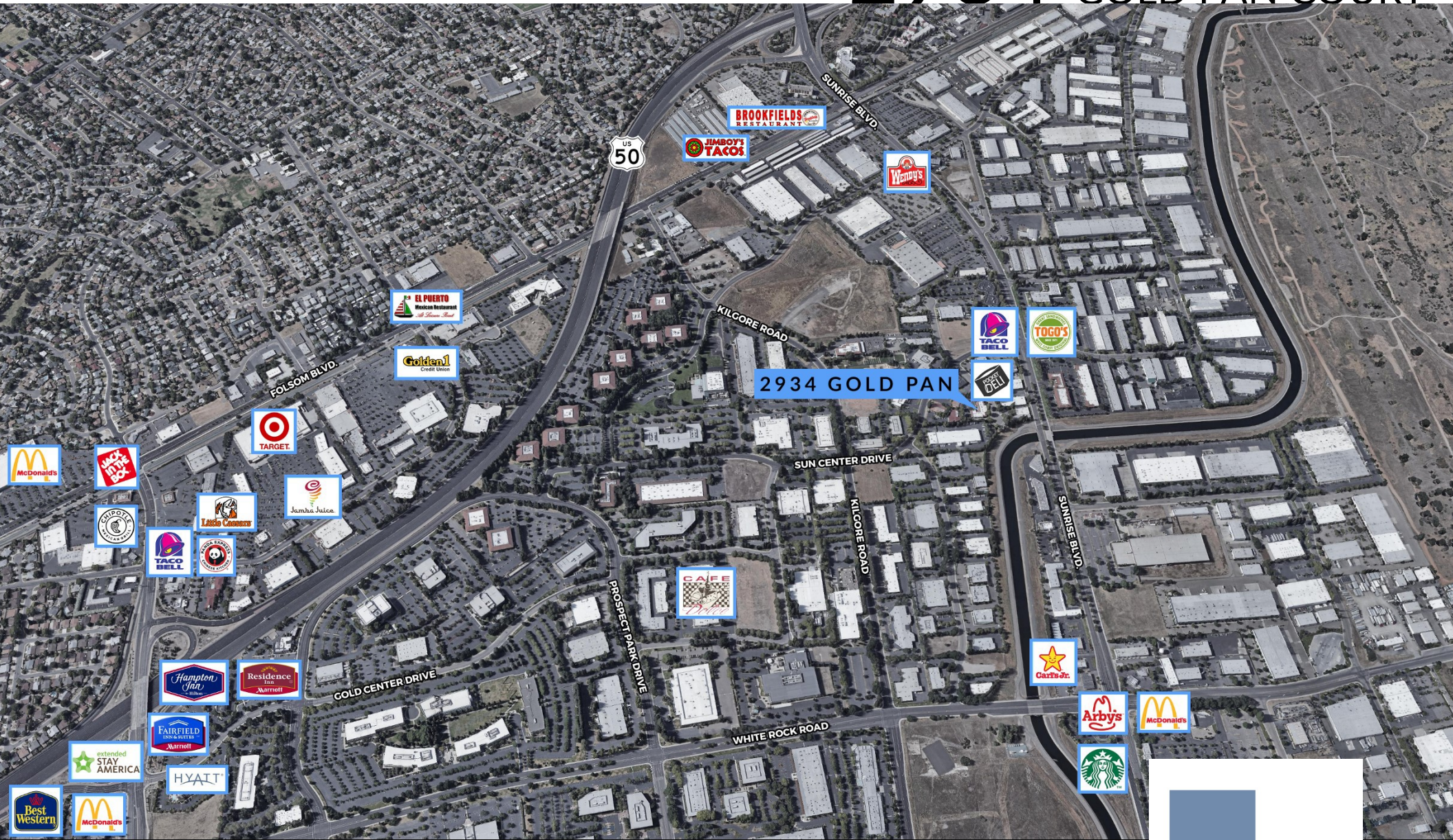
Gretchen Tobin
gretchentobin@proequityam.com
(916) 459-4378 | CA BRE #00937965

www.proequityam.com



FOR LEASE

2934 GOLD PAN COURT



For More
Information
Contact:

Gretchen Tobin
gretchentobin@proequityam.com
(916) 459-4378 | CA BRE #00937965

www.proequityam.com

