

OFFICE BUILDING FOR LEASE

*Freestanding Office Building
With Ample Private Parking Lot
8,777 Square Feet*

**302 Tarboro St. W
Downtown Wilson, NC**

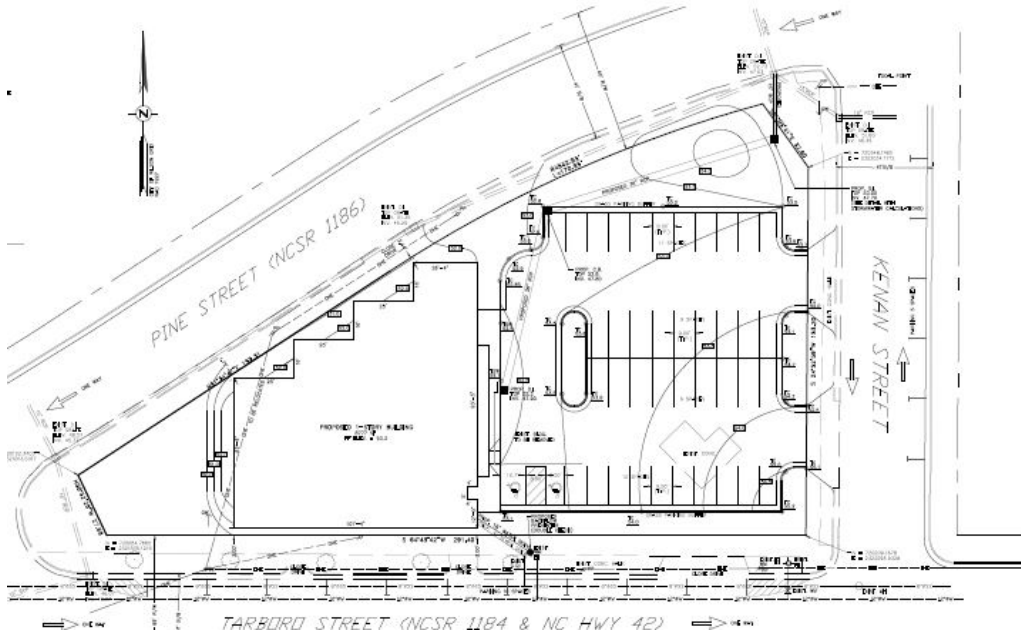
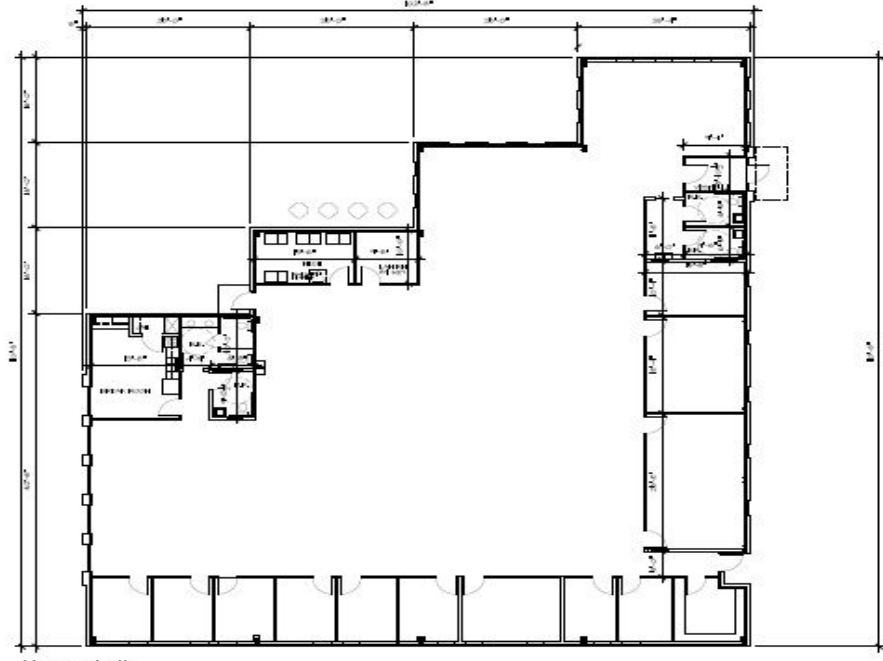


Post Office Box 99641 • Raleigh, North Carolina 27624-9641 • Tel (919) 846-1901
Fax (509) 691-9565 • E-Mail: leder@lederrealty.com



CCIM Institute
Commercial Real Estate's
Global Standard for Professional Achievement

- *One block from New Centro at Pine-Nash, New YMCA, Vollis Simpson Whirligig Park*



Call for Pricing

Stuart Leder, CCIM
919-846-1901

Post Office Box 99641 • Raleigh, North Carolina 27624-9641 • Tel (919) 846-1901

Fax (509) 691-9565 • E-Mail: leder@lederrealty.com



CCIM Institute
 Commercial Real Estate's
 Global Standard for Professional Achievement