



REECE

COMMERCIAL REAL ESTATE

a Berkshire Hathaway Affiliate

9700 E 63RD ST

RAYTOWN, MO 64133

BLUE YUU

9700

Eddie Crane

📞 816.304.6118

📠 913.266.5699

✉ eddie@reececommercial.com



9700 E 63RD ST, RAYTOWN, MO 64133

2,717

SQUARE FEET

RESTAURANT WITH
PARKING LOT



SALE PRICE

\$319,000

LOCATION INFORMATION

YEAR BUILT

1960

LOT SIZE

.40 ACRES

STREET ADDRESS

9700 E 63RD ST

CITY, STATE, ZIP

RAYTOWN, MO 64133

COUNTY

JACKSON

MARKET

KANSAS CITY

CROSS-STREETS

RAYTOWN TRAFFIC WAY

Eddie Crane

816.304.6118

913.266.5699

eddie@reececommercial.com



9700 E 63RD ST, RAYTOWN, MO 64133

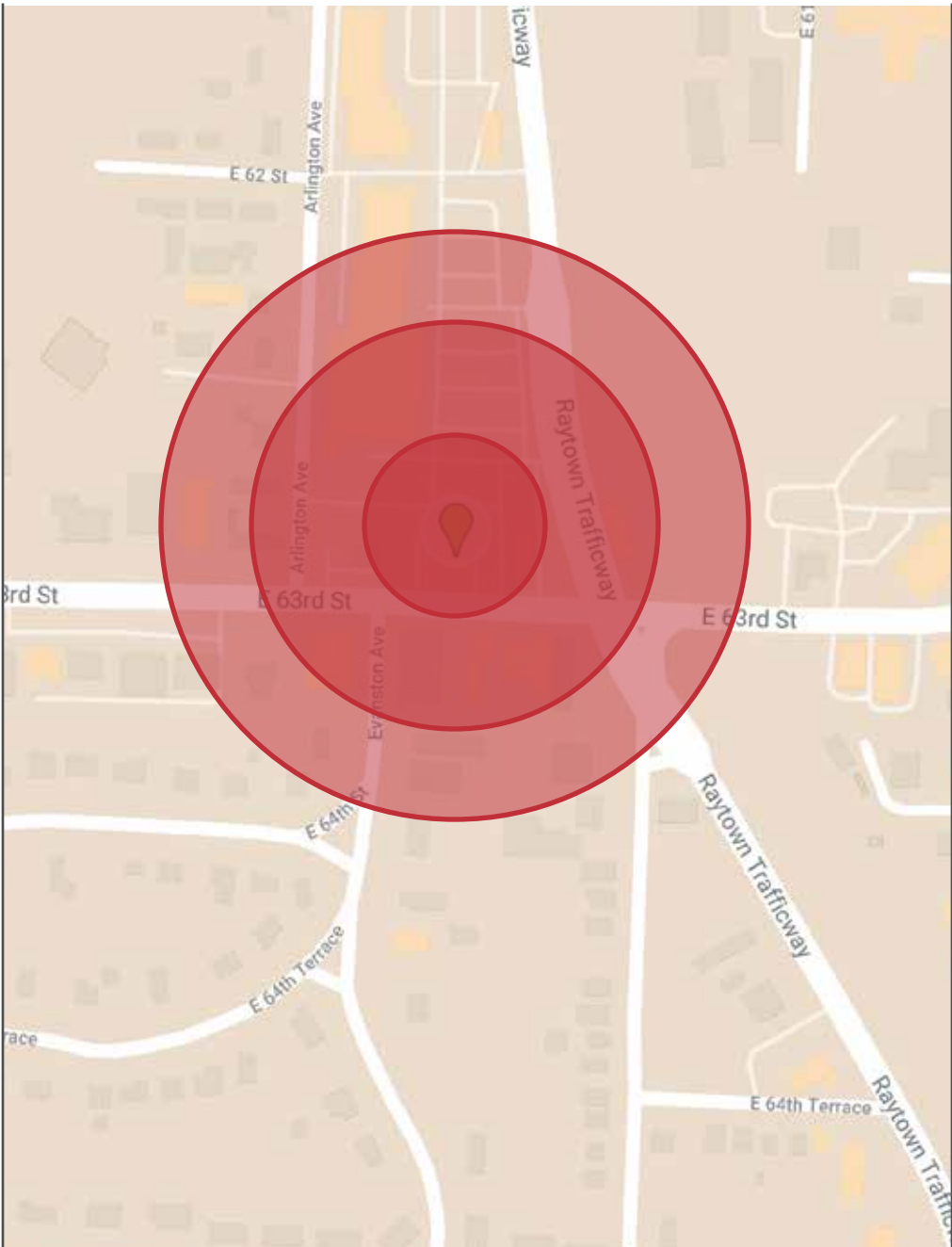
PROPERTY HIGHLIGHTS

- Full Service Restaurant/Bar
- Business Currently in operation
- Located in the heart of downtown Raytown
- Easy access to Kansas City metro





9700 E 63RD ST, RAYTOWN, MO 64133



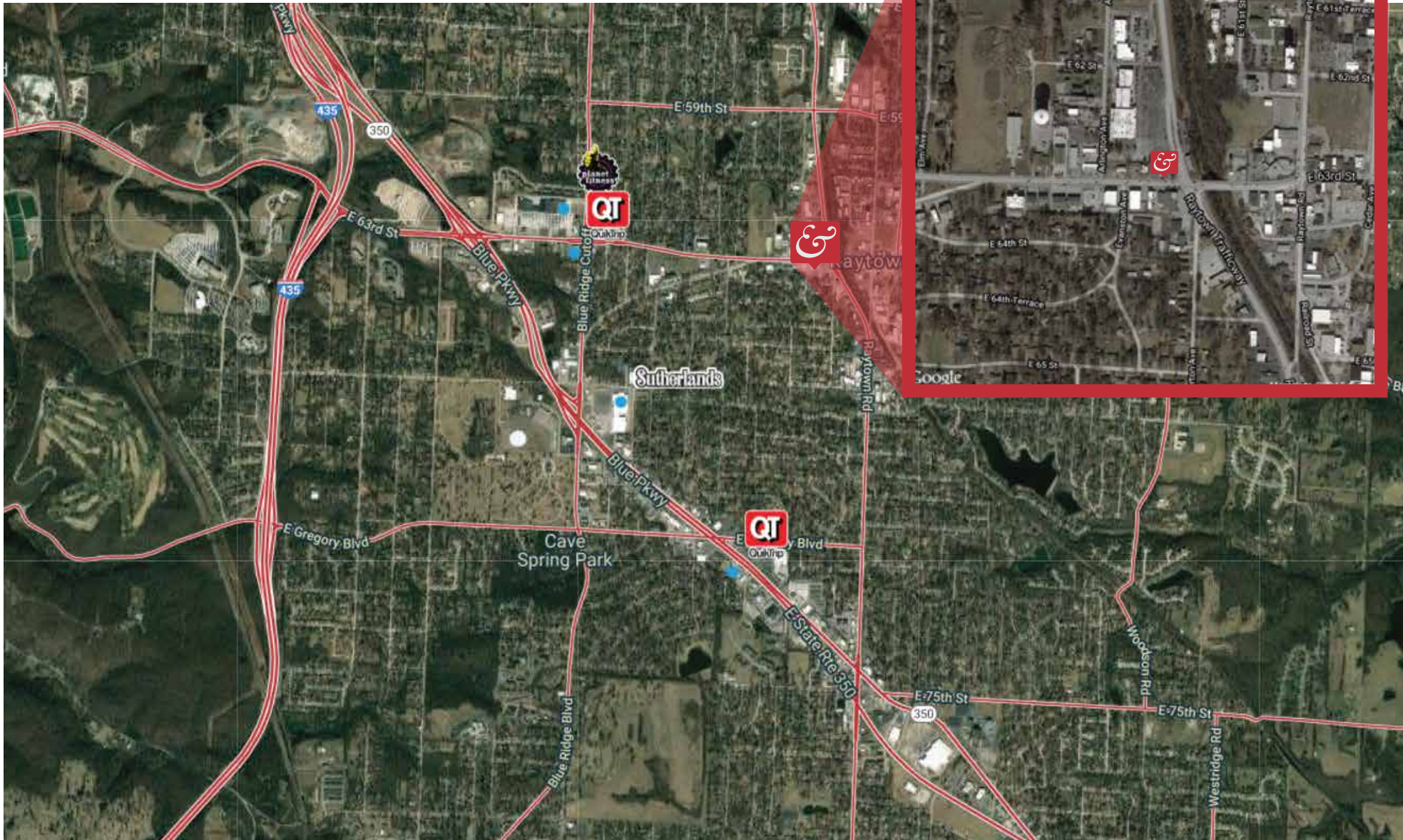
DEMOGRAPHICS

POPULATION	1 MILE	3 MILES	5 MILES
20' Population	8,974	53,533	127,755
25' Population	9,176	54,207	129,701
20' Average Age	40	40	40

HOUSEHOLDS & INCOME	1 MILE	3 MILES	5 MILES
20' Households	3,836	21,912	52,697
20' Est Income	\$47,915	\$52,357	\$49,171

9700 E 63RD ST, RAYTOWN, MO 64133

AERIAL



The Information Above Has Been Obtained From Sources Believed Reliable. While We Do Not Doubt Its Accuracy We Have Not Verified It And Make No Guarantee, Warranty Or Representation About It. It Is Your Responsibility To Independently Confirm Its Accuracy And Completeness. Any Projections, Opinions, Assumptions, Or Estimates Used Are For Example Only And Do Not Represent The Current Or Future Performance Of The Property. You And Your Advisors Should Conduct A Careful, Independent Investigation Of The Property To Determine To Your Satisfaction The Suitability Of The Property For Your Needs. © 2020