



# OFFICE SPACE FOR LEASE

## 1150 W NORTHWEST HIGHWAY MOUNT PROSPECT, IL



### BUILDING FEATURES:

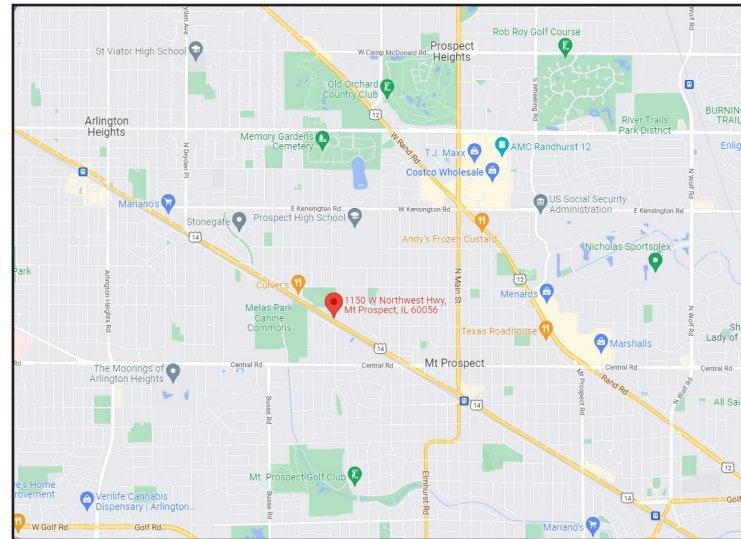
- 2,854 SF High Quality Office Space Available Now
- Located minutes from Mt Prospect & Arlington Hts Metra Train
- Close proximity to shopping and dining
- Single story office building with direct tenant access & private restrooms
- Comcast high-speed internet and cable available
- Covered Parking & surface parking available with elevator ADA compliant
- 24-hour tenant access & tenant controlled HVAC
- Ideal for Attorneys, Accountants, Insurance or other business professionals

- Built in 2002 with excellent curb appeal
- Tenant Signage on busy Northwest Hwy
- Furniture Available
- **Rental Rate: \$15-00-\$16.50 Modified Gross (Recent Rate Reduction!)**

### AVAILABLE SPACE:

SUITE	SIZE (SF)	Available
Suite B	2,854 SF	ASAP

**	Furniture Available	**
----	---------------------	----



### FOR MORE INFORMATION:

RANDY OLCZYK  
 Direct: 847.246.9611  
 randy@chicagolandcommercial.com

RAY OKIGAWA  
 Direct: 847.246.9632  
 ray@chicagolandcommercial.com



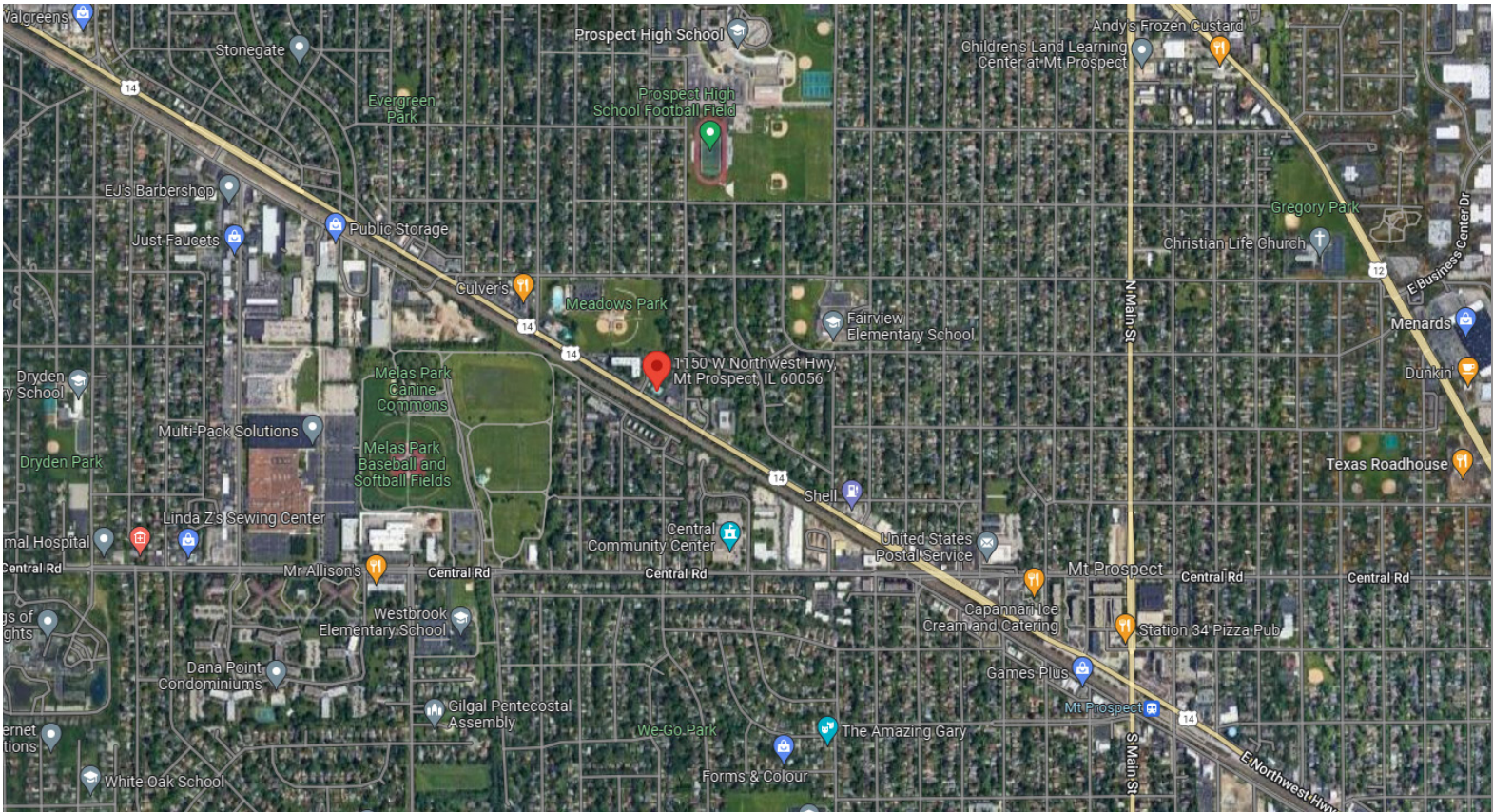
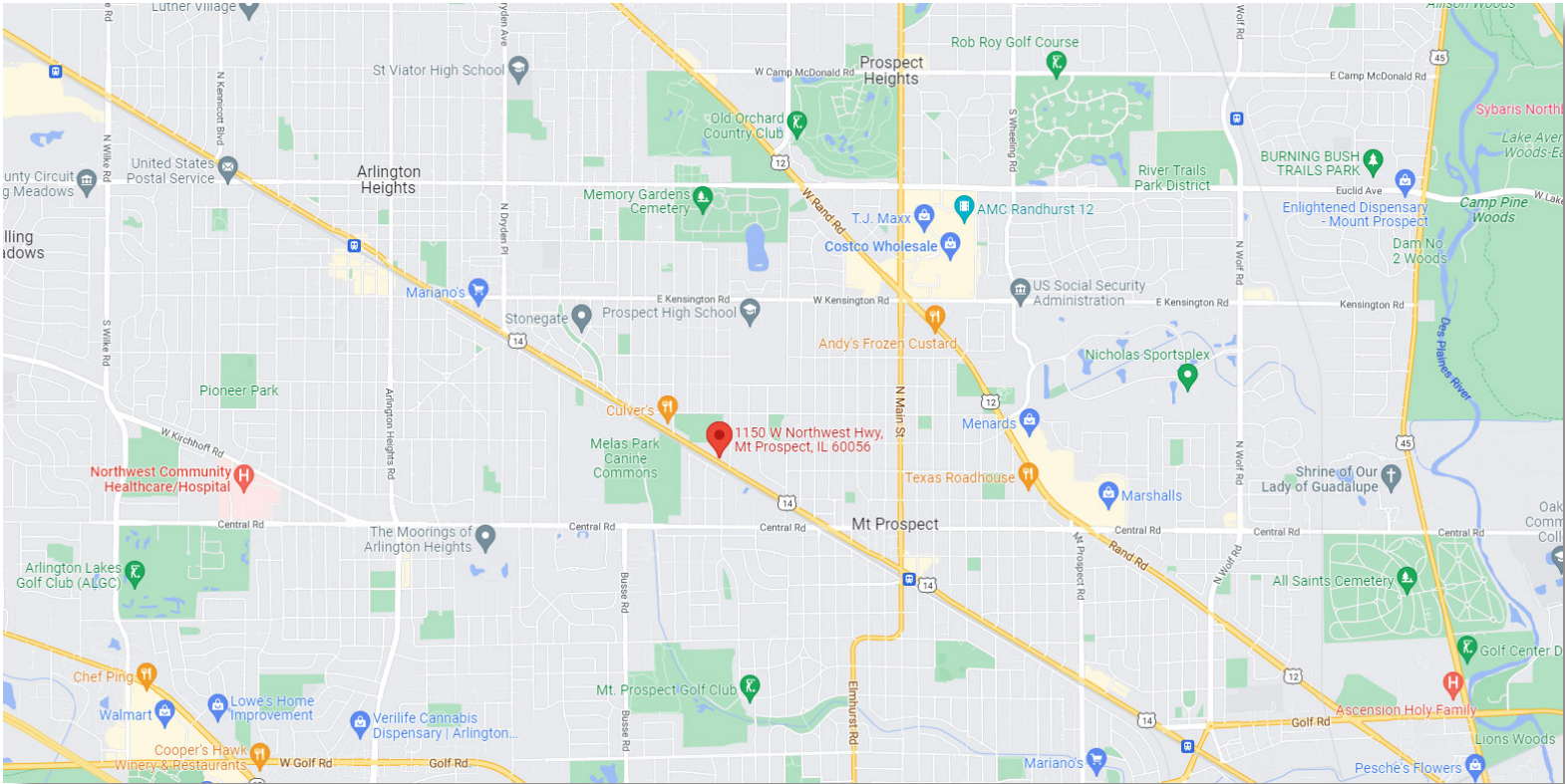
4811 Emerson Ave Suite 112, Palatine, IL



# OFFICE SPACE FOR LEASE

## 1150 W NORTHWEST HIGHWAY MOUNT PROSPECT, IL

### AREA MAPS





# OFFICE SPACE FOR LEASE

1150 W NORTHWEST HIGHWAY MOUNT PROSPECT, IL

## BUILDING PHOTOGRAPHS

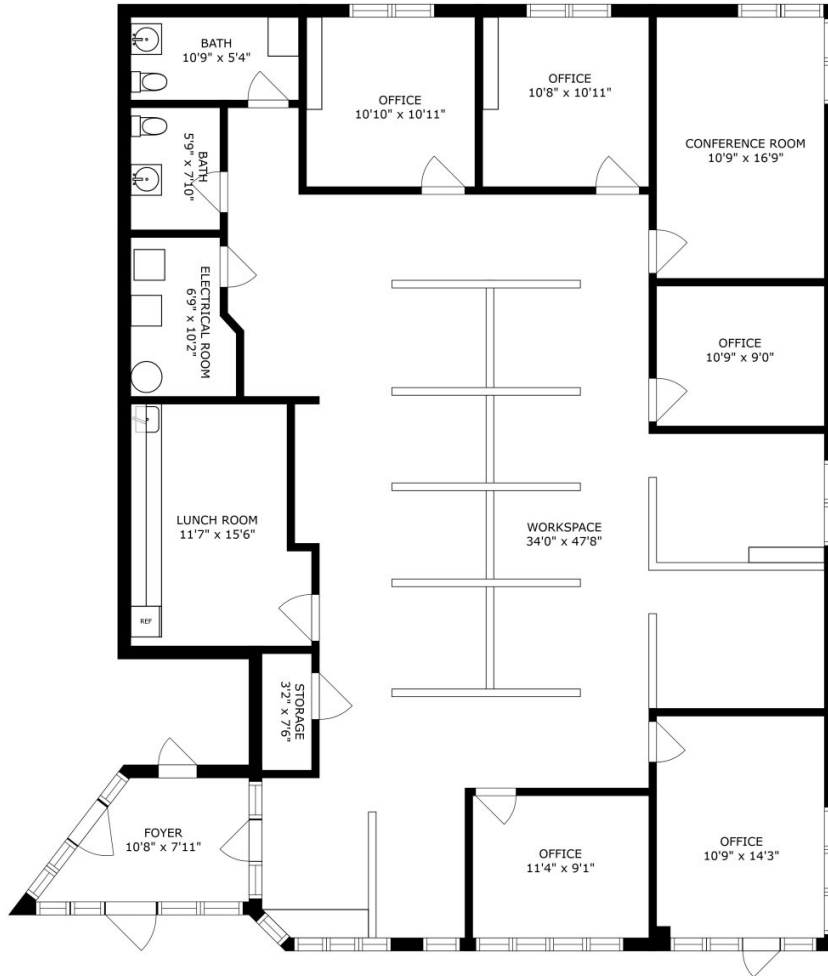




# OFFICE SPACE FOR LEASE

1150 W NORTHWEST HIGHWAY MOUNT PROSPECT, IL

FLOOR PLAN SUITE "B" 2,834 SF



SIZES AND DIMENSIONS ARE APPROXIMATE, ACTUAL MAY VARY.