

DOWNTOWN CREATIVE OFFICE FOR LEASE

303 A STREET | SAN DIEGO | CA | 92101



Steven Martini

Lic # 01330605

619-243-8451

smartini@qfcre.com

Michael Wokuluk

Lic #01972342

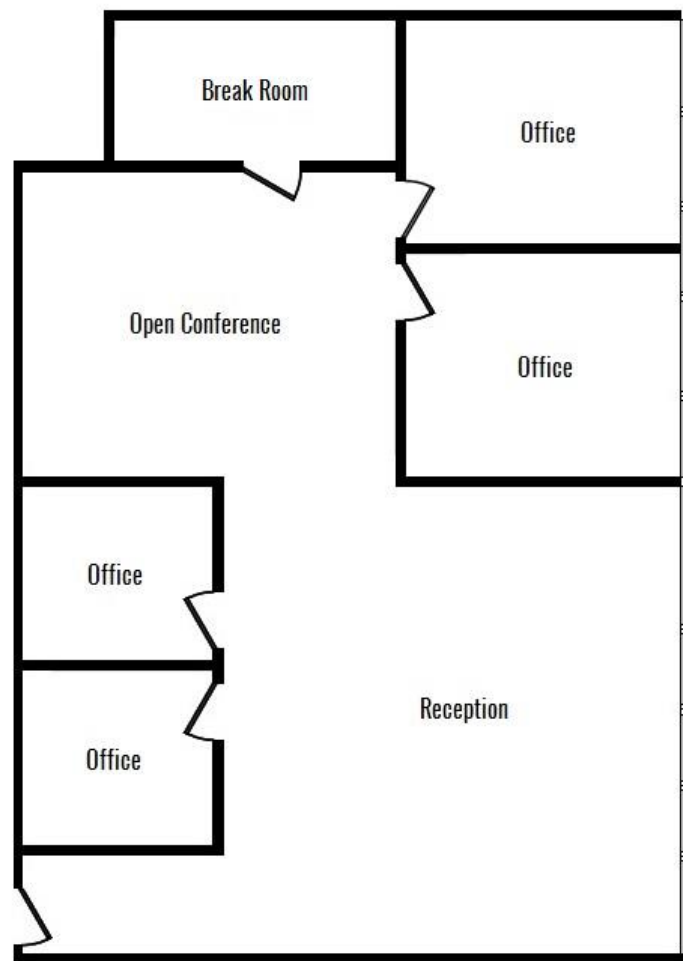
619-243-8459

mwokuluk@qfcre.com

1495 Pacific Highway, Suite 450, San Diego, CA 92101 | (619) 243—8454 | www.qfcre.com

The information contained herein has been obtained from sources considered to be reliable, but no guarantee of its accuracy is made by this company. In addition, no representation is made respecting zoning, condition of title, dimensions, or any matters of a legal or environmental nature. Such matters should be referred to legal counsel for determination. Terms and conditions are subject to change without prior notice. Subject to errors and omissions.

SUITE 302—SPACE PLAN



SUITE 302 DETAILS

- ♦ ±2,052 SF consisting of four (4) offices, kitchenette, reception/open creative space, and open conference area
- ♦ Beautiful third floor north facing Suite with floor to ceiling glass windows
- ♦ Excellent bright interior with natural light and Downtown views
- ♦ Located on corner of 3rd Avenue & A Street
- ♦ Short walk to dining, entertainment, city hall, Horton Plaza, and court houses
- ♦ Easy access to major freeways, airport, trolley, and Amtrak
- ♦ Landlord covers all utilities
- ♦ Potential for expansion if more square footage is required.

LEASE RATE

- ♦ \$2.10/SF (full service)

SUITE 302 INTERIOR PHOTOS



Steven Martini

Lic # 01330605

619-243-8451

smartini@qfcre.com

Michael Wokuluk

Lic #01972342

619-243-8459

mwokuluk@qfcre.com

1495 Pacific Highway, Suite 450, San Diego, CA 92101 | (619) 243—8454 | www.qfcre.com

The information contained herein has been obtained from sources considered to be reliable, but no guarantee of its accuracy is made by this company. In addition, no representation is made respecting zoning, condition of title, dimensions, or any matters of a legal or environmental nature. Such matters should be referred to legal counsel for determination. Terms and conditions are subject to change without prior notice. Subject to errors and omissions.

SUITE 302 INTERIOR PHOTOS



Steven Martini

Lic # 01330605

619-243-8451

smartini@qfcree.com

Michael Wokuluk

Lic #01972342

619-243-8459

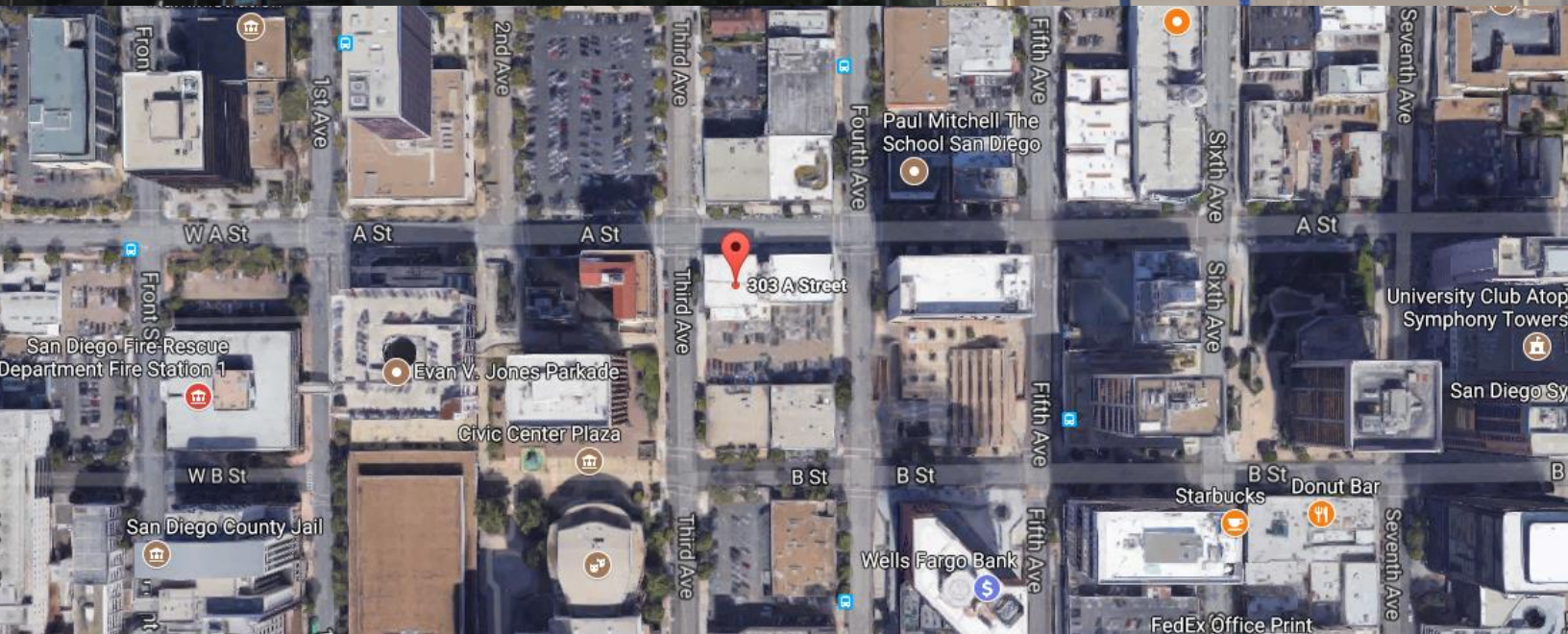
mwokuluk@qfcree.com

1495 Pacific Highway, Suite 450, San Diego, CA 92101 | (619) 243—8454 | www.qfcree.com

The information contained herein has been obtained from sources considered to be reliable, but no guarantee of its accuracy is made by this company. In addition, no representation is made respecting zoning, condition of title, dimensions, or any matters of a legal or environmental nature. Such matters should be referred to legal counsel for determination. Terms and conditions are subject to change without prior notice. Subject to errors and omissions.



303 A Street Offices



Steven Martini

Lic # 01330605

619-243-8451

smartini@qfcree.com

Michael Wokuluk

Lic #01972342

619-243-8459

mwokuluk@qfcree.com

1495 Pacific Highway, Suite 450, San Diego, CA 92101 | (619) 243—8454 | www.qfcree.com

The information contained herein has been obtained from sources considered to be reliable, but no guarantee of its accuracy is made by this company. In addition, no representation is made respecting zoning, condition of title, dimensions, or any matters of a legal or environmental nature. Such matters should be referred to legal counsel for determination. Terms and conditions are subject to change without prior notice. Subject to errors and omissions.