



# THE MOST COVETED RETAIL BUILDING IN BEVERLY HILLS

9528 BRIGHTON WAY, BEVERLY HILLS, CALIFORNIA 90210

## SPACE

9528 Brighton Way, Beverly Hills, CA 90210  
Between Rodeo Drive and Camden Drive

## SIZE

+/- 2,537 SQUARE FEET  
(+/-732 Ground Floor & +/-1,805 2nd Floor)

## RENT

\$15.77 PSF Per Month + NNN (+/- \$8,857 Per Month)

## POSSESSION

Immediately

## HIGHLIGHTS

- Beautifully Built-Out Beverly Hills Retail Space with High End Fixtures
- 2-Story Retail Showroom
- Most Coveted Retail Building in the Beverly Hills Golden Triangle
- Steps Away From Rodeo Drive on the Best Block of Brighton Way
- All-Star Co-Tenancy with Giuseppe Zanotti, Martin Katz Jewelry, Sama, Heron Haberdashery, and Teuscher Chocolates
- Beverly Hills Public Parking Located Next Door
- First-time on the Market in Over 10 Years
- Tremendous Street Exposure for Any Luxury Brand
- Heavy Foot Traffic

These materials are based on information and content provided by others, which we believe are accurate. No guarantee, warranty or representation is made by Commercial Asset Group, Inc. or its personnel. All interested parties must independently verify accuracy and completeness. As well, any projections, assumptions, opinion, or estimates are used for example only and do not represent the current or future performance of the identified property. Your tax, financial, legal and toxic substance advisors should conduct a careful investigation of the property and its suitability for your needs, including land use limitations. The property is subject to prior lease, sale, change in price, or withdrawal from the market without notice.

# 9528 BRIGHTON WAY





DRIVE

FORMER EMPORIO ARMANI

VACANT

Berluti

ISAIA

BRIGHTON WAY



CAMDEN



VHERNIER

MARTIN KATZ

GIUSEPPE ZANOTTI



SUBJECT SPACE



JOSÉ EBER

MR CHOW



ENGEL & VOLKERS



ALLEY

Beverly Hills  
Public Parking  
Structure

DAVID YURMAN

WACHERON CONSTANTIN

Lafayette Fongyong

FENDI

GIUCCI



Edmondegildo Zegna



PIAGET

CÉLINE

MIU MIU

DIOR HOMME



Dior

BURBERRY



DAYTON WAY

ALLEY

ONNE FONTOINE

Bonpoint

Christofle



BVLGARI

GUESS

BARBARA BUI

G-STAR

malo

STUART WEITZMAN  
LAPERLA



PIRELLA GÖTTSCHE LOWE

HERFVILLE

HERFVILLE

LACOSTE

MaxMara

VACANT

SAINT LAURENT PARIS

ZADIG & VOLTAIRE

OSOU LAFFED

SAINT LAURENT PARIS

SAINT LAURENT PARIS

SAINT LAURENT PARIS

SAINT LAURENT PARIS

SAINT LAURENT PARIS

SAINT LAURENT PARIS

SAINT LAURENT PARIS

DRIVE



SAINT LAURENT PARIS

SAINT LAURENT PARIS



HERMÈS PARIS

VERA WANG

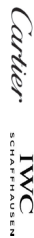
BOSS

BOSS

CHANEL

CHANEL

CHANEL



IWC

roberto cavalli

PATER PHILIPPE

ROLEX

MICHAEL KORS

TOM FORD

BALTY

SHIRT

Adore

MONCLER

SAINT LAURENT PARIS

VALENTINO

BOTTEGA VENETA

DOCE GABBANA

HARRY WINSTON

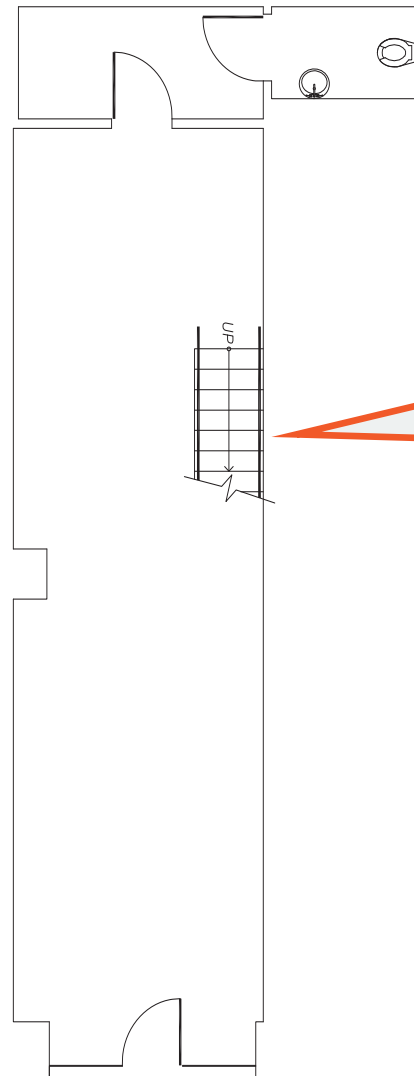
CHANEL

Van Cleef & Arpels

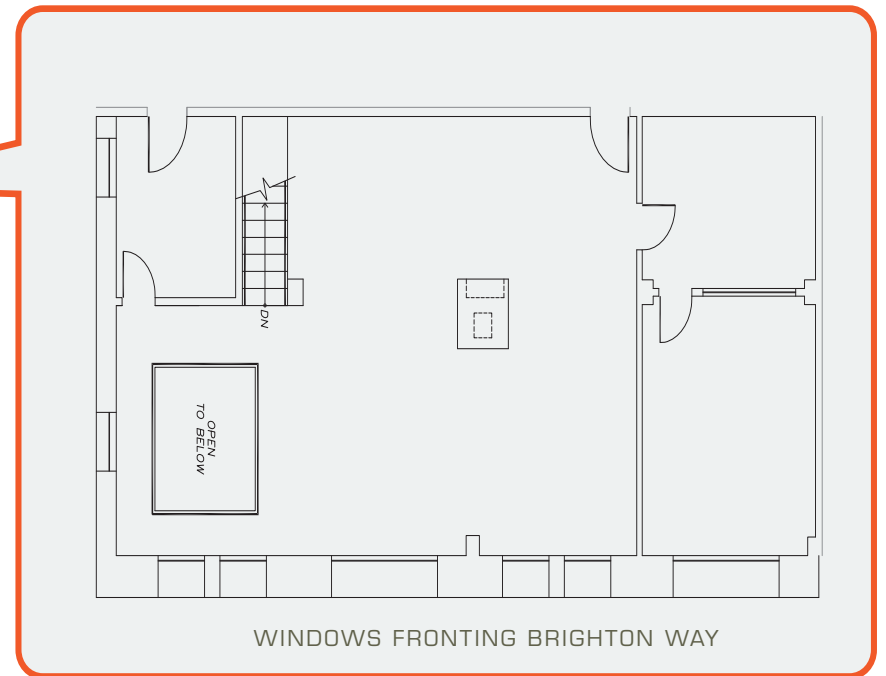
LUXE HOTEL



FIRST FLOOR



SECOND FLOOR



# SITE PLAN AND FLOOR PLAN



David Ickovics  
Principal  
P 310.272.7380  
E [dji@cag-re.com](mailto:dji@cag-re.com)  
Lic. 01315424

David Aschkenasy  
Executive Vice President  
P 310.272.7381  
E [davida@cag-re.com](mailto:davida@cag-re.com)  
Lic. 01714442

Ryan Schimel  
Director  
P 310.272.7384  
E [ryans@cag-re.com](mailto:ryans@cag-re.com)  
Lic. 01879511

**cag** | COMMERCIAL  
ASSET GROUP