



SHELBY COMMERCE PARK LAND AVAILABLE

CALERA, ALABAMA

SALE

Highway 31
Calera, AL

SITE

(+/-) 50 Acres

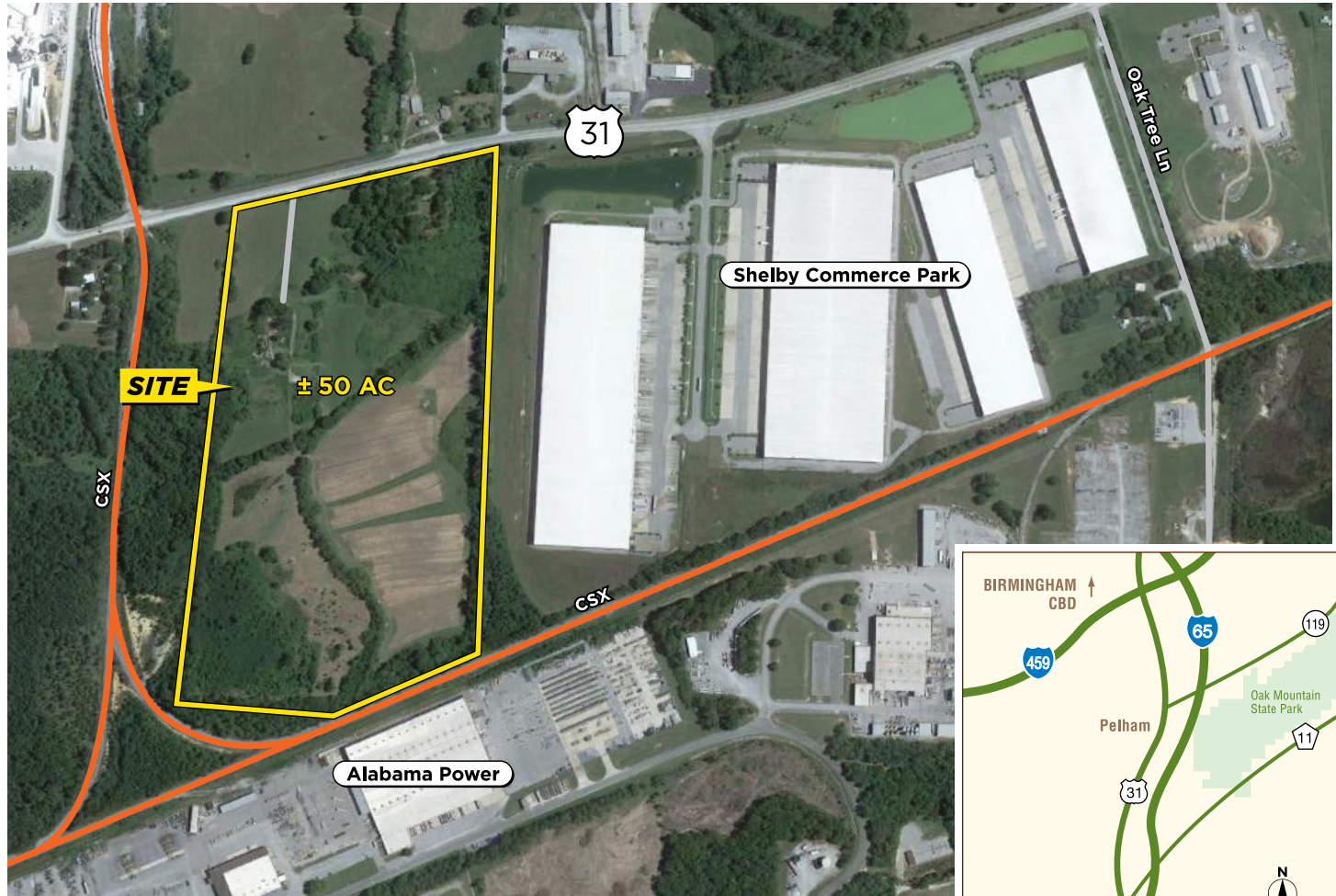
PROPERTY INFORMATION

- 1 mile from I-65
- Adjacent to Class A 1,500,000 sf Shelby Commerce Park
- CSX rail available
- Entrance road on Hwy 31 approved by DOT
- All utilities to site
- **Build-to-suit available**

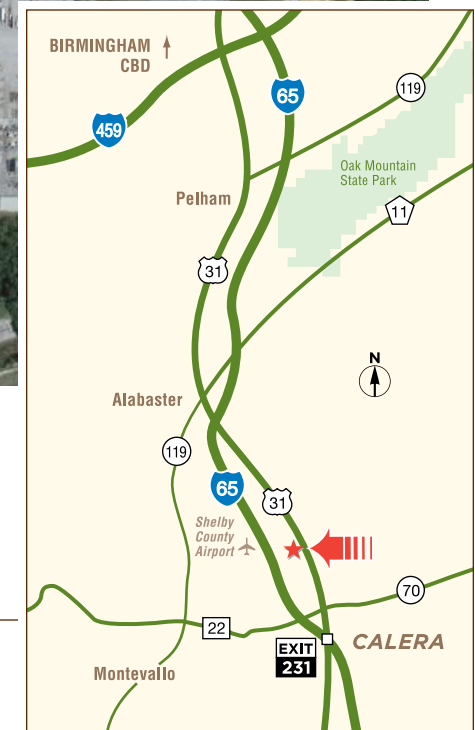
Information deemed reliable, but not guaranteed.

EXCLUSIVE AGENT

Ogden Deaton, SIOR
205.871.7100
ogdend@grahamcompany.com



SALE PRICE
\$80,000 per acre



1801 Fifth Avenue North
Suite 300
Birmingham, AL 35203

TEL 205.871.7100
FAX 205.871.3331
grahamcompany.com

10/16/17 JC