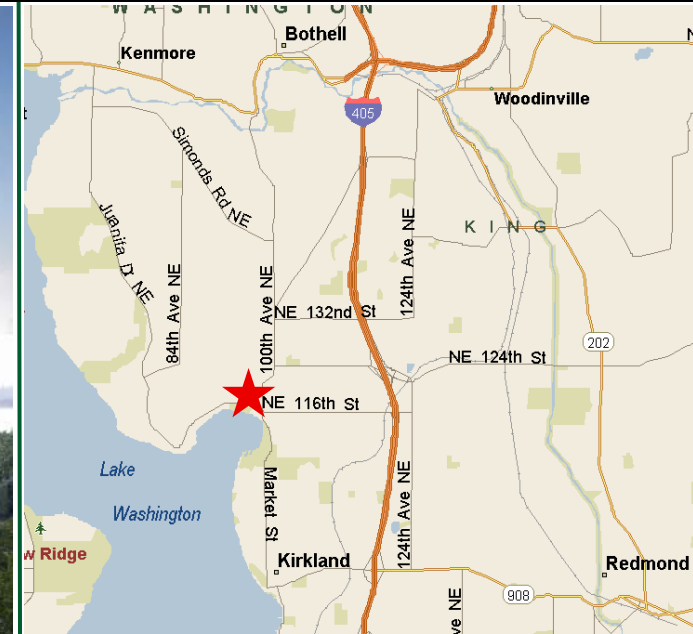


NOW LEASING!

Waterscape at Juanita Village

near NWC of NE Juanita Dr. & 98th Ave. NE
Kirkland, WA



Join:

Demographics

	1 Mile	3 Mile	5 Mile
Population	15,131	89,543	265,301
Avg. HH Income	\$95,970	\$111,989	\$110,538
Daytime Population	4,442	42,128	118,859

- ❖ Highly Successful Phase II of Juanita Urban Village ~ 196 Units Over Retail Shops!
- ❖ Construction Complete: September 2013
- ❖ Available Spaces: 978 SF-1,920 SF
- ❖ Rate: \$28.50-\$30.00 SF, NNN
- ❖ 600 Apartment Units in Village Now ~ 300 More Under Construction

For More Information Please Contact:

STEVE ERICKSON
serickson@fwp-inc.com

THOMAS HARSH
tharsh@fwp-inc.com

520 Kirkland Way, Suite 100 | PO Box 3388 | Kirkland, WA 98033 | office 425.822.5522 | fax 425.822.7440

VIEW ALL OUR PROPERTIES @ WWW.FWP-INC.COM

The information supplied herein is from sources we deem reliable, it is provided without any representation warranty or guarantee, expressed or implied, as to its accuracy. Prospective Buyer or Tenant should conduct an independent investigation and verification of all matters deemed to be material, included, but not limited to statements of income and expenses. CONSULT YOUR ATTORNEY, ACCOUNTANT OR OTHER PROFESSIONAL ADVISOR.

NOW LEASING



For More Information Please Contact:

STEVE ERICKSON
serickson@fwp-inc.com

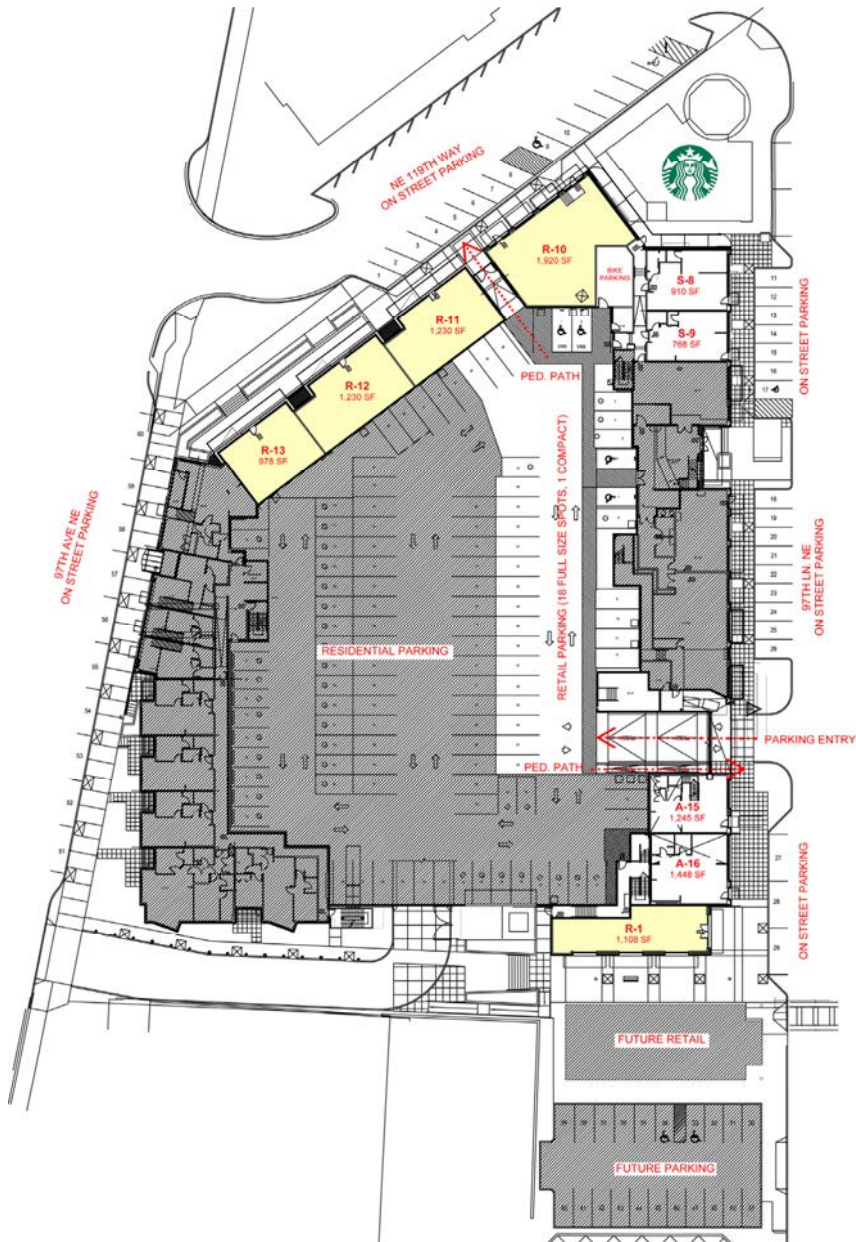
THOMAS HARSH
tharsh@fwp-inc.com

520 Kirkland Way, Suite 100 | PO Box 3388 | Kirkland, WA 98033 | office 425.822.5522 | fax 425.822.7440

COMMERCIAL LEASING & SALES
FIRST WESTERN
PROPERTIES, INC.
VIEW ALL OUR PROPERTIES @ WWW.FWP-INC.COM

The information supplied herein is from sources we deem reliable, it is provided without any representation warranty or guarantee, expressed or implied, as to its accuracy. Prospective Buyer or Tenant should conduct an independent investigation and verification of all matters deemed to be material, included, but not limited to statements of income and expenses. CONSULT YOUR ATTORNEY, ACCOUNTANT OR OTHER PROFESSIONAL ADVISOR.

NOW LEASING



For More Information Please Contact:

STEVE ERICKSON
serickson@fwp-inc.com

THOMAS HARSH
tharsh@fwp-inc.com

520 Kirkland Way, Suite 100 | PO Box 3388 | Kirkland, WA 98033 | office 425.822.5522 | fax 425.822.7440



The information supplied herein is from sources we deem reliable, it is provided without any representation warranty or guarantee, expressed or implied, as to its accuracy. Prospective Buyer or Tenant should conduct an independent investigation and verification of all matters deemed to be material, included, but not limited to statements of income and expenses. CONSULT YOUR ATTORNEY, ACCOUNTANT OR OTHER PROFESSIONAL ADVISOR.