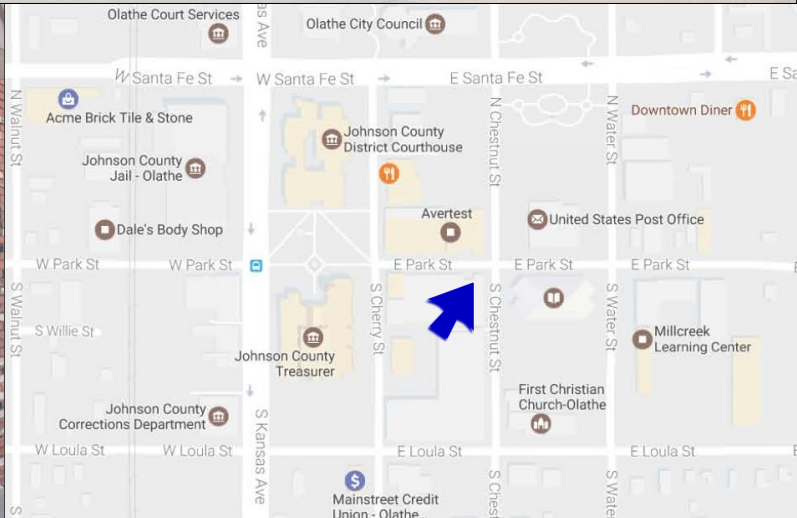


Downtown Olathe Office Space for Lease 103 South Chestnut

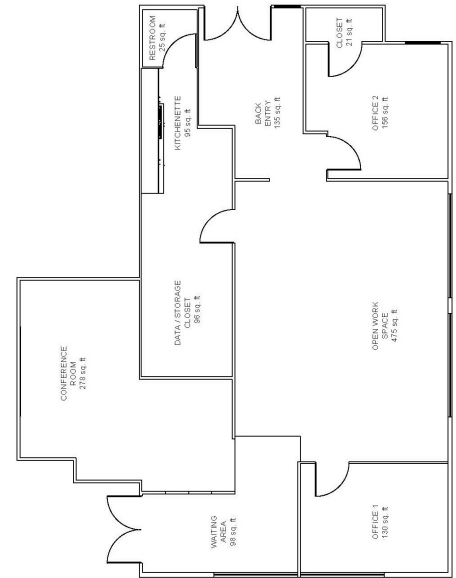


W A T E R F O R D

PROPERTY COMPANY, LLC

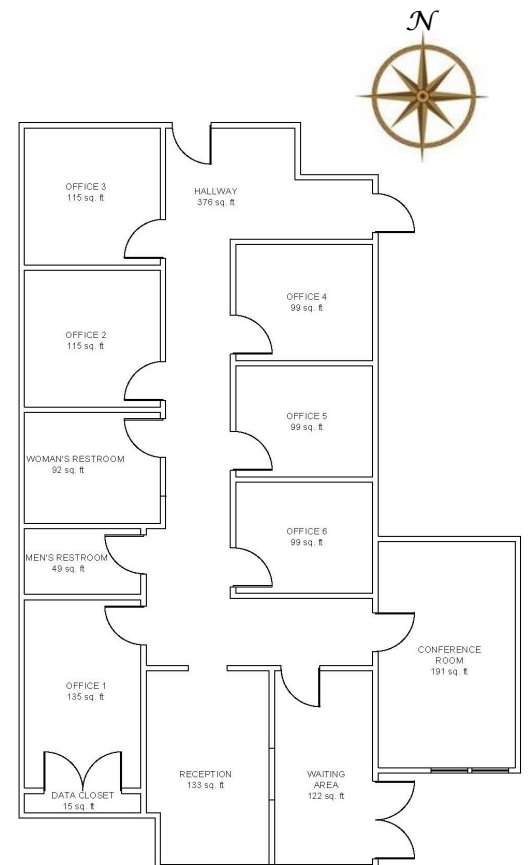
Downtown Olathe Office Space for Lease

Information | 103 South Chestnut



Information:

- Two separate suites available.
- Each up to approximately 2,000 square feet.
- Walking distance to Johnson County court house.
- Direct access to parking garage.
- Close proximity to coffee shops, shopping and restaurants.
- \$15.00 per rentable square foot rate.



Laura Fornelli

Cell: (913) 909-7745

Laura.fornelli@waterfordproperty.net