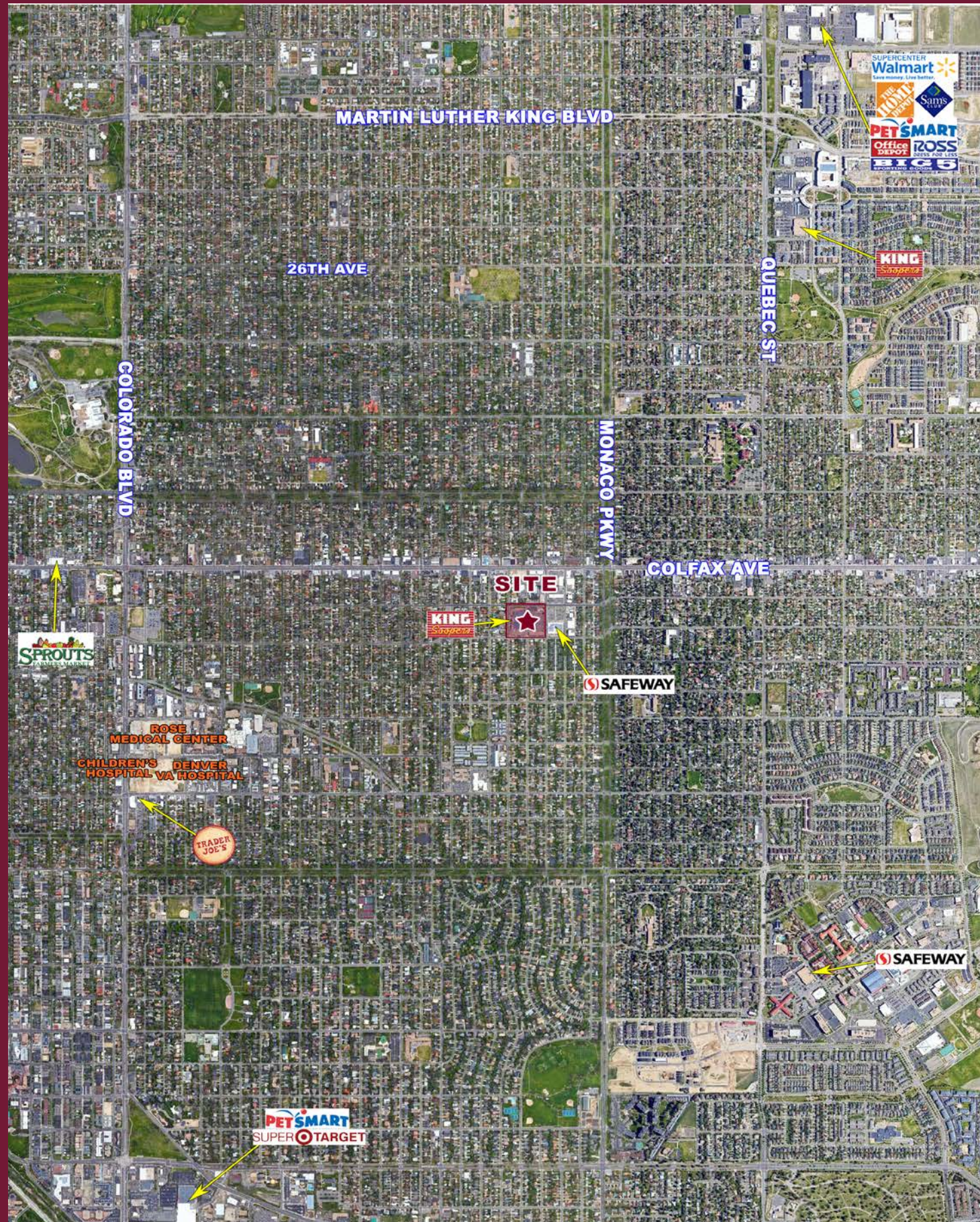
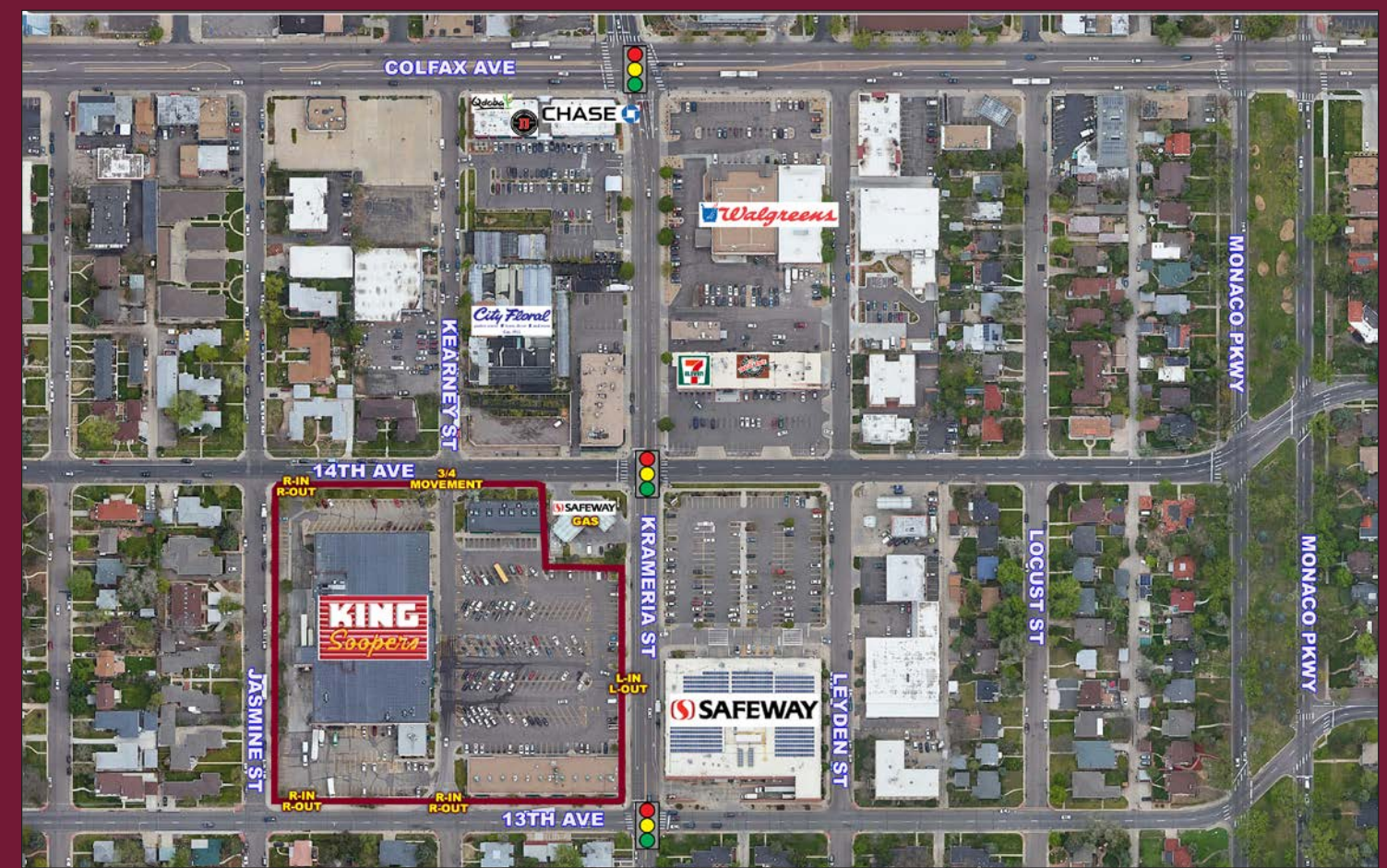


1355 KRAMERIA STREET | DENVER, COLORADO 80220



SHOPS AVAILABLE IN KING SOOPERS ANCHORED CENTER

1355 KRAMERIA STREET | DENVER, COLORADO 80220



INFORMATION

- Shops available in King Soopers anchored center
- Available uses - pizza, wireless, sandwich, fitness & others
- Unique infill location with high population and traffic
- Aggressive lease rates

DEMOGRAPHICS

	1 MILE	2 MILE	3 MILE
Est. Population	19,115	95,079	194,510
Avg Household Inc	\$117,530	\$113,792	\$98,465
Employees	5,877	32,834	106,808
Businesses	924	3,636	10,755

Source: Applied Geographic Solutions 2017

TRAFFIC COUNTS

On Colfax Ave east of Monaco Pkwy	30,000 cars/day
On Colfax Ave East of Colorado Blvd	28,000 cars/day

Source: CDOT 2016

5570 DTC Parkway | Suite 100 | Greenwood Village, Colorado 80111 | 303.534.0900 Fax: 303.831.1333 | www.sullivanhayes.com

SullivanHayes
B R O K E R A G E

we are
RETAIL
A MEMBER OF
CHAINLINKS
RETAIL ADVISORS
AGENCY
DISCLOSURE

Bryan Slaughter
303.370.7459 | bslaughter@sullivanhayes.com
Ryan Kiernan
303.370.7466 | rkiernan@sullivanhayes.com



14TH AVE



NOT PART
SAFEWAY
GAS

16

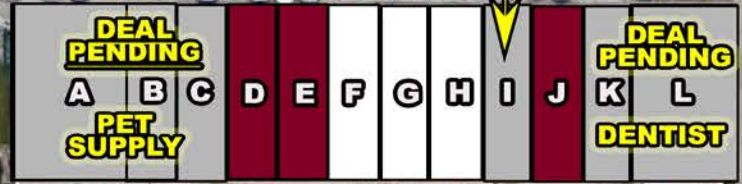


JASMINE ST

KRAMERIA ST

Upper 14
Former
Medical
Center
Lower 15

DEAL PENDING
DISCOUNT HAIR
CUTTER



13TH AVE

LEGEND

■ = Available □ = Leased

MAYFAIR PLAZA DIRECTORY

1	Mayfair Liquors	6,200 SF
L	PENDING DEAL	1,350 SF
K	PENDING DEAL	1,200 SF
J	Available	1,200 SF
I	PENDING DEAL	1,200 SF
H	Postal Centers	1,200 SF
G	Little Dragon	1,200 SF
F	Nails Touch	1,200 SF
E	Available	1,200 SF
D	Available	1,200 SF
C	PENDING DEAL	1,200 SF
B	PENDING DEAL	1,200 SF
A	PENDING DEAL	1,350 SF
14	Available - FMC-upper	2,000 SF
15	Available - FMC-lower	2,000 SF
16	King Soopers	61,013 SF