

5.85 ACRES AVAILABLE FOR SALE OR BUILD TO SUIT

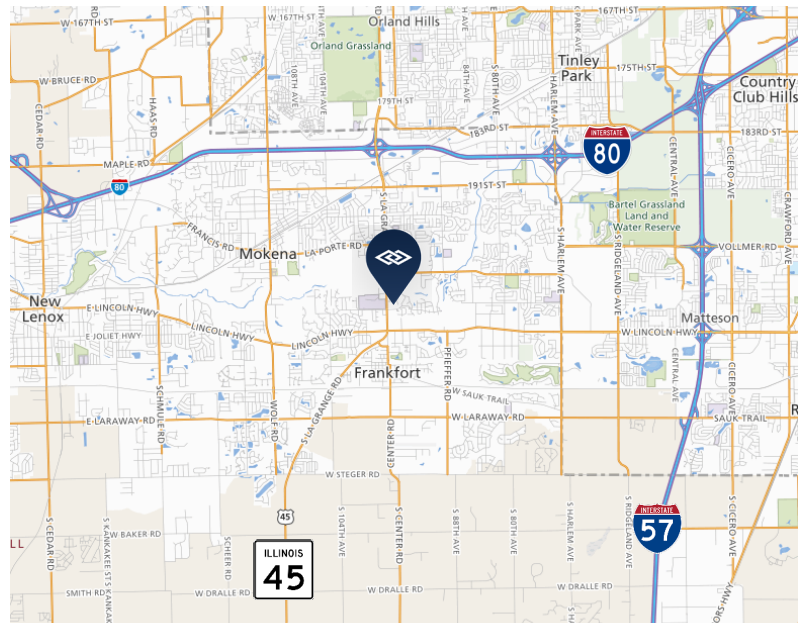
20400 LA GRANGE ROAD, FRANKFORT, IL



AVAILABLE SIZE: +/- 5.92 Acres
ZONING: Business Commercial
PRICE: \$1,200,000.00 (\$4.70psf)

FEATURES:

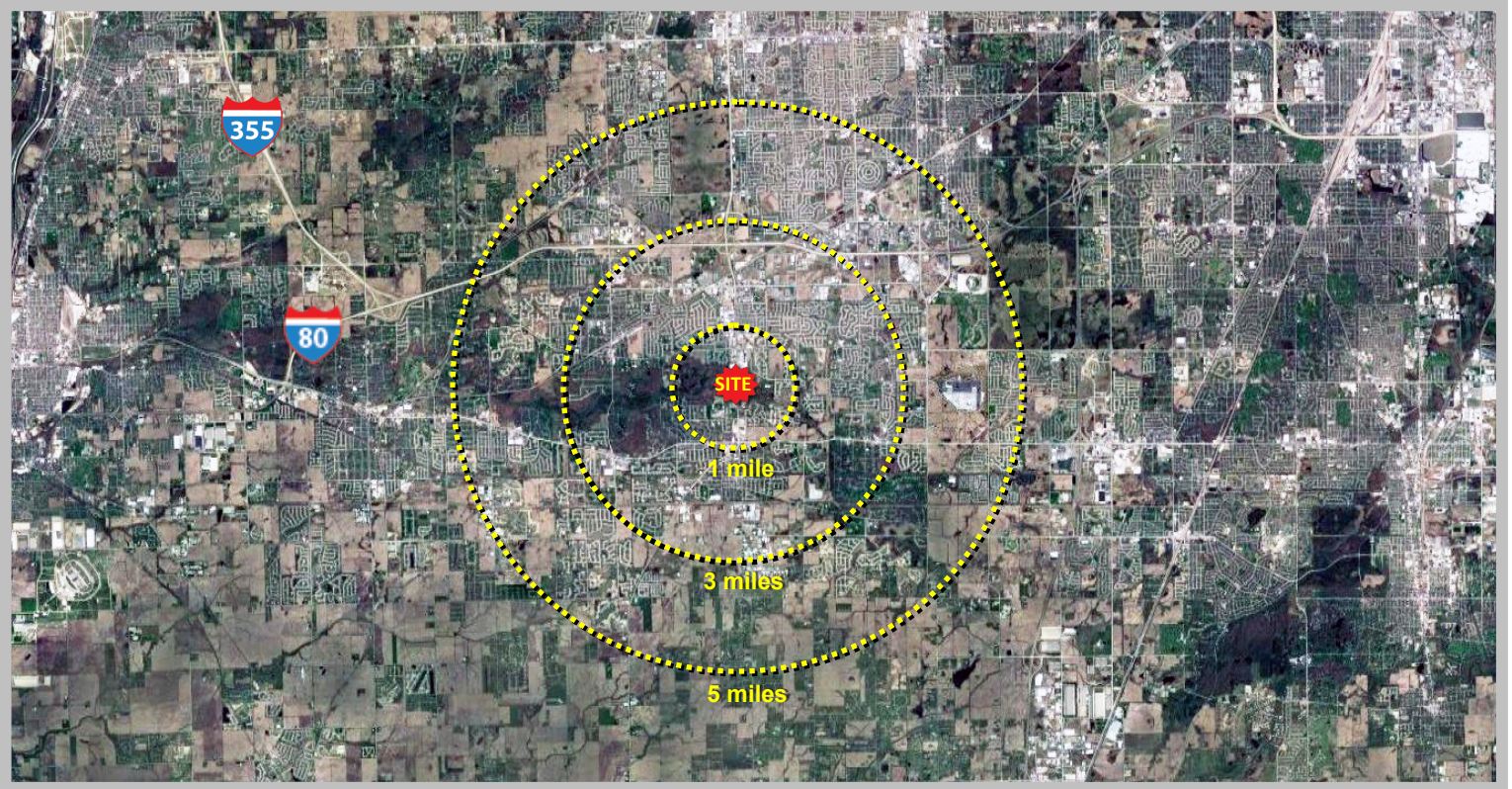
- Commercial development site
- Frontage on La Grange Road
- Traffic count: Over 20,000 vehicles per day
- Low Will County taxes
- Located near retail, restaurants, and hotels



| | | | |
|---|---|--|---|
| <p>FOR ADDITIONAL INFORMATION, PLEASE CONTACT:</p> | <p>Adam Haefner Dir. of Brokerage Services ahaefner@darwinrealty.com</p> | <p>Zeke Rowan Associate zrowan@darwinrealty.com</p> | <p>Marty Mikaitis Associate mmikaitis@darwinrealty.com</p> |
|---|---|--|---|

5.85 ACRES AVAILABLE FOR SALE OR BUILD TO SUIT
20400 LA GRANGE ROAD, FRANKFORT, IL

Demographics



| | <u>1 Mile</u> | <u>3 Miles</u> | <u>5 Miles</u> |
|---------------------------------|---------------|----------------|----------------|
| Population: | 3,857 | 49,668 | 123,990 |
| Median Household Income: | \$93,659 | \$98,597 | \$93,172 |

**FOR ADDITIONAL
 INFORMATION,
 PLEASE CONTACT:**

Adam Haefner
 Dir. of Brokerage Services
ahaefner@darwinrealty.com

Zeke Rowan
 Associate
zrowan@darwinrealty.com

Marty Mikaitis
 Associate
mmikaitis@darwinrealty.com

5.85 ACRES AVAILABLE FOR SALE OR BUILD TO SUIT

20400 LA GRANGE ROAD, FRANKFORT, IL

PLAT OF SURVEY

PROFESSIONAL LAND SURVEYING, INC.

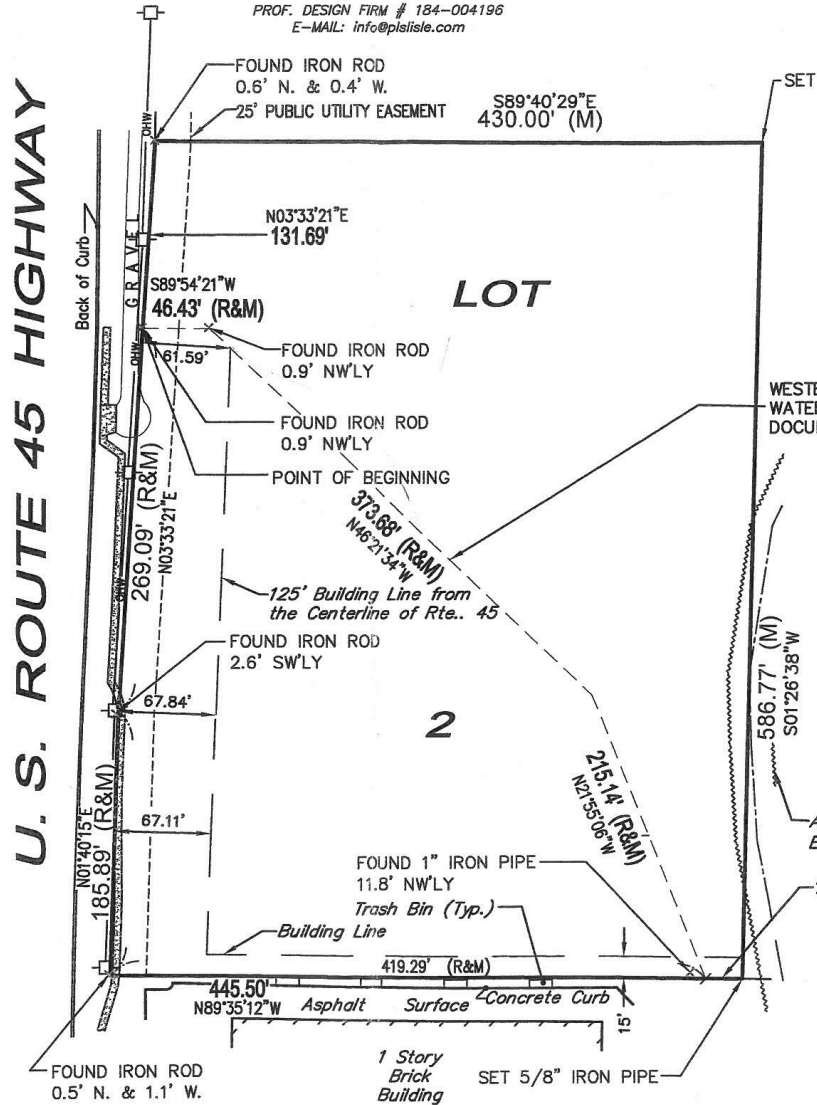
3080 OGDEN AVENUE SUITE 307

LISLE, ILLINOIS 60532

PHONE: 630-778-1757

PROF. DESIGN FIRM # 184-004196

E-MAIL: info@plsilsle.com



FOR ADDITIONAL
INFORMATION,
PLEASE CONTACT:

Adam Haefner
Dir. of Brokerage Services
ahaefner@darwinrealty.com

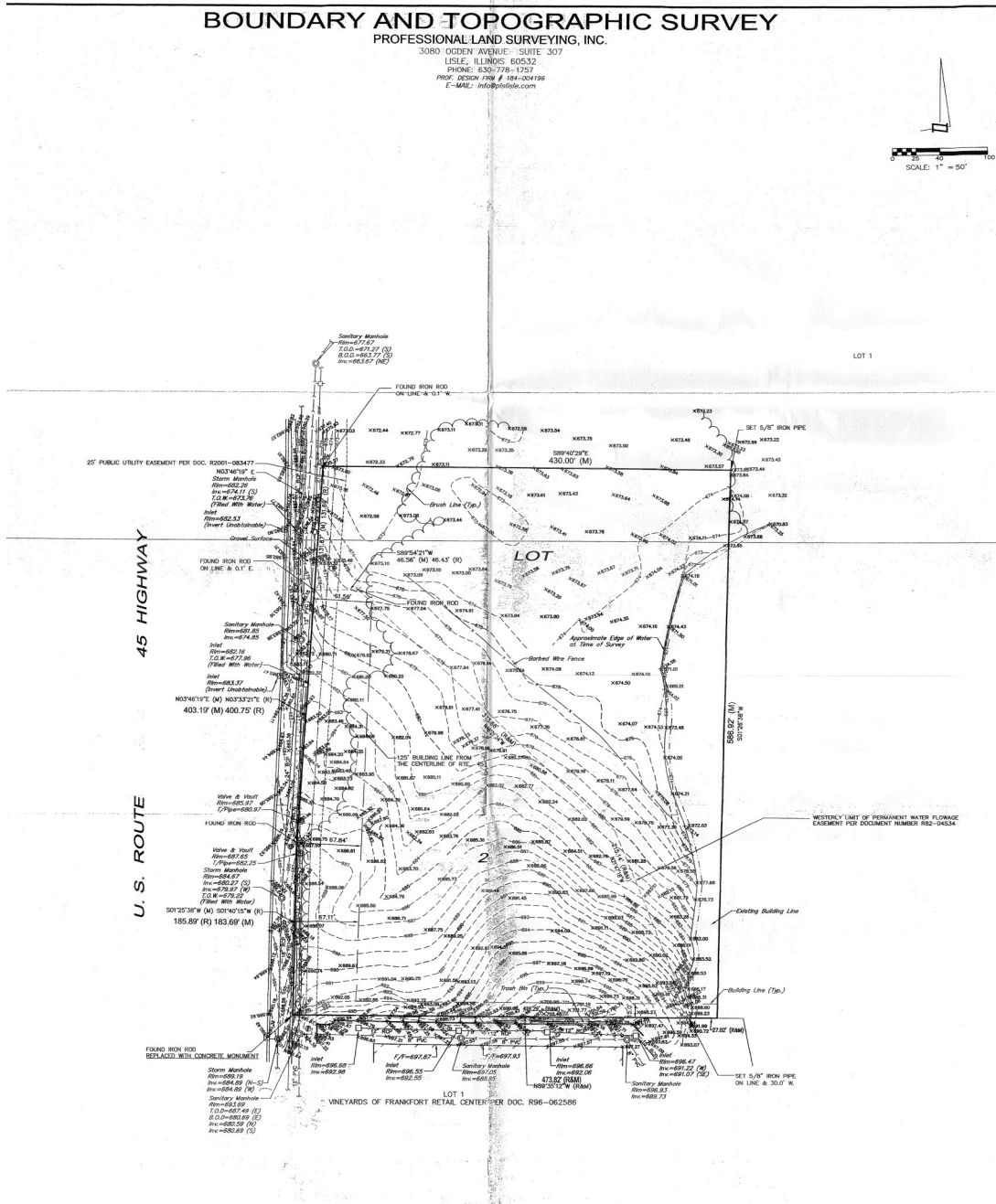
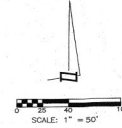
Zeke Rowan
Associate
zrowan@darwinrealty.com

Marty Mikaitis
Associate
mmikaitis@darwinrealty.com

5.85 ACRES AVAILABLE FOR SALE OR BUILD TO SUIT
20400 LA GRANGE ROAD, FRANKFORT, IL

BOUNDARY AND TOPOGRAPHIC SURVEY
 PROFESSIONAL LAND SURVEYING, INC.

3080 OGDEN AVENUE SUITE 307
 Lisle, IL 60532
 PHONE: 630-778-1757
 PLOT DESIGN # 184-04196
 E-MAIL: info@plula.com



| | | | |
|---|--|---|---|
| <p>FOR ADDITIONAL INFORMATION, PLEASE CONTACT:</p> | <p>Adam Haefner Dir. of Brokerage Services ahaefner@darwinrealty.com</p> | <p>Zeke Rowan Associate zrowan@darwinrealty.com</p> | <p>Marty Mikaitis Associate mmikaitis@darwinrealty.com</p> |
|---|--|---|---|