

# 7103 EAST THOMAS RD.

SCOTTSDALE, AZ 85251

OFFICE/MEDICAL SUITE AVAILABLE FOR LEASE



**EXCLUSIVE CONTACT:**  
**ALEX KAUFMANN**  
D 480.889.2567  
M 480.285.5331  
akaufmann@cpiaz.com



**COMMERCIAL PROPERTIES INC.**

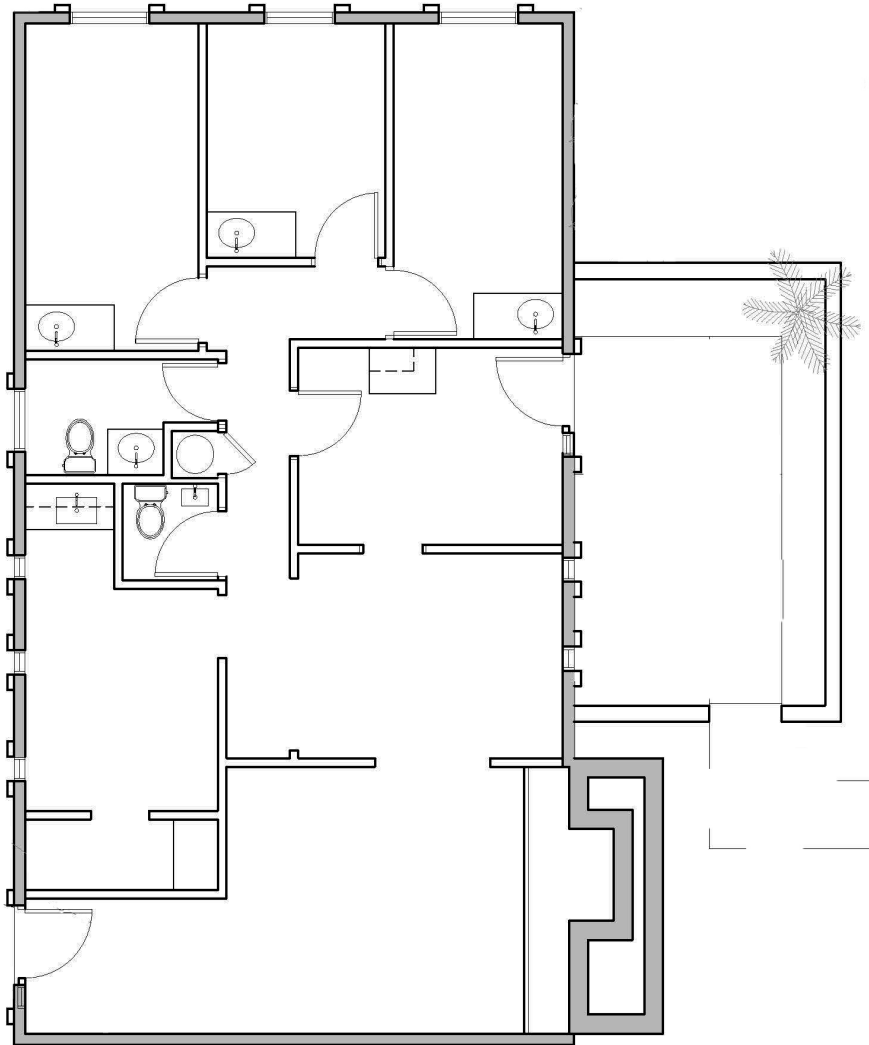
Locally Owned. Globally Connected. CPPIAC International

TEMPE: 2323 W. University Drive, Tempe, AZ 85281 | 480.966.2301  
SCOTTSDALE: 8777 N. Gainey Center Dr., Suite 245, Scottsdale, AZ 85258 | www.cpiaz.com

The information contained herein has been obtained from various sources. We have no reason to doubt its accuracy; however, J & J Commercial Properties, Inc. has not verified such information and makes no guarantee, warranty or representation about such information. The prospective buyer or lessee should independently verify all dimensions, specifications, floor plans, and all information prior to the lease or purchase of the property. All offerings are subject to prior sale, lease, or withdrawal from the market without prior notice. Effective 07 15 19

# Floor Plan & Details

OFFICE/MEDICAL SUITE AVAILABLE FOR LEASE



## 7103 EAST THOMAS RD. SCOTTSDALE, AZ 85251

- ±7,103 Square Feet
- Located at Scottsdale Rd & Thomas Rd
- Reception, 4 Offices, Conference Room, Break Room, Bullpan, 2 Restrooms
- Parcel: 129-01-088
- 6/1,000 Parking Ratio
- Zoning: S-R, City of Scottsdale
- Lease Rate: \$1.61 NNN




The information contained herein has been obtained from various sources. We have no reason to doubt its accuracy; however, J & J Commercial Properties, Inc. has not verified such information and makes no guarantee, warranty or representation about such information. The prospective buyer or lessee should independently verify all dimensions, specifications, floor plans, and all information prior to the lease or purchase of the property. All offerings are subject to prior sale, lease, or withdrawal from the market without prior notice. Effective 07 19 19

EXCLUSIVE CONTACT



**COMMERCIAL  
PROPERTIES INC.**

Locally Owned. Globally Connected. 

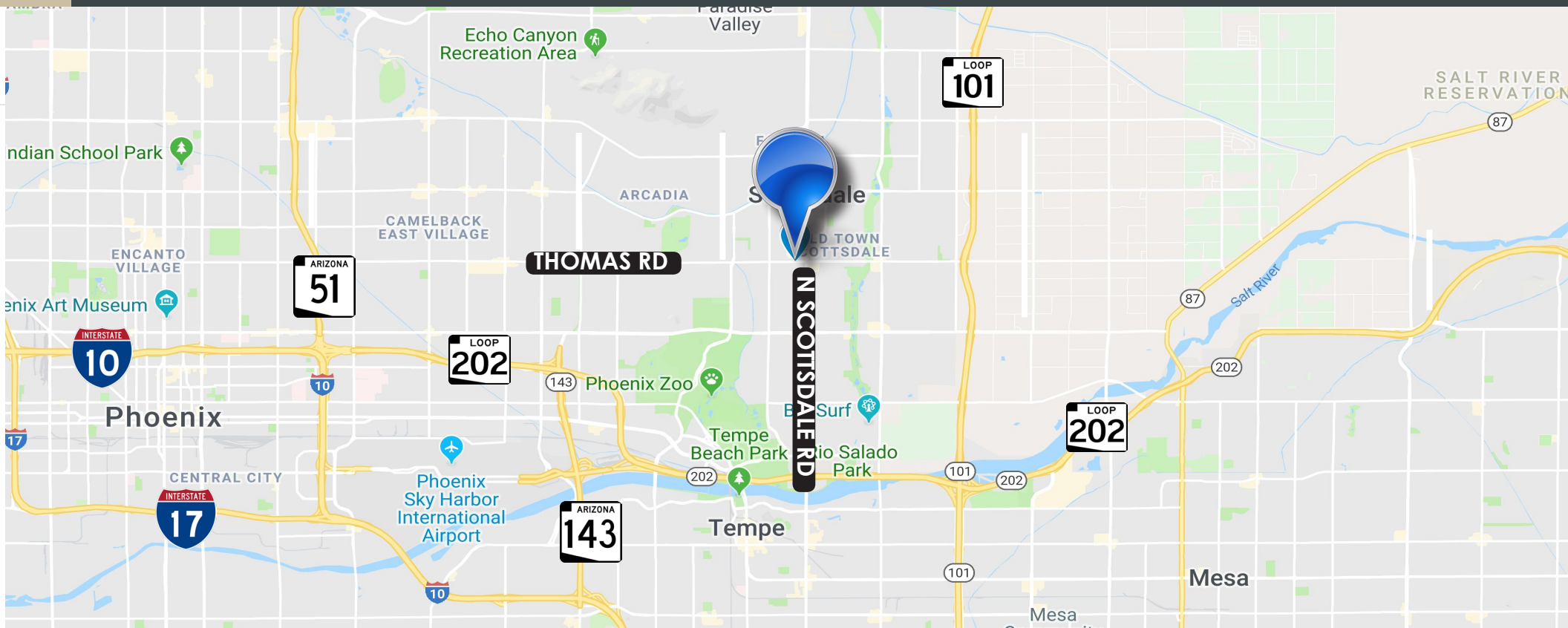
**ALEX KAUFMANN**

**D 480.889.2567**

**M 480.285.5331**

**akaufmann@cpi.az.com**

# 7103 E THOMAS RD



## Property Demographics

CoStar (2019)	1 MI	3 MI	5 MI
2019 Population	26,819	110,743	274,022
2024 Population	29,827	120,201	297,841
Pop Growth 2019-2024	11.22%	8.54%	8.69%
2019 Households	12,195	51,991	119,015
Median HH Income	\$54,221	\$59,651	\$51,063

