

2605 OAKLEY PARK ROAD
COMMERCE TWP, MICHIGAN



**SIGNATURE
ASSOCIATES**
KNOW SIGNATURE | KNOW RESULTS

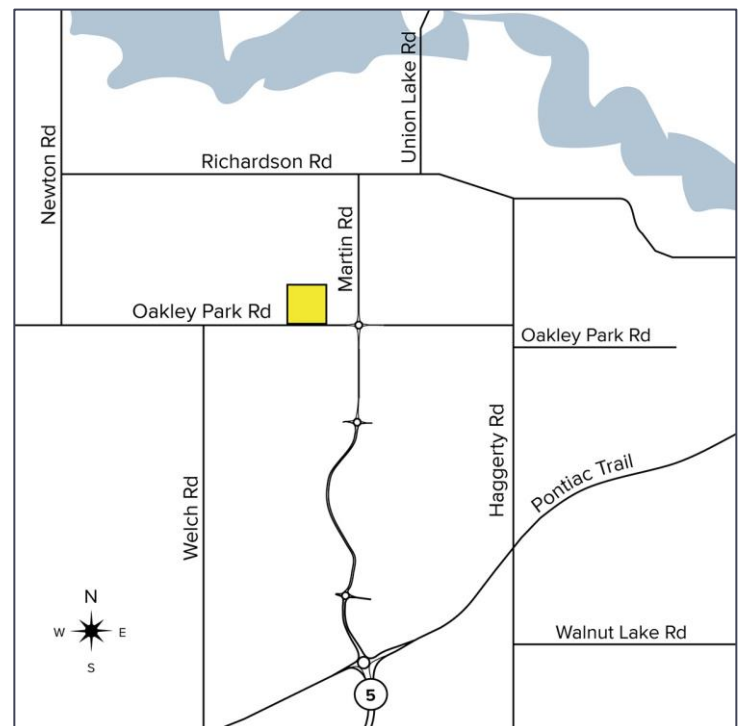
HI-TECH / WAREHOUSE AVAILABLE
4,800 – 22,400 Square Feet

BURKE AGENCY BUILDING



PROPERTY FEATURES

- 22,400 square foot building for sale
- 4,800-11,200 square feet available for lease
 - Unit C: 4,800 sq. ft. is 100% warehouse. Can buildout offices; restrooms, 100% air-conditioned
 - Unit D: 6,400 sq. ft. of office/warehouse space, mezzanine plus fenced outside storage
 - Units C & D can be combined for 11,200 sq. ft.
- Zoned light industrial
- 18' clear height
- (2) 12x14 grade level doors
- Spectacular building with abundant glass line, skylights, and fire suppression system
- Next to Martin Parkway (extension of M-5)
- Owner will sell the property and leaseback the front 11,200 sq. ft. for 5 years
- Lease Rate: \$6.95/sq. ft. NNN
- Asking Price: \$2,100,000



For more information, please contact:

JEFF LEMANSKI

(248) 359 0641

jlemanski@signatureassociates.com

SIGNATURE ASSOCIATES

One Towne Square, Suite 1200

Southfield, MI 48076

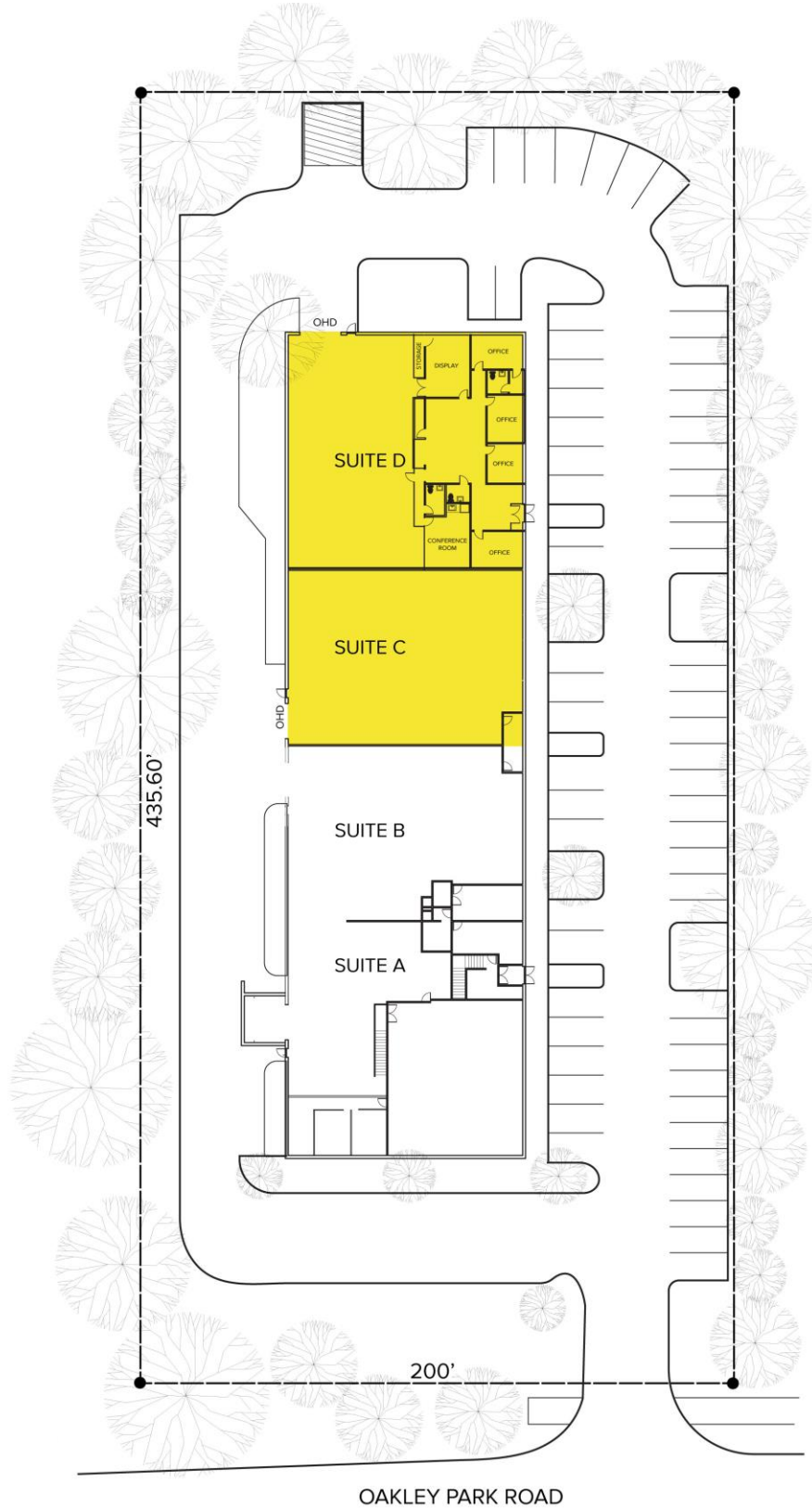
www.signatureassociates.com

2605 Oakley Park Road – Commerce Twp, Michigan

Hi-Tech/Warehouse Available

4,800-22,400
Square Feet
AVAILABLE

Site Plan



For more information, please contact:

JEFF LEMANSKI
(248) 359 0641
jlemanski@signatureassociates.com

SIGNATURE ASSOCIATES
One Towne Square, Suite 1200
Southfield, MI 48076
www.signatureassociates.com

2605 Oakley Park Road – Commerce Twp, Michigan

Hi-Tech/Warehouse Available

4,800-22,400
Square Feet
AVAILABLE

Floor Plan



For more information, please contact:

JEFF LEMANSKI

(248) 359 0641

jlemanski@signatureassociates.com

SIGNATURE ASSOCIATES

One Towne Square, Suite 1200

Southfield, MI 48076

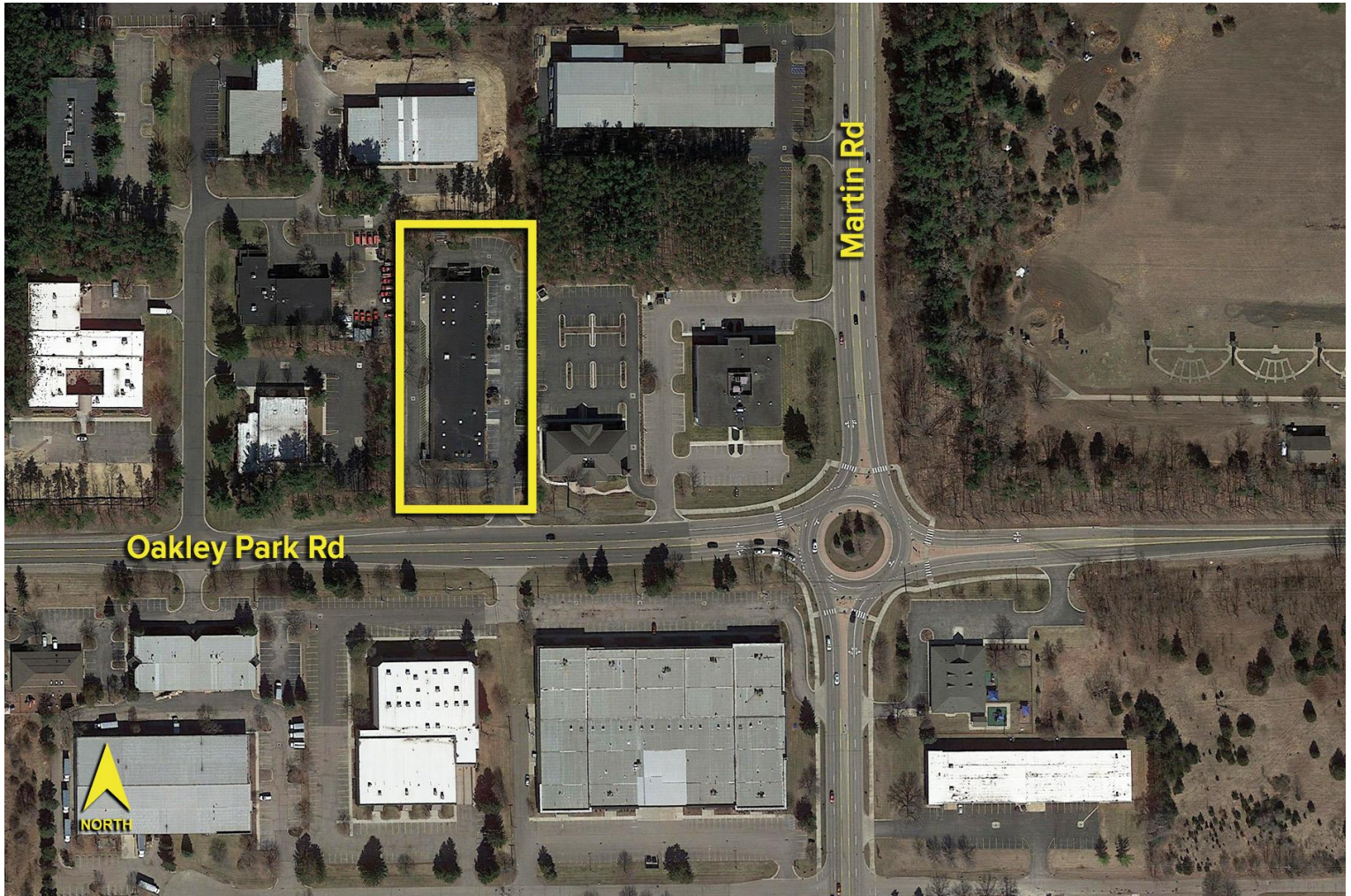
www.signatureassociates.com

2605 Oakley Park Road – Commerce Twp, Michigan

Hi-Tech/Warehouse Available

4,800-22,400
Square Feet
AVAILABLE

Aerial



For more information, please contact:

JEFF LEMANSKI
(248) 359 0641
jlemanski@signatureassociates.com

SIGNATURE ASSOCIATES
One Towne Square, Suite 1200
Southfield, MI 48076
www.signatureassociates.com