

# PAVED LOT FOR LEASE

## 1007 FRANKLIN STREET

@ ROUTE 1 AND CAPITAL BELTWAY | ALEXANDRIA, VIRGINIA

TARTAN  
PROPERTIES



### OFFERING SUMMARY

Lease Rate: \$3,250 per month

Lot Size: 0.189 Acres / 8,229 SF

Zoning: CSL  
(Commercial Service Low)

### PROPERTY OVERVIEW

Fenced, paved lot available for lease at the signalized intersection of Route 1 and Franklin Street, the south end of the City of Alexandria. Can be used for vehicle storage.

### PROPERTY HIGHLIGHTS

- Secure, paved lot for vehicle storage
- Lease term negotiable
- .1 mile from entrance to Beltway/I-495
- 8 miles from I-395 at Springfield
- Available immediately

Leasing by:

**MIKE PORTERFIELD**

703.836.6555 x101 | mike@tartanproperties.com



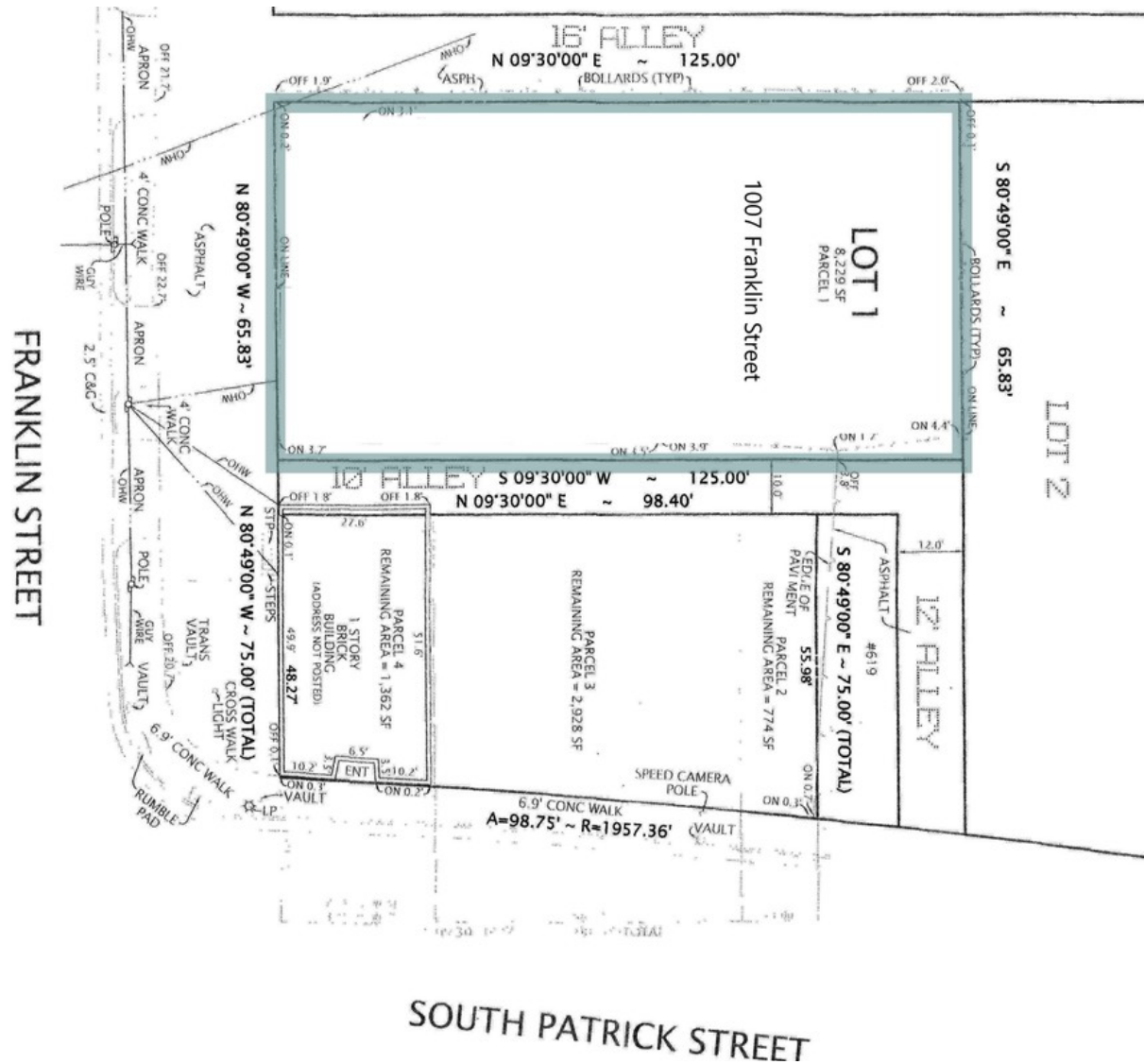
www.tartanproperties.com

# PAVED LOT FOR LEASE

## 1007 FRANKLIN STREET

@ ROUTE 1 AND CAPITAL BELTWAY | ALEXANDRIA, VIRGINIA

TARTAN  
PROPERTIES



Leasing by:

**MIKE PORTERFIELD**

703.836.6555 x101 | [mike@tartanproperties.com](mailto:mike@tartanproperties.com)



[www.tartanproperties.com](http://www.tartanproperties.com)