



±7,000 SF Medical Office Building

10 MEMORIAL MEDICAL DRIVE

Greenville, SC 29605

Presented By:

Edward Wilson
Managing Director
864.679.8600
edward.wilson@wilsonkibler.com



101 East McBee Avenue, Greenville, SC 29601 |
www.wilsonkibler.com

THE INFORMATION CONTAINED HEREIN HAS BEEN GIVEN TO US BY THE OWNER OF THE PROPERTY OR OTHER SOURCES WE DEEM RELIABLE. WE HAVE NO REASON TO DOUBT ITS ACCURACY, BUT WE DO NOT GUARANTEE IT. ALL INFORMATION SHOULD BE VERIFIED PRIOR TO PURCHASE OR LEASE.

10 MEMORIAL MEDICAL DRIVE

Greenville, South Carolina 29605



Property Features

LOCATION: Great corner office building within Memorial Medical Park

- AVAILABILITY:**
- ◆ Currently an operating dialysis clinic
 - ◆ 8 exam rooms
 - ◆ Large waiting area
 - ◆ Large back office operations area
 - ◆ 8 offices and private conference room upstairs

Specifications

Total Size	+/- 7,000 SF
Sale Price	\$825,000
Price per SF	\$117.86
Parking	6.86:1,000 parking ratio
Zoning	C-2

Demographics

	1 Mile	3 Miles	5 Miles
Population	5,776	55,248	125,677
No. of Households	2,428	22,603	50,166
Avg. HH Income	\$54,203	\$55,700	\$53,760

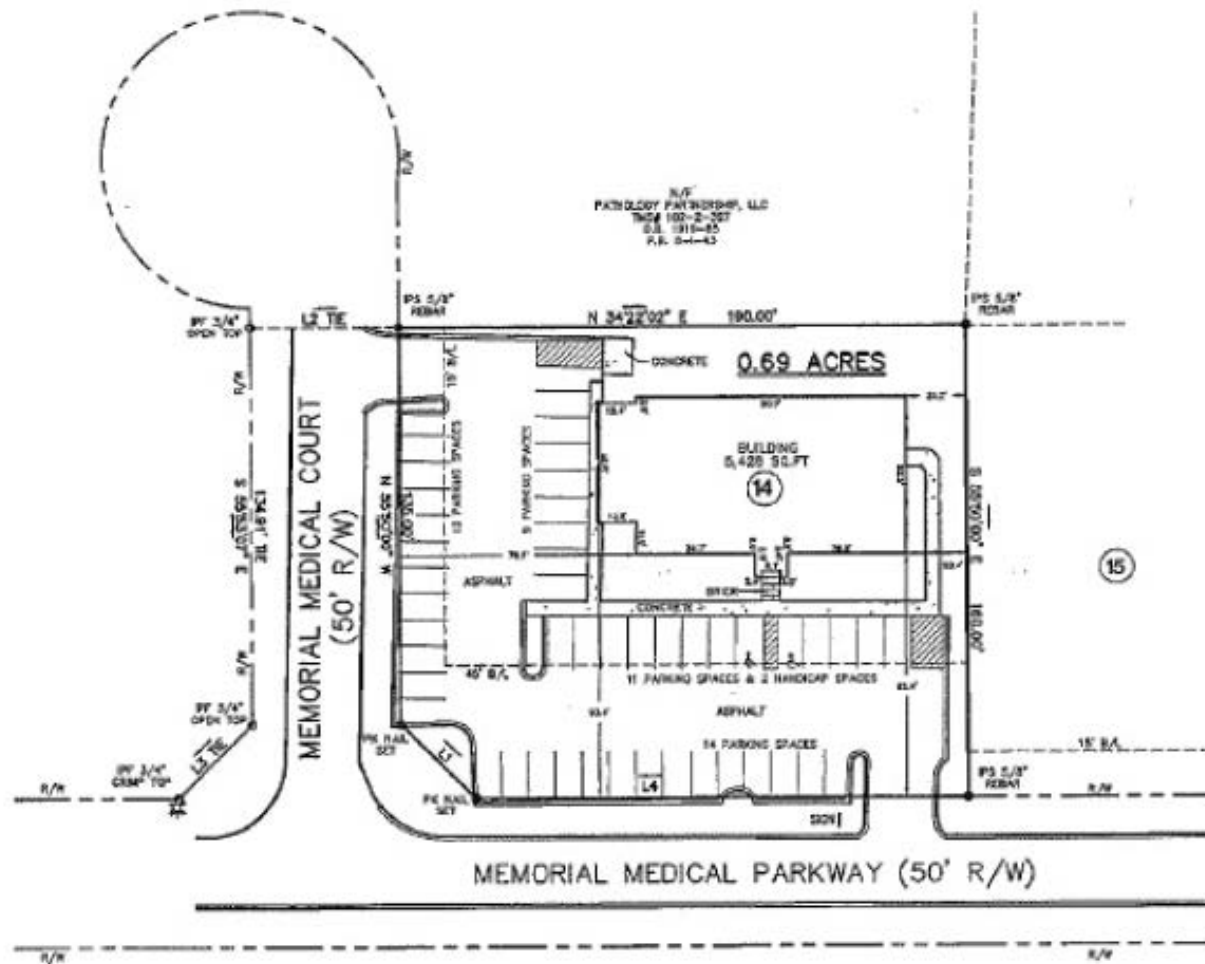


10 MEMORIAL MEDICAL DRIVE

Greenville, South Carolina 29605



Site Plan

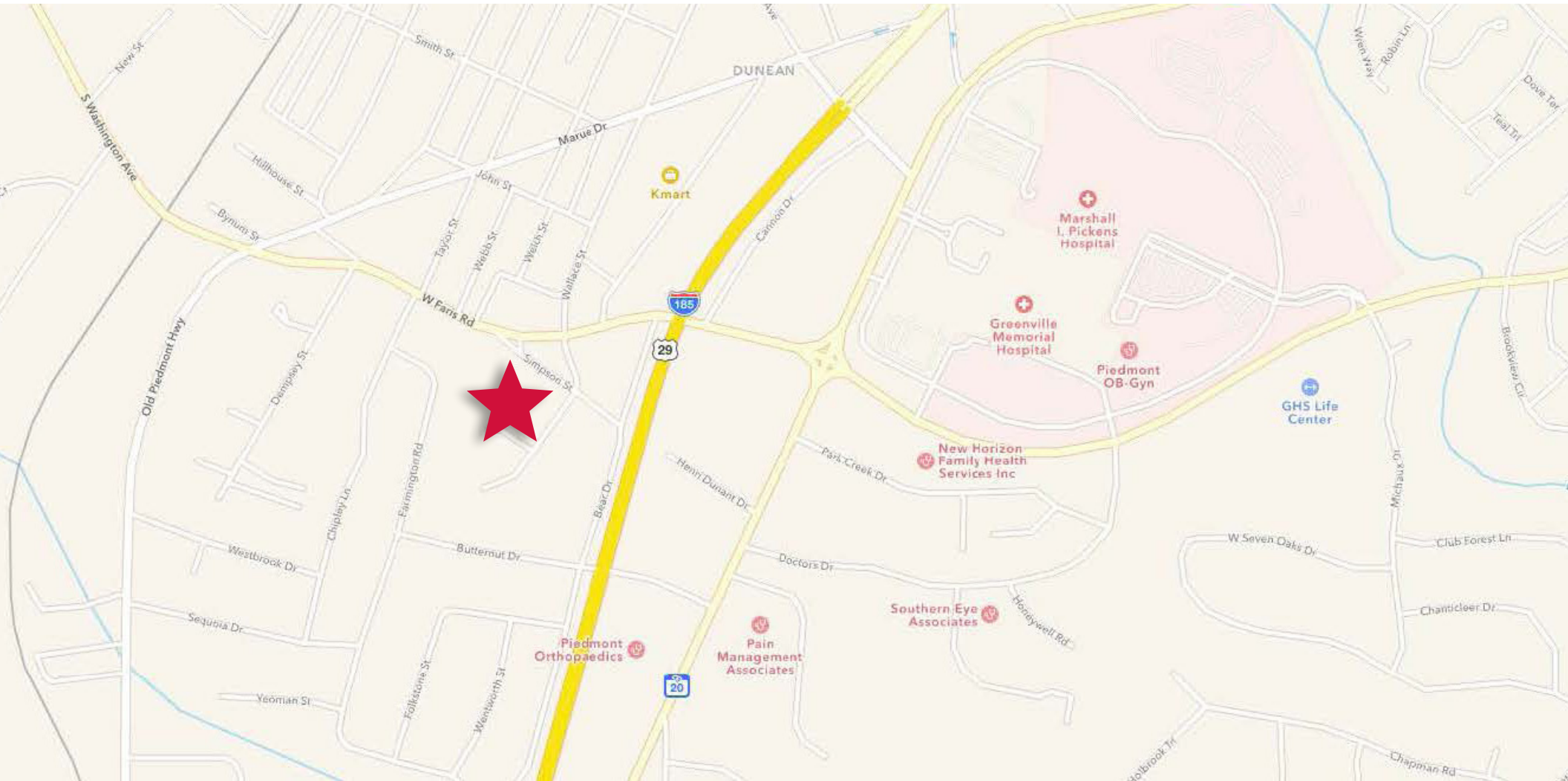


10 MEMORIAL MEDICAL DRIVE

Greenville, South Carolina 29605



Location Map



10 MEMORIAL MEDICAL DRIVE

Greenville, South Carolina 29605



Property Pictures



10 MEMORIAL MEDICAL DRIVE

Greenville, South Carolina 29605



Aerial

