

**750 LODER ST**  
**PRATTVILLE, AL 36066**

# Executive Summary



## OFFERING SUMMARY

Sale Price: \$255,000

Lot Size: 0.73 Acres

Year Built: 1974

Building Size: 5,257

Zoning: Commercial

Price / SF: \$48.51

## PROPERTY HIGHLIGHTS

- Directly off Main St. Prattville, AL
- 0.3 Miles from Prattville Elementary & Intermediate Schools
- 3.7 Miles from I-65
- Currently Operating as daycare, Former Kindercare
- Updates and Upgrades made in 2017
- On-Site Parking for employees and customers
- A functional building that is perfect for a daycare or school use.
- Location is in a high traffic area with a dense population
- The Kitchen and Playground Equipment Remain

## DEMOGRAPHICS

	1 MILE	5 MILES	10 MILES
Total Households	1412	15724	30491
Total Population	3734	41574	84489
Average HH Income	\$59,872	\$65,989	\$65,154

**JON MASTERS, CCIM**

334.387.2724  
Jmasters@mcrmpm.com

**MOORE COMPANY REALTY**

312 Catoma St #200, Montgomery, AL 36104  
334.262.1958 | moorecompanyrealty.com

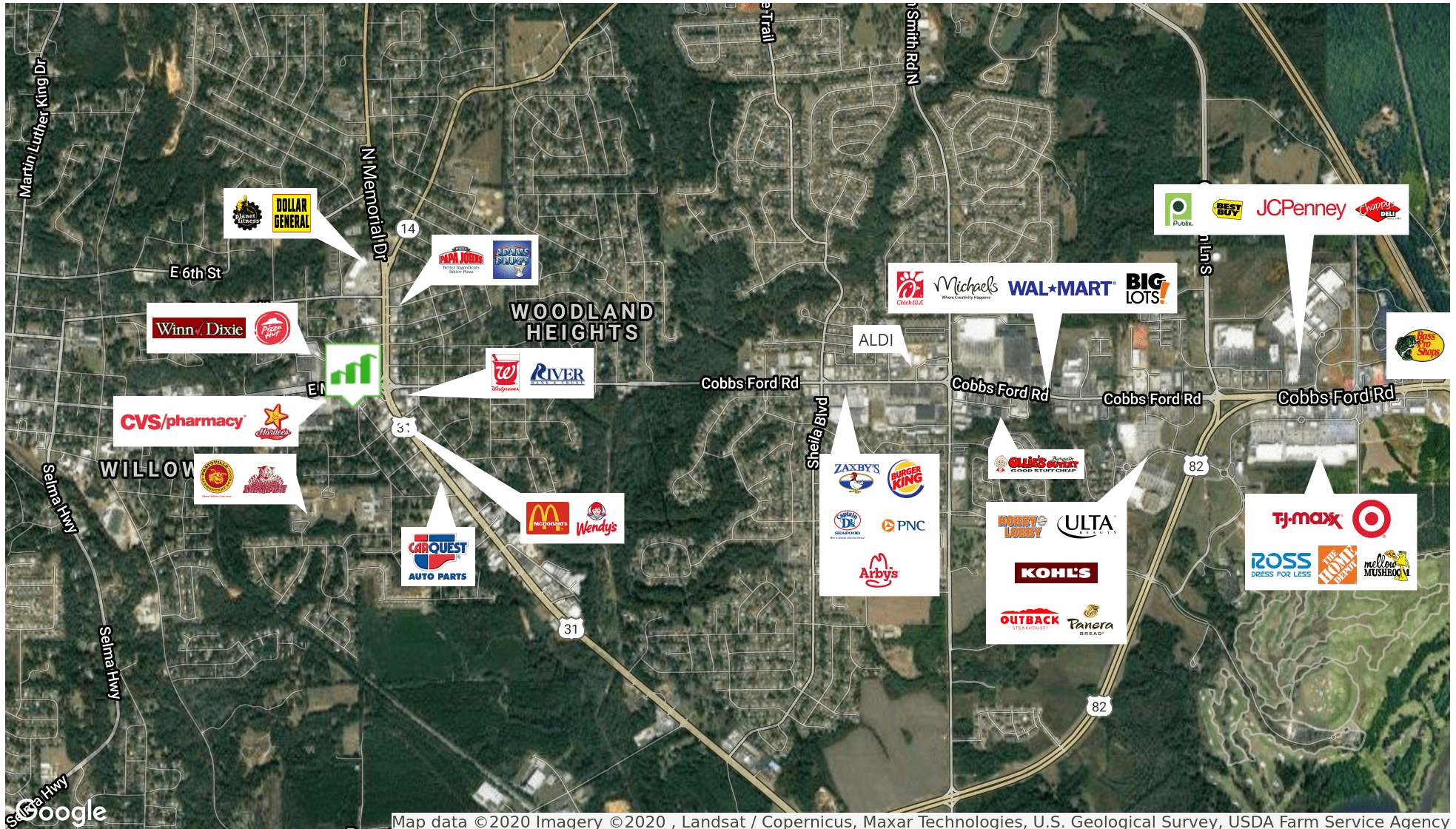




750 LODER ST

PRATTVILLE, AL 36066

# Retailer Map



JON MASTERS, CCIM

334.387.2724

Jmasters@mcrmpm.com

MOORE COMPANY REALTY

312 Catoma St #200, Montgomery, AL 36104

334.262.1958 | moorecompanyrealty.com

