

6133

6TH AVE S

SEATTLE, WA 98108

GEORGETOWN
STANDALONE FLEX

21,332 RSF



CBRE

BUILDING SPECS

- Mix of private offices, conference rooms, open office and large assembly areas
- 1 grade level and 1 dock high
- +/- 27 parking stalls
- Gated loading access
- Excellent visibility and access from 6th Ave S and South Michigan Street
- Available April 1, 2022

GEORGETOWN STANDALONE FLEX

21,332 RSF





CONCEPTUAL RENDERING

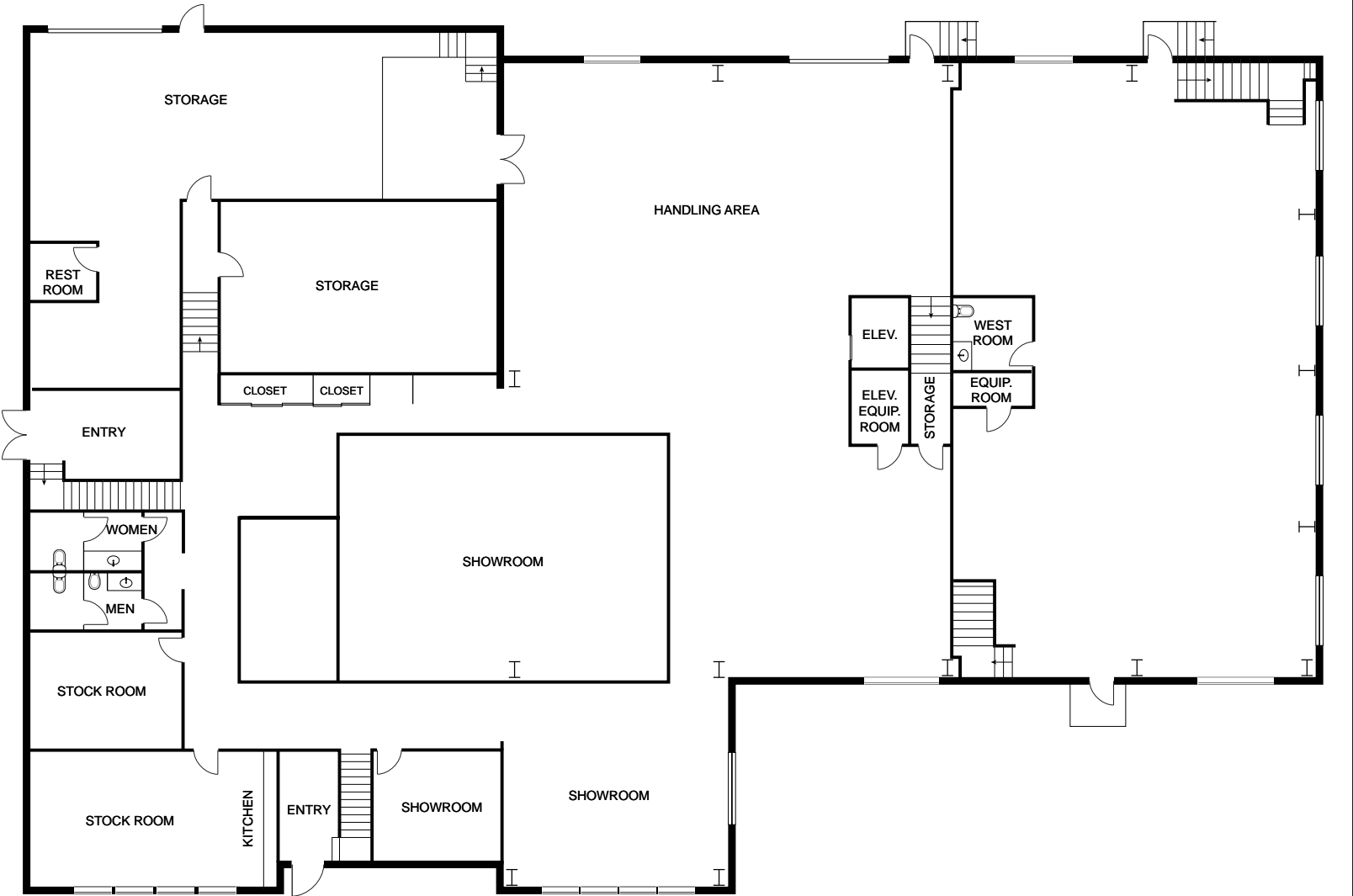


CONCEPTUAL RENDERING



SIDE ENTRANCE TO PARKING

GROUND FLOOR | WAREHOUSE & SHOWROOM



SECOND FLOOR | OFFICES & SHOWROOM

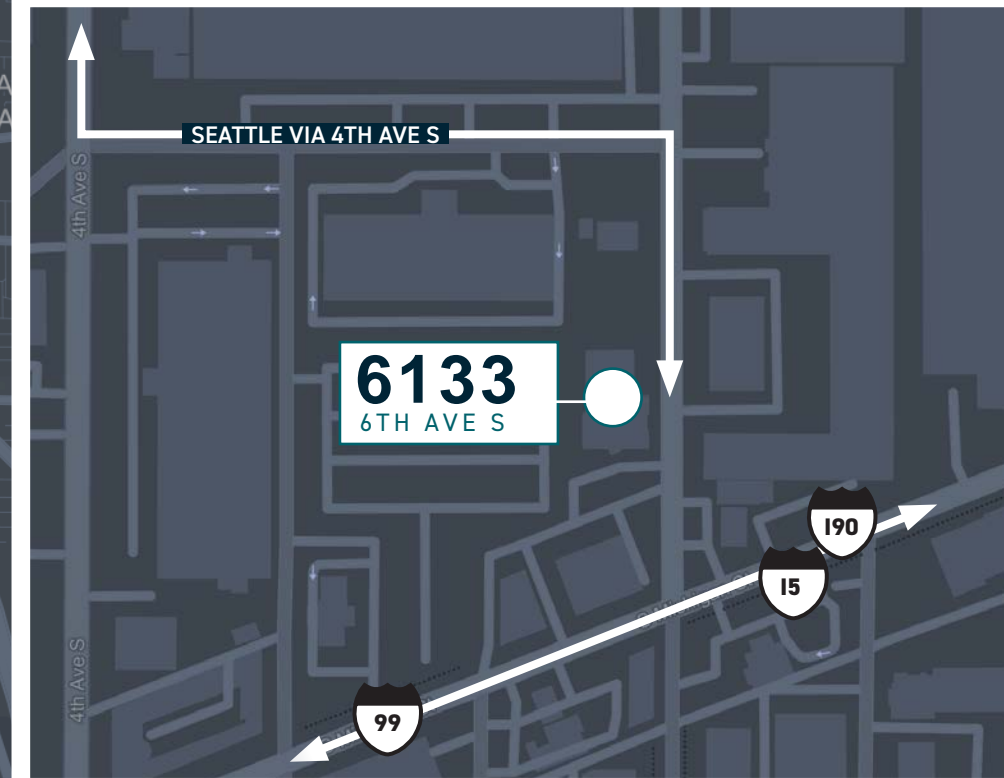
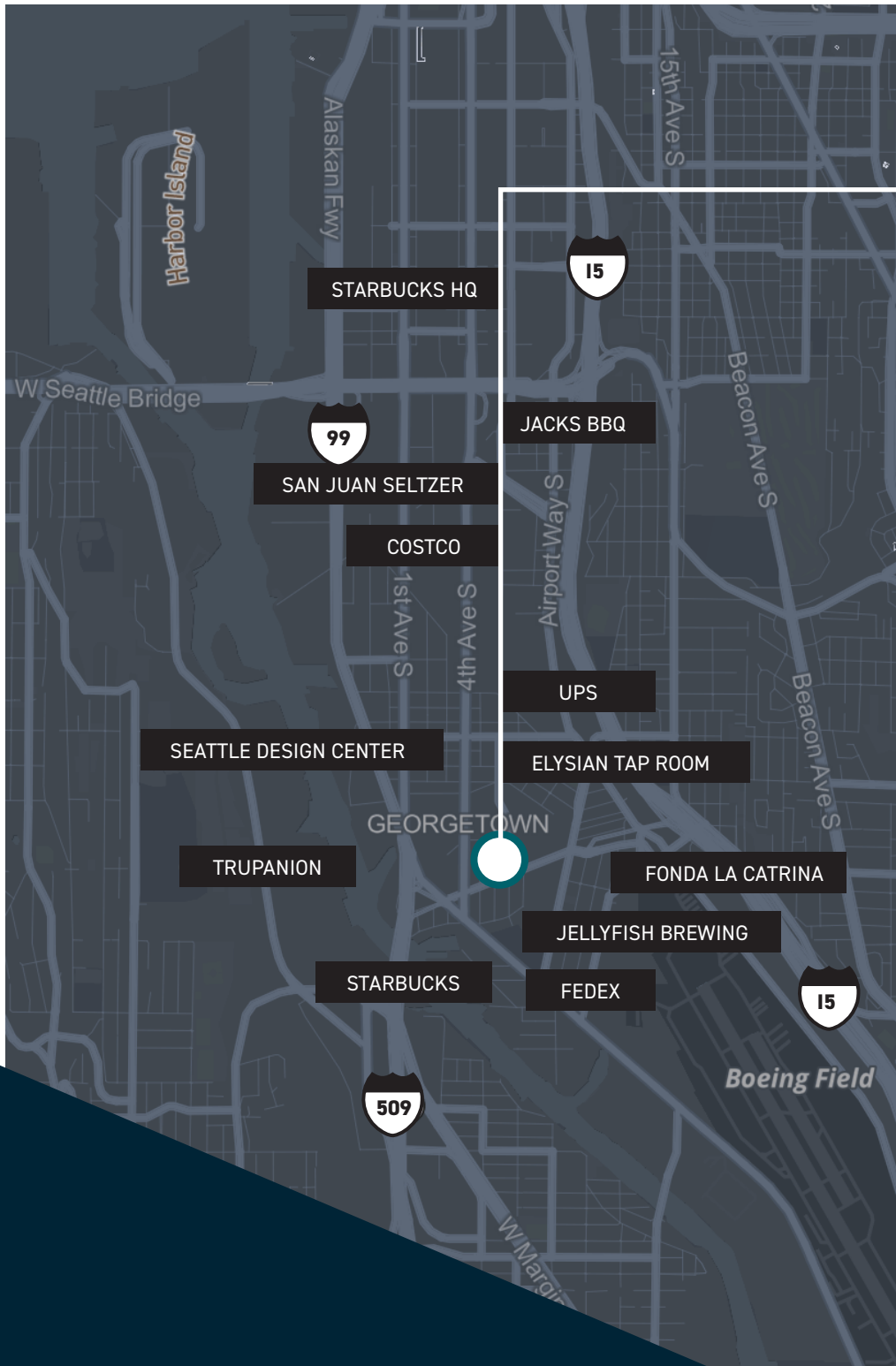


6133

6TH AVE S

DRIVE TIMES:

- Less than 2 minutes to Hwy SR509 and HWY99
- Less than 2 minutes to I5 North/South on ramp
- Less than 5 minutes to I90 East
- Less than 5 minutes to CBD Seattle.



6133

6TH AVE S

SEATTLE, WA 98108

CALL FOR RATES

ANDREW HITCHCOCK

Executive Vice President

206.442.2719

andrew.hitchcock@cbre.com

ZAC SNEDEKER

First Vice President

206.442.2709

zac.snedeker@cbre.com



© 2022 CBRE, Inc. All rights reserved. This information has been obtained from sources believed reliable, but has not been verified for accuracy or completeness. You should conduct a careful, independent investigation of the property and verify all information. Any reliance on this information is solely at your own risk. CBRE and the CBRE logo are service marks of CBRE, Inc. All other marks displayed on this document are the property of their respective owners, and the use of such logos does not imply any affiliation with or endorsement of CBRE. Photos herein are the property of their respective owners. Use of these images without the express written consent of the owner is prohibited. PMStudio_February2022

CBRE