

# FOR LEASE

PROFESSIONAL OFFICES

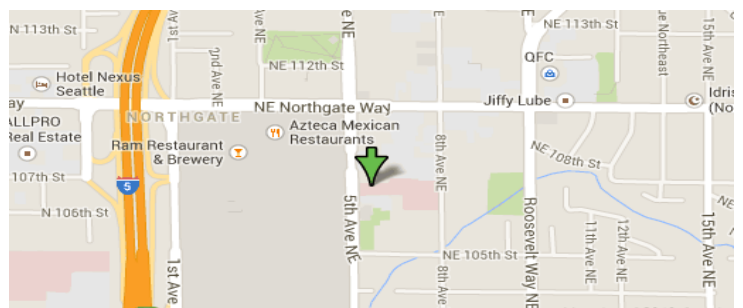
## 5<sup>th</sup> AVE PROFESSIONAL CENTER

10564 5th Avenue NE  
Seattle, WA 98125



### 5<sup>th</sup> AVE PROFESSIONAL FEATURES

- Professional Class A Office Space
- Suite # 201 = 2,098 SF
- \$20.00 SF + NNN
- Building & Monument Signage Available
- High Traffic Counts on 5<sup>th</sup> Avenue
- Abundant Free Parking
- Adjacent to the North Gate Mall
- Multiple On-Site Amenities
- Premier Mixed Use North Seattle location



**CCM Commercial**  
Commercial Real Estate Services

Cal C. Mitchell  
(425) 922-2886 Cell  
[Cal@ccmcommercial.com](mailto:Cal@ccmcommercial.com)

- (888) 417-1792 Office
- [www.ccmcommercial.com](http://www.ccmcommercial.com)



The information contained herein has been obtained from reliable sources but is not guaranteed. A prospective Buyer/ Tenant should verify each item relating to this property and all information contained herein.

# FOR LEASE

## PROFESSIONAL OFFICES

5<sup>th</sup> AVE PROFESSIONAL CENTER  
10564 5th Avenue NE  
Seattle, WA 98125



**CCM Commercial**  
Commercial Real Estate Services

Cal C. Mitchell  
(425) 922-2886 Cell

[Cal@ccmcommercial.com](mailto:Cal@ccmcommercial.com)

- (888) 417-1792 Office
- [www.ccmcommercial.com](http://www.ccmcommercial.com)



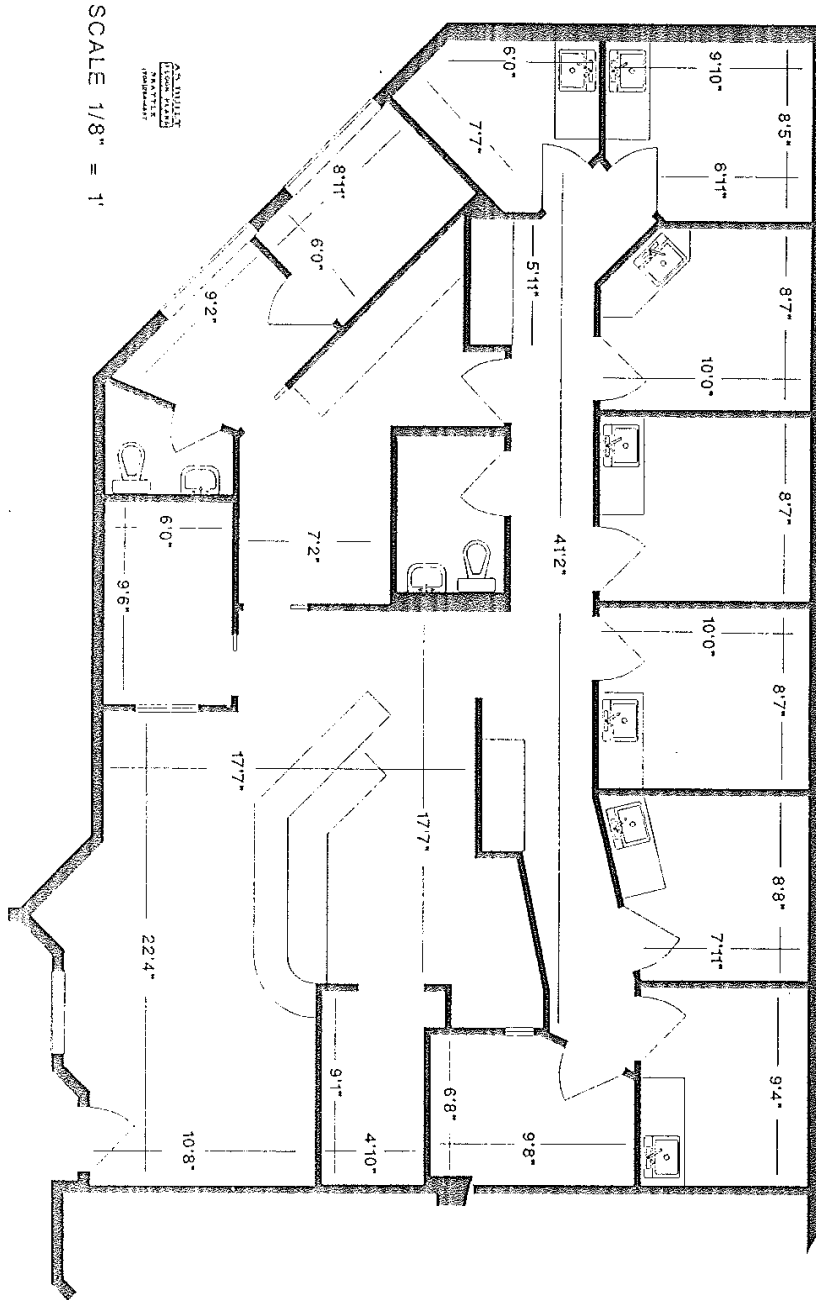
The information contained herein has been obtained from reliable sources but is not guaranteed. A prospective Buyer/ Tenant should verify each item relating to this property and all information contained herein.

# FOR LEASE

## PROFESSIONAL OFFICES

**5<sup>th</sup> AVE PROFESSIONAL CENTER**  
10564 5th Avenue NE  
Seattle, WA 98125

FIFTH AVENUE MEDICAL CLINIC  
10564 5th Avenue NE  
Seattle, WA 98125  
SUITE 201



**CCM Commercial**  
Commercial Real Estate Services

**Cal C. Mitchell**

(425) 922-2886 Cell

[Cal@ccmcommercial.com](mailto:Cal@ccmcommercial.com)

• (888) 417-1792 Office

• [www.ccmcommercial.com](http://www.ccmcommercial.com)

