

950 WINDY ROAD

APEX, NC 27502



JUDSON MCMILLAN

919.645.2764

JUDSONMCMILLAN@YORKPROPERTIES.COM

@YORKPROPERTIES1

2108 CLARK AVENUE, RALEIGH, NC 27605

YORKPROPERTIES.COM

york

FEATURES

- Suite 204: +/- 1,500 SF up to +/- 4,000 SF office space available for lease
- Well appointed professional office finishes
- Three story office building; built in 2016
- Great visibility, easy access and blocks from Hwy 64
- Adjacent to the Villages of Apex and minutes from downtown
- Under new ownership offering market incentives and professional management
- Lease rate - \$19.00 PSF NNN + TICAM



APEX ACCOLADES

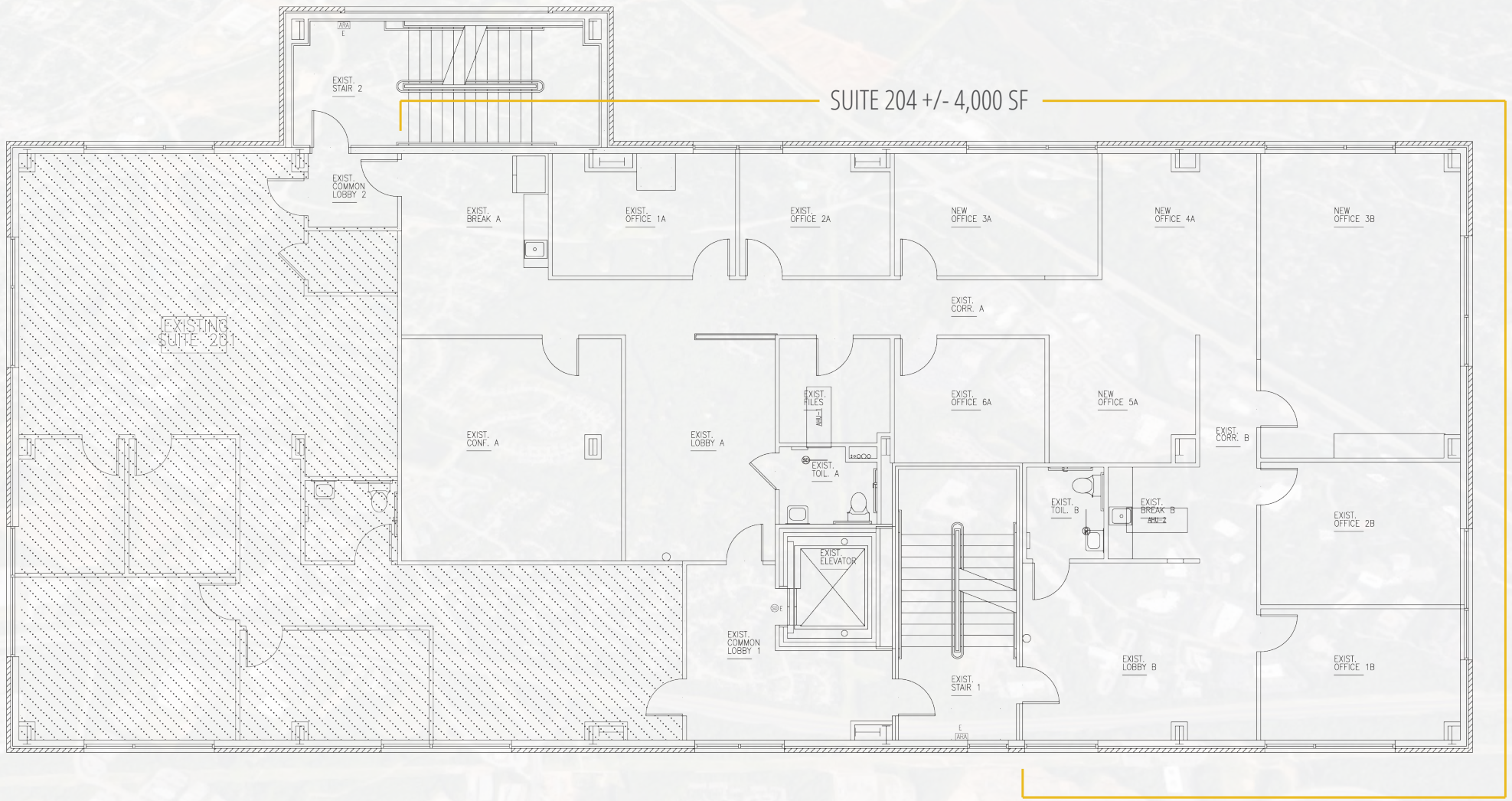


ABOUT THE AREA

“Apex, North Carolina is located in Wake County which is situated within the Research Triangle area. Apex is less than 30 minutes from three Tier 1 Research Universities: University of North Carolina at Chapel Hill, North Carolina State University and Duke University. It is 15 miles from RDU International Airport which is home to nine commercial air carriers and their regional partners. Combined, they fly customers to more than 40 destinations on 400 flights daily. Lastly, Apex is located less than 20 minutes from the prestigious Research Triangle Park placing innovation and creativity at the fingertips of any business that chooses to locate in Apex.”

- apexnc.org

FLOORPLAN





GOLDERS GREEN

HADDON PLACE

SALEM WOODS

950 WINDY ROAD

BOJANGLES

TACO BELL

SOUTHERN PEAK
BREWERY

THE VILLAGES
OF APEX

US-64

COSTCO WHOLESALE

APPLECROSS
TOWNHOMES

- SCHLOTZSKY'S
- MCDONALDS
- LA COCINA MEXICAN
- BREWSTER'S PUB

SW CARY PKWY

ROYAL RIDGE

VILLAGES OF
APEX SOUTH

APEX HIGH SCHOOL

WENDY'S

MACGREGOR
TOWNS

- MACGREGOR VILLAGE**
- TONY'S BOURBON ST OYSTER BAR
 - MACGREGOR DRAFT HOUSE
 - WASABI SUSHI & THAI RESTAURANT
 - ASALI DESSERTS & CAFE
 - CILANTRO INDIAN CAFE
 - APEX FINE WINE

- DOWNTOWN APEX**
- MR. A'S BEIGNETS
 - COMMON GROUNDS COFFEEHOUSE & DESSERTS
 - THE PROVINCIAL
 - LA RANCHERITA MEXICAN
 - ANNA'S PIZZA
 - BUTTERCREAM'S BAKESHOP
 - SALEM STREET PUB
 - APEX FARMERS MARKET

VINTAGE GROVE

- AUTO PARK**
- JEEP
 - AUDI
 - NISSAN
 - HONDA
 - CHEVROLET
 - SUBARU
 - MASERATI
 - MERCEDES-BENZ
 - ACURA
 - PORCHE
 - JAGUAR-LANDROVER
 - BUICK-GMC

THE GROVES
TOWNHOMES

SEAGROVES
FARM

US-64

ABBEY ROAD TAVERN

WATERFORD
GREEN

WATERFORD
EAST

US-1

US-1

DAIRY QUEEN

KOKA BOOTH
AMPHITHEATRE

WYNDELL

RENAISSANCE AT
REGENCY COTTAGES