

## Meridian Court @ The Fair

909 South Meridian  
Puyallup, WA

Drive-thru pad available -  
land lease or for sale

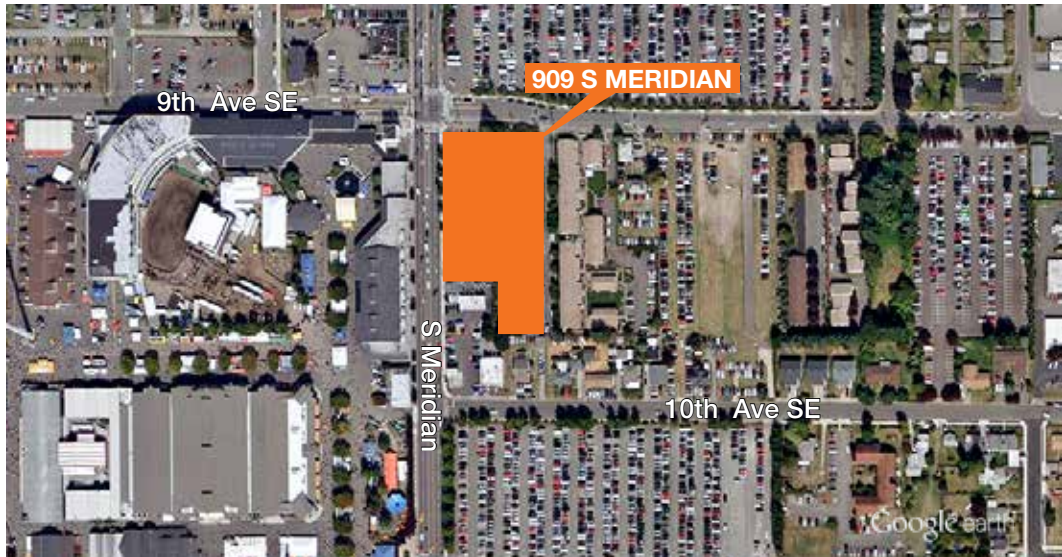
30,000 VPD on Meridian/SR 161

Fully signalized intersection  
directly across from Washington  
State Fair Main entrance

Over one million visitors each year  
to the Washington State Fair and  
events throughout the year

Within 1/2 mile of fast expanding  
Good Samaritan/Multicare  
Hospital - great for restaurants,  
hotels and general retail

Easy freeway access

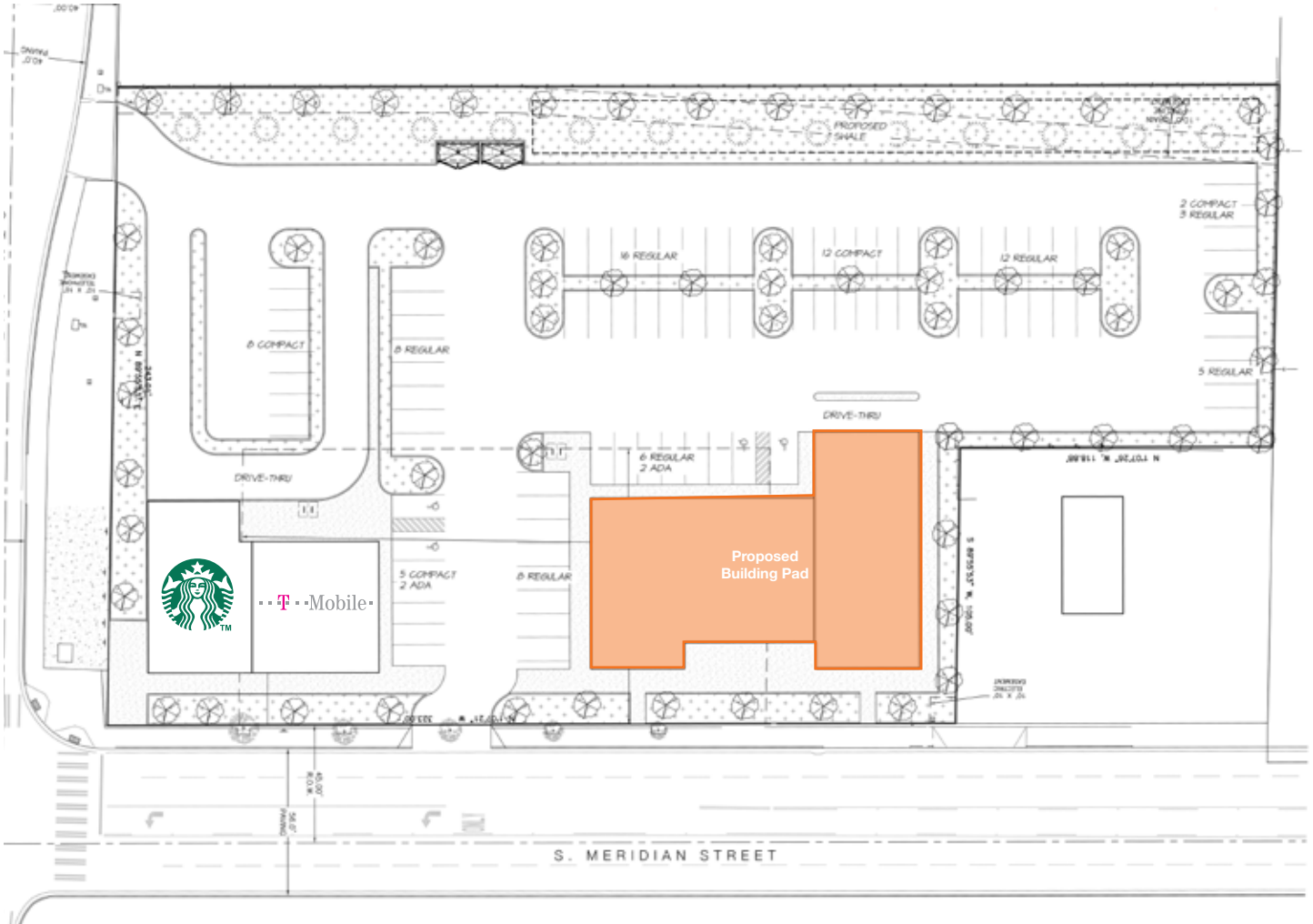


### Contact

**Rachel Corp**  
253.722.1417  
rcorp@kiddermathews.com

**Vanessa Herzog, SIOR, CCIM**  
253.722.1453  
vherzog@kiddermathews.com

## Meridian Court @ The Fair



**NOT TO SCALE**

### Contact

**Rachel Corp**  
253.722.1417  
rcorp@kiddermathews.com

**Vanessa Herzog, SIOR, CCIM**  
253.722.1453  
vherzog@kiddermathews.com