

“PARK TERRACE” OFFICE SUITES **FOR LEASE**



**275 South Main Street
Doylestown Borough, Bucks County, PA**

COMMERCIAL • INDUSTRIAL • INVESTMENT

Central Location With Sign Exposure



PROPERTY SPECIFICATIONS

Suite 11

Suite Size: 1,700± SF

Availability: Immediately

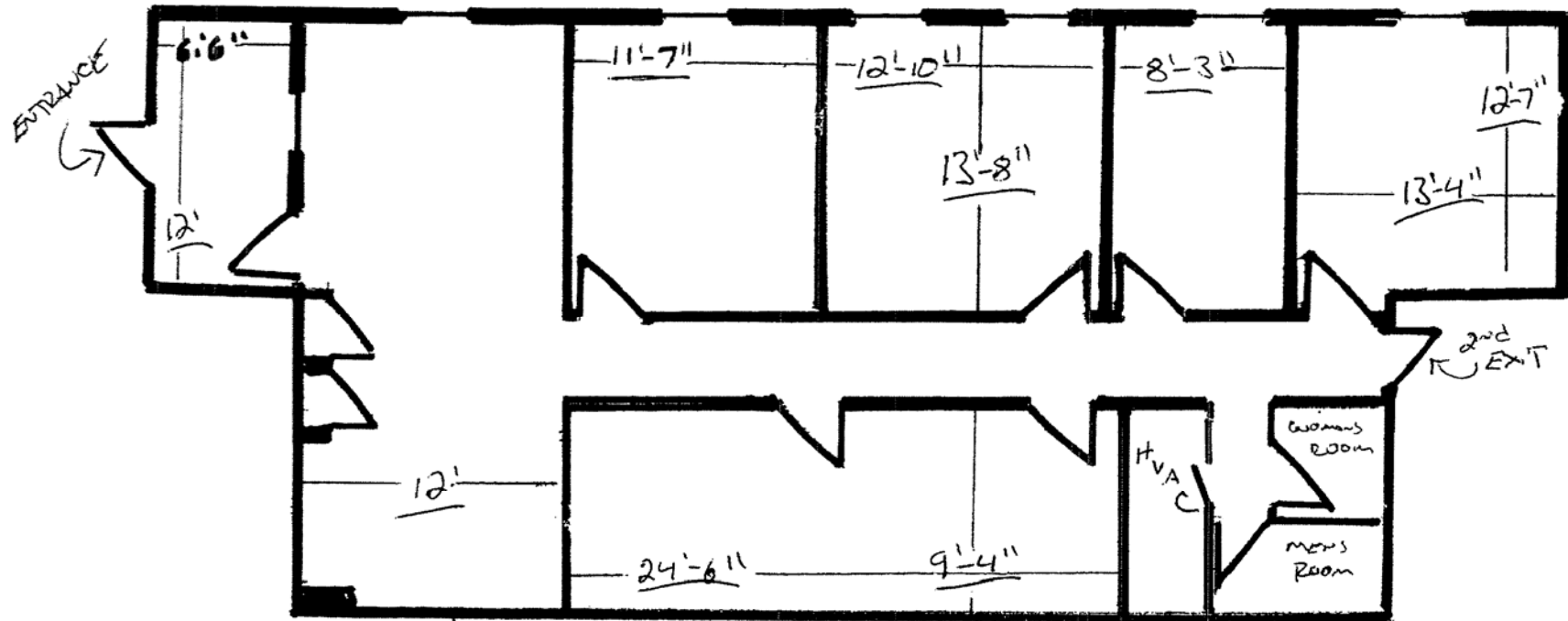
Lease Rate: ... \$17 PSF (\$2,408.33 per month)
plus utilities, trash, sewer,
and \$55/month for HVAC



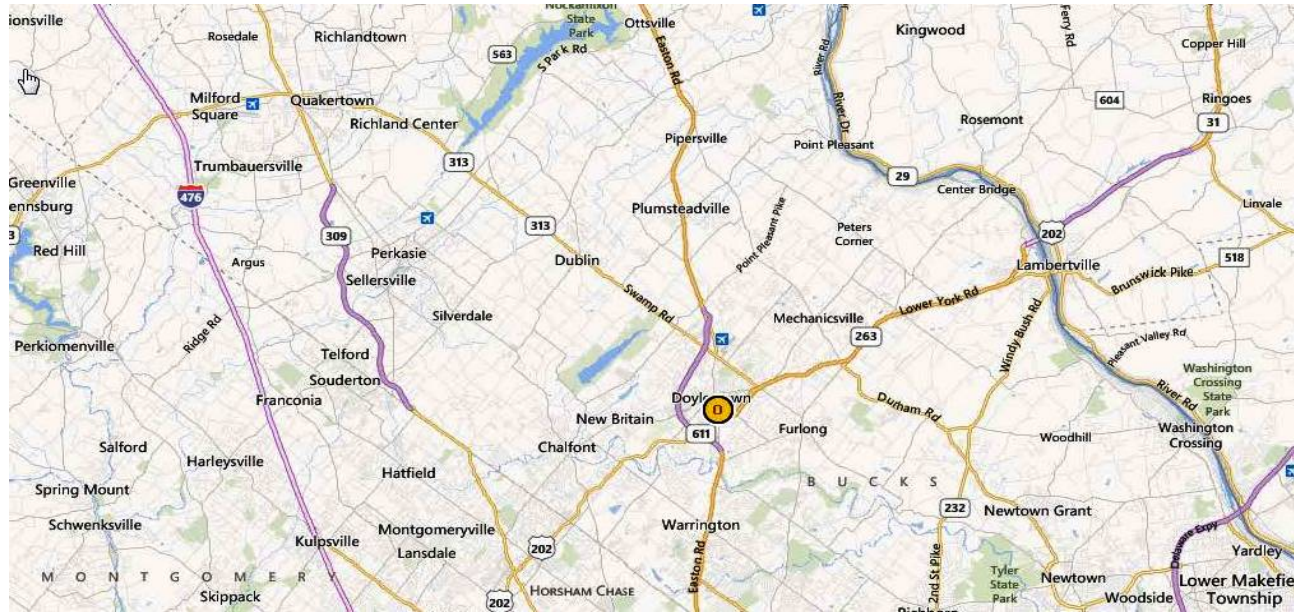
PRESENTED BY:

Kurt Eisenschmid, CCIM - Penn's Grant Realty Corporation

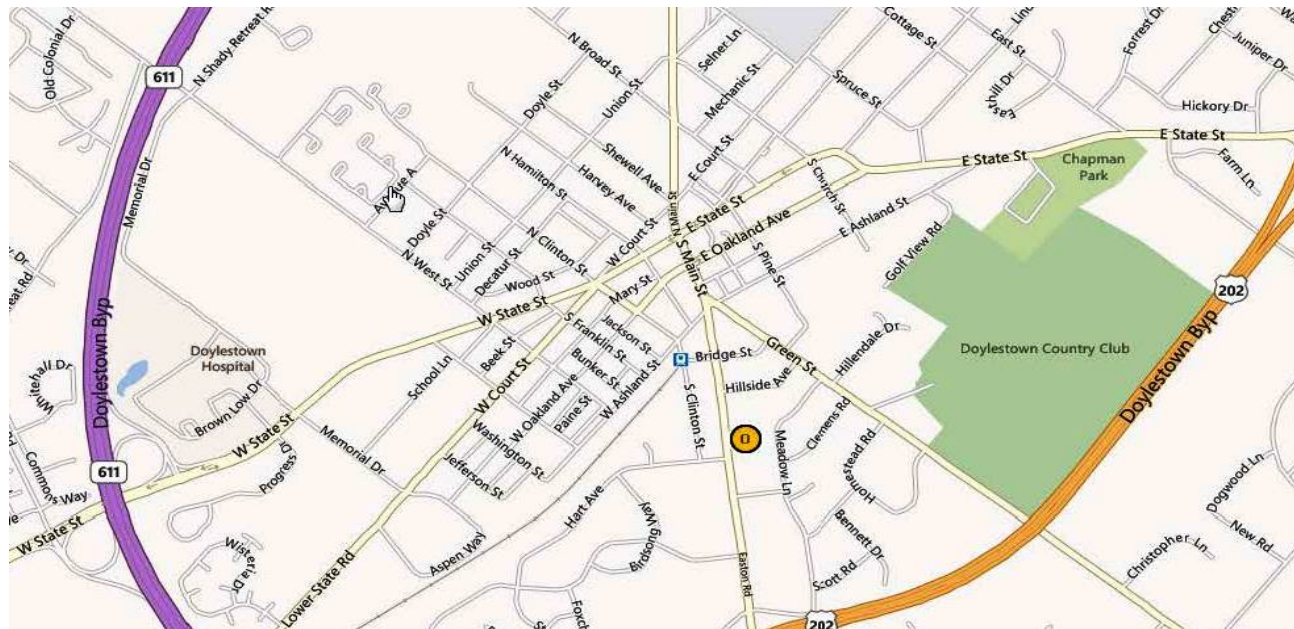
2005 S Easton Rd, STE 306, Doylestown, PA • 215-489-3800 x3 • kurt@pcrealty.com • www.pcrealty.com



Suite 11 - 1,700± SF



REGIONAL MAP



STREET MAP