

# DRIVE TOWER

LEHI | UTAH

ICONIC  
MODERN  
CLASS A  
OFFICE  
SPACE FOR  
LEASE

3333 NORTH  
DIGITAL DRIVE



Jones Lang LaSalle Americas, Inc.





# space details

---

available space

**5,382 RSF // Suite 200**

**3,470 RSF // Suite 230**

lease rate

**\$28.00 FSG**

building size

**70,416 SF**

parking ratio

**4/1,000**

year built

**2016**

available date

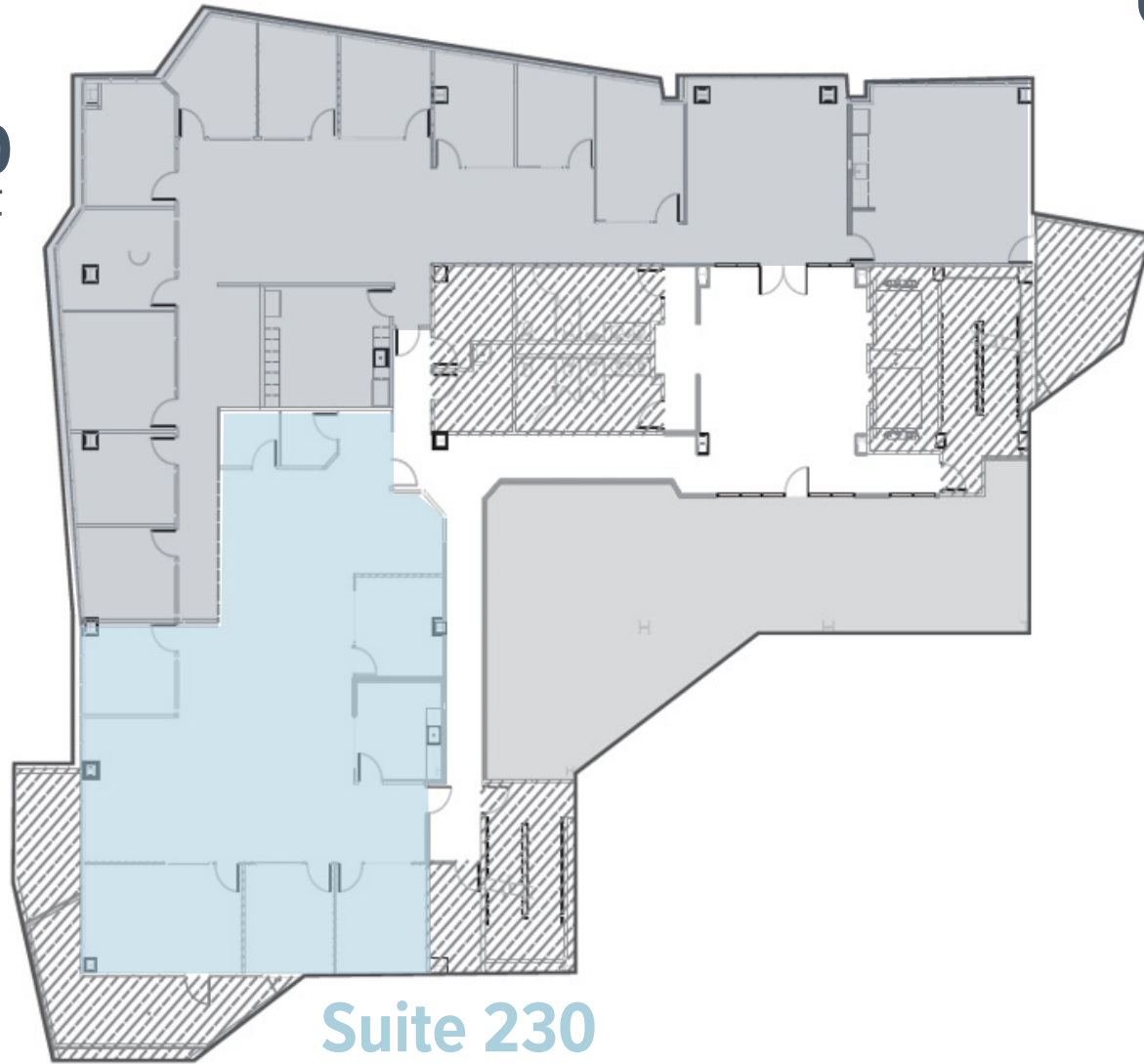
**NOW**



# floor plans



**Suite 200**  
5,382 RSF



**Suite 230**  
3,470 RSF

# a destination for work and play

---



**STATE OF THE ART**  
seven story modern  
glass tower



**AMAZING**  
mountain and  
valley views



**AMPLE**  
underground  
parking



**ON SITE**  
fitness  
center



**UNMATCHED**  
visibility and  
access to I-15



**DESIREABLE**  
eastside  
location



**WALKABLE**  
to an abundance of amenities,  
restaurants and shops



**MODERN**  
and highly prominent  
North Lehi location







**DRIVE  
TOWER**  
LEHI | UTAH





- RESTAURANTS
- SHOPPING
- HOTELS + SERVICES



**DRIVE  
TOWER**  
LEHI | UTAH



**David Nixon**  
+ 1 801 456 9518  
david.nixon@am.jll.com

**Jim Balderson**  
+ 1 801 456 9519  
jim.balderson@am.jll.com

**Jillian Johnson**  
+ 1 801 456 9517  
jillian.johnson@am.jll.com