

# FIXTURED RESTAURANT

285 Nevins Street - Gowanus, BK

LEVITAN

**NEW LEASE  
w/ Landlord**



# 285 NEVINS ST

SE Corner of Sackett St - Gowanus, BK



**SPACE:** Ground: 1,400 sf  
Basement: 750 sf

**POSSESSION:** Immediate

**CEILINGS:** 12'

**FRONTAGE:** 80' wraparound

**CONDITION:** Fully fixtured restaurant including vented kitchen and walk-in box storage. Build out is only 3 years old.

**NEIGHBORS:** Dinosaur BBQ, Royal Palms, Ample Hills, Pig Beach, Lavendar Lake, Threes Brewing, Insa, Abbottsford Coffee

**RENT:** New direct long term lease at \$6,100 per month. Inquire about key money.

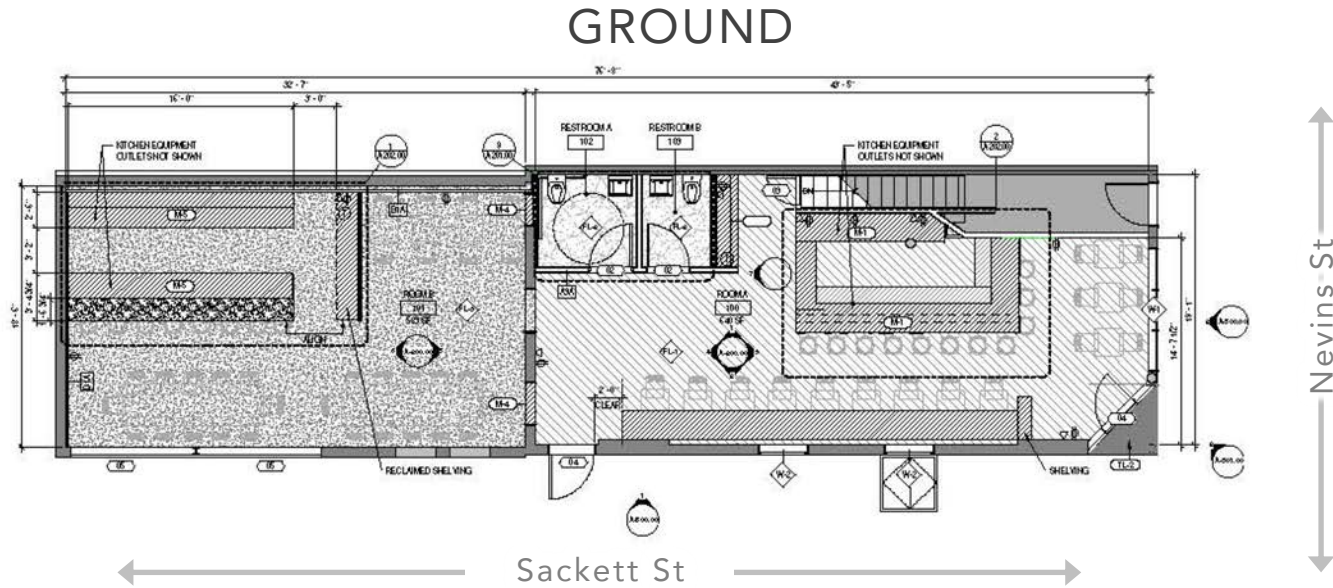
# 285 NEVINS ST

SE Corner of Sackett St - Gowanus, BK

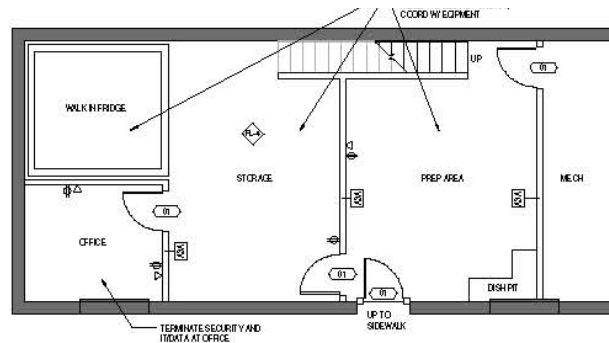


# 285 NEVINS ST

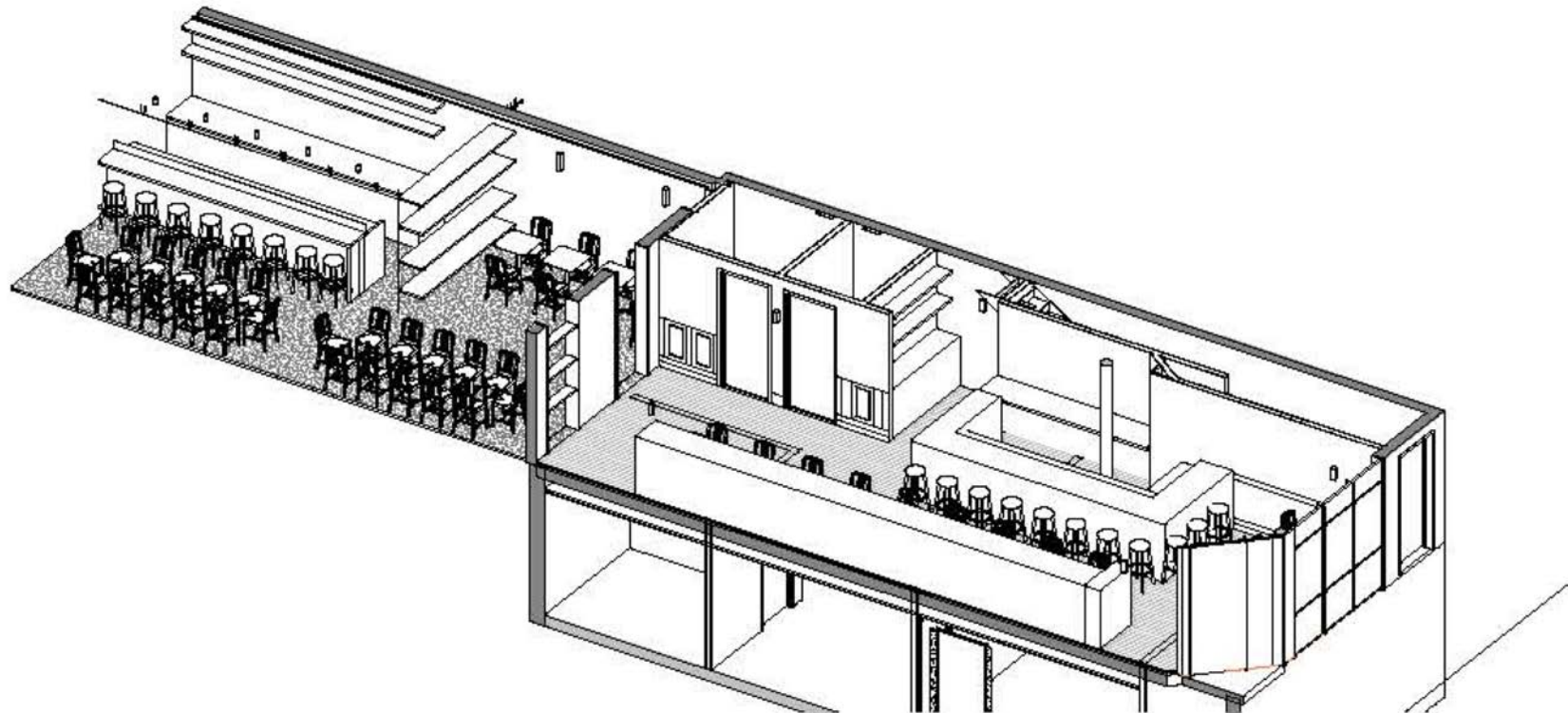
SE Corner of Sackett St - Gowanus, BK



### BASEMENT



SCHEMATIC OF EXISTING LAYOUT



# 285 NEVINS ST

SE Corner of Sackett St - Gowanus, BK

Restaurant/Bars

Dry Retail

Super Market

Fitness

Office Tenants



LEVITAN

Jeffrey Kessler

Cell: 914.391.7689

Email: [jeff@levitanrealestate.com](mailto:jeff@levitanrealestate.com)

LEVITAN

[www.levitanrealestate.com](http://www.levitanrealestate.com)