

OFFICE SPACE AVAILABLE

1,935 - 7,295 SF

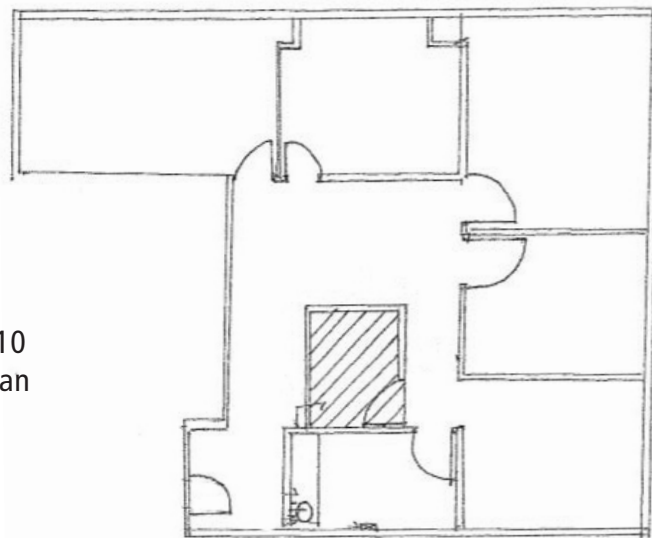
10350

10350
SANTA MONICA BLVD

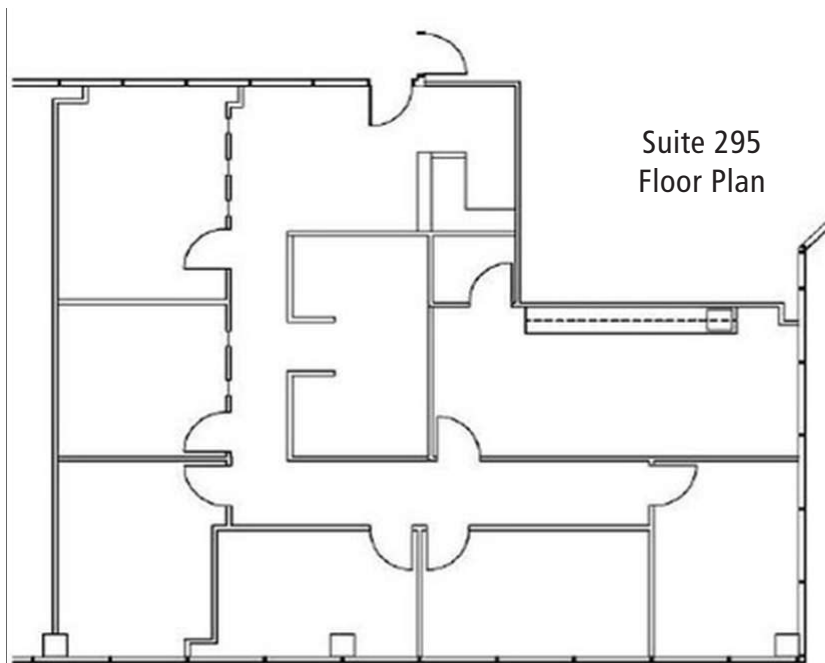


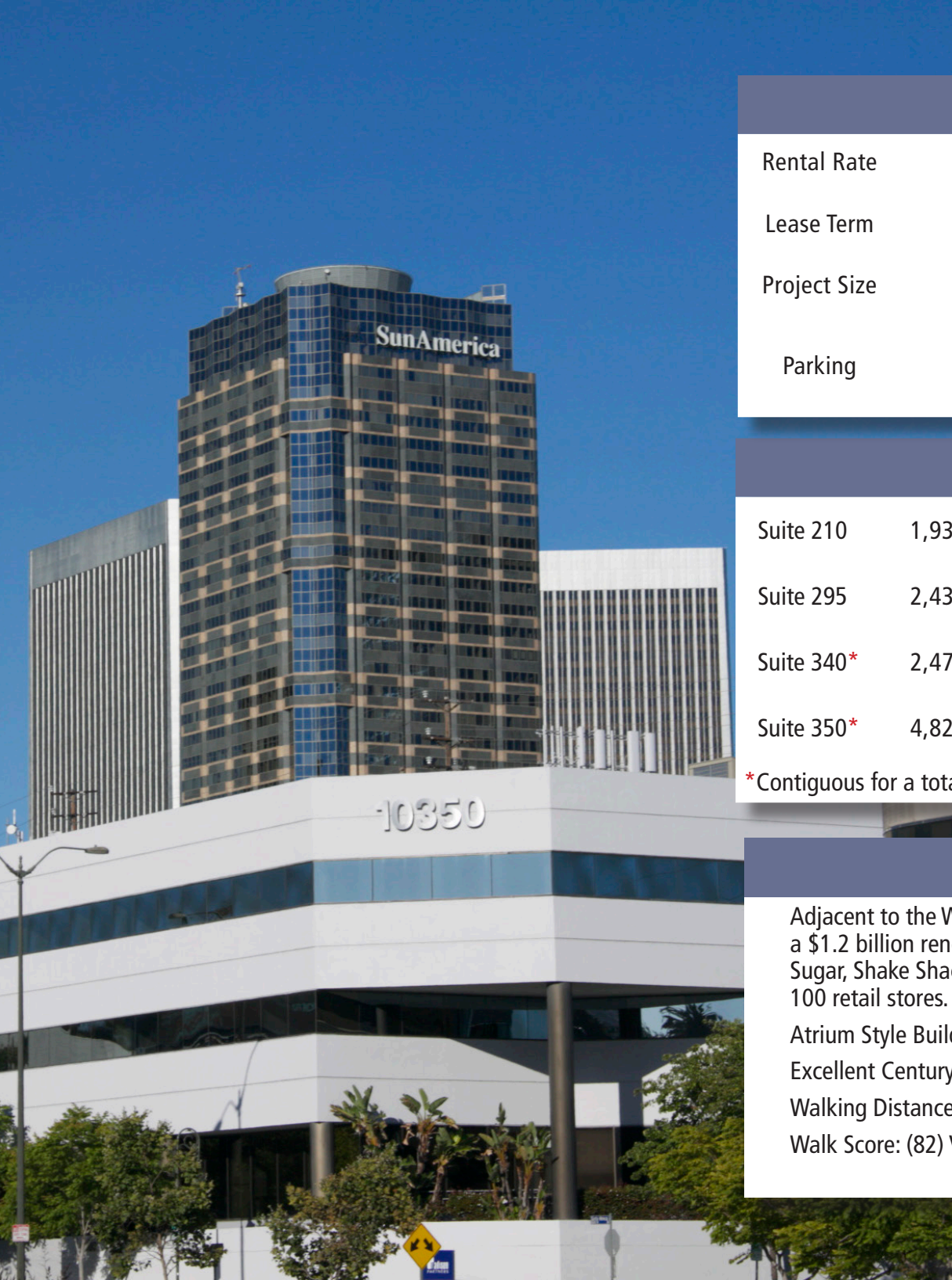


Suite 210
Floor Plan



Suite 295
Floor Plan





PROJECT OVERVIEW

| | |
|--------------|---|
| Rental Rate | \$4.00/SF FSG |
| Lease Term | 1-10 Years |
| Project Size | 43,781 SF |
| Parking | 2.4/1,000 \$225 Per Reserved Space \$140 Per Unreserved Space |

CURRENT AVAILABILITY

| | | |
|------------|----------|---|
| Suite 210 | 1,935 SF | 4 window offices, conference room and kitchen with small bullpen area. |
| Suite 295 | 2,430 SF | 4 window offices, conference room, kitchen and prime corner view . |
| Suite 340* | 2,473 SF | Prime corner suite with great views. Primarily open space with 1 office, conference room and kitchenette. |
| Suite 350* | 4,822 SF | 10 window offices, conference room and kitchen. |

*Contiguous for a total of 7,295 SF

PROJECT FEATURES

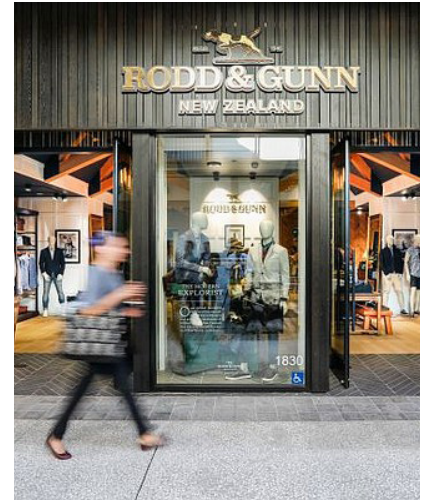
Adjacent to the Westfield Century City shopping center which recently completed a \$1.2 billion renovation. The shopping center includes Eataly, Mezza Garden, Rock Sugar, Shake Shack, Wexler's Deli, Toscanova, Petros, AMC 15 Theaters, and over 100 retail stores.

Atrium Style Building

Excellent Century City Adjacent Building

Walking Distance to Coffee Bean and Tea Leaf

Walk Score: (82) Very Walkable

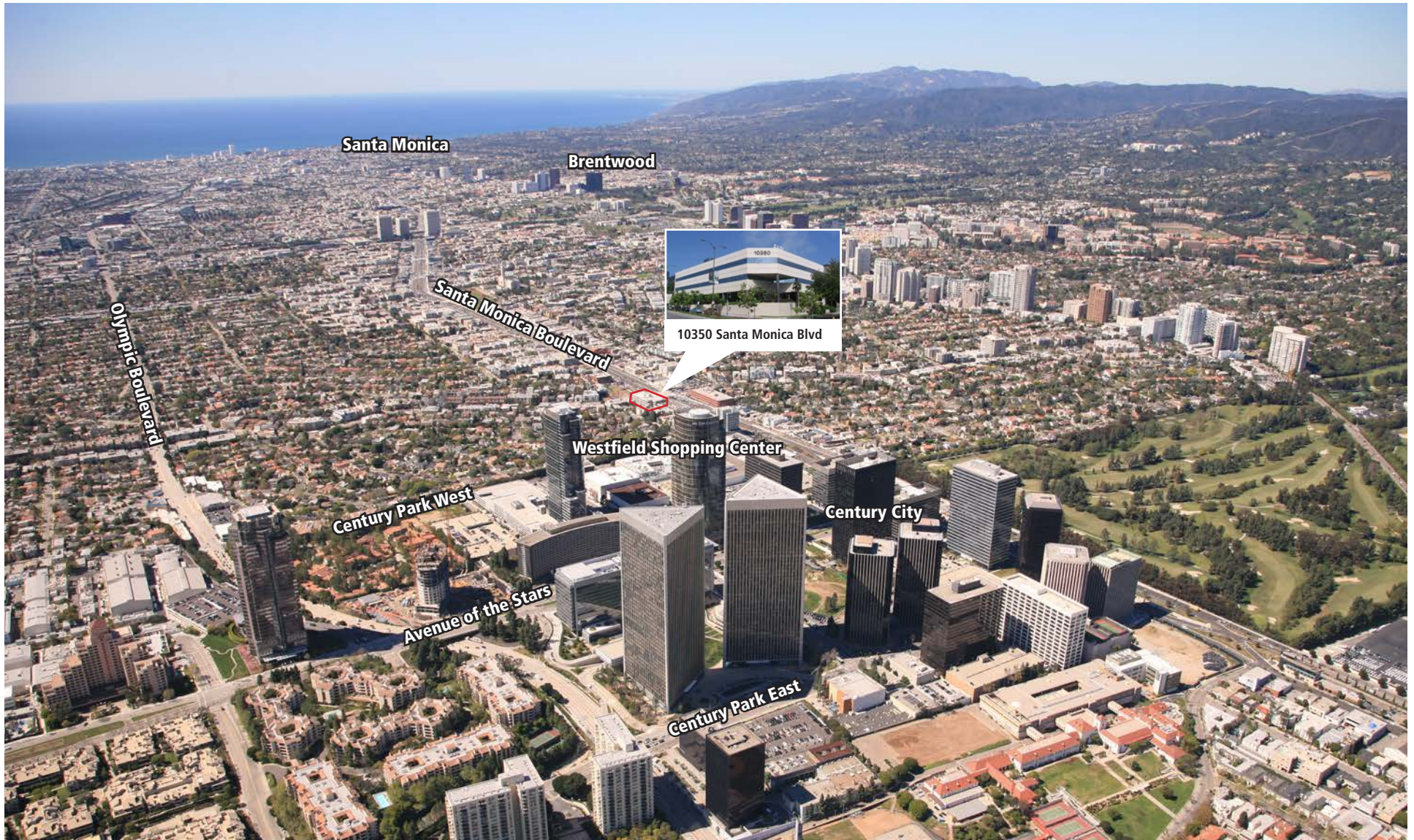


Westfield

| | | | |
|----------------|----------------|----------------|---------------------|
| 2XU | Everything But | Macy's | Shake Shack |
| Ajisen Ramen | Water | Madewell | Sugarfina |
| Allen Edmonds | Free People | Maje | Suitsupply |
| All Saints | Fresh | Massis Kabob | Swarovski |
| Aloha Poke | Gearys Rolex | Nordstrom | Ted Baker |
| AMC Theaters | Botique | Oak+Fort | Tesla Motors |
| Apple Store | Gelson's | Obica | The Body Shop |
| Aritzia | H&M | Origins | The Coffee Bean |
| Aveda | Javier's | Petros | The Container Store |
| Bacio di Latte | J Crew | Randy's Donuts | Tiffany & Co. |
| Bloomingdale's | Kafe Bougasta | RockSugar | Toscanova |
| Cole Haan | Kendra Scott | Fodd & Gunn | Travis Mathew |
| Cotton On | La Colombe | Saje | Tumi |
| Eataly | L'Occitane en | Sandro | Typo |
| Equinox | Provence | Sephora | |

and much more...





JOE KING

310.442.3375

jkking@madisonpartners.net

License ID No.: 01195833

12121 WILSHIRE BOULEVARD | LOS ANGELES | 310.820.3410 | WWW.MADISONPARTNERS.NET

Copyright 2019 Madison Partners DRE License No. 00978067. The information above has been obtained from sources believed reliable. While we do not doubt its accuracy, we have not verified it and make no guarantee, warranty or representation about it. It is your responsibility to independently confirm its accuracy and completeness. Any projections, opinions, assumptions or estimates used are for example only and do not represent the current or future performance of the property. The value of this transaction to you depends on tax and other factors which should be evaluated by your tax, financial and legal advisors. You and your advisors should conduct a careful, independent investigation of the property to determine to your satisfaction the suitability of the property for your needs. Updated 05.07.20

