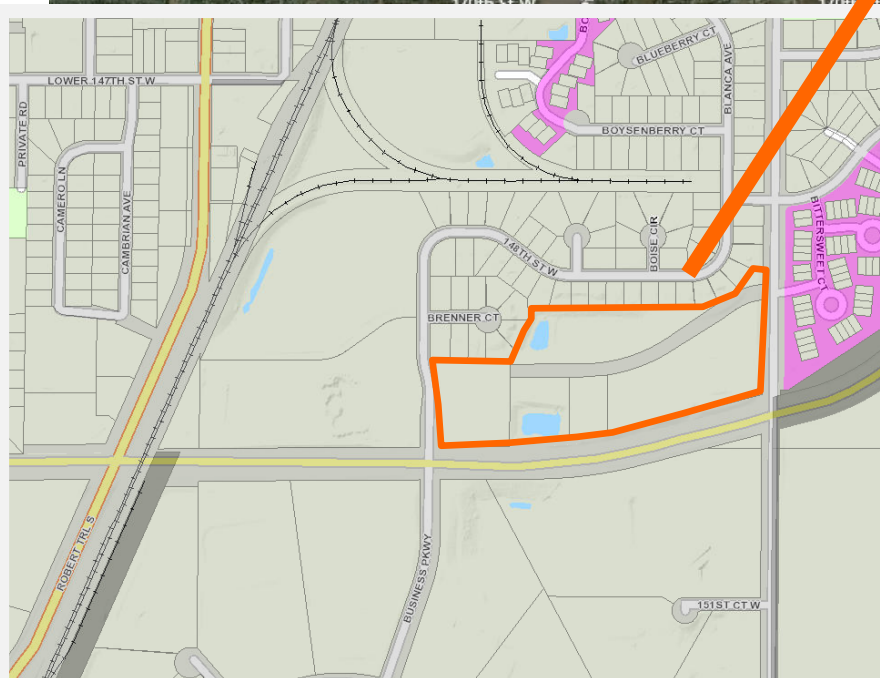
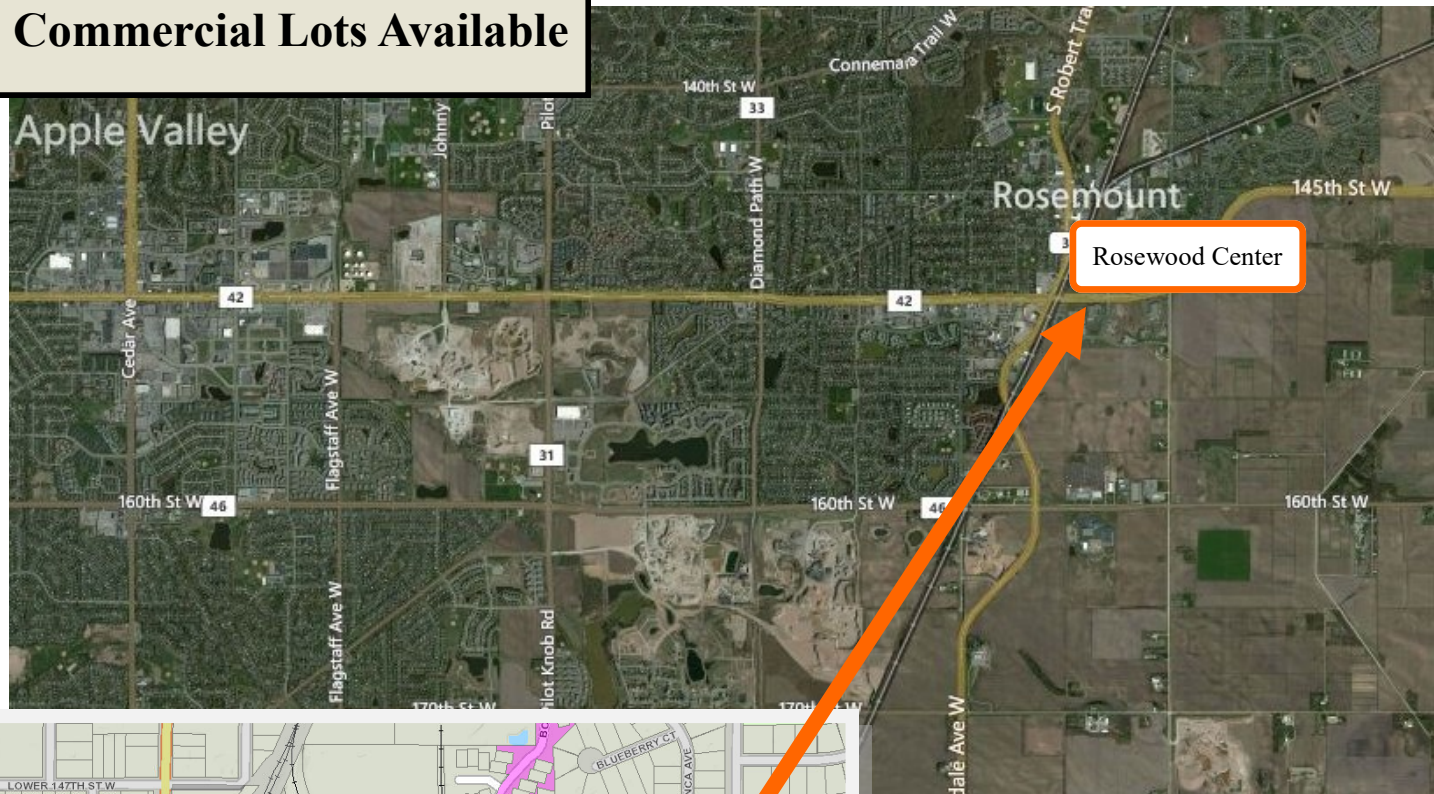


# Rosewood Center, NEC Hwy 3 & CR-42, Rosemount, MN

## Commercial Lots Available



- Total of 8.5 Acres available
- Ideal location for:
- Hotel Site
- C-Store
- Retail (see GAP report)
- Restaurant
- Zoned C3

**For more information, contact:**  
**Bruce Rydeen**  
 952.469.9444  
 brucer@cerron.com

# Rosewood Center, NEC Hwy 3 & CR-42, Rosemount, MN

Lot	Block	\$/SF	Area SF	Lot Price
1	2	\$12.00	82,535	\$990,420
2	2	\$10.00	47,340	\$473,400
3	2	SOLD	47,875	SOLD
4	2	\$10.00	41,668	\$416,680
5	2	\$10.00	54,387	\$543,870
6	2	\$10.00	66,275	\$662,750
7	2	\$12.00	78,277	\$939,324

Updated 11/22/2019

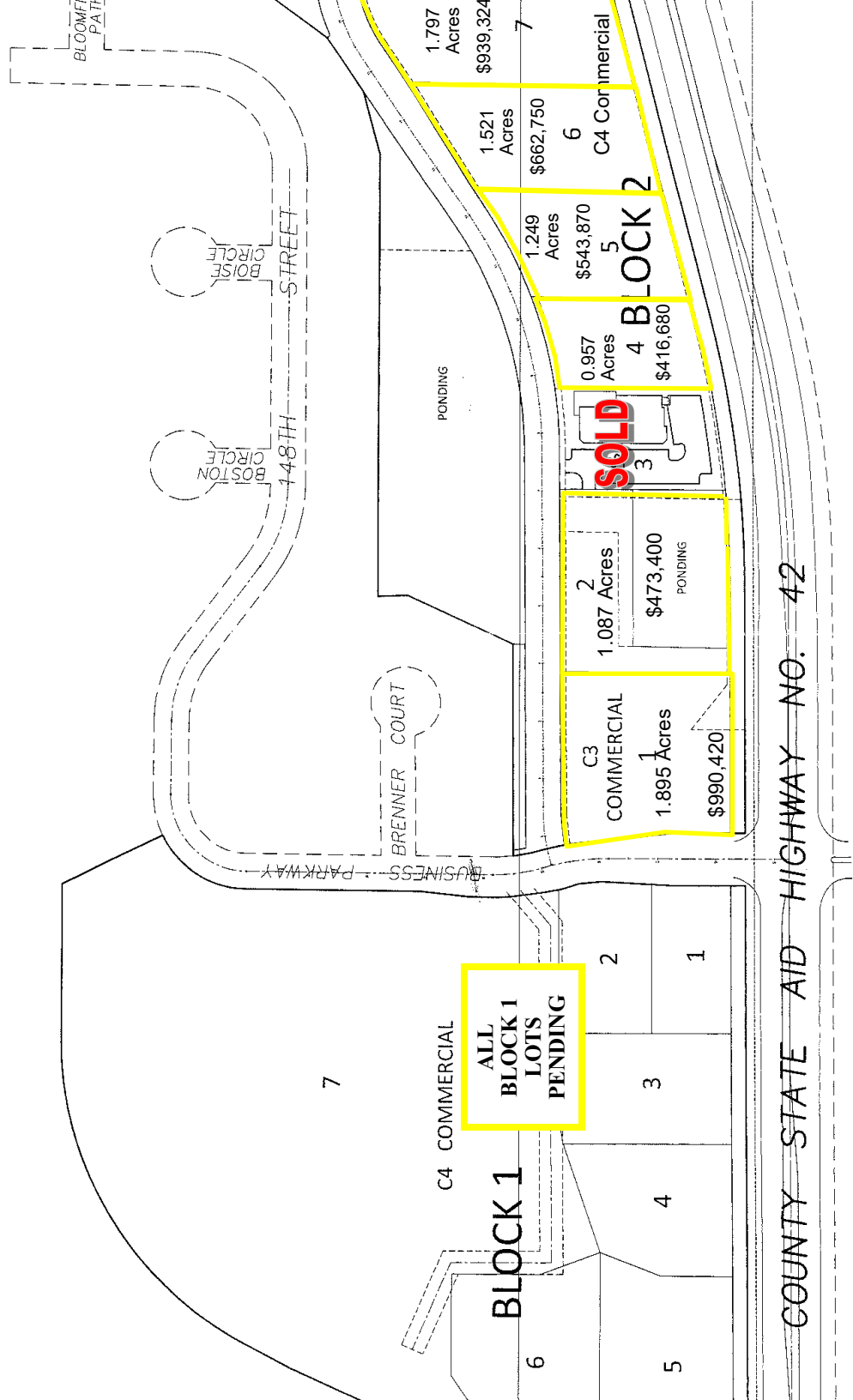


## Area Retail / Commerce Include:

Aldi, Cousins Subs, Vermillion State Bank, Rudy's Red Eye Grill, Eddie Cheng Restaurant, Merchants Bank, Taco Johns, Cub Foods, KinderCare, China Wok, Rosemount Liquor, Shenanigans, Rosemount Theater, Perfect Medical Solutions.

# Site Map

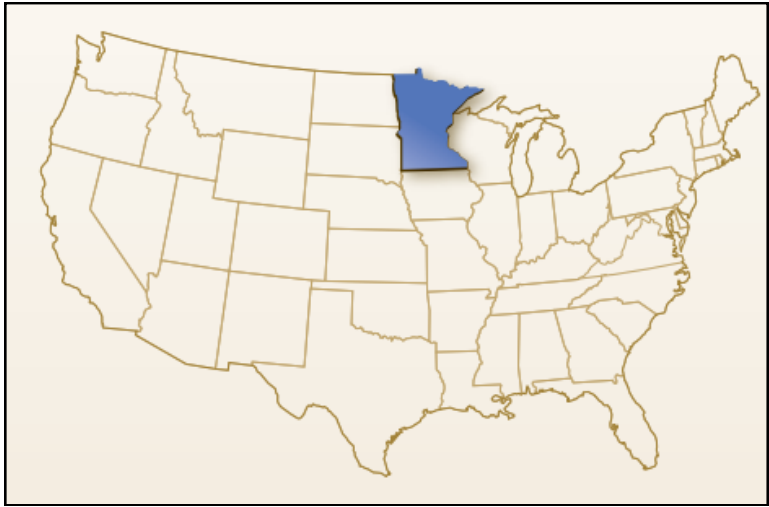
Rosewood Center, NEC Hwy 3 & CR-42, Rosemount, MN



**Creating Property Solutions For You... With You**

Information contained herein is deemed reliable but is not guaranteed. We have not verified its accuracy nor do we make any warranty or representation about it. Your tax and legal advisors should conduct your own investigation of the property and transaction.

# Rosewood Center, NEC Hwy 3 & CR-42, Rosemount, MN



## Demographics

(Source : US Census Bureau, 2014 projected , ESRI)

	1 mile	3 mile	5 mile
<b>Population</b>	5,414	33,508	96,914
<b>Average HH Income</b>	\$80,640	\$103,762	\$106,737
<b>Median HH Income</b>	\$73,187	\$86,945	\$87,803



## Quick Links:



**Rosemount City Information:**

<http://www.ci.rosemount.mn.us/index.aspx?NID=121>



**State of MN Information:**

<http://www.approdevelopment.com/wp-content/uploads/2014/12/Positively-Minnesota-2014.pdf>