

# THE MEDICAL CENTER AT CRAIG RANCH

8080 State Highway 121, McKinney, TX 75070



## MEDICAL OFFICE SPACE | FOR LEASE

- Three story - 50,947 SF
- Constructed in 2005
- Located along Highway 121 in the heart of Craig Ranch
- Adjacent to TPC Craig Ranch Golf Course
- Anchored by Healthcare Associates of Texas
- First floor surgery center
- Strong ownership & local management
- Building signage opportunity
- Monument signage available
- Abundant surface parking with covered available
- Covered Patio drop area

### Chris Lipscomb

214.237.5022

chris.lipscomb@transwestern.com

### Laney Underwood

214.237.5020

laney.underwood@transwestern.com

### Dallas Office

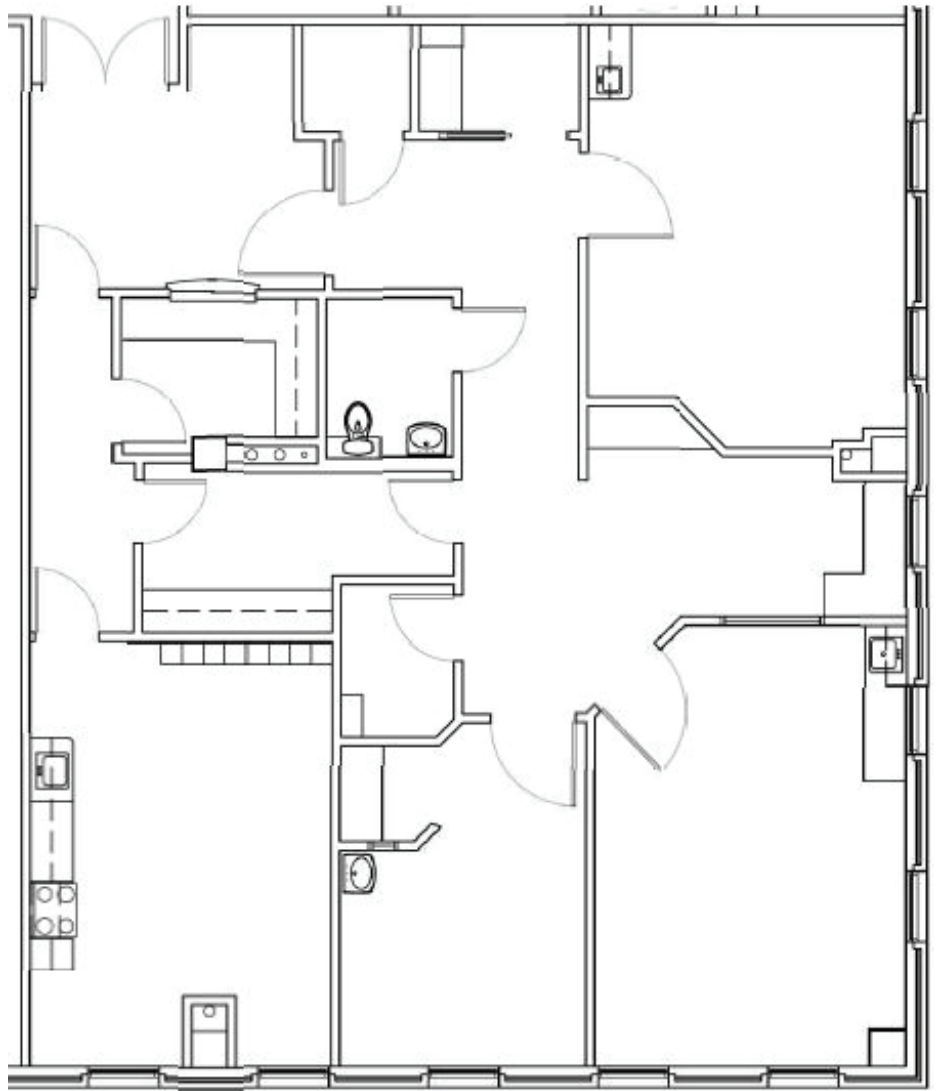
2300 N. Field Street, Ste. 2000  
Dallas, Texas 75201

Transwestern.com



## SUITE 210B

2,337 RSF



### FLOORPLAN DETAILS

- Suite 210B – 2,337 RSF
- Located on the 2nd floor of the building
- Corner suite with multiple window exam rooms
- A tremendous amount of natural light
- Second generation space
- Interior private restroom
- Reception & waiting area

#### Dallas Office

2300 N. Field Street, Ste. 2000  
Dallas, Texas 75201

[Transwestern.com](http://Transwestern.com)



#### Chris Lipscomb

214.237.5022  
[chris.lipscomb@transwestern.com](mailto:chris.lipscomb@transwestern.com)

#### Laney Underwood

214.237.5020  
[laney.underwood@transwestern.com](mailto:laney.underwood@transwestern.com)